

GLAD VEREND DRUKSTUK IN KUNSTSTOF MET KOGEL IN KUNSTSTOF OF RVS

Pressore a molla liscio con sfera

Materiaal:

Lichaam van drukstuk in vormgeperste kunststof (POM - Delrin).

Kleur:

Wiel:

Zwart.

Kogel:

W846: Wit.

W846CIN: Natuurlijk.

Kogel:

W846:

Kogel in witte vormgeperste kunststof (POM).

W846CIN:

Kogel in gehard RVS (AISI 420).

Types veerkracht:

Normaal.

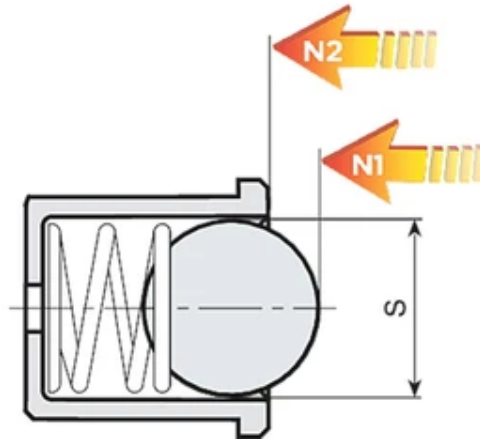
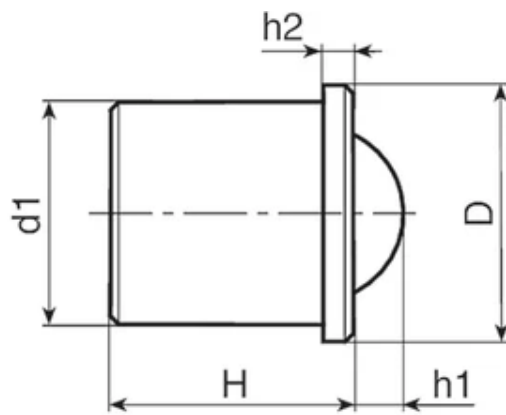
Veer:

Veer in RVS (AISI 301).

Speciale verzoeken:

Geen.





Versie W846: met kogel in kunststof (Delrin)

| Code | art. | s | H | h1 | h2 | D | N1 (N) | N2 (N) | d1 (+0.1 +0) | Gewicht (g) |
|-----------|------------|-----|------|-----|-----|-----|--------|--------|--------------|-------------|
| W846.0001 | W846.TND04 | 3 | 5 | 0.7 | 1 | 4.6 | 3 | 7 | 4 | 0.2 |
| W846.0002 | W846.TND05 | 4 | 6 | 1 | 1 | 5.6 | 4 | 7 | 5 | 0.35 |
| W846.0003 | W846.TND06 | 5 | 7 | 1.5 | 1 | 6.5 | 6 | 12 | 6 | 0.7 |
| W846.0004 | W846.TND08 | 6.5 | 9 | 1.8 | 1 | 8.5 | 6 | 12 | 8 | 1.5 |
| W846.0005 | W846.TND10 | 8 | 13.5 | 2.7 | 2.5 | 12 | 10 | 20 | 10 | 2 |
| W846.0006 | W846.TND12 | 10 | 16 | 3.5 | 2.5 | 14 | 15 | 25 | 12 | 2.3 |

Versie W846CIN: met kogel in RVS

| Code | art. | s | H | h1 | h2 | D | N1 (N) | N2 (N) | d1 (+0.1 +0) | Gewicht (g) |
|-----------|---------------|-----|------|-----|-----|-----|--------|--------|--------------|-------------|
| W846.0007 | W846.TND04CIN | 3 | 5 | 0.7 | 1 | 4.6 | 3 | 7 | 4 | 0.2 |
| W846.0008 | W846.TND05CIN | 4 | 6 | 1 | 1 | 5.6 | 4 | 7 | 5 | 0,4 |
| W846.0009 | W846.TND06CIN | 5 | 7 | 1.5 | 1 | 6.5 | 6 | 12 | 6 | 0.7 |
| W846.0010 | W846.TND08CIN | 6.5 | 9 | 1.8 | 1 | 8.5 | 6 | 12 | 8 | 1,6 |
| W846.0011 | W846.TND10CIN | 8 | 13.5 | 2.7 | 2.5 | 12 | 10 | 20 | 10 | 3 |
| W846.0012 | W846.TND12CIN | 10 | 16 | 3.5 | 2.5 | 14 | 15 | 25 | 12 | 6 |