

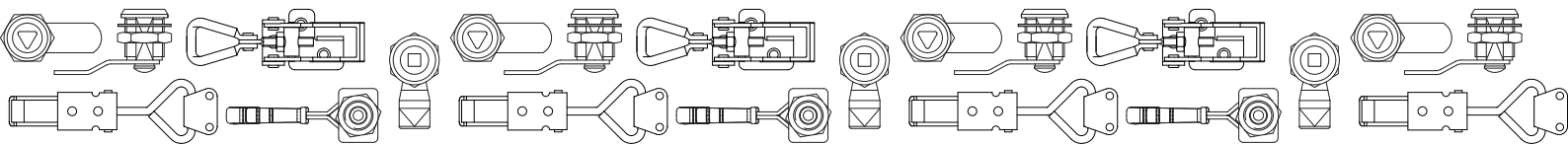


**GROUP - 10**

## LOCKING AND LATCHING SYSTEMS

### BOTECA Locking and Latching Systems

Various latching systems: 1/4 turn locks, bracket systems, toggle latches and toggle clamps. For detailed information on the specifications of each individual product please consult the technical sheet.



# J305

## PLASTIC CAM FOR SIMPLE LATCHING



**Materials:**

Reinforced polyamide.  
Resistant to oils and greases.

**Surface finish:**

Satin.

**Colour:**

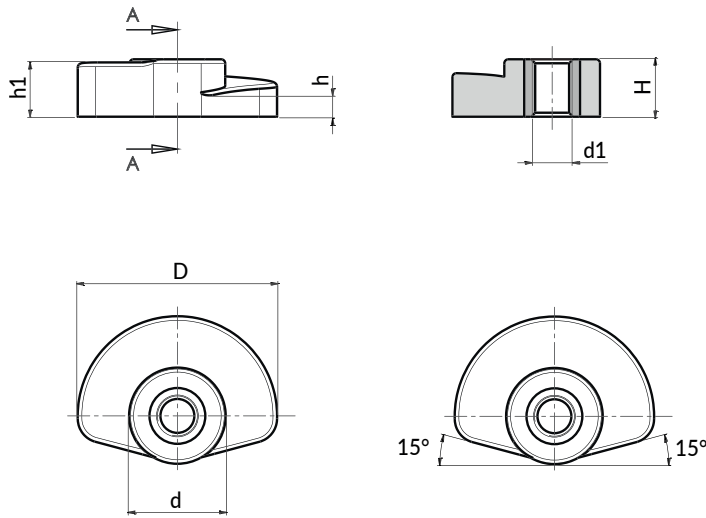
Black (RAL 9011).

**Inserts:**

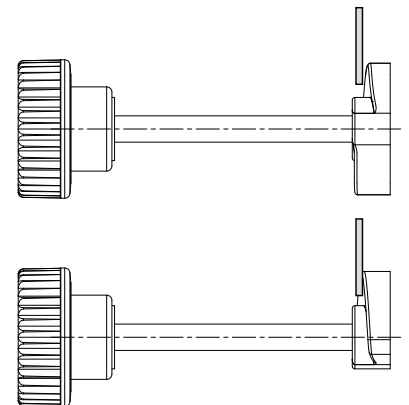
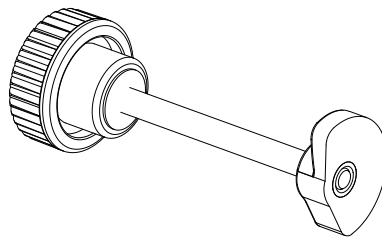
Brass insert with threaded through hole (thread tolerance 6H).

**Special Requests:**

- None.



This cam can be used in combination with any handwheel with stud. In this way, as illustrated in the sketch to the side, the assembly becomes a simple latch for securing doors. Turning the handwheel also rotates the cam, which, being a spiral shape, varies the grip thickness to latch onto the door.



Code	art.	D	d	H	h	h1	d1 <sub>6H</sub>	
J30525.0001	J30525.TM0501	25	12	7,2	3	6,8	M5	3



# J128



Zamak

C10



## UNIVERSAL QUARTER TURN CAM LOCK, M22 THREAD WITH T-HANDLE

### Materials:

- (1) T-handle made in zamak alloy (zinc, aluminium, copper).
- (2) Die-cast zamak lock body M22x1.5 (stator) and rotor.
- (3) Die-cast zamak hexagon lock nut M22x1.5.
- (4) Rubber gasket.
- (5) Steel cam (E=0 straight, E=2,4,6,8,10 formed out).
- (6) Phillips steel fixing screw M6x10.

### Surface finish:

#### L128-01

- (1) Satin.
- (2-3-4-5-6) Smooth.

#### L128-L

Smooth.

### Colour:

#### L128-01

- (1) Black epoxy powder coated (RAL 9011).
- (2-3-4-5-6) Standard galvanising.

#### L128-L

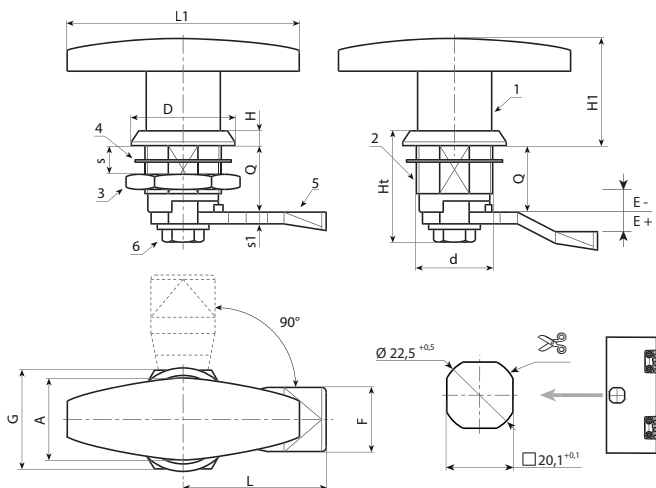
- (1) Bright chrome plating.
- (2-3-4-5-6) Standard galvanising.



### Rotation: 90°

### Special Requests:

- Upon request and for a minimum of 50 pieces, rotors can be supplied with height Q= 30 and 36.



### Version J128-01: black coated.

Code	Art.	d	Q	L1	L	E	F	D	A	G	H1	Ht	H	H1	S(max.)	s1	g
-	J12822.Z18E-4X4501	M22	18	78	45	-4	19,5	32	23	27	38	32,5	6	38	8	4	-
-	J12822.Z18E-2X4501	M22	18	78	45	-2	19,5	32	23	27	38	32,5	6	38	8	4	-
J12822.0002	J12822.Z18E00X4501	M22	18	78	45	0	19,5	32	23	27	38	32,5	6	38	8	4	-
-	J12822.Z18E02X4501	M22	18	78	45	2	19,5	32	23	27	38	32,5	6	38	8	4	-
-	J12822.Z18E04X4501	M22	18	78	45	4	19,5	32	23	27	38	32,5	6	38	8	4	-
-	J12822.Z18E06X4501	M22	18	78	46	6	19,5	32	23	27	38	32,5	6	38	8	4	-
-	J12822.Z18E08X4501	M22	18	78	45	8	19,5	32	23	27	38	32,5	6	38	8	4	-
-	J12822.Z18E10X4501	M22	18	78	45	10	19,5	32	23	27	38	32,5	6	38	8	4	-
-	J12822.Z18E12X4501	M22	18	78	45	12	19,5	32	23	27	38	32,5	6	38	8	4	-

### Version J128-L: chromed.

Code	Art.	d	Q	L1	L	E	F	D	A	G	H1	Ht	H	H1	S(max.)	s1	g
-	J12822.Z18E-4X45L	M22	18	78	45	-4	19,5	32	23	27	38	32,5	6	38	8	4	-
-	J12822.Z18E-2X45L	M22	18	78	45	-2	19,5	32	23	27	38	32,5	6	38	8	4	-
J12822.0001	J12822.Z18E00X45L	M22	18	78	45	0	19,5	32	23	27	38	32,5	6	38	8	4	-
-	J12822.Z18E02X45L	M22	18	78	45	2	19,5	32	23	27	38	32,5	6	38	8	4	-
-	J12822.Z18E04X45L	M22	18	78	45	4	19,5	32	23	27	38	32,5	6	38	8	4	-
-	J12822.Z18E06X45L	M22	18	78	46	6	19,5	32	23	27	38	32,5	6	38	8	4	-
-	J12822.Z18E08X45L	M22	18	78	45	8	19,5	32	23	27	38	32,5	6	38	8	4	-
-	J12822.Z18E10X45L	M22	18	78	45	10	19,5	32	23	27	38	32,5	6	38	8	4	-
-	J12822.Z18E12X45L	M22	18	78	45	12	19,5	32	23	27	38	32,5	6	38	8	4	-



## UNIVERSAL QUARTER TURN CAM LOCK, M22 THREAD WITH T-HANDLE AND LOCK

### Materials:

- (1) T-handle made in zamak alloy (zinc, aluminium, copper).
- (2) Die-cast zamak lock body M22x1.5 (stator) and rotor.
- (3) Die-cast zamak hexagon lock nut M22x1.5.
- (4) Rubber gasket.
- (5) Steel cam (E=0 straight, E=2,4,6,8,10 formed out).
- (6) Phillips steel fixing screw M6x10.
- (7) Stainless steel lock cylinder, keyed alike.

### Surface finish:

#### L129-01

- (1) Satin.
- (2-3-4-5-6) Smooth.

#### L129-L

Smooth.

### Colour:

#### L128-01

- (1) Black epoxy powder coated (RAL 9011).
- (2-3-4-5-6) Standard galvanising.

#### L128-L

- (1) Bright chrome plating.
- (2-3-4-5-6) Standard galvanising.

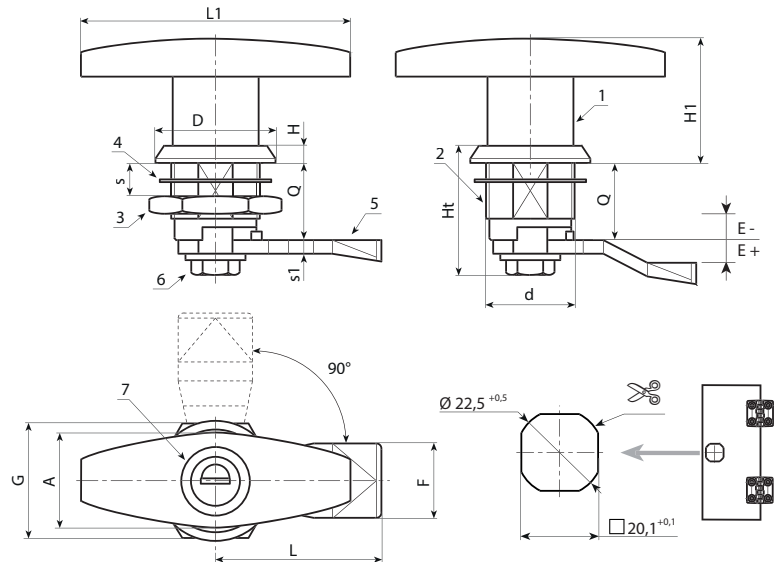
### Key:

Pair of keyed alike keys with plastic body.

### Rotation: 90°

### Special Requests:

- Upon request and for a minimum of 50 pieces, rotors can be supplied with height Q= 30 and 36.



Version J129-01: black coated.

Code	Art.	d	Q	L1	L	E	F	D	A	G	H1	Ht	H	H1	S(max.)	s1	g
J12922.0004	J12922.Z18E-4X4501	M22	18	78	45	-4	19	32	23	27	38	32,5	6	38	8	4	-
J12922.0005	J12922.Z18E-2X4501	M22	18	78	45	-2	19	32	23	27	38	32,5	6	38	8	4	-
J12922.0001	J12922.Z18E00X4501	M22	18	78	45	0	19,5	32	23	27	38	32,5	6	38	8	4	-
J12922.0006	J12922.Z18E02X4501	M22	18	78	45	2	19	32	23	27	38	32,5	6	38	8	4	-
J12922.0007	J12922.Z18E04X4501	M22	18	78	45	4	19	32	23	27	38	32,5	6	38	8	4	-
J12922.0008	J12922.Z18E06X4501	M22	18	78	46	6	19,5	32	23	27	38	32,5	6	38	8	4	-
J12922.0003	J12922.Z18E08X4501	M22	18	78	45	8	19,5	32	23	27	38	32,5	6	38	8	4	-
J12922.0009	J12922.Z18E10X4501	M22	18	78	45	10	19,5	32	23	27	38	32,5	6	38	8	4	-
J12922.0010	J12922.Z18E12X4501	M22	18	78	45	12	19,5	32	23	27	38	32,5	6	38	8	4	-

Version J129-L: chromed.

Code	Art.	d	Q	L1	L	E	F	D	A	G	H1	Ht	H	H1	S(max.)	s1	g
J12922.0011	J12922.Z18E-4X45L	M22	18	78	45	-4	19	32	23	27	38	32,5	6	38	8	4	-
J12922.0012	J12922.Z18E-2X45L	M22	18	78	45	-2	19	32	23	27	38	32,5	6	38	8	4	-
J12922.0002	J12922.Z18E00X45L	M22	18	78	45	0	19,5	32	23	27	38	32,5	6	38	8	4	-
J12922.0013	J12922.Z18E02X45L	M22	18	78	45	2	19	32	23	27	38	32,5	6	38	8	4	-
J12922.0014	J12922.Z18E04X45L	M22	18	78	45	4	19,5	32	23	27	38	32,5	6	38	8	4	-
J12922.0015	J12922.Z18E06X45L	M22	18	78	46	6	19,5	32	23	27	38	32,5	6	38	8	4	-
J12922.0016	J12922.Z18E08X45L	M22	18	78	45	8	19,5	32	23	27	38	32,5	6	38	8	4	-
J12922.0017	J12922.Z18E10X45L	M22	18	78	45	10	19,5	32	23	27	38	32,5	6	38	8	4	-
J12922.0018	J12922.Z18E12X45L	M22	18	78	45	12	19,5	32	23	27	38	32,5	6	38	8	4	-

## UNIVERSAL QUARTER TURN ZAMAK CAM LOCK M22 THREAD WITH WING PIN SOCKET KEY

### Materials:

- (1) Die-cast zamak body M22x1.5 (stator).
- (2) Die-cast zamak groove shaped for wing pin key.
- (3) Die-cast zamak hexagon lock nut M22x1.5.
- (4) Rubber gasket.
- (5) Steel cam (E=0 straight, E=2,4,6,8,10 formed out, E=-2 formed in).
- (6) Phillips steel fixing screw M6x10.

### Surface finish:

#### L114-01

- (1) Satin.
- (2-3-4-5-6) Smooth.

#### L114-L

Smooth.

### Colour:

#### L114-01

- (1) Black epoxy powder coated (RAL 9011).
- (2-3-4-5-6) Standard galvanising.

#### L114-L

- (1) Bright chrome plating.
- (2-3-4-5-6) Standard galvanising.



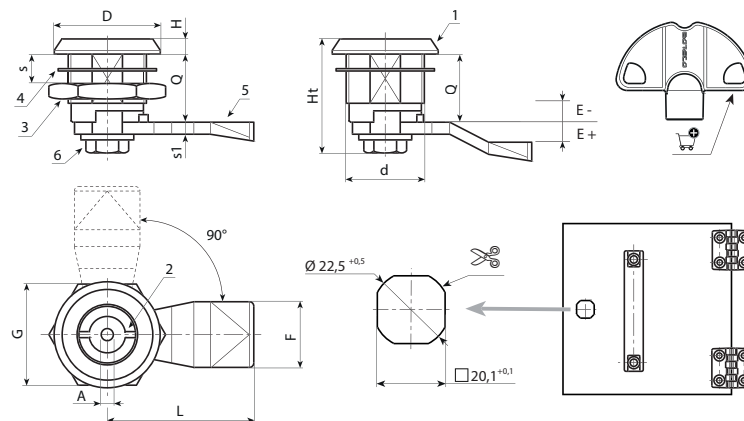
### Key (optional):

Red polyamide key (PA6), art. J090.  
ATTENTION: The key is not supplied. To be ordered separately. [page 399].

### Rotation: 90°

### Special Requests:

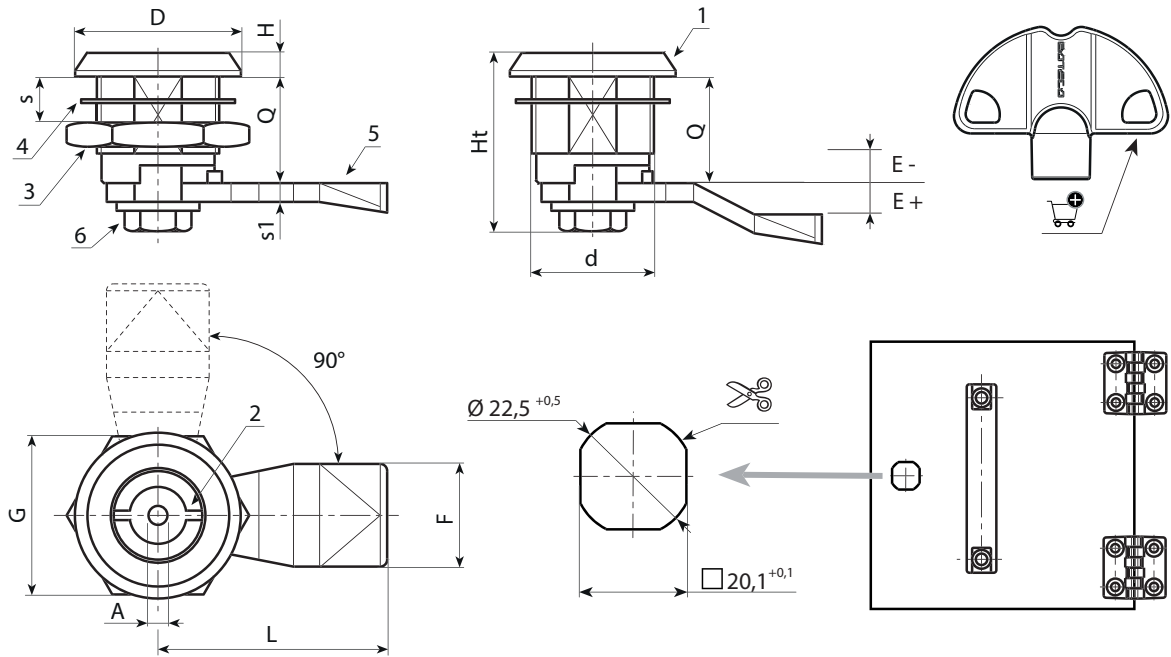
- Upon request the key can be supplied with the lock. Add letter C at the end of the main code.



Version J114-01: black coated.

Code	Art.	A	d	D	L	Q	E	F	G	Ht	H	S(max.)	s1		Key
-	J11422.Z03E-4X4501	3	M22	28	45	18	-4	19	27	31,5	4	8	4	-	J09050.TP0316
-	J11422.Z03E-2X4501	3	M22	28	45	18	-2	19	27	31,5	4	8	4	-	J09050.TP0316
-	J11422.Z03E00X4501	3	M22	28	45	18	0	19	27	31,5	4	8	4	-	J09050.TP0316
-	J11422.Z03E02X4501	3	M22	28	45	18	2	19	27	31,5	4	8	4	-	J09050.TP0316
-	J11422.Z03E04X4501	3	M22	28	45	18	4	19	27	31,5	4	8	4	-	J09050.TP0316
-	J11422.Z03E06X4501	3	M22	28	45	18	6	19	27	31,5	4	8	4	-	J09050.TP0316
-	J11422.Z03E08X4501	3	M22	28	45	18	8	19	27	31,5	4	8	4	-	J09050.TP0316
-	J11422.Z03E10X4501	3	M22	28	45	18	10	19	27	31,5	4	8	4	-	J09050.TP0316
-	J11422.Z03E12X4501	3	M22	28	45	18	12	19	27	31,5	4	8	4	-	J09050.TP0316
-	J11422.Z05E-4X4501	5	M22	28	45	18	-4	19	27	31,5	4	8	4	-	J09050.TP0516
-	J11422.Z05E-2X4501	5	M22	28	45	18	-2	19	27	31,5	4	8	4	-	J09050.TP0516
-	J11422.Z05E00X4501	5	M22	28	45	18	0	19	27	31,5	4	8	4	-	J09050.TP0516
-	J11422.Z05E02X4501	5	M22	28	45	18	2	19	27	31,5	4	8	4	-	J09050.TP0516
-	J11422.Z05E04X4501	5	M22	28	45	18	4	19	27	31,5	4	8	4	-	J09050.TP0516
-	J11422.Z05E06X4501	5	M22	28	45	18	6	19	27	31,5	4	8	4	-	J09050.TP0516
-	J11422.Z05E08X4501	5	M22	28	45	18	8	19	27	31,5	4	8	4	-	J09050.TP0516
-	J11422.Z05E10X4501	5	M22	28	45	18	10	19	27	31,5	4	8	4	-	J09050.TP0516
-	J11422.Z05E12X4501	5	M22	28	45	18	12	19	27	31,5	4	8	4	-	J09050.TP0516

## UNIVERSAL QUARTER TURN ZAMAK CAM LOCK M22 THREAD WITH WING PIN SOCKET KEY



Version J114-L: chromed.

Code	Art.	A	d	D	L	Q	E	F	G	Ht	H	S(max.)	s1		Key
-	J11422.Z03E-4X45L	3	M22	28	45	18	-4	19	27	31,5	4	8	4	-	J09050.TP0316
-	J11422.Z03E-2X45L	3	M22	28	45	18	-2	19	27	31,5	4	8	4	-	J09050.TP0316
-	J11422.Z03E00X45L	3	M22	28	45	18	0	19	27	31,5	4	8	4	-	J09050.TP0316
-	J11422.Z03E02X45L	3	M22	28	45	18	2	19	27	31,5	4	8	4	-	J09050.TP0316
-	J11422.Z03E04X45L	3	M22	28	45	18	4	19	27	31,5	4	8	4	-	J09050.TP0316
-	J11422.Z03E06X45L	3	M22	28	45	18	6	19	27	31,5	4	8	4	-	J09050.TP0316
-	J11422.Z03E08X45L	3	M22	28	45	18	8	19	27	31,5	4	8	4	-	J09050.TP0316
-	J11422.Z03E10X45L	3	M22	28	45	18	10	19	27	31,5	4	8	4	-	J09050.TP0316
-	J11422.Z03E12X45L	3	M22	28	45	18	12	19	27	31,5	4	8	4	-	J09050.TP0316
-	J11422.Z05E-4X45L	5	M22	28	45	18	-4	19	27	31,5	4	8	4	-	J09050.TP0516
-	J11422.Z05E-2X45L	5	M22	28	45	18	-2	19	27	31,5	4	8	4	-	J09050.TP0516
-	J11422.Z05E00X45L	5	M22	28	45	18	0	19	27	31,5	4	8	4	-	J09050.TP0516
-	J11422.Z05E02X45L	5	M22	28	45	18	2	19	27	31,5	4	8	4	-	J09050.TP0516
-	J11422.Z05E04X45L	5	M22	28	45	18	4	19	27	31,5	4	8	4	-	J09050.TP0516
-	J11422.Z05E06X45L	5	M22	28	45	18	6	19	27	31,5	4	8	4	-	J09050.TP0516
-	J11422.Z05E08X45L	5	M22	28	45	18	8	19	27	31,5	4	8	4	-	J09050.TP0516
-	J11422.Z05E10X45L	5	M22	28	45	18	10	19	27	31,5	4	8	4	-	J09050.TP0516
-	J11422.Z05E12X45L	5	M22	28	45	18	12	19	27	31,5	4	8	4	-	J09050.TP0516



## UNIVERSAL QUARTER TURN ZAMAK CAM LOCK M22 THREAD WITH TRIANGLE SOCKET KEY

### Materials:

- (1) Die-cast zamak body M22x1.5 (stator).
- (2) Triangular shaped die-cast zamak groove.
- (3) Die-cast zamak hexagon lock nut M22x1.5.
- (4) Rubber gasket.
- (5) Steel cam (E=0 straight, E=2,4,6,8,10 formed out, E=-2 formed in).
- (6) Phillips steel fixing screw M6x10.

### Surface finish:

#### L115-01

- (1) Satin.
- (2-3-4-5-6) Smooth.

#### L115-L

- (1) Smooth.

### Colour:

#### L115-01

- (1) Black epoxy powder coated (RAL 9011).
- (2-3-4-5-6) Standard galvanising.

#### L115-L

- (1) Bright chrome plating.
- (2-3-4-5-6) Standard galvanising.



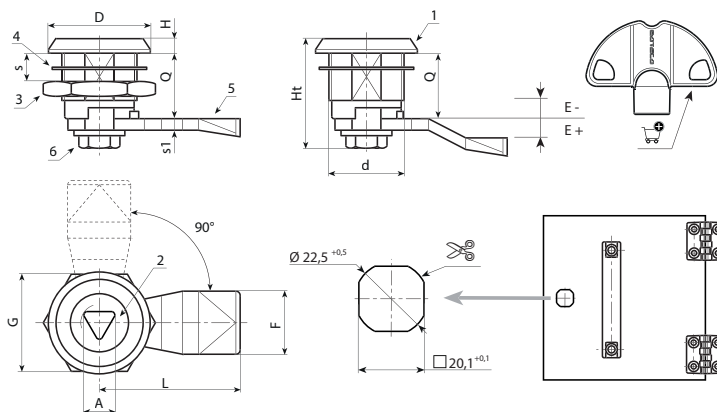
### Key (optional):

- Red polyamide key (PA6), art. J090.  
ATTENTION: The key is not supplied. To be ordered separately. [page 399].

### Rotation: 90°

### Special Requests:

- Upon request the key can be supplied with the lock. Add letter C at the end of the main code.



### Version J115-01: black coated.

Code	Art.	A	d	D	L	Q	E	F	G	Ht	H	S(max.)	s1	Ⓒ	Key
-	J11522.Z08E-4X4501	8	M22	28	45	18	-4	19	27	31,5	4	8	4	-	J09050.TT0816
-	J11522.Z08E-2X4501	8	M22	28	45	18	-2	19	27	31,5	4	8	4	-	J09050.TT0816
-	J11522.Z08E00X4501	8	M22	28	45	18	0	19	27	31,5	4	8	4	-	J09050.TT0816
-	J11522.Z08E02X4501	8	M22	28	45	18	2	19	27	31,5	4	8	4	-	J09050.TT0816
-	J11522.Z08E04X4501	8	M22	28	45	18	4	19	27	31,5	4	8	4	-	J09050.TT0816
-	J11522.Z08E06X4501	8	M22	28	45	18	6	19	27	31,5	4	8	4	-	J09050.TT0816
-	J11522.Z08E08X4501	8	M22	28	45	18	8	19	27	31,5	4	8	4	-	J09050.TT0816
-	J11522.Z08E10X4501	8	M22	28	45	18	10	19	27	31,5	4	8	4	-	J09050.TT0816
-	J11522.Z08E12X4501	8	M22	28	45	18	12	19	27	31,5	4	8	4	-	J09050.TT0816

### Version J115-L: chromed.

Code	Art.	A	d	D	L	Q	E	F	G	Ht	H	S(max.)	s1	Ⓒ	Key
-	J11522.Z08E-4X45L	8	M22	28	45	18	-4	19	27	31,5	4	8	4	-	J09050.TT0816
-	J11522.Z08E-2X45L	8	M22	28	45	18	-2	19	27	31,5	4	8	4	-	J09050.TT0816
-	J11522.Z08E00X45L	8	M22	28	45	18	0	19	27	31,5	4	8	4	-	J09050.TT0816
-	J11522.Z08E02X45L	8	M22	28	45	18	2	19	27	31,5	4	8	4	-	J09050.TT0816
-	J11522.Z08E04X45L	8	M22	28	45	18	4	19	27	31,5	4	8	4	-	J09050.TT0816
-	J11522.Z08E06X45L	8	M22	28	45	18	6	19	27	31,5	4	8	4	-	J09050.TT0816
-	J11522.Z08E08X45L	8	M22	28	45	18	8	19	27	31,5	4	8	4	-	J09050.TT0816
-	J11522.Z08E10X45L	8	M22	28	45	18	10	19	27	31,5	4	8	4	-	J09050.TT0816
-	J11522.Z08E12X45L	8	M22	28	45	18	12	19	27	31,5	4	8	4	-	J09050.TT0816



# J116

**NEW**

+135°  
-20°

Zamak

C10

RoHS  
COMPLIANT

## UNIVERSAL QUARTER TURN ZAMAK CAM LOCK M22 THREAD WITH SQUARE SOCKET KEY

### Materials:

- (1) Die-cast zamak body M22x1.5 (stator).
- (2) Square shaped die-cast zamak groove.
- (3) Die-cast zamak hexagon lock nut M22x1,5.
- (4) Rubber gasket.
- (5) Steel cam (E=0 straight, E=2,4,6,8,10 formed out, E=-2 formed in).
- (6) Phillips steel fixing screw M6x10.

### Surface finish:

#### L116-01

- (1) Satin.
- (2-3-4-5-6) Smooth.

#### L116-L

Smooth.

### Colour:

#### L116-01

- (1) Black epoxy powder coated (RAL 9011).
- (2-3-4-5-6) Standard galvanising.

#### L116-L

- (1) Bright chrome plating.
- (2-3-4-5-6) Standard galvanising.

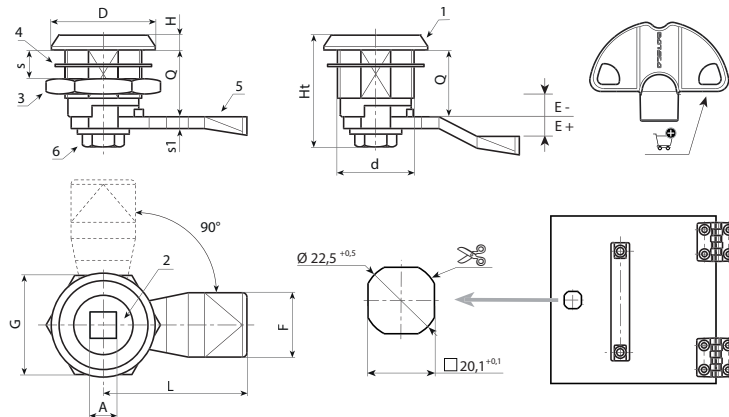
### Key (optional):

Red polyamide key (PA6), art. J090.  
ATTENTION: The key is not supplied. To be ordered separately. [page 399].

### Rotation: 90°

### Special Requests:

- Upon request the key can be supplied with the lock. Add letter C at the end of the main code.



Version J116-01: black coated.

Code	Art.	A	d	D	L	Q	E	F	G	Ht	H	S(max.)	s1	g	Key
-	J11622.Z08E-4X4501	8	M22	28	45	18	-4	19	27	31,5	4	8	4	-	J09050.TQ0816
-	J11622.Z08E-2X4501	8	M22	28	45	18	-2	19	27	31,5	4	8	4	-	J09050.TQ0816
-	J11622.Z08E00X4501	8	M22	28	45	18	0	19	27	31,5	4	8	4	-	J09050.TQ0816
-	J11622.Z08E02X4501	8	M22	28	45	18	2	19	27	31,5	4	8	4	-	J09050.TQ0816
-	J11622.Z08E04X4501	8	M22	28	45	18	4	19	27	31,5	4	8	4	-	J09050.TQ0816
-	J11622.Z08E06X4501	8	M22	28	45	18	6	19	27	31,5	4	8	4	-	J09050.TQ0816
-	J11622.Z08E08X4501	8	M22	28	45	18	8	19	27	31,5	4	8	4	-	J09050.TQ0816
-	J11622.Z08E10X4501	8	M22	28	45	18	10	19	27	31,5	4	8	4	-	J09050.TQ0816
-	J11622.Z08E12X4501	8	M22	28	45	18	12	19	27	31,5	4	8	4	-	J09050.TQ0816

Version J116-L: chromed.

Code	Art.	A	d	D	L	Q	E	F	G	Ht	H	S(max.)	s1	g	Key
-	J11622.Z08E-4X45L	8	M22	28	45	18	-4	19	27	31,5	4	8	4	-	J09050.TQ0816
-	J11622.Z08E-2X45L	8	M22	28	45	18	-2	19	27	31,5	4	8	4	-	J09050.TQ0816
-	J11622.Z08E00X45L	8	M22	28	45	18	0	19	27	31,5	4	8	4	-	J09050.TQ0816
-	J11622.Z08E04X45L	8	M22	28	45	18	4	19	27	31,5	4	8	4	-	J09050.TQ0816
-	J11622.Z08E06X45L	8	M22	28	45	18	6	19	27	31,5	4	8	4	-	J09050.TQ0816
-	J11622.Z08E08X45L	8	M22	28	45	18	8	19	27	31,5	4	8	4	-	J09050.TQ0816
-	J11622.Z08E10X45L	8	M22	28	45	18	10	19	27	31,5	4	8	4	-	J09050.TQ0816
-	J11622.Z08E12X45L	8	M22	28	45	18	12	19	27	31,5	4	8	4	-	J09050.TQ0816

**BOTECO**  
**LOCKINGS**

## UNIVERSAL QUARTER TURN ZAMAK CAM LOCK M22 THREAD WITH SLOTTED HEAD

### Materials:

- (1) Die-cast zamak body M22x1.5 (stator).
- (2) Slotted die-cast zamak groove.
- (3) Die-cast zamak hexagon lock nut M22x1.5.
- (4) Rubber gasket.
- (5) Steel cam (E=0 straight, E=2,4,6,8,10 formed out, E=-2 formed in).
- (6) Phillips steel fixing screw M6x10.

### Surface finish:

#### L117-01

- (1) Satin.
- (2-3-4-5-6) Smooth.

#### L117-L

Smooth.

### Colour:

#### L117-01

- (1) Black epoxy powder coated (RAL 9011).
- (2-3-4-5-6) Standard galvanising.

#### L117-L

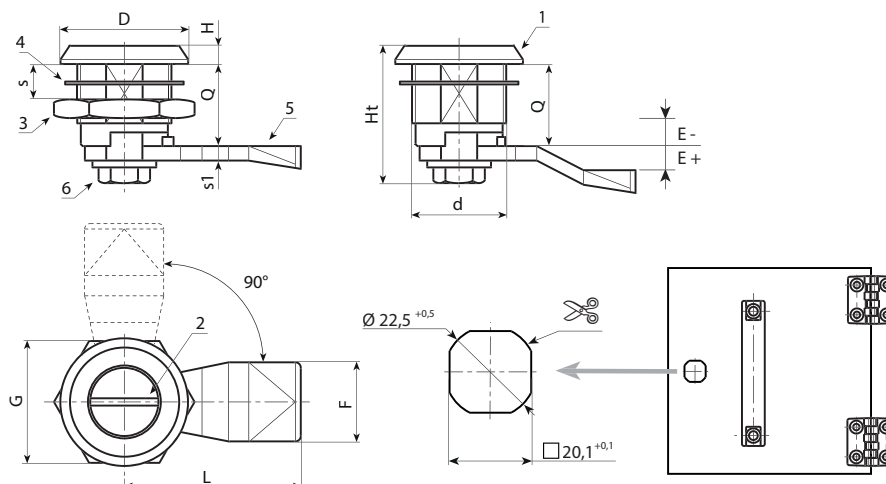
- (1) Bright chrome plating.
- (2-3-4-5-6) Standard galvanising.



**10** Rotation:  
90°.

### Special Requests:

- None.



Version J117-01: black coated.

Code	Art.	d	D	L	Q	E	F	G	Ht	H	S(max.)	s1	
-	J11722.Z00E-4X4501	M22	28	45	18	-4	19	27	31,5	4	8	4	-
-	J11722.Z00E-2X4501	M22	28	45	18	-2	19	27	31,5	4	8	4	-
-	J11722.Z00E00X4501	M22	28	45	18	0	19	27	31,5	4	8	4	-
-	J11722.Z00E02X4501	M22	28	45	18	2	19	27	31,5	4	8	4	-
-	J11722.Z00E04X4501	M22	28	45	18	4	19	27	31,5	4	8	4	-
-	J11722.Z00E06X4501	M22	28	45	18	6	19	27	31,5	4	8	4	-
-	J11722.Z00E08X4501	M22	28	45	18	8	19	27	31,5	4	8	4	-
-	J11722.Z00E10X4501	M22	28	45	18	10	19	27	31,5	4	8	4	-
-	J11722.Z00E12X4501	M22	28	45	18	12	19	27	31,5	4	8	4	-

Version J117-L: chromed.

Code	Art.	d	D	L	Q	E	F	G	Ht	H	S(max.)	s1	
-	J11722.Z00E-4X45L	M22	28	45	18	-4	19	27	31,5	4	8	4	-
-	J11722.Z00E-2X45L	M22	28	45	18	-2	19	27	31,5	4	8	4	-
-	J11722.Z00E00X45L	M22	28	45	18	0	19	27	31,5	4	8	4	-
-	J11722.Z00E02X45L	M22	28	45	18	2	19	27	31,5	4	8	4	-
-	J11722.Z00E04X45L	M22	28	45	18	4	19	27	31,5	4	8	4	-
-	J11722.Z00E06X45L	M22	28	45	18	6	19	27	31,5	4	8	4	-
-	J11722.Z00E08X45L	M22	28	45	18	8	19	27	31,5	4	8	4	-
-	J11722.Z00E10X45L	M22	28	45	18	10	19	27	31,5	4	8	4	-
-	J11722.Z00E12X45L	M22	28	45	18	12	19	27	31,5	4	8	4	-

## UNIVERSAL QUARTER TURN PLASTIC CAM LOCK M22 THREAD WITH WING PIN SOCKET KEY

**Materials:**

- (1) Lock body M22x1.5 (stator) in reinforced PA6.6 polyamide. Resistant to oils and greases.
- (2) Groove shaped for wing pin key, in reinforced PA6.6 polyamide.
- (3) Die-cast zamak hexagon lock nut M22x1,5.
- (4) Rubber gasket.
- (5) Steel cam (E=0 straight, E=2,4,6,8,10 formed out, E=-2 formed in).
- (6) Phillips steel fixing screw M6x10.

**Surface finish:**

- (1) Satin.
- (2-3-4-5-6) Smooth.

**Colour:**

- (1) Black (RAL 9011).
- (2-3-4-5-6) Standard galvanising.

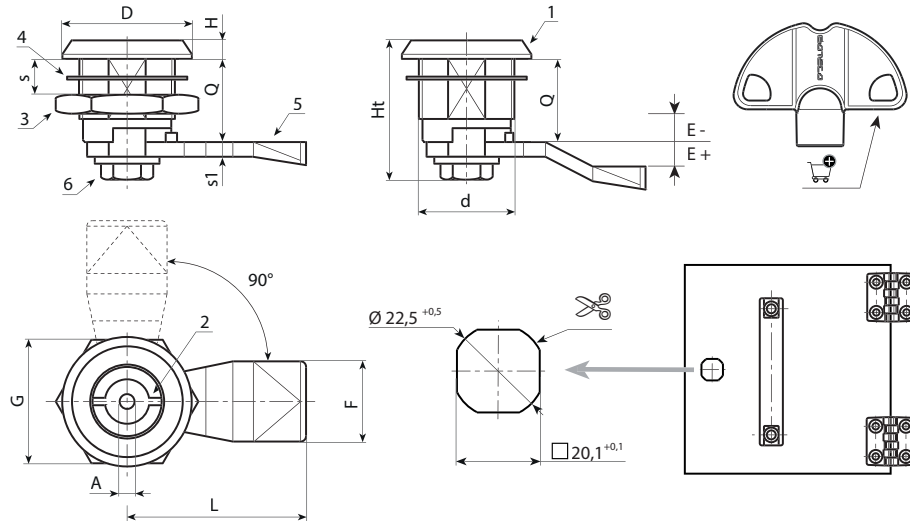
**Key (optional):**

Red polyamide key (PA6), art. J090.  
ATTENTION: The key is not supplied. To be ordered separately. [page 399].

**Rotation: 90°**

**Special Requests:**

- Upon request the key can be supplied with the lock. Add letter C at the end of the main code.



Code	Art.	A	d	D	L	Q	E	F	G	Ht	H	S(max.)	s1	g	Key
-	J12422.T03E-4X4501	3	M22	28	45	18	-4	19	27	31,5	4	8	4	-	J09050.TP0316
-	J12422.T03E-2X4501	3	M22	28	45	18	-2	19	27	31,5	4	8	4	-	J09050.TP0316
-	J12422.T03E00X4501	3	M22	28	45	18	0	19	27	31,5	4	8	4	-	J09050.TP0316
-	J12422.T03E02X4501	3	M22	28	45	18	2	19	27	31,5	4	8	4	-	J09050.TP0316
-	J12422.T03E04X4501	3	M22	28	45	18	4	19	27	31,5	4	8	4	-	J09050.TP0316
-	J12422.T03E06X4501	3	M22	28	45	18	6	19	27	31,5	4	8	4	-	J09050.TP0316
-	J12422.T03E08X4501	3	M22	28	45	18	8	19	27	31,5	4	8	4	-	J09050.TP0316
-	J12422.T03E10X4501	3	M22	28	45	18	10	19	27	31,5	4	8	4	-	J09050.TP0316
-	J12422.T03E12X4501	3	M22	28	45	18	12	19	27	31,5	4	8	4	-	J09050.TP0316
-	J12422.T05E-4X4501	5	M22	28	45	18	-4	19	27	31,5	4	8	4	-	J09050.TP0516
-	J12422.T05E-2X4501	5	M22	28	45	18	-2	19	27	31,5	4	8	4	-	J09050.TP0516
-	J12422.T05E00X4501	5	M22	28	45	18	0	19	27	31,5	4	8	4	-	J09050.TP0516
-	J12422.T05E02X4501	5	M22	28	45	18	2	19	27	31,5	4	8	4	-	J09050.TP0516
-	J12422.T05E04X4501	5	M22	28	45	18	4	19	27	31,5	4	8	4	-	J09050.TP0516
-	J12422.T05E06X4501	5	M22	28	45	18	6	19	27	31,5	4	8	4	-	J09050.TP0516
-	J12422.T05E08X4501	5	M22	28	45	18	8	19	27	31,5	4	8	4	-	J09050.TP0516
-	J12422.T05E10X4501	5	M22	28	45	18	10	19	27	31,5	4	8	4	-	J09050.TP0516
-	J12422.T05E12X4501	5	M22	28	45	18	12	19	27	31,5	4	8	4	-	J09050.TP0516

## UNIVERSAL QUARTER TURN PLASTIC CAM LOCK M22 THREAD WITH SQUARE SOCKET KEY

### Materials:

- (1) Lock body M22x1.5 (stator) in reinforced PA6.6 polyamide. Resistant to oils and greases.
- (2) Square shaped groove, in reinforced polyamide PA6.6.
- (3) Die-cast zamak hexagon lock nut M22x1,5.
- (4) Rubber gasket.
- (5) Steel cam (E=0 straight, E=2,4,6,8,10 formed out, E=-2 formed in).
- (6) Phillips steel fixing screw M6x10.

### Surface finish:

- (1) Satin.
- (2-3-4-5-6) Smooth.

### Colour:

- (1) Black (RAL 9011).
- (2-3-4-5-6) Standard galvanising.

### Key (optional):

Red polyamide key (PA6), art. J090.  
ATTENTION: The key is not supplied. To be ordered separately. [page 399].

### Rotation:

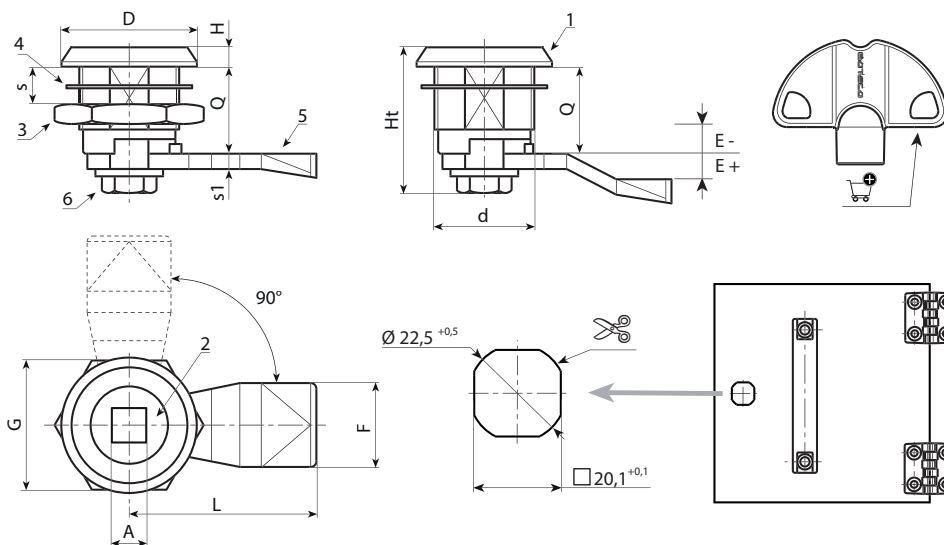
90°.



10

### Special Requests:

- Upon request the key can be supplied with the lock. Add letter C at the end of the main code.



Code	Art.	A	d	D	L	Q	E	F	G	Ht	H	s(max.)	s1	ⓐ	Key
-	J12622.T08E-4X4501	8	M22	28	45	18	-4	19	27	31,5	4	8	4	-	J09050.TQ0816
-	J12622.T08E-2X4501	8	M22	28	45	18	-2	19	27	31,5	4	8	4	-	J09050.TQ0816
-	J12622.T08E00X4501	8	M22	28	45	18	0	19	27	31,5	4	8	4	-	J09050.TQ0816
-	J12622.T08E02X4501	8	M22	28	45	18	2	19	27	31,5	4	8	4	-	J09050.TQ0816
-	J12622.T08E04X4501	8	M22	28	45	18	4	19	27	31,5	4	8	4	-	J09050.TQ0816
-	J12622.T08E06X4501	8	M22	28	45	18	6	19	27	31,5	4	8	4	-	J09050.TQ0816
-	J12622.T08E08X4501	8	M22	28	45	18	8	19	27	31,5	4	8	4	-	J09050.TQ0816
-	J12622.T08E10X4501	8	M22	28	45	18	10	19	27	31,5	4	8	4	-	J09050.TQ0816
-	J12622.T08E12X4501	8	M22	28	45	18	12	19	27	31,5	4	8	4	-	J09050.TQ0816

## UNIVERSAL QUARTER TURN PLASTIC CAM LOCK M22 THREAD WITH TRIANGLE SOCKET KEY

**Materials:**

- (1) Lock body M22x1.5 (stator) in reinforced PA6.6 polyamide. Resistant to oils and greases.
- (2) Triangular shaped groove, in reinforced polyamide PA6.6.
- (3) Die-cast zamak hexagon lock nut M22x1,5.
- (4) Rubber gasket.
- (5) Steel cam (E=0 straight, E=2,4,6,8,10 formed out, E=-2 formed in).
- (6) Phillips steel fixing screw M6x10.

**Surface finish:**

- (1) Satin.
- (2-3-4-5-6) Smooth.

**Colour:**

- (1) Black (RAL 9011).
- (2-3-4-5-6) Standard galvanising.

**Key (optional):**

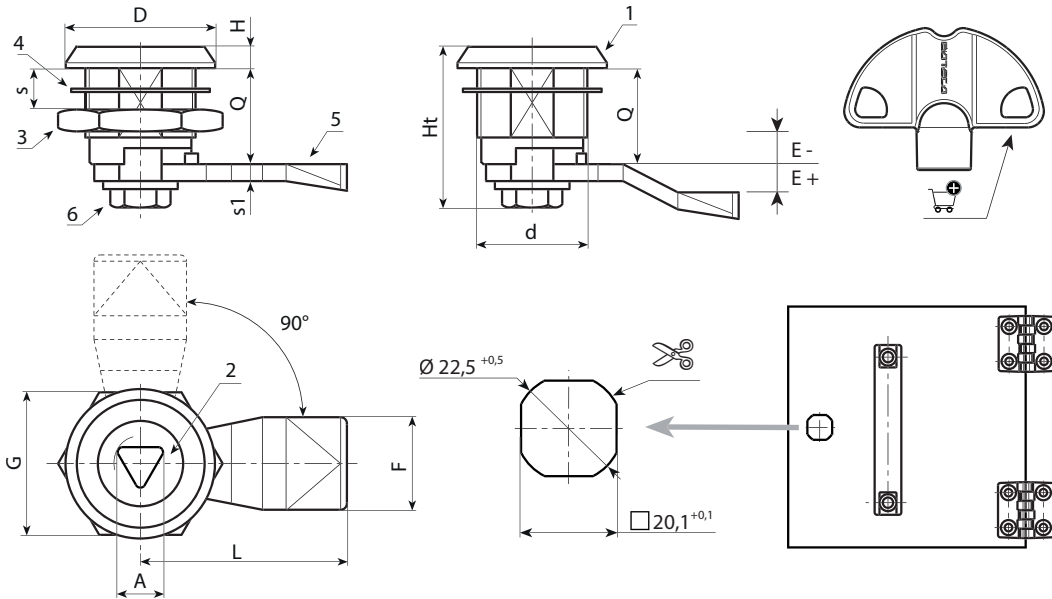
Red polyamide key (PA6), art. J090.  
ATTENTION: The key is not supplied. To be ordered separately. [page 399].

**Rotation:**

90°.

**Special Requests:**

- Upon request the key can be supplied with the lock. Add letter C at the end of the main code.



Code	Art.	A	d	D	L	Q	E	F	G	Ht	H	s(max.)	s1	g	Key
-	J12722.T08E-4X4501	8	M22	28	45	18	-4	19	27	31,5	4	8	4	-	J09050.TT0816
-	J12722.T08E-2X4501	8	M22	28	45	18	-2	19	27	31,5	4	8	4	-	J09050.TT0816
-	J12722.T08E00X4501	8	M22	28	45	18	0	19	27	31,5	4	8	4	-	J09050.TT0816
-	J12722.T08E02X4501	8	M22	28	45	18	2	19	27	31,5	4	8	4	-	J09050.TT0816
-	J12722.T08E04X4501	8	M22	28	45	18	4	19	27	31,5	4	8	4	-	J09050.TT0816
-	J12722.T08E06X4501	8	M22	28	45	18	6	19	27	31,5	4	8	4	-	J09050.TT0816
-	J12722.T08E08X4501	8	M22	28	45	18	8	19	27	31,5	4	8	4	-	J09050.TT0816
-	J12722.T08E10X4501	8	M22	28	45	18	10	19	27	31,5	4	8	4	-	J09050.TT0816
-	J12722.T08E12X4501	8	M22	28	45	18	12	19	27	31,5	4	8	4	-	J09050.TT0816



# J120



## UNIVERSAL QUARTER TURN PLASTIC CAM LOCK WITH QUICK INSTALL AND TRIANGLE SOCKET KEY

### Materials:

- (1) 20mm body with deformable fixing ribs, for snap fitting in sheet metal push tabs. Reinforced polyamide PA6.6. Resistant to oils and greases.
- (2) Triangular shaped groove, in reinforced PA6.6 polyamide.
- (3) Self-tapping Phillips steel fixing screw 4.2x10.
- (4) Steel cam (E=0 straight, E=2,4,6,8,10 formed out, E=-2 formed in).

### Surface finish:

- (1-2) Satin.
- (3-4) Smooth.

### Colour:

- (1-2) Black (RAL 9011).
- (3-4) Galvanising standard.

### Key (optional):

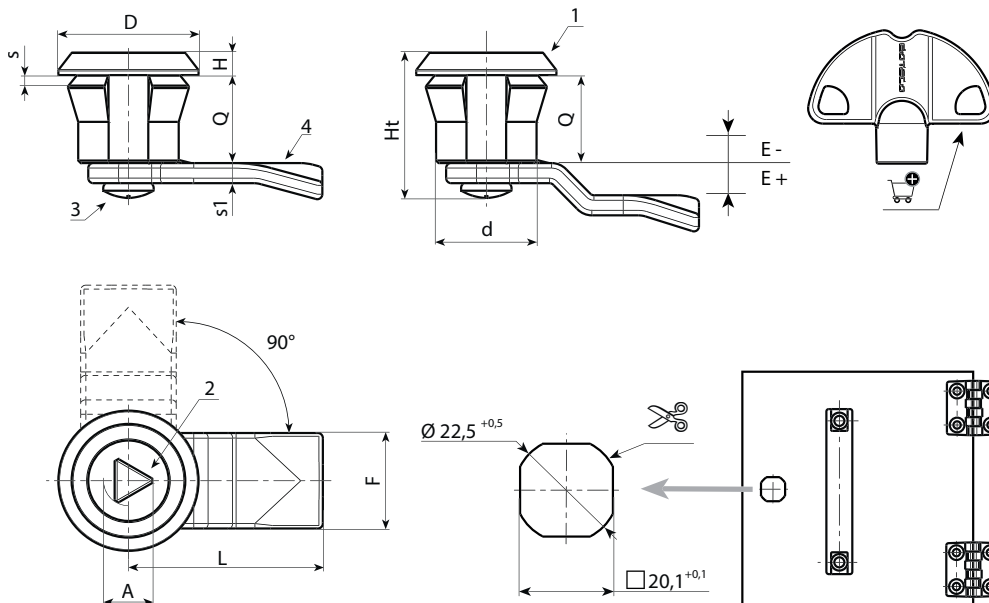
Red polyamide key (PA6), art. J090.  
**ATTENTION:** The key is not supplied. To be ordered separately. [page 399].

### Rotation:

90°.

### Special Requests:

- Upon request the key can be supplied with the lock. Add letter C at the end of the main code.



Code	Art.	A	d	D	L	Q	E	F	Ht	H	S(max.)	s1	g	Key
-	J12020.T08E-4X4501	8	20	28	45	18	-4	19	30	4	1-2	4	-	J09050.TT0816
-	J12020.T08E-2X4501	8	20	28	45	18	-2	19	30	4	1-2	4	-	J09050.TT0816
-	J12020.T08E00X4501	8	20	28	45	18	0	19	30	4	1-2	4	-	J09050.TT0816
-	J12020.T08E04X4501	8	20	28	45	18	4	19	30	4	1-2	4	-	J09050.TT0816
-	J12020.T08E06X4501	8	20	28	45	18	6	19	30	4	1-2	4	-	J09050.TT0816
-	J12020.T08E08X4501	8	20	28	45	18	8	19	30	4	1-2	4	-	J09050.TT0816
-	J12020.T08E10X4501	8	20	28	45	18	10	19	30	4	1-2	4	-	J09050.TT0816
-	J12020.T08E12X4501	8	20	28	45	18	12	19	30	4	1-2	4	-	J09050.TT0816

## UNIVERSAL QUARTER TURN PLASTIC CAM LOCK WITH QUICK INSTALL AND WITH SLOTTED HEAD

**Materials:**

- (1) 20mm body with deformable fixing ribs, for snap fitting in sheet metal push tabs. Reinforced polyamide PA6.6. Resistant to oils and greases.
- (2) Groove with slotted head, in reinforced PA6.6 polyamide.
- (3) Steel cam, (E=0 straight, E=2,4,6,8,10 formed out, E=-2 formed in).
- (4) Self-tapping Phillips steel fixing screw 4.2x10.

**Surface finish:**

- (1-2) Satin.
- (3-4) Smooth.

**Colour:**

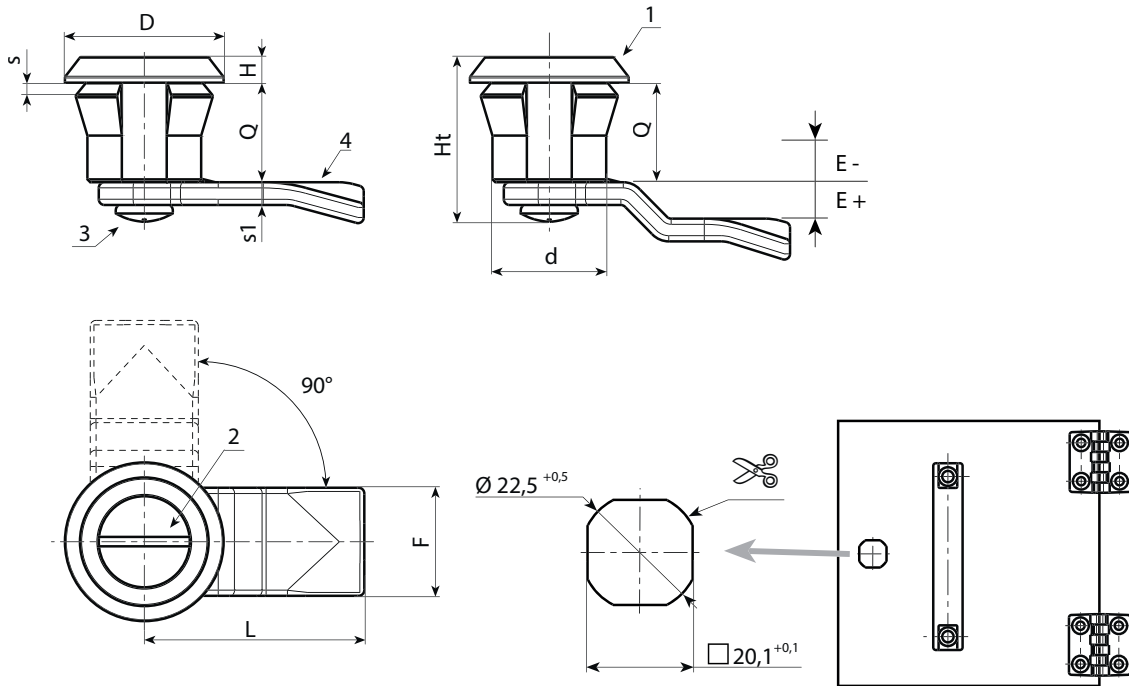
- (1-2) Black (RAL 9011).
- (3-4) Galvanising standard.

**Rotation:**

90°.

**Special Requests:**

- None.



Code	Art.	d	D	L	Q	E	F	Ht	H	s(max.)	s1	🔒
-	J12120.T00E-4X4501	20	28	45	18	-4	19	30	4	1-2	4	-
-	J12120.T00E-2X4501	20	28	45	18	-2	19	30	4	1-2	4	-
-	J12120.T00E00X4501	20	28	45	18	0	19	30	4	1-2	4	-
-	J12120.T00E02X4501	20	28	45	18	2	19	30	4	1-2	4	-
-	J12120.T00E04X4501	20	28	45	18	4	19	30	4	1-2	4	-
-	J12120.T00E06X4501	20	28	45	18	6	19	30	4	1-2	4	-
-	J12120.T00E08X4501	20	28	45	18	8	19	30	4	1-2	4	-
-	J12120.T00E10X4501	20	28	45	18	10	19	30	4	1-2	4	-
-	J12120.T00E12X4501	20	28	45	18	12	19	30	4	1-2	4	-



## UNIVERSAL QUARTER TURN PLASTIC CAM LOCK WITH QUICK INSTALL AND WING PIN SOCKET KEY

### Materials:

- (1) 20mm body with deformable fixing ribs, for snap fitting in sheet metal push tabs. Reinforced polyamide PA6.6. Resistant to oils and greases.
- (2) Groove shaped for wing pin key, in reinforced PA6.6 polyamide.
- (3) Steel cam, (E=0 straight, E=2,4,6,8,10 formed out, E=-2 formed in).
- (4) Self-tapping Phillips steel fixing screw 4.2x10.

### Surface finish:

- (1-2) Satin.
- (3-4) Smooth.

### Colour:

- (1-2) Black (RAL 9011).
- (3-4) Galvanising standard.

### Key (optional):

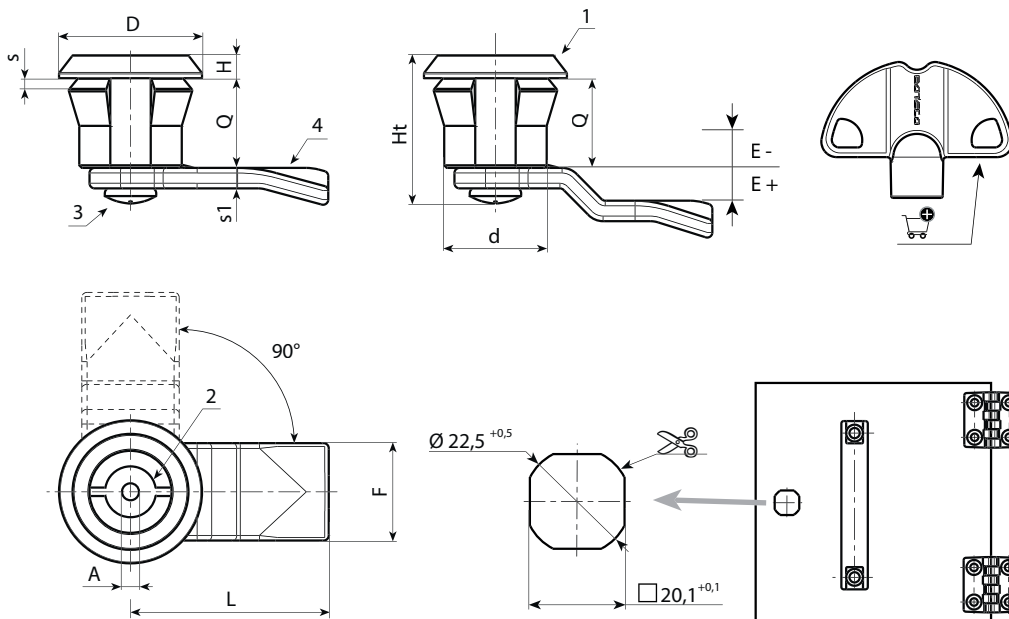
Red polyamide key (PA6), art. J090.  
ATTENTION: The key is not supplied. To be ordered separately. [page 399].

### Rotation:

90°.

### Special Requests:

- Upon request the key can be supplied with the lock. Add letter C at the end of the main code.



Code	Art.	A	d	D	L	Q	E	F	Ht	H	S(max.)	s1	🔑	Key
-	J12220.T03E0-4X4501	3	20	28	45	18	-4	19	30	4	1-2	4	-	J09050.TP0316
-	J12220.T03E-2X4501	3	20	28	45	18	-2	19	30	4	1-2	4	-	J09050.TP0316
-	J12220.T03E00X4501	3	20	28	45	18	0	19	30	4	1-2	4	-	J09050.TP0316
-	J12220.T03E02X4501	3	20	28	45	18	2	19	30	4	1-2	4	-	J09050.TP0316
-	J12220.T03E04X4501	3	20	28	45	18	4	19	30	4	1-2	4	-	J09050.TP0316
-	J12220.T03E06X4501	3	20	28	45	18	6	19	30	4	1-2	4	-	J09050.TP0316
-	J12220.T03E08X4501	3	20	28	45	18	8	19	30	4	1-2	4	-	J09050.TP0316
-	J12220.T03E10X4501	3	20	28	45	18	10	19	30	4	1-2	4	-	J09050.TP0316
-	J12220.T03E12X4501	3	20	28	45	18	12	19	30	4	1-2	4	-	J09050.TP0316

# J090

**NEW**

+80°  
-20°

PA6

UL94  
HB

RoHS  
COMPLIANT

## RED PLASTIC KEY FOR QUARTER TURN CAM LOCKS

### Materials:

Reinforced polyamide.  
Resistant to oils and greases.

### Surface finish:

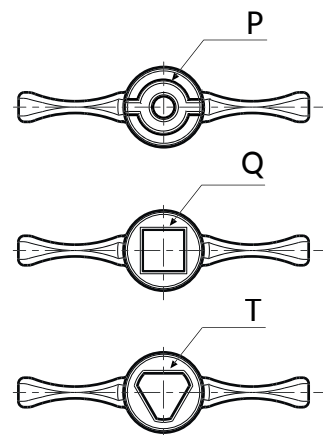
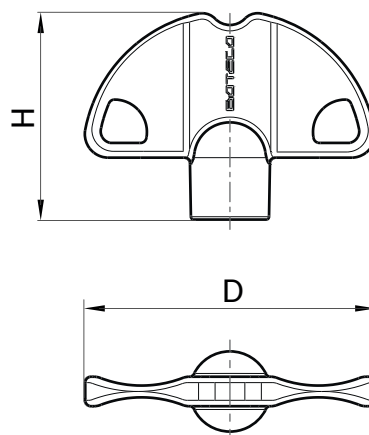
Satin.

### Colour:

Red: (RAL 3000 code 16).

### Special Requests:

- The key can be supplied with a 200 mm retaining chain.



Code	Art.	D	H	Design	g
J09050.0001	J09050.TP0316	49	35	P - 3	10
J09050.0002	J09050.TP0516	49	35	P - 5	10
J09050.0003	J09050.TQ0816	49	35	Q - 8	10
J09050.0005	J09050.TT0616	49	35	T - 6.5	10
J09050.0004	J09050.TT0816	49	35	T - 8	10

# J130

## UNIVERSAL LOCK WITH KNOB



### Materials:

- (1) Die-cast zamak lock body M19 (stator), rotor and knob.
- (2) Elastic washer d. 24x1 with bore d. 19.4.
- (3) Galvanised steel hexagon lock nut M19x1.
- (4) Galvanised steel locking lever. (Qn design N flat - Qe design E bent outwards).
- (5) Conical steel elastic washer d. 12x1.5.
- (6) Galvanised steel Phillips dome head screw M5x8.

### Surface finish:

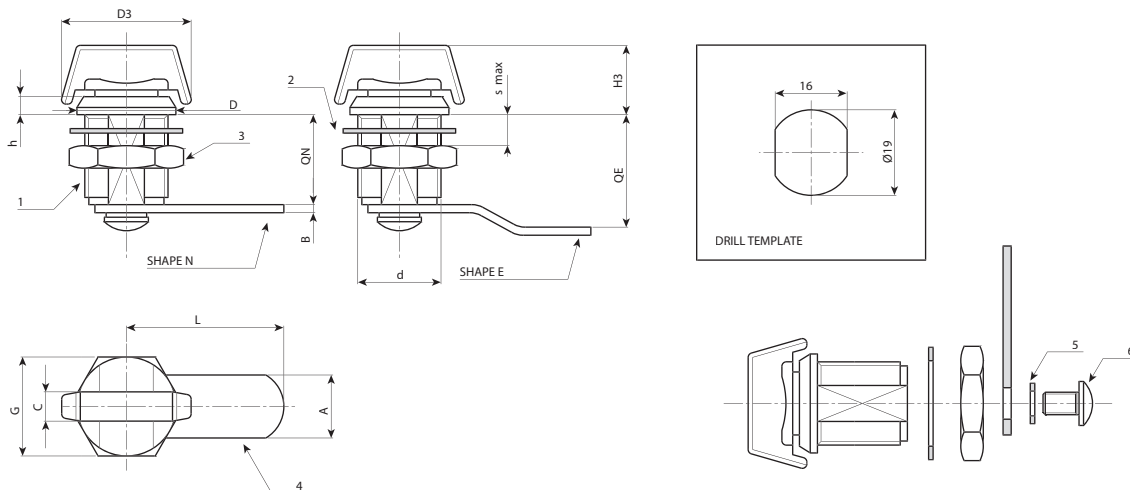
- (1) Nickel-plated.
- (2-5) Black oxide treated.
- (3-4-6) Standard blue galvanising.

### Rotation:

90°.

### Special Requests:

- None.



Code	Art.	A	d	D	L1	L	Q	E	F	G	H1	Ht	H	s(max.)	s1	
J130019.0004	J130019.ZN30X20	6.5	M19	22	29,5	30	20	0	14	22	15	31	4	6	2.5	57
J130019.0001	J130019.ZE30X25	6.5	M19	22	29,5	30	20	5	14	22	15	31	4	6	2.5	60

## UNIVERSAL QUARTER TURN ZAMAK CAM LOCK, M19 THREAD WITH KNOB AND HOLE FOR PADLOCK

**Materials:**

- (1-4) Die-cast zamak lock body M19 (stator), rotor and knob.
- (2) Zamak locking pawl. If pressed, the lock rotates idle. It is possible to insert the bow of a padlock (maximum diameter: 7.5 mm).
- (3) Steel cam (E=0 straight, E=2, 7 formed out, E=-2 formed in).
- (5) Brass hexagon lock nut M19x1.
- (6) Steel locking fork. To be inserted into the special groove to secure the lock to the panel.
- (7) Anti-rotation split washer in black-oxide treated steel.

**Surface finish:**

Smooth.

**Colour:**

- (1) Chromed.
- (3-4-6) Galvanised.

**Rotation:**

**J131-O:**

90° with clockwise closing movement.

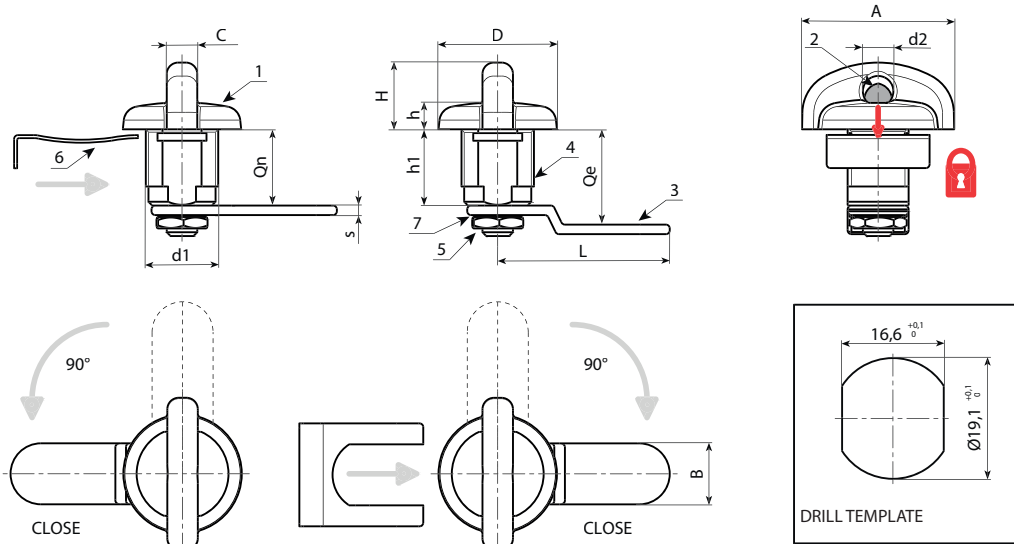
**J131-A:**

90° with counterclockwise closing movement.



**Special Requests:**

- **Cams available for the locks with E=0:**
- L=30 (J131019.ZN30X200 - J131019.ZN30X20A),
- L=41 (J131019.ZN41X200 - J131019.ZN41X20A),
- **Cams available for the locks with E=2:**
- L=45 (J131019.ZE45X220 - J131019.ZE45X22A),
- **Cams available for the locks with E=7:**
- L=41 (J131019.ZE41X270 - J131019.ZE41X27A),



Version J131-O: with clockwise rotation.

Code	Art.	A	d	d2	D	L1	L	Q	E	F	G	H1	Ht	H	s	s1	g
J131019.0004	J131019.ZN45X200	8	M19	8	31,5	40	45	20	0	16	20,5	18	29	7	2	2,5	90
J131019.0002	J131019.ZE41X250	8	M19	8	31,5	40	45	20	5	16	20,5	18	29	7	2	2,5	95

Version J131-A: with counterclockwise rotation.

Code	Art.	A	d	d2	D	L1	L	Q	E	F	G	H1	Ht	H	s	s1	g
J131019.0003	J131019.ZN45X20A	8	M19	8	31,5	40	45	20	0	16	20,5	18	29	7	2	2,5	90
J131019.0001	J131019.ZE41X25A	8	M19	8	31,5	40	45	20	5	16	20,5	18	29	7	2	2,5	95

## UNIVERSAL LOCK FOR TRIANGULAR INSERT KEY

### Materials:

- (1) Die-cast zamak lock body M19 (stator) and rotor. 6 mm triangular insert key.
- (2) Elastic washer d. 24x1 with bore d. 19.4.
- (3) Steel hexagon lock nut M19x1.
- (4) Steel locking lever (Qn design N flat - Qe design E bent outwards).
- (5) Conical steel elastic washer d. 12x1.5.
- (6) Steel Phillips dome head screw M5x8.

### Surface finish:

- (1) Nickel-plated.
- (2-5) Black oxide treated.
- (3-4-6) Standard blue galvanising.

### Key (optional):

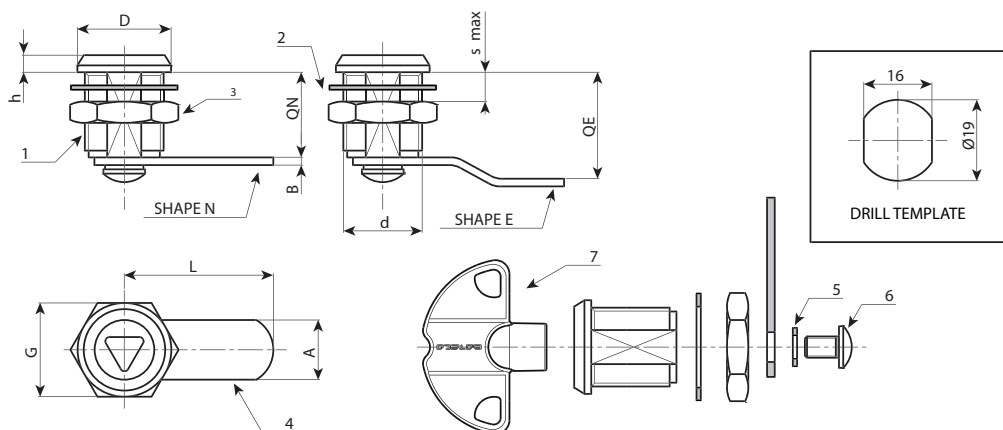
- (7) Red plastic key art. J090.
- ATTENTION: The key is not supplied. To be ordered separately.

### Rotation:

90°.

### Special Requests:

- None.



New product version: with 6.5 mm triangle

Code	Art.	A	d	D	L	Q	E	F	G	Ht	H	S(max.)	s1	⚙	Key
J14019.0001	J14019.Z06E00X38L	6,5	M19	22	38	20	0	16	22	31	4	6	2.5	50	J09050.0005
J14019.0002	J14019.Z06E02X38L	6,5	M19	22	38	20	2	16	22	31	4	6	2.5	50	J09050.0005
J14019.0003	J14019.Z06E05X35L	6,5	M19	22	35	20	5	16	22	31	4	6	2.5	50	J09050.0005
J14019.0004	J14019.Z06E09X35L	6,5	M19	22	35	20	9	16	22	31	4	6	2.5	50	J09050.0005

New product version: with 8 mm triangle

Code	Art.	A	d	D	L	Q	E	F	G	Ht	H	S(max.)	s1	⚙	Key
J14019.0005	J14019.Z08E00X38L	8	M19	22	38	20	0	16	22	31	4	6	2.5	50	J09050.0004
J14019.0006	J14019.Z08E02X38L	8	M19	22	38	20	2	16	22	31	4	6	2.5	50	J09050.0004
J14019.0007	J14019.Z08E05X35L	8	M19	22	35	20	5	16	22	31	4	6	2.5	50	J09050.0004
J14019.0008	J14019.Z08E09X35L	8	M19	22	35	20	9	16	22	31	4	6	2.5	50	J09050.0004

## UNIVERSAL LOCK FOR 3 MM WINGED TUBE KEY

**Materials:**

- (1) Die-cast zamak lock body M19 (stator) and rotor. 3 mm winged tubular key.
- (2) Elastic washer d. 24x1 with bore d. 19.4.
- (3) Steel hexagon lock nut M19x1.
- (4) Steel locking lever. (Qn design N flat - Qe design E bent outwards).
- (5) Conical steel elastic washer d. 12x1.5.
- (6) Steel Phillips dome head screw M5x8.

**Surface finish:**

- (1) Nickel-plated.
- (2-5) Black oxide treated.
- (3-4-6) Standard blue galvanising.

**Key (optional):**

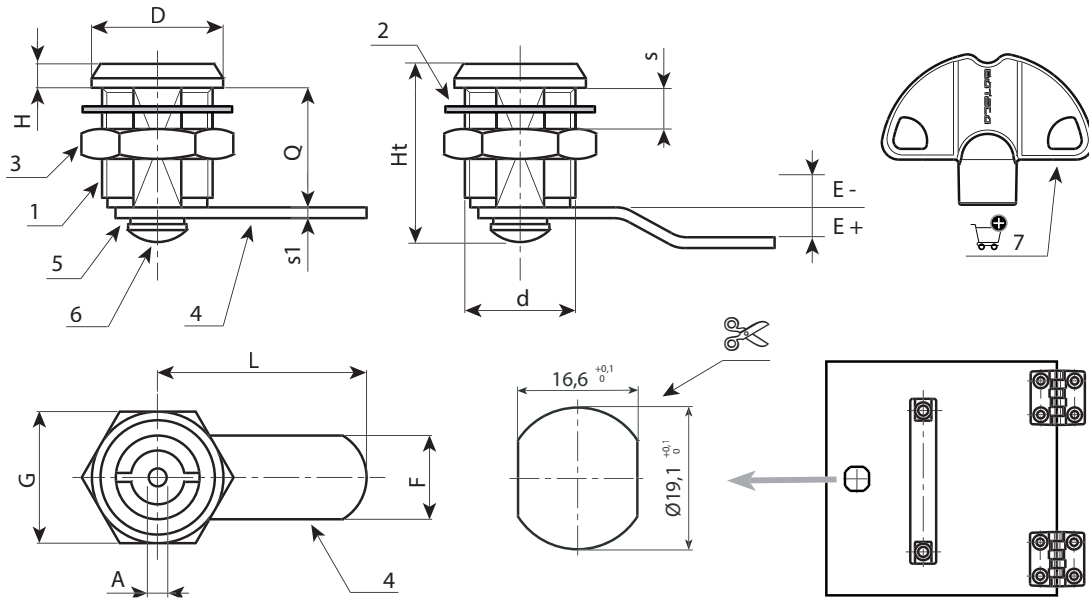
- (7) Red plastic key, Art. J09050.TP0316
- ATTENTION: The key is not supplied. To be ordered separately.

**Rotation:**

90°.

**Special Requests:**

- None.



New product version

Code	Art.	A	d	D	L	Q	E	F	G	Ht	H	S(max.)	s1	🔑	Key
J14219.0001	J14219.Z03E00X38L	3	M19	22	38	20	0	16	22	31	4	6	2,5	-	J09050.TP0316
J14219.0002	J14219.Z03E02X38L	3	M19	22	38	20	2	16	22	31	4	6	2,5	-	J09050.TP0316
J14219.0003	J14219.Z03E05X35L	3	M19	22	35	20	5	16	22	31	4	6	2,5	-	J09050.TP0316
J14219.0004	J14219.Z03E09X35L	3	M19	22	35	20	9	16	22	31	4	6	2,5	-	J09050.TP0316



## UNIVERSAL LOCK FOR 7 MM SQUARE INSERT KEY

### Materials:

- (1) Die-cast zamak lock body M19 (stator) and rotor. 7 mm square insert key.
- (2) Elastic washer d. 24x1 with bore d. 19.4.
- (3) Steel hexagon lock nut M19x1.
- (4) Steel locking lever. (Qn design N flat - Qe design E bent outwards).
- (5) Conical steel elastic washer d. 12x1.5.
- (6) Steel Phillips dome head screw M5x8.

### Surface finish:

- (1) Nickel-plated.
- (2-5) Black oxide treated.
- (3-4-6) Standard blue galvanising.

### Key (optional):

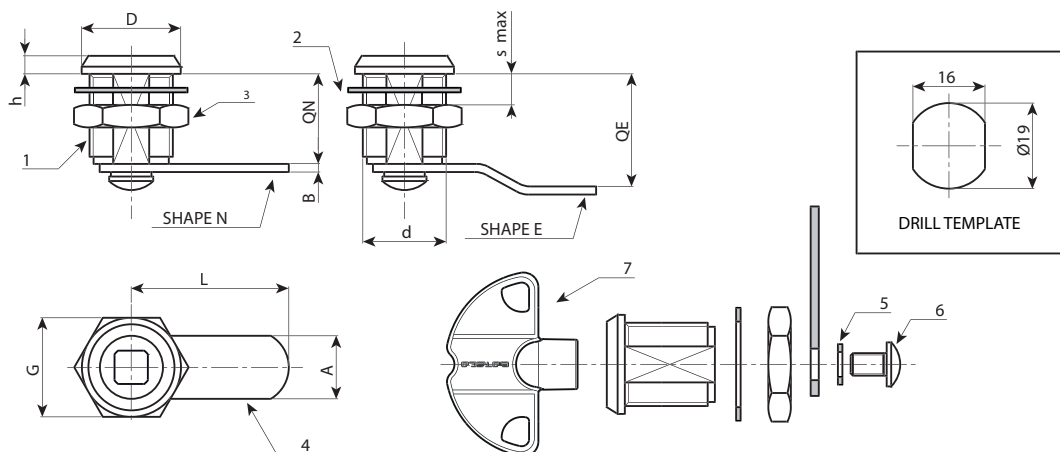
- (7) Red plastic key. Art. J09050.TQ0816.
- ATTENTION: The key is not supplied. To be ordered separately.

### Rotation:

90°.

### Special Requests:

- None.



### New product version

Code	Art.	A	d	D	L	Q	E	F	G	Ht	H	s(max.)	s1		Key
J14419.0001	J14419.Z07E00X38L	7	M19	22	38	20	0	16	22	31	4	6	2,5	-	J09050.TQ0816
J14419.0002	J14419.Z07E02X38L	7	M19	22	38	20	2	16	22	31	4	6	2,5	-	J09050.TQ0816
J14419.0003	J14419.Z07E05X35L	7	M19	22	35	20	5	16	22	31	4	6	2,5	-	J09050.TQ0816
J14419.0004	J14419.Z07E09X35L	7	M19	22	35	20	9	16	22	31	4	6	2,5	-	J09050.TQ0816



# J180

## ADJUSTABLE STEEL TOGGLE LATCH



### Materials:

#### J180:

Adjustable toggle latch made of sheared galvanised steel.

#### J180CIN:

Adjustable toggle latch made of sheared stainless steel (Aisi 304).

### Surface finish:

Glossy.

### Colour:

#### J180:

Standard blue galvanising.

#### J180CIN:

Natural.

### ATTENTION:

The catch plate must be ordered separately from the toggle latch.

### Special Requests:

- None.

### COMBINABLE CATCH PLATES:

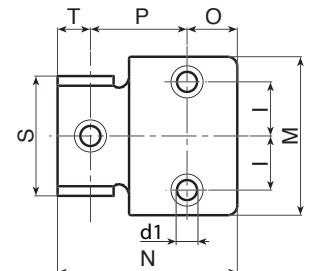
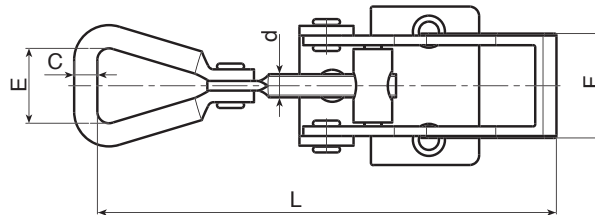
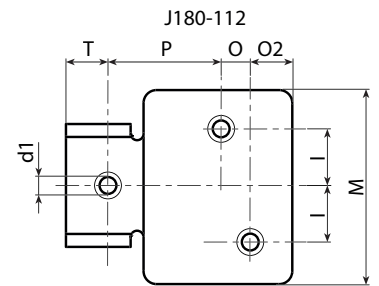
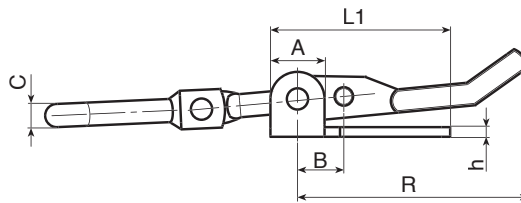
Article J180048 combinable with catch plates: J183048-J184048

Article J180065 combinable with catch plates: J183065-

J184065-J185065

Article J180112 combinable with catch plates: J183065-

J184065-J185065



Version J180: Galvanised steel version.

Code	art.	R	L	L1/N	A	B	C	d	d1	E	F	h	I	M	O	O2	P	T	S	g
J180048.0001	J180048.FZ	48	66-75	35	10	11	4.3	M5	5.5	18	17	2	7.5	28	9	-	12	14	20	35
J180065.0001	J180065.FZ	65	104-124	46	14	12	6	M6	5.1	24	25	3	13	41	13.5	-	24.5	8	31	110
J180112.0001	J180112.FZ	112	160-175	70	20	14	7	M8	7.5	34	30	2.5	17.5	60	9	13	35	13	37	210

Version J180CIN: Stainless steel version (Aisi 304).

Code	art.	R	L	L1/N	A	B	C	d	d1	E	F	h	I	M	O	O2	P	T	S	g
J180048.0002	J180048.FZCIN	48	66-75	35	10	11	4.3	M5	5.5	18	17	2	7.5	28	9	-	12	14	20	35
J180065.0002	J180065.FZCIN	65	104-124	46	14	12	6	M6	5.1	24	25	3	13	41	13.5	-	24.5	8	31	110



# J182

## ADJUSTABLE STEEL TOGGLE LATCH WITH PADLOCK



C10

Aisi 304



### Materials:

#### J182:

Adjustable toggle latch made of shear steel with padlock hasp.

#### J182CIN:

Adjustable toggle latch made of shear stainless steel with padlock hasp (Aisi 304).

### Surface finish:

Glossy.

### Colour:

#### J182:

Standard blue galvanising.

#### J182CIN:

Natural.

### ATTENTION:

The catch plate must be ordered separately from the toggle latch.

### Special Requests:

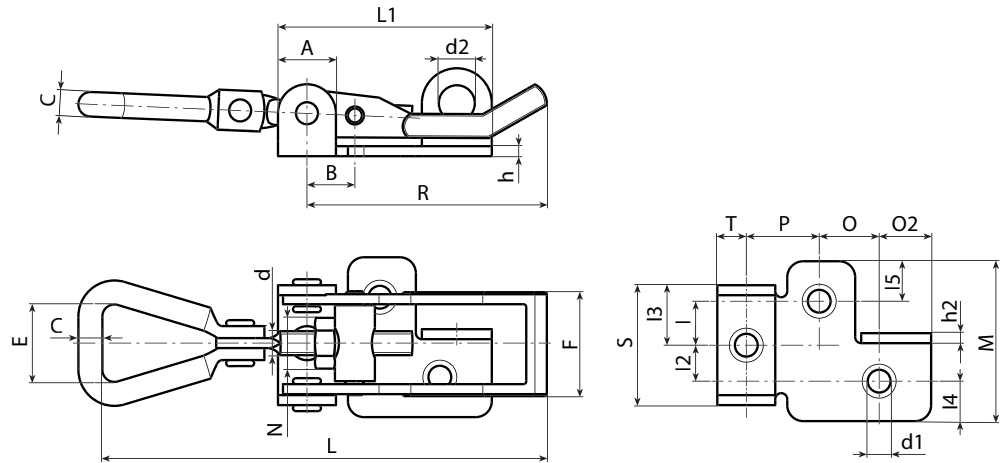
- None.

### COMBINABLE CATCH PLATES:

Article J182048 combinable with catch plates: J183048-J184048

Article J182065 combinable with catch plates: J183065-J184065-J185065

Article J182112 combinable with catch plates: J183065-J184065-J185065



### Version J182: Galvanised steel version.

Code	art.	R	L	L1	A	B	C	d	d1	d2	E	F	h	h2	I	I2	I3	I4	I5	M	O	O2	P	T	S		
J182048.0001	J182048.FZ	48	66-75	42.5	11	11	4.3	M5	5.3	7	17	17	2	2	7	7	10	6.5	6.5	27	11	9	11	11.5	20	43	
J182065.0001	J182065.FZ	65	104-124	53	14	12	5	M5	5.3	9.5	25	26	2.5	2.5	10	10	15	10	10	40	15	12	18	8	30	100	
J182112.0001	J182112.FZ	112	160-175	70	17	14	7	M6	7	9	31	30	3	3	17.5	16.5	19	13.5	12.5	60	22	13	22	13	38	216	

### Version J182CIN: Stainless steel version (Aisi 304).

Code	art.	R	L	L1	A	B	C	d	d1	d2	E	F	h	h2	I	I2	I3	I4	I5	M	O	O2	P	T	S		
J182048.0002	J182048.FZCIN	48	66-75	42.5	11	11	4.3	M5	5.3	7	17	18	2	2	7	7	10	6.5	6.5	27	11	9	11	11.5	20	43	
J182065.0002	J182065.FZCIN	65	104-124	53	14	12	5	M5	5.3	9.5	25	26	2.5	2.5	10	10	15	10	10	40	15	12	18	8	30	100	
J182112.0002	J182112.FZCIN	112	160-175	70	17	14	6.5	M6	7	9	31	30	3	3	18	18	18	60	22	13	22	13	38	216	-	-	

INOX



# J183



## STEEL CATCH PLATE FOR ADJUSTABLE TOGGLE LATCH

### Materials:

#### J183:

Drilled and sheared catch plate made of steel.

#### J183CIN:

Drilled and sheared catch plate made of stainless steel (Aisi 304).

### Surface finish:

Glossy.

### Colour:

#### J183:

Standard blue galvanising.

#### J183CIN:

Natural.

### ATTENTION:

The toggle latch must be ordered separately from the catch plate.

### Special Requests:

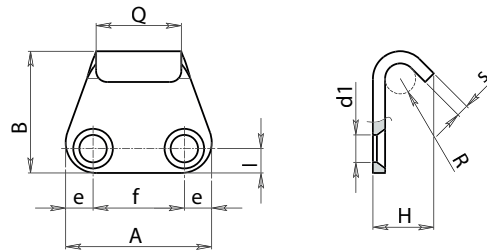
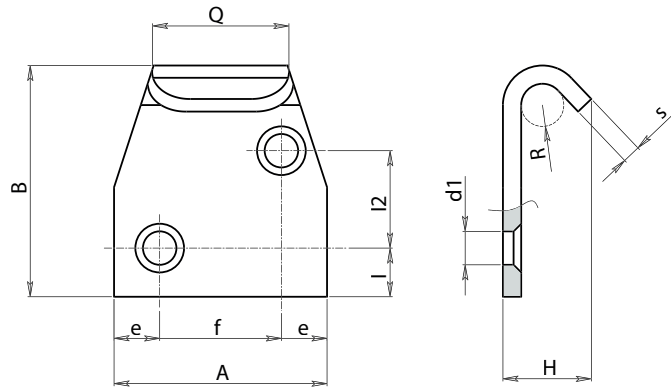
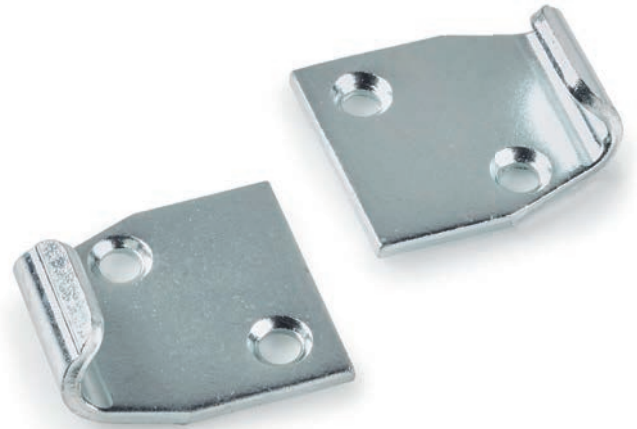
- None.

### COMBINABLE CATCH PLATES:

Catch plate J183048 combinable with toggle latches:

J180048-J182048.

Catch plate J183065 combinable with toggle latches: J180065-  
J182065-J180112-J182112.



### Version J183 - galvanised steel

Code	Art.	H	I	I2	A	B	Q	e	f	R	d1	s	
J183048.0001	J183048.FZ10	10	5	-	26	21	14	5.5	15	2.5	5.1	2	7
J183065.0001	J183065.FZ14	14,5	8.5	16	35	38,5	22	7.5	20	3.5	5,5	3	32

### Version J183CIN - stainless steel

Code	Art.	H	I	I2	A	B	Q	e	f	R	d1	s	
J183048.0002	J183048.FZ10CIN	10	5	-	26	21	14	5.5	15	2.5	5,1	2	7
J183065.0002	J183065.FZ14CIN	14,5	8.5	16	35	38,5	22	7.5	20	3.5	5,5	3	32



# J184



## STEEL CATCH PLATE FOR ADJUSTABLE TOGGLE LATCH

**Materials:**

Drilled and sheared catch plate made of steel.

**Surface finish:**

Glossy.

**Colour:**

Standard blue galvanising.

**ATTENTION:**

The toggle latch must be ordered separately from the catch plate.

**Special Requests:**

- None.

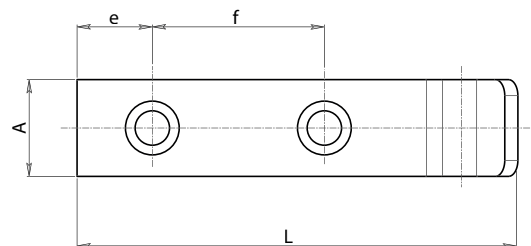
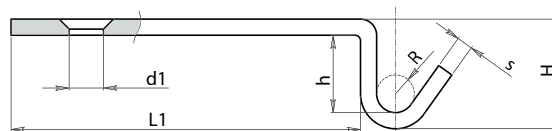
**COMBINABLE CATCH PLATES:**

Catch plate J184048 combinable with toggle latches:

J180048-J182048.

Catch plate J184065 combinable with toggle latches: J180065-

J182065-J180112-J182112.



Code	Art.	H	L	L1	h	A	e	f	R	d1	s	
J184048.0001	J184048.FZ09	9	40	29	5	16	7	14	2.5	5.1	2	7
J184065.0001	J184065.FZ21	21	82	65	16	18	14	32	3.5	6.5	3	31

# J185



## STEEL CATCH PLATE FOR ADJUSTABLE TOGGLE LATCH

### Materials:

#### J185:

Extended drilled catch plate made of sheared steel.

#### J185CIN:

Extended drilled catch plate made of sheared stainless steel (Aisi 304).

### Surface finish:

Glossy.

### Colour:

#### J185:

Standard blue galvanising.

#### J185CIN:

Natural.

### ATTENTION:

The toggle latch must be ordered separately from the catch plate.

### Special Requests:

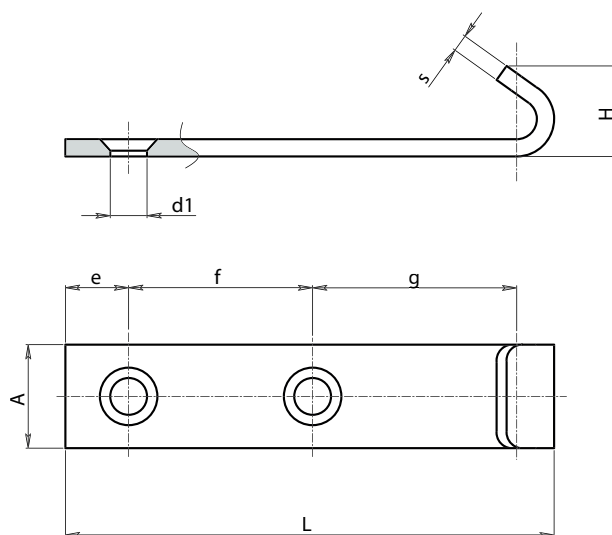
- None.

### COMBINABLE CATCH PLATES:

Catch plate J185065 combinable with toggle latches: J180065-J182065-J180112-J182112.



10



### Version J185 - galvanised steel

Code	Art.	H	L	A	e	f	d1	s	g
J185065.0001	J185065.FZ16	16.5	85	18	13.5	29	7	3	40

INOX

### Version J185CIN - stainless steel

Code	Art.	H	L	A	e	f	d1	s	g
J185065.0002	J185065.FZ16CIN	16.5	85	18	13.5	29	7	3	40



# J188

## LIGHT DUTY TOGGLE LATCH



### Materials:

- (1) Sheared and bent steel body.
- (2) Sheared and bent steel catch plate.
- (3) Moulded and threaded steel hook.
- (4) Stainless steel fixing rivets (Aisi 304).

### Surface finish:

Smooth.

### Colour:

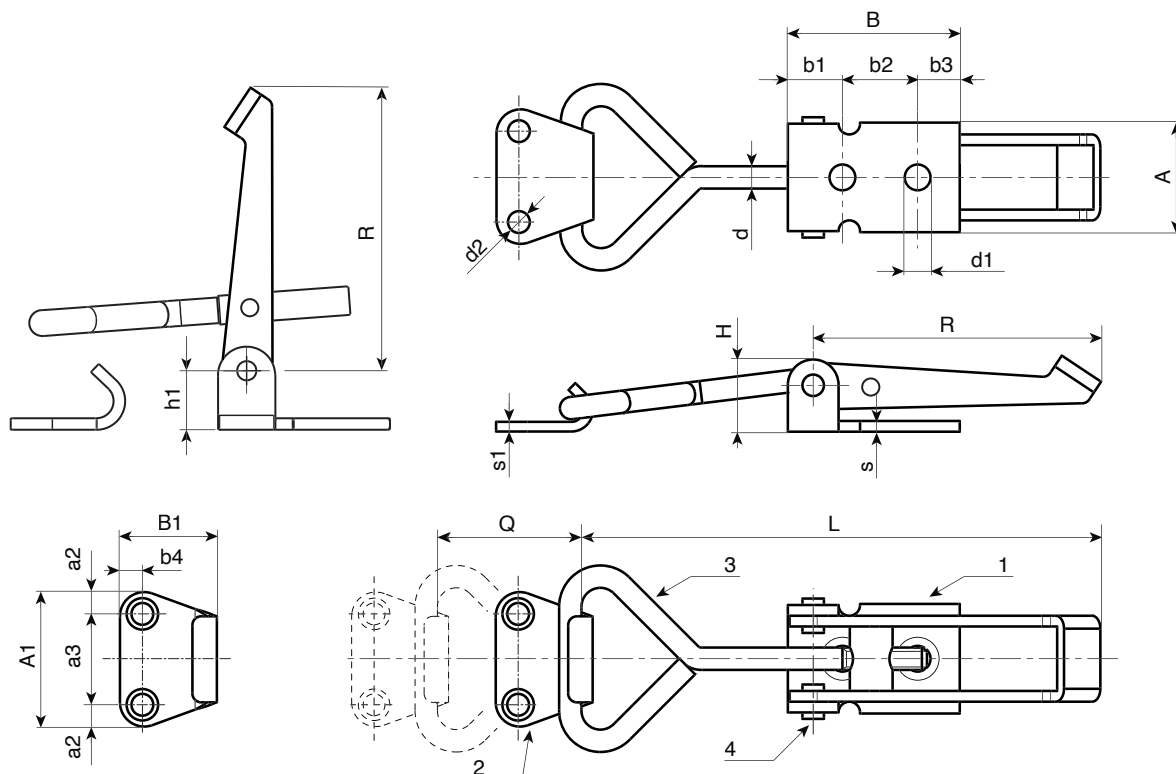
Natural.

### Packaging:

The article comes complete with the corresponding standard catch plate.

### Special Requests:

- Upon request and for special quantities the article can be supplied in stainless steel.



Code	art.	R	L	Q	H	A	B	A1	B1	b1	b2	b3	b4	a2	a3	h1	s	s1	d	d1	d2	
J188040.0001	J188040.FZ	50	73,5	0÷13	15	20,5	30	25	20	5,5	18	6,5	4,5	5,5	14	10	2	2	4,5	4,7	4,5	56
J188060.0001	J188060.FZ	69	98	0÷23	17	25,5	40	30	24	13	17,5	9,5	6	6,5	17	11	2,5	3	5	6	4,5	83

# J190

## REVERSE TOGGLE LATCH



C10



### Materials:

- (1) Sheared and bent steel body.
- (2) Sheared and bent steel catch plate.
- (3) Moulded and threaded steel hook.
- (4) Stainless steel fixing rivets (Aisi 304).

### Surface finish:

Smooth.

### Colour:

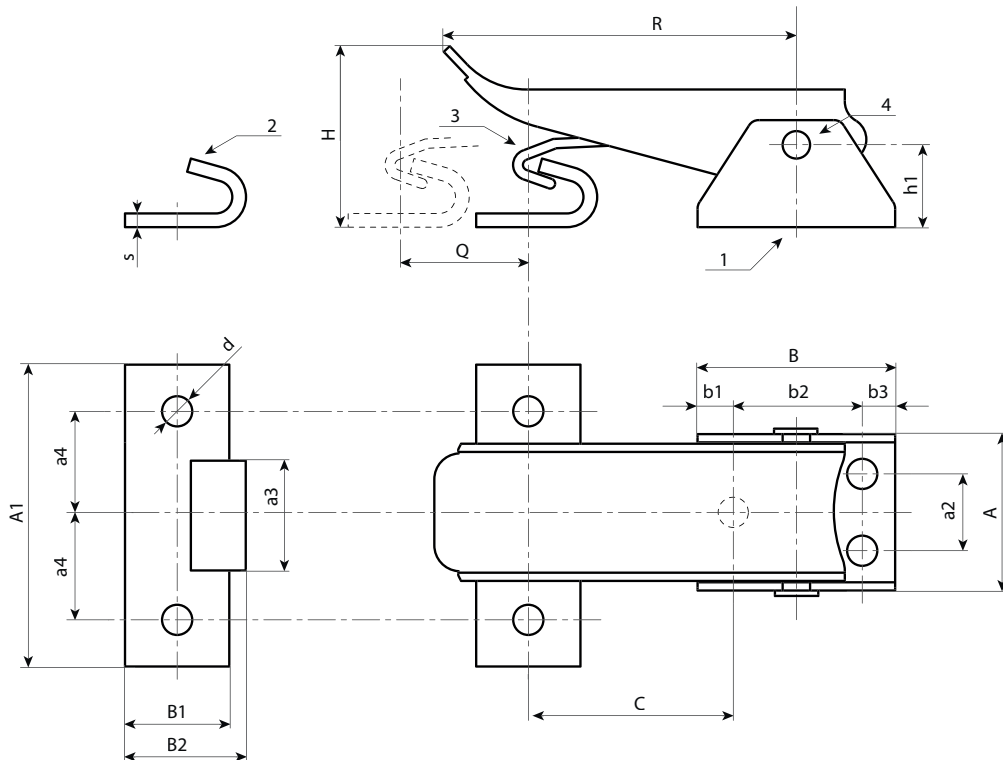
Natural.

### Packaging:

The article comes complete with the corresponding standard catch plate.

### Special Requests:

- Upon request and for special quantities the article can be supplied in stainless steel.



Code	art.	R	Q	H	C	h1	A	B	A1	B1	b1	b2	b3	a2	a3	a4	s	d	g	
J190036.0001	J190036.FZ	65,5	18	29	39÷57	16	28,5	35	55	17,5	5,5	24	5,5	14	20	20	2,5	5,5	115	9





# J250

## J-HOOK TOGGLE LATCH WITH CATCH PLATE



### Materials:

- (1) Technopolymer handle. Resistant to oils and greases.
- (2) Sheared and bent steel lever system.
- (3) Steel lock nut.
- (4) Stainless steel fixing rivets (Aisi 303).
- (5) Hardened steel hook.
- (6) Hardened and greased retainer bush.
- (7) Sheared and bent steel catch plate.

### Surface finish:

- (1) Light satin.
- (2-3-5-6-7) Smooth.

### Colour:

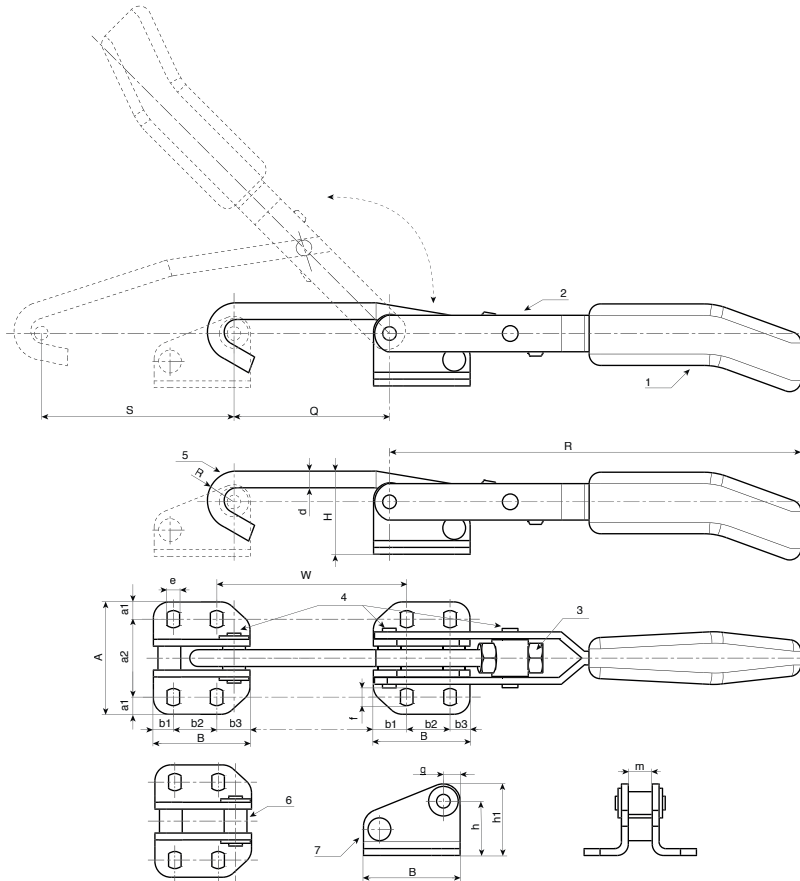
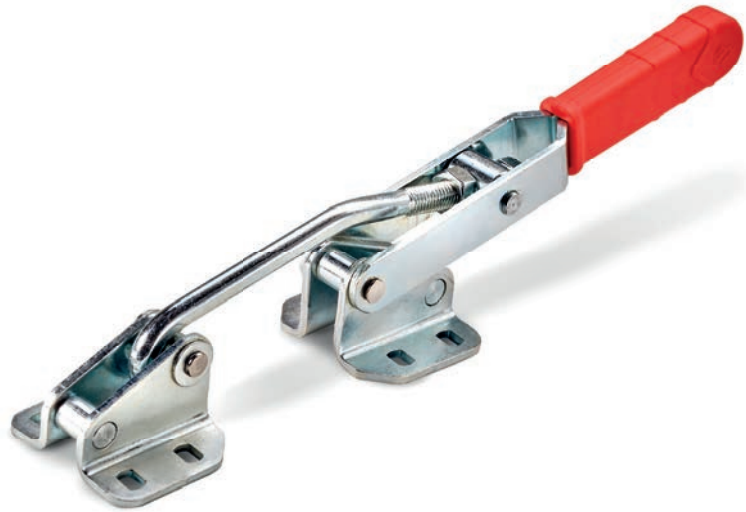
- (1) Two-tone (red and black).
- (2-3-5-6-7) Standard blue galvanising.

### Packaging:

The article comes complete with the corresponding standard catch plate.

### Special Requests:

- None.



Code	art.	F1 (kN)	R	H	S	Q	R	d	W	f
J250020.0001	J250020.FZ	2	97	40	40	30÷38	97	6	32÷41	6.5
J250030.0001	J250030.FZ	3	160	40	98	53÷63	160	6.5	71,5÷81	7.5
J250050.0001	J250050.FZ	5	236	70	144	59÷70	236	11	61÷70	14.5

Code	A	a2	B	b1	b2	b3	e	f	g	h	h1	m	g
J250020.0001	43	29	33	7	19	7	4.5	6.5	185	27.5	35	6.8	185
J250030.0001	43	34	42	14.5	19	8.5	5.5	7.5	410	23	31	10.8	410
J250050.0001	86	60	55	12.5	30	12.5	11	14.5	1260	49	60	13.8	1260



# J255



## NARROW J-HOOK TOGGLE LATCH WITH CATCH PLATE

### Materials:

- (1) Technopolymer handle. Resistant to oils and greases.
- (2) Sheared and bent steel lever system.
- (3) Steel lock nut.
- (4) Stainless steel fixing rivets (Aisi 303).
- (5) Hardened steel hook.
- (6) Hardened and greased retainer bush.
- (7) Sheared and bent steel catch plate.

### Surface finish:

- (1) Light satin.
- (2-3-5-6-7) Smooth.

### Colour:

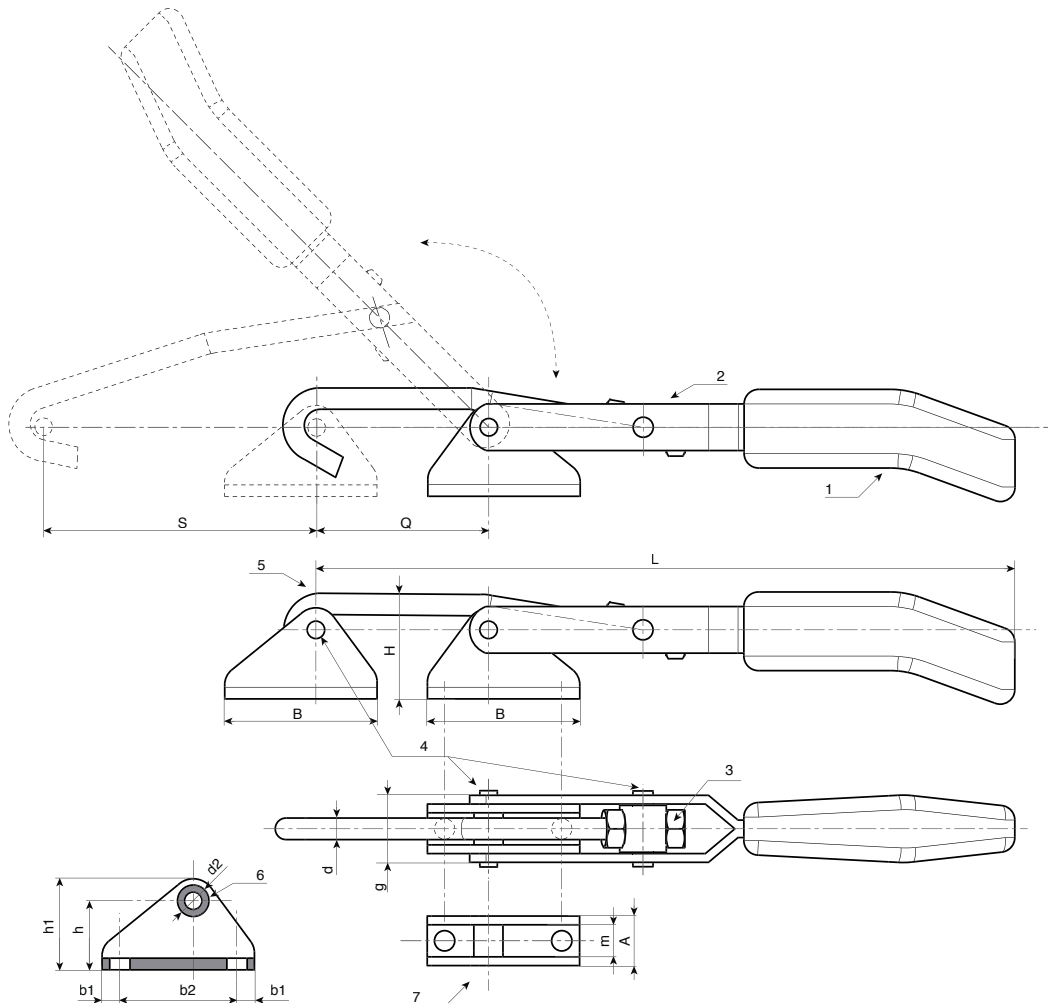
- Two-tone (red and black).
- (2-3-5-6-7) Standard blue galvanising.

### Packaging:

The article comes complete with the corresponding standard catch plate.

### Special Requests:

- None.



Code	art.	F1 (kN)	L	H	S	Q	d	d2	b2
J255030.0001	J255030.FZ	3	235÷247	36	93÷105	12	7	7	38
Code	A	B	b1	b2	g	h	h1	m	
J255030.0001	17	52	7	38	23	23	31	11	23



# J260

## LEVER TOGGLE LATCH



### Materials:

- (1) Technopolymer handle. Resistant to oils and greases.
- (3) Sheared and bent steel lever system.
- (4) Hardened steel U-shaped hook with threaded ends.
- (5) Steel lock nut.
- (6) Steel self-locking nut.
- (7) Sheared and bent catch plate made of hardened steel.
- (8) Hardened steel rotary retainer bush, greased.
- (9) Stainless steel fixing rivets (Aisi 303).

### Surface finish:

- (1) Light satin.
- (3-4-5-6-7-8-9) Smooth.

### Colour:

- (1) Two-tone (red and black).
- (3-4-5-6-7-8) Standard blue galvanising.
- (9) Natural.

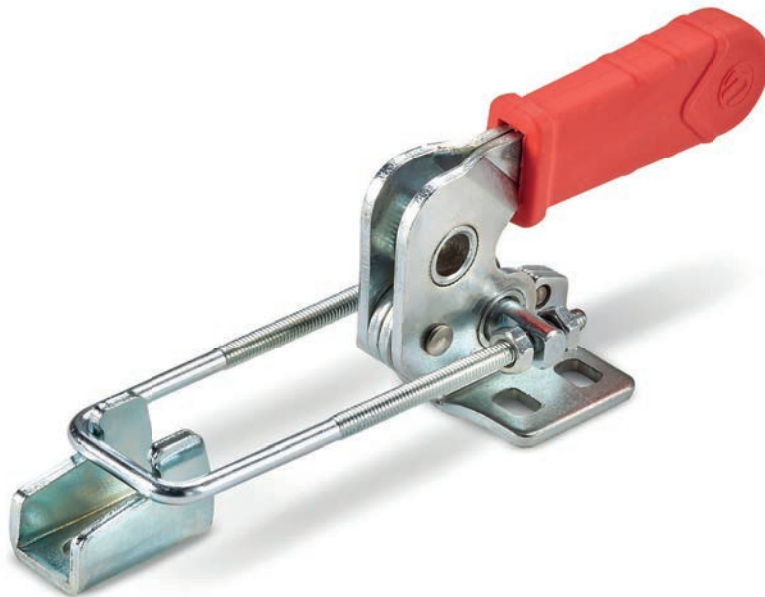
### Packaging:

The code includes the toggle latch and its catch plate. The catch plate can also be ordered separately with the following codes:

- J261010.FZ for toggle latch J260010.FZ
- J261014.FZ for toggle latch J260014.FZ
- J261025.FZ for toggle latch J260025.FZ
- J261045.FZ for toggle latch J260045.FZ

### Special Requests:

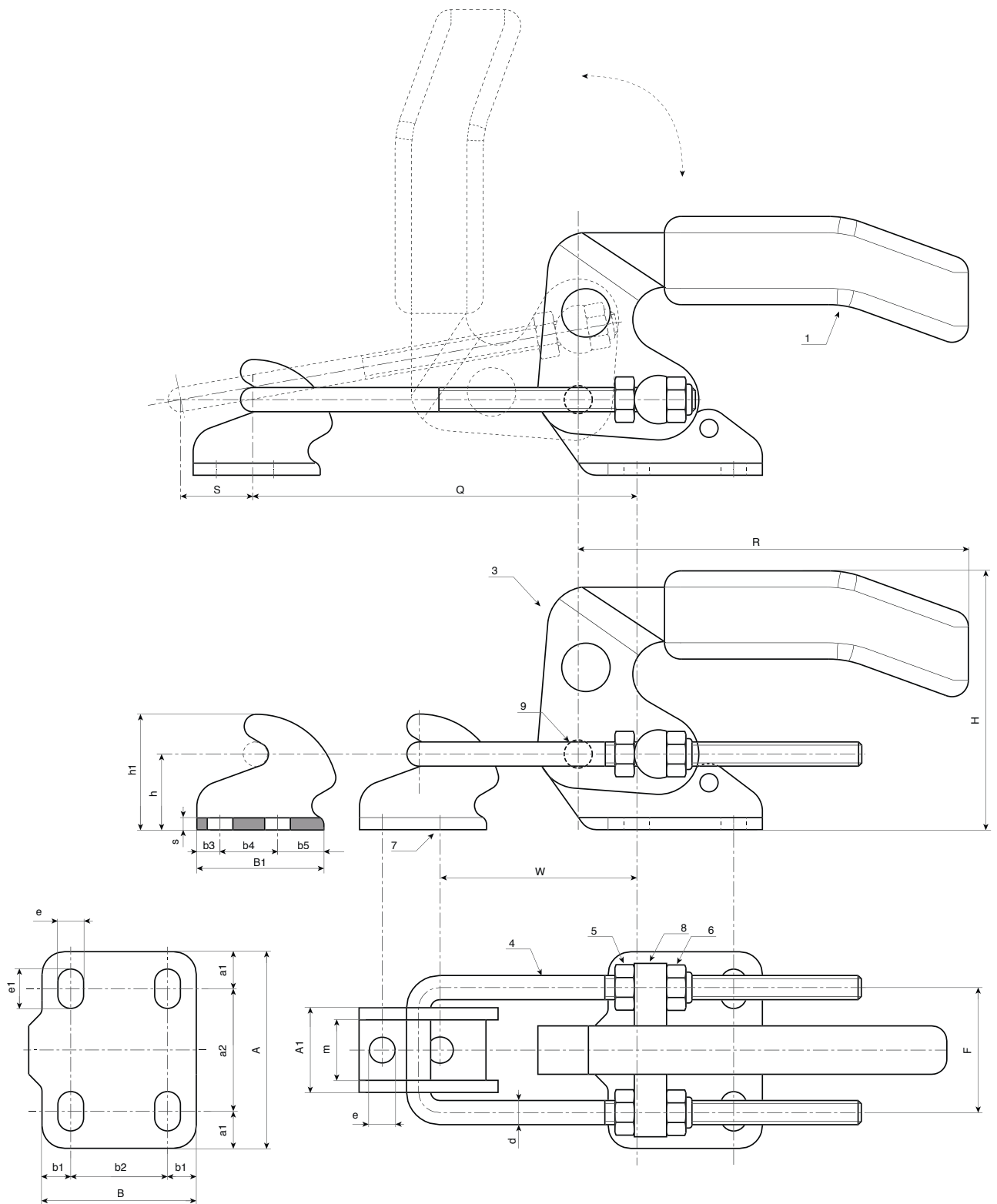
- Upon request and for special quantities the product can be supplied in stainless steel.



Code	Art.	F1 (kN)	R	H	S	Q	W	d	F	A	A1
J260010.0001	J260010.FZ	1	89	28	16	21÷65	14÷24	3.5	18.5	27	13.5
J260014.0001	J260014.FZ	14	83	49	11	48÷86	32÷70	3.5	24	38	16
J260025.0001	J260025.FZ	25	104	70	21	48,5÷95,5	43÷90	5	31	48	21
J260045.0001	J260045.FZ	45	124	84	28	66÷104	60÷116	7	41	64	28

# J260

## LEVER TOGGLE LATCH



Code	Art.	a1	a2	B	B1	b1	b2	b3	b4	b5	e	e1	h	h1	m	s	
J260010.0001	J260010.FZ	4.5	18	26	20	5	16	5	10	5	4.5	4.5	12	18	9	2	80
J260014.0001	J260014.FZ	8	22	26	26	6.25	13.5	7.75	10.5	7.75	5.2	7.5	12	20	11	2.5	150
J260025.0001	J260025.FZ	10	28	35	32	8	19	6	14	12	6.5	10	19	29	15	3	330
J260045.0001	J260045.FZ	12	40	51	40	9.5	32	8	19	13	8.5	13	25	39	20	4	750

# J265

## HEAVY DUTY LEVER TOGGLE LATCH



### Materials:

- (1) Thin plastic handle. Resistant to oils and greases.
- (2) Cast steel lever system and base.
- (3) Cast steel catch plate.
- (4) Hardened steel U-shaped hook with threaded ends.
- (5-6) Galvanised steel lock nuts.
- (7) Galvanised, hardened steel pivot pin. With lubricated guide bearing. Fixed with snap rings.
- (8) Galvanised, hardened steel rotary retainer bush. With lubricated guide bearing. Fixed with snap rings.
- (9) Stainless steel fixing rivets (Aisi 303).

### Surface finish:

- (1-4-5-6-7-8-9) Smooth.
- (2-3) Sandblasted satin finish.

### Colour:

- (1) Red.
- (2-3-4-5-6-7-8) Standard blue galvanising.
- (9) Natural.

### Packaging:

The code includes the toggle latch and its catch plate. The catch plate can also be ordered separately with the following codes: J266150.FZ for toggle latch J265150.FZ

### Special Requests:

- None.



Code	Art.	F1 (kN)	R	H	S	Q	F	A	A1	a1	a2
J265150.0001	J265150.FZ	15	168	94	50	81÷132	54	82	60	13	56

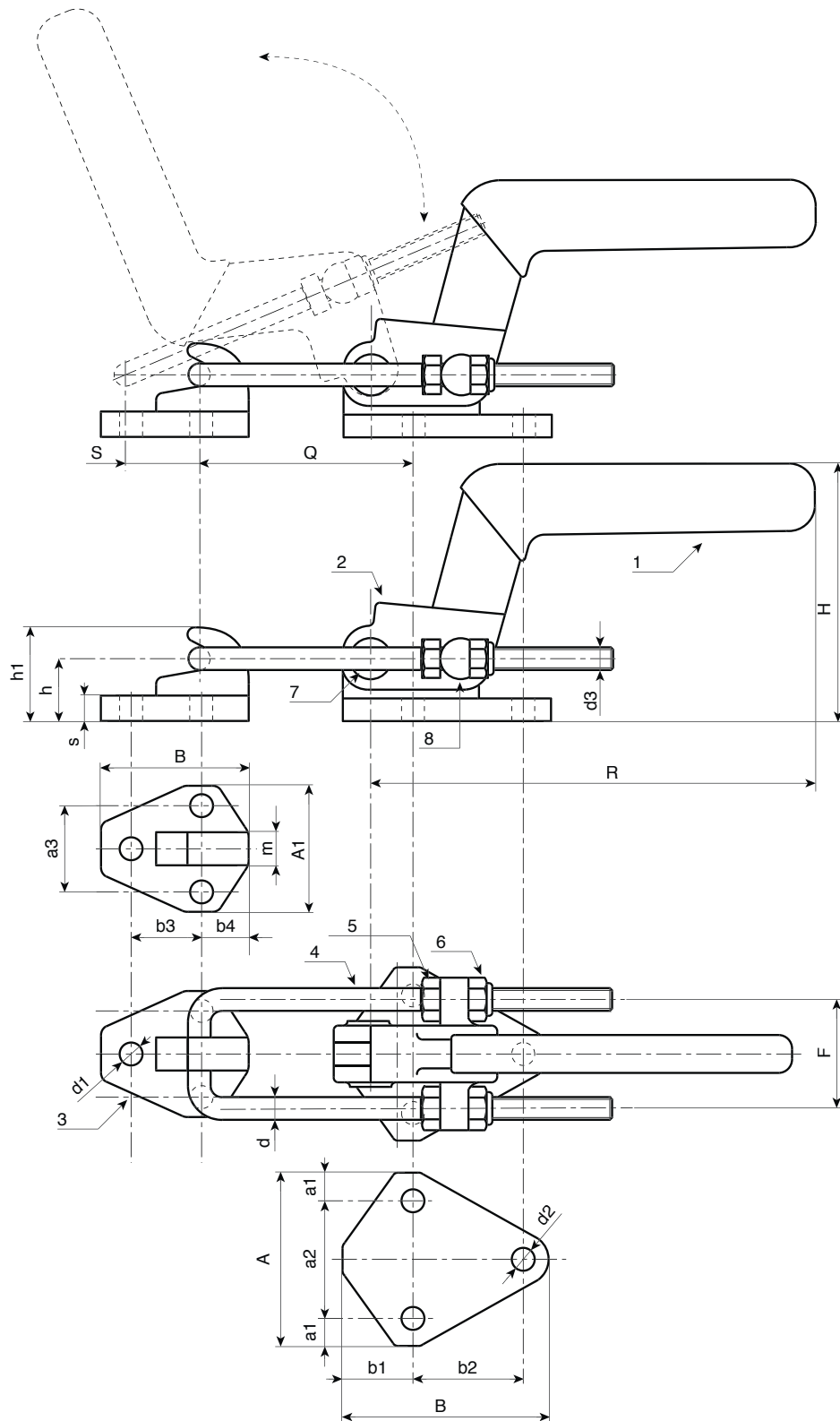
# J265

## HEAVY DUTY LEVER TOGGLE LATCH

+135°  
-30°

UL94  
HB

RoHS  
COMPLIANT



Code	Art.	a3	B	B1	d	d1	d2	d3	b1	b2	b3	b4	h	h1	m	s	
J265150.0001	J265150.FZ	42	98.5	70	9	10.5	10.5	M10	33.5	52.5	35	23	33	50	15.5	11	1800

# J300

## LOCKING BRACKET WITH THROUGH HOLE



**Materials:**

Reinforced polyamide.  
Resistant to oils and greases.

**Surface finish:**

Satin.

**Colour:**

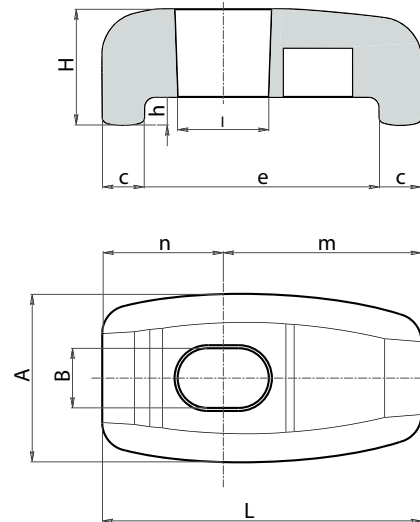
Black (RAL 9011).

**Hole**

Smooth through hole obtained by moulding the plastic.

**Special Requests:**

- None.



The use of the J300 bracket must be combined with a knob with a threaded stud. An effective combination could be the one with T-handle art. L271. Used together they function as a quick locking and release system for panels of machinery in general. Particularly suitable for insulating panels of large external air conditioning chiller units.

Code	Art.	A	L	H	B	l	c	e	h	n	m	
J30046.0001	J30046.TG08.501	24	45.5	16.5	8.5	13	6	33.5	4	17	28.5	15
J30068.0001	J30068.TG08.501	24	67.5	16.5	8.5	13	6	55.5	4	17.5	50	19



# J270



## SMALL HORIZONTAL STEEL TOGGLE CLAMP WITH BASE

### Materials:

- (1) Handle covered with thermoplastic rubber.
- (2) Free-cutting steel threaded stud.
- (3) TPV rubber pressure tip.
- (4) Steel lock nut (DIN 934).
- (5) Sheared and bent base and lever system in sheet metal (DD13).
- (6) Rotation pins and rivets in stainless steel (Aisi 304).
- (7) Sheared and bent washers in sheet metal (DD13).

### Surface finish:

Smooth.

### Colour:

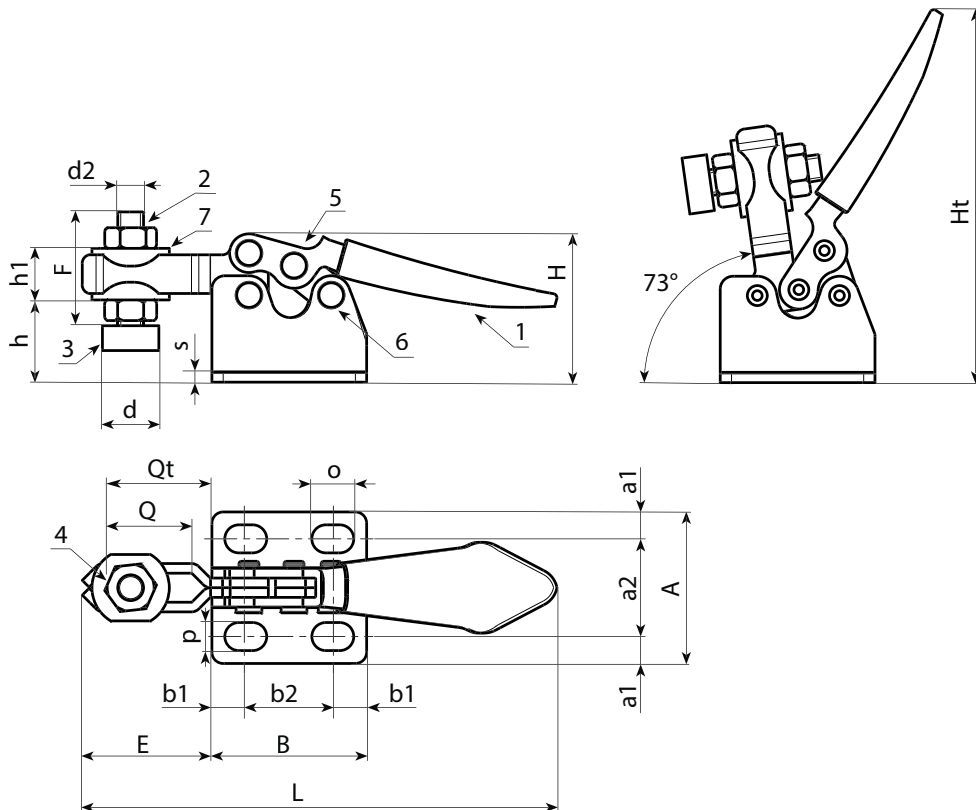
- (1) Yellow.
- (3) Red.
- (2-4-5-7) Standard blue galvanising.

### Special Requests:

- None.



10



Code	art.	h	L	A	B	E	F	H	Ht	Q	Qt	d	d2	o	p	a1	a2	b1	b2	h1	s	F1 (Kg)	
J270008.0001	J270008.FZ10	9	75	24	24,5	20	18	18	54	12	16	9	M4	6,5	4,5	4,3	15,5	5,5	13,5	6	1,5	40	26
J270014.0001	J270014.FZ10	9	75	24	24,5	20	18	24	60	12	16	9	M4	6,5	4,5	4,3	15,5	5,5	13,5	6	1,5	40	29

# J272



TPV

DD13

UL94  
HB



## HORIZONTAL STEEL TOGGLE CLAMP WITH BASE AND RUBBER HANDLE

### Materials:

- (1) TPV thermoplastic rubber handle. Hardness 75 Shore.
- (2) Free-cutting steel threaded stud.
- (3) Chloroprene rubber pressure tip. Hardness 75 shore.
- (4) Steel lock nut (DIN 934).
- (5) Sheared and bent base and lever system in sheet metal (DD13).
- (6) Rotation pins and fixing rivets in stainless steel (Aisi 303).
- (7) Bent washers in sheet metal (DD13).

### Surface finish:

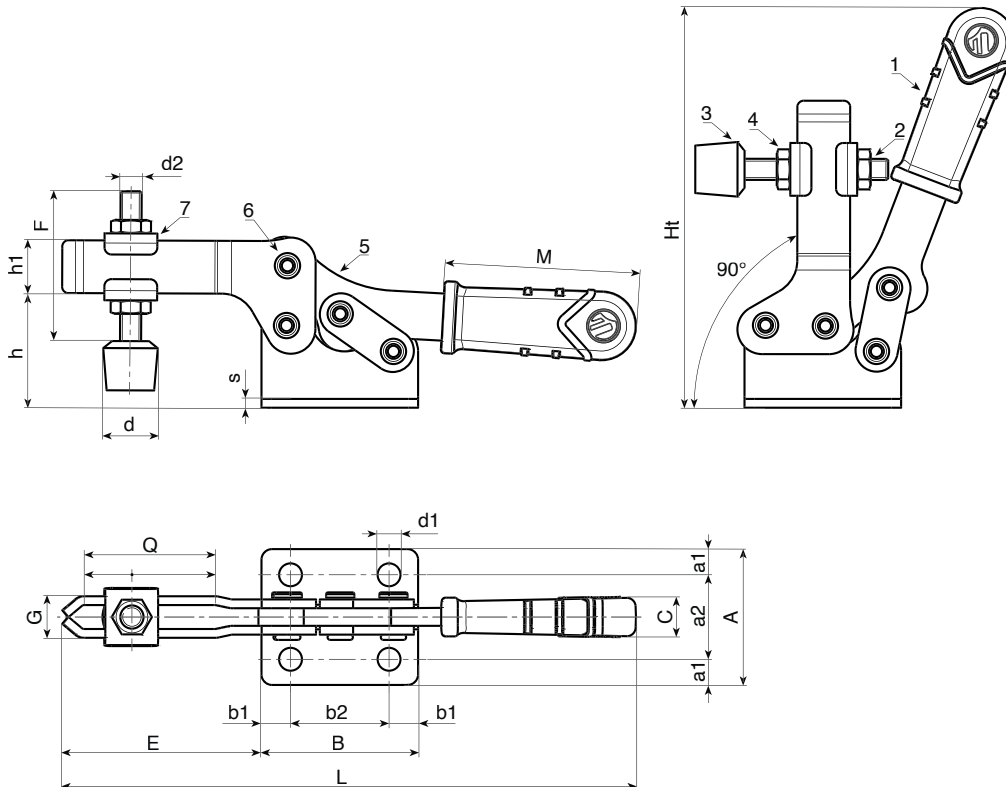
Smooth.

### Colour:

- (1) Red (RAL 3000).
- (3) Black (RAL 9011).
- (2-4-5-7) Standard blue galvanising.

### Special Requests:

- None.



Code	art.	F1 (Kg)	L	A	B	C	E	F	G	Ht	Q	M	d	d1	d2	a1	a2	b1	b2	h	h1	s	
J272010.0001	J272010.FZ16	100	120	25	29	12	42	32	12,5	86	20	40	15	4,5	M6	4	17	7,75	13,5	20,5	11	3	151
J272012.0001	J272012.FZ16	120	162	38	44	12	57	44	12	115	32	55	15	6,5	M6	7	24	8	28	32	15	2,5	220
J272020.0001	J272020.FZ16	200	190	43	58	12	68	54	14	135	30	65	20	6,5	M8	8	27	9	40	37	16	3	380
J272030.0001	J272030.FZ16	300	260	62	79	14,5	100	75	18	204	60	75	25	8,5	M10	11,5	39	11,5	56	51	23	4	840
J272035.0001	J272035.FZ16	350	288	62	79	14,5	118	75	18	204	77	75	25	8,5	M10	11,5	39	11,5	56	51	23	4	860



# J276

## VERTICAL STEEL TOGGLE CLAMP WITH BASE AND RUBBER HANDLE



### Materials:

- (1) TPV thermoplastic rubber handle. Hardness 75 Shore.
- (2) Free-cutting steel threaded stud.
- (3) Chloroprene rubber pressure tip. Hardness 75 shore.
- (4) Steel lock nut (DIN 934).
- (5) Sheared and bent base and lever system in sheet metal (DD13).
- (6) Rotation pins and fixing rivets in stainless steel (Aisi 303).
- (7) Bent washers in sheet metal (DD13).

### Surface finish:

Smooth.

### Colour:

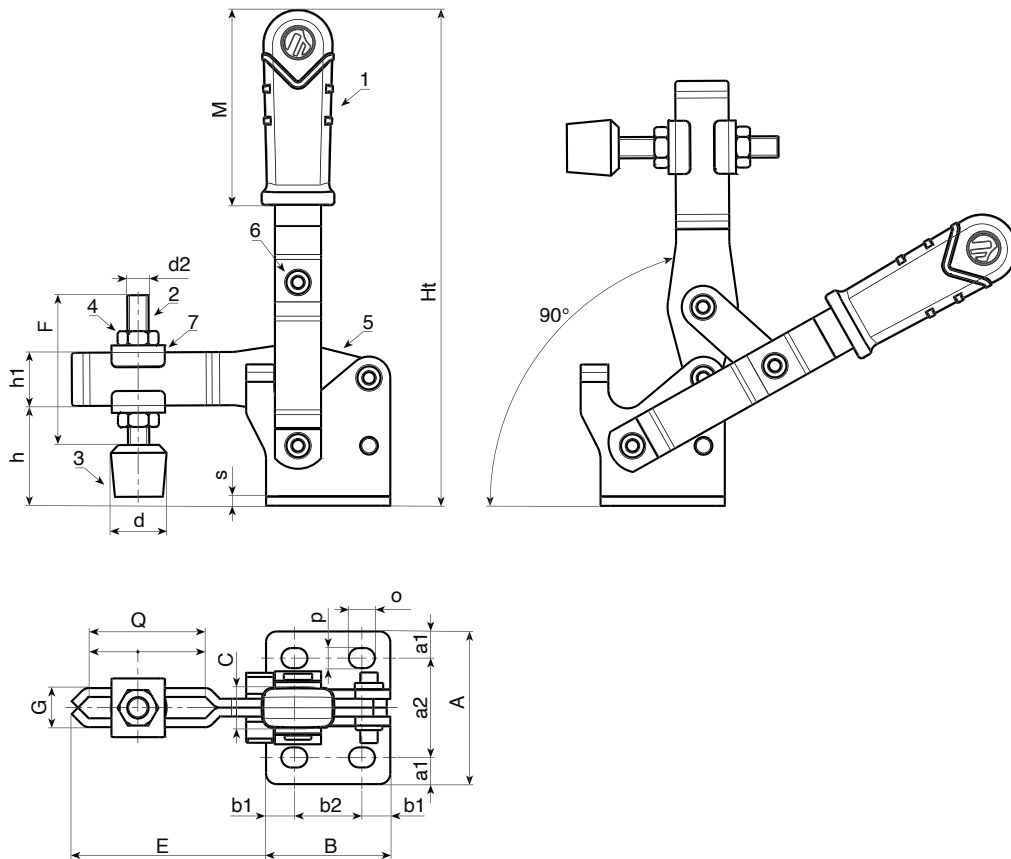
- (1) Red (RAL 3000).
- (3) Black (RAL 9011).
- (2-4-5-7) Standard blue galvanising.

### Special Requests:

- None.



10



Code	art.	F1 (Kg)	A	B	C	E	F	G	Ht	Q	M	d	d2	o	p	a1	a2	b1	b2	h	h1	s	g
J276009.0001	J276009.FZ16	90	40	25	12	42	32	12,5	101	20	40	15	M6	5,5	5,5	6,6	26,8	6,15	12,7	23	10	3	168
J276012.0001	J276012.FZ16	120	43	35	12	50	44	11	140	32	55	15	M6	5,5	5,5	7	29	8	19	28	15	2,5	247
J276020.0001	J276020.FZ16	200	45,5	43	12	64	54	14,5	165	35	65	20	M8	9	6,5	6,5	32	10,5	22	34	17,5	3	400
J276030.0001	J276030.FZ16	300	64,5	56,5	14,5	84	75	18	205	55	75	25	M10	10,5	8,5	9,3	46	13,8	29	43	20,5	3,5	790



# J278



## VERTICAL STEEL TOGGLE CLAMP WITH RUBBER HANDLE AND WITHOUT BASE

### Materials:

- (1) TPV thermoplastic rubber handle. Hardness 75 Shore.
- (2) Free-cutting steel threaded stud.
- (3) Chloroprene rubber pressure tip. Hardness 75 shore.
- (4) Steel lock nut (DIN 934).
- (5) Sheared and bent base and lever system in sheet metal (DD13).
- (6) Rotation pins and fixing rivets in stainless steel (Aisi 303).
- (7) Bent washers in sheet metal (DD13).

### Surface finish:

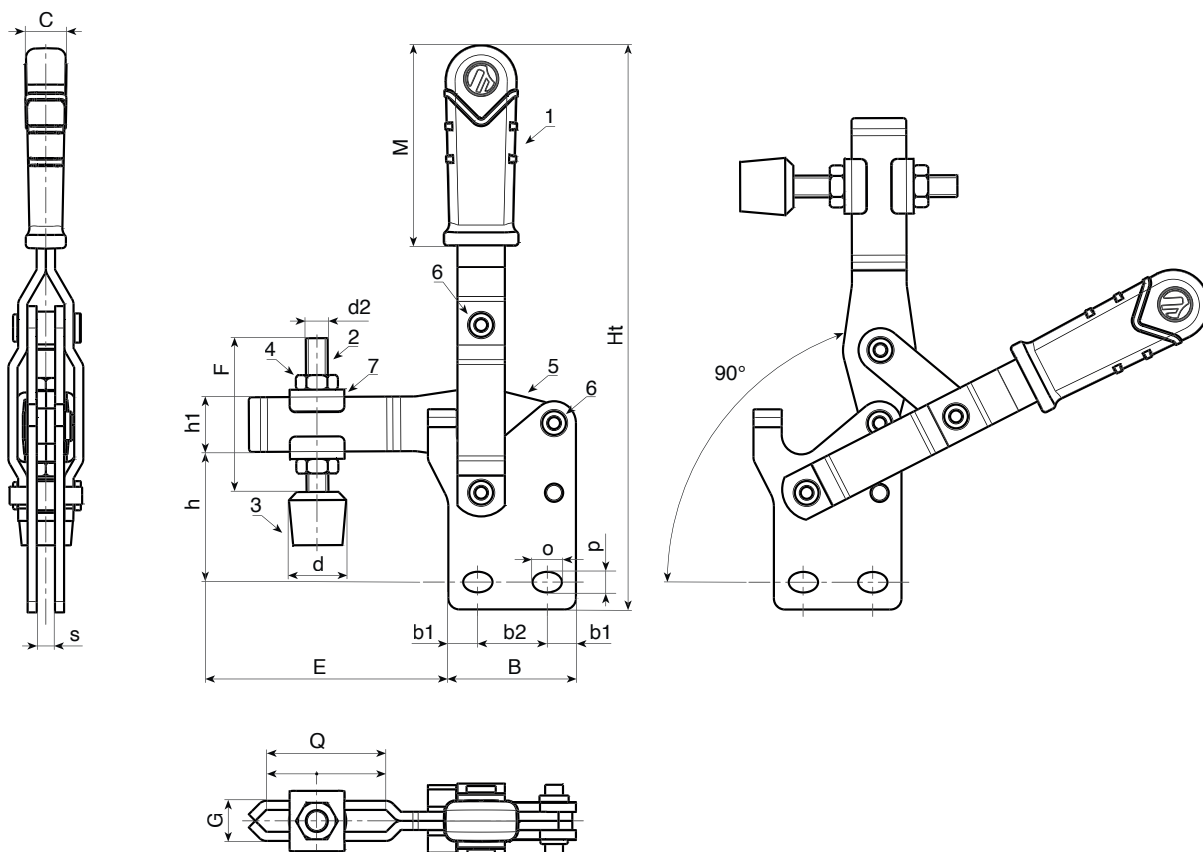
Smooth.

### Colour:

- (1) Red (RAL 3000).
- (3) Black (RAL 9011).
- (2-3-4-5-7) Standard blue galvanising.

### Special Requests:

- None.



Code	art.	F1 (Kg)	B	C	E	F	G	Ht	Q	M	d	d2	o	p	b1	b2	h	h1	s	
J278009.0001	J278009.FZ16	90	25,5	12	42	32	12,5	112	20	40	15	M6	5,3	5,3	6,4	12,7	29	10	6	167
J276012.0001	J276012.FZ16	125	35	12	50	44	11	155	32	55	15	M6	5,3	5,3	8	19	36	15	5	245
J278020.0001	J278020.FZ16	200	42,5	12	64	54	14,5	180	40	65	20	M8	9	6,5	10,25	22	42	17,8	6	401
J278030.0001	J278030.FZ16	300	56	14,5	83	75	18	225	60	75	25	M10	10,5	8,5	13,5	29	55	20,5	8	783



# J290



## LIGHT TOGGLE CLAMP WITH THRUST ROD AND RUBBER HANDLE

### Materials:

- (1) TPV thermoplastic rubber handle. Hardness 75 Shore.
- (2) Sheared and bent base and lever system in sheet metal (DD13).
- (3) Rotation pins and fixing rivets in stainless steel (Aisi 304).
- (4) Thrust rod with threaded hole in free-cutting steel.

### Surface finish:

Smooth.

### Colour:

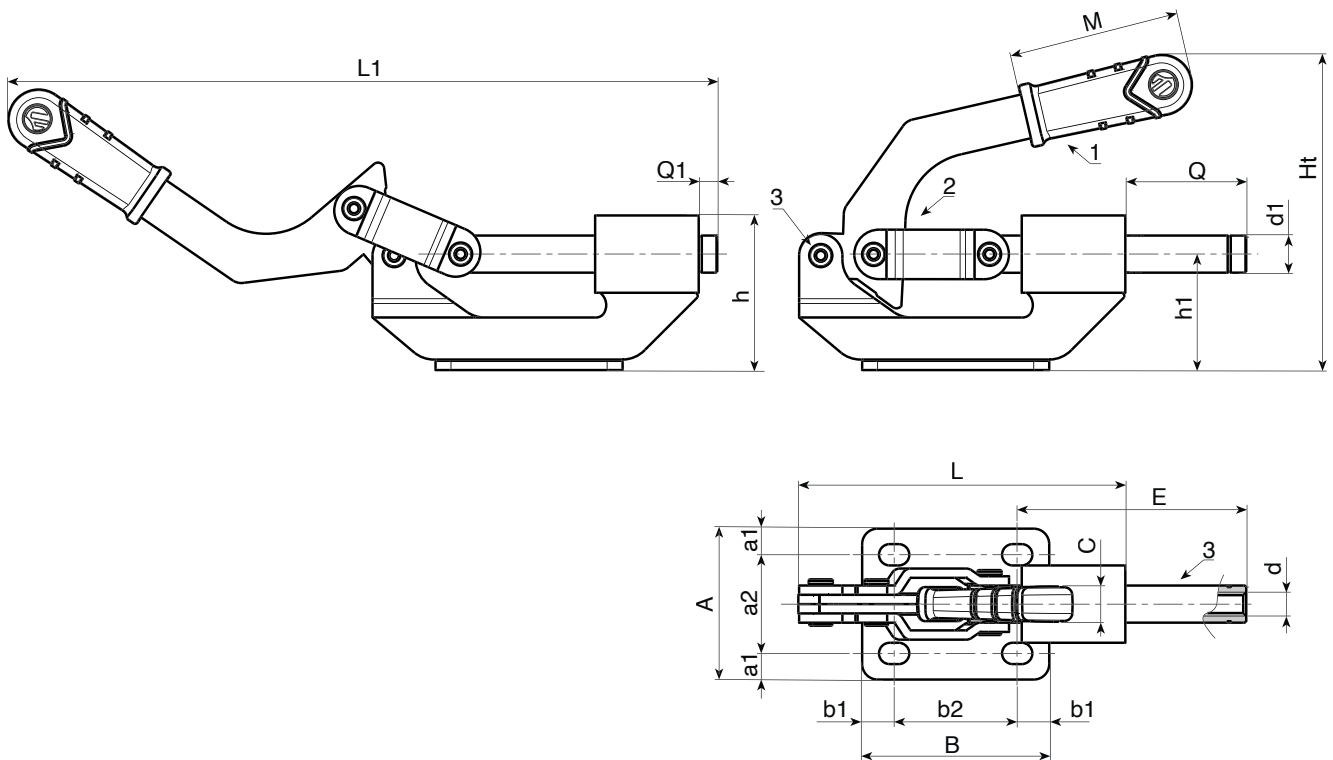
- (1) Red (RAL 3000).
- (4) Black-oxide treated.
- (2) Standard blue galvanising.

### Special Requests:

- None.



10



Code	art.	F1 (Kg)	L	L1	Ht	h	h1	A	B	C	E	M	Q	Q1	s	a1	a2	b1	b2	d	d1	o	p		
J290022.0001	J290022.FZ16	220	107	234	98	47	34	49	60	12,5	79	65	41	3	3	8,5	32	10	40	M8	12	10	7	458	



# J295



TPV

DD13

UL94  
HB



## LIGHT TOGGLE CLAMP WITH THRUST ROD AND THREADED ATTACHMENT

### Materials:

- (1) TPV thermoplastic rubber handle. Hardness 75 Shore.
- (2) Sheared and bent base and lever system in sheet metal (DD13).
- (3) Rotation pins and fixing rivets in stainless steel (Aisi 304).
- (4) Thrust rod with threaded hole in free-cutting steel.
- (5) Steel lock nut, thin series with fine pitch.
- (6) Sheared and bent rectangular washers in sheet metal (DD13) for panel mounting.

### Surface finish:

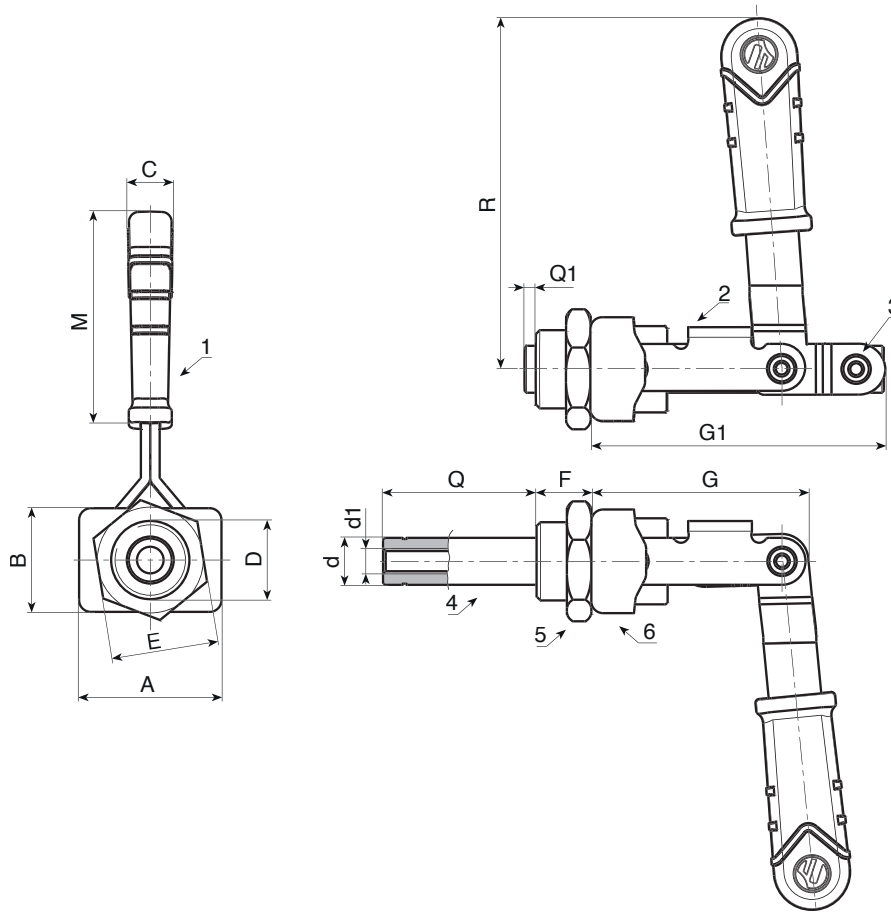
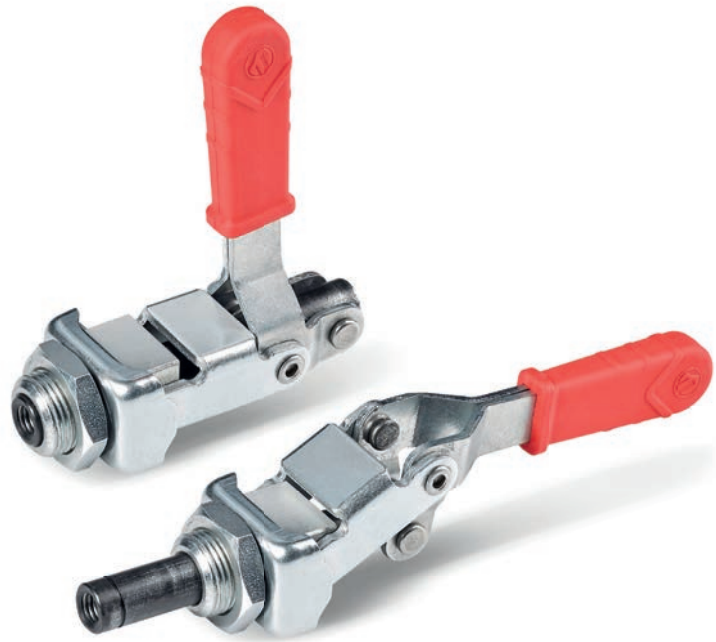
Smooth.

### Colour:

- (1) Red (RAL 3000).
- (4) Black-oxide treated.
- (2-5-6) Standard blue galvanising.

### Special Requests:

- None.



Code	art.	F1 (Kg)	A	B	C	D	E	F	G	G1	Q	Q1	M	R	d	d1	
J295015.0001	J295015.FZ16	150	36,5	26,5	12	M20x1,5	27	14	75	56	38,5	1,5	53	90	12	M8	280



# J800

## PRESSURE TIP (SPARE PART)



### Materials:

- (1) Free-cutting steel threaded stud.
- (2) Pair of steel threaded lock nuts (DIN 913).
- (3) Chloroprene rubber pressure tip (neoprene). Hardness 75 Shore.

### Surface finish:

Smooth.

### Colour:

- (2) Black (RAL 9011).
- (1-2) Standard blue galvanising.

### Packaging:

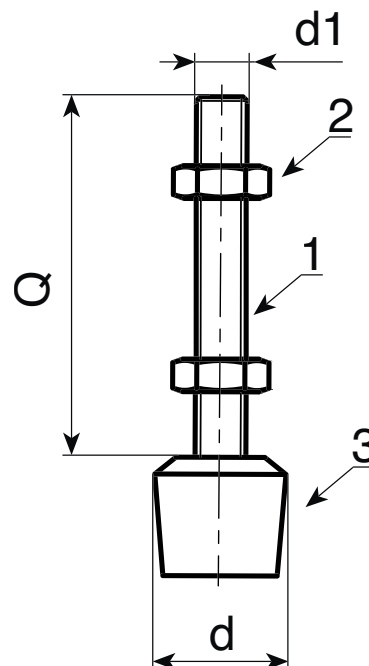
Tip supplied with the two nuts mounted.

### Special Requests:

- None.



10



Code	art.	d	d1	Q	
J80015.0001	J80015.TM06X3201	15	M6	32	14
J80015.0002	J80015.TM06X4401	15	M6	44	14
J80020.0001	J80020.TM08X5401	20	M8	54	35
J80025.0001	J80025.TM10X7501	25	M10	75	74

# J801



## BENT WASHERS IN SHEET METAL (SPARE PART)

**Materials:**

Sheared and bent washer in sheet metal (DD13).

**Surface finish:**

Smooth.

**Colour:**

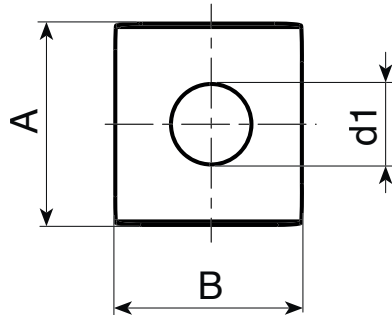
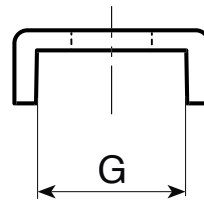
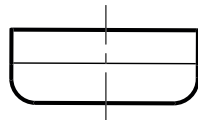
Standard blue galvanising.

**Packaging:**

No packaging, sold individually.

**Special Requests:**

- None.



Code	art.	A	B	G	d1	g
J801010.0001	J801010.F06.5Z	17	15	12	6,5	5
J801012.0001	J801012.F06.5Z	18	15	13	6,5	5
J801014.0001	J801014.F08.5Z	19	18	14	8,5	7
J801018.0001	J801018.F10.5Z	24	25	18	10,5	14

# MANICO.LEVA



## HANDLE WITH RECTANGULAR HOLE FOR TOGGLE CLAMPS (SPARE PART)

### Materials:

TPV thermoplastic rubber. Hardness 75 Shore.

### Surface finish:

Smooth.

### Colour:

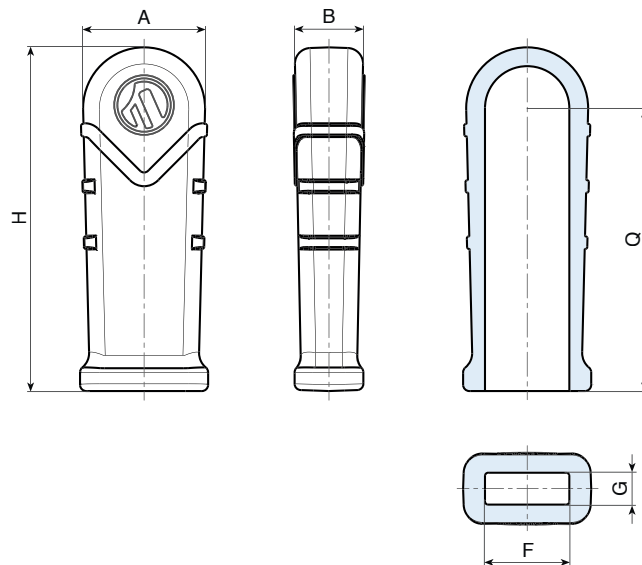
Red (RAL 3000 code 16).

### Special Requests:

- None.



10



Code	art.	H	A	B	F	G	Q	
MANICO.LEVA4216	MANICO.LEVA4216	42	17	12,5	10	6	34	4
MANICO.LEVA5516	MANICO.LEVA5516	55	20,5	11,5	13	5	44	6
MANICO.LEVA6516	MANICO.LEVA6516	65	22	12,5	15	6	54	8
MANICO.LEVA7516	MANICO.LEVA7516	75	23	14,5	16	8	64	10



ALPINE LATCHES.

