

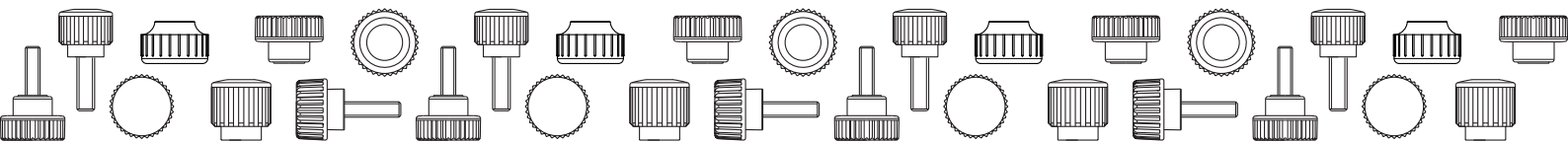


GROUP - 08

PLASTIC AND METAL KNURLED HANDWHEELS

BOTECO Plastic and Metal Knurled Handwheels

Range of handwheels with marked knurling on the outer rim of the knob, designed to offer excellent grip even when held with fingertips. Available in plastic and metal (steel, stainless steel, aluminium). These handwheels allow users to exert a certain tightening force despite being small in size and often used in tight spaces. Boteco offers various solutions both in terms of dimensions and size of the studs and inserts with threaded hole. For detailed information on the specifications of each individual product please consult the technical sheet.



H180



PF

UL94
HB

RoHS
COMPLIANT

KNURLED KNOB WITH BAKELITE HUB AND THREADED HOLE INSERT

Materials:

Phenolic resin.
Resistant to oils and greases.
Resistant to high temperatures.

Surface finish:

Glossy.

Colour:

Black (RAL 9011).

Inserts:

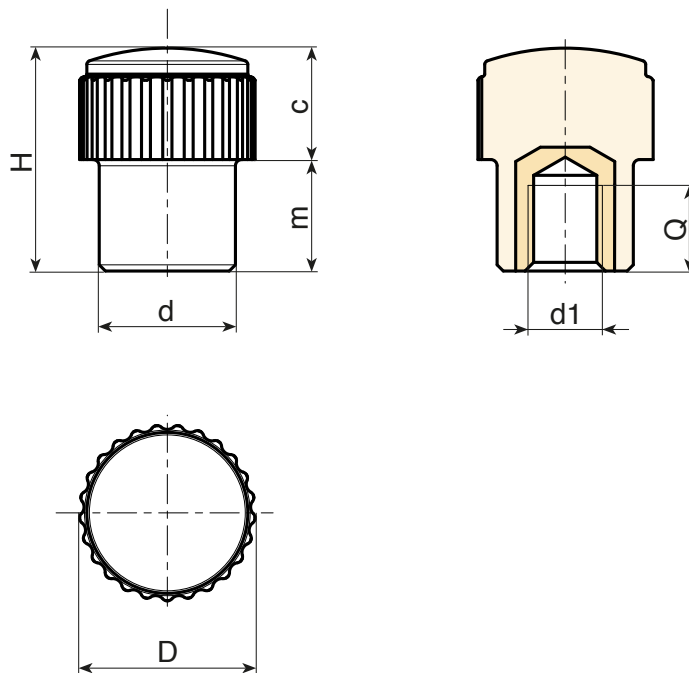
Brass insert with female threaded hole (thread tolerance 6H).

Special requests:

- None.



08



| Code | art. | D | H | d | d _{16H} | Q | g |
|-------------|---------------|----|----|----|------------------|----|---|
| H18015.0001 | H18015.BM0501 | 15 | 18 | 11 | M5 | 11 | 5 |

H765



KNURLED HOLLOW HANDWHEEL WITH THREADED THROUGH-HOLE INSERT

Materials:

Reinforced polyamide.
Resistant to oils and greases.

Surface finish:

Satin.

Colour:

Black (RAL 9011).

Inserts:

H765:

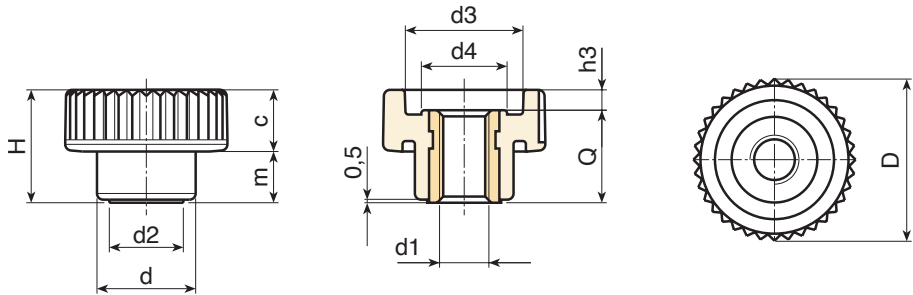
Brass insert with threaded through hole (thread tolerance 6H).

H765PIN:

Stainless steel insert with threaded through hole (Aisi 303) (thread tolerance 6H).

Special Requests:

- Upon request and for special quantities available in the colours indicated in the chart [page 959].



Version H765: brass insert.

| Code | art. | D | H | d | m | c | d2 | d3 | d4 | h3 | d1 _{6H} | Q | 🔒 |
|-------------|---------------|----|------|----|------|------|-----|----|------|-----|------------------|------|----|
| H76515.0002 | H18015.BM0501 | 15 | 10.5 | 10 | 4.5 | 6 | 8 | 10 | 7.5 | 2 | M4 | 8.5 | 2 |
| H76515.0006 | H18015.BM0501 | 15 | 10.5 | 10 | 4.5 | 6 | 8 | 10 | 7.5 | 2 | M5 | 8.5 | 2 |
| H76521.0002 | H18015.BM0501 | 21 | 15 | 13 | 6.5 | 8.5 | 9.5 | 15 | 10.5 | 2.5 | M5 | 12.5 | 5 |
| H76521.0006 | H18015.BM0501 | 21 | 15 | 13 | 6.5 | 8.5 | 9.5 | 15 | 10.5 | 2.5 | M6 | 12.5 | 5 |
| H76526.0002 | H18015.BM0501 | 26 | 18 | 16 | 8.5 | 9.5 | 12 | 19 | 13 | 3 | M6 | 15 | 10 |
| H76526.0004 | H18015.BM0501 | 26 | 18 | 16 | 8.5 | 9.5 | 12 | 19 | 13 | 3 | M8 | 15 | 10 |
| H76533.0002 | H18015.BM0501 | 32 | 23 | 20 | 10.5 | 12.5 | 15 | 23 | 16 | 5 | M8 | 18 | 16 |
| H76533.0004 | H18015.BM0501 | 32 | 23 | 20 | 10.5 | 12.5 | 15 | 23 | 16 | 5 | M10 | 18 | 16 |
| H76540.0002 | H18015.BM0501 | 40 | 28 | 25 | 12.5 | 15.5 | 18 | 28 | 21 | 6 | M8 | 22 | 31 |
| H76540.0004 | H18015.BM0501 | 40 | 28 | 25 | 12.5 | 15.5 | 18 | 28 | 21 | 6 | M10 | 22 | 32 |
| H76540.0006 | H18015.BM0501 | 40 | 28 | 25 | 12.5 | 15.5 | 18 | 28 | 21 | 6 | M12 | 22 | 32 |
| H76540.0008 | H18015.BM0501 | 40 | 28 | 25 | 12.5 | 15.5 | 18 | 28 | 21 | 6 | M14 | 22 | 34 |

Version H765PIN: stainless steel insert Aisi 303.



| Code | art. | D | H | d | m | c | d2 | d3 | d4 | h3 | d1 _{6H} | Q | 🔒 |
|-------------|---------------|----|------|----|------|------|-----|----|------|-----|------------------|------|------|
| H76515.0003 | H18015.BM0501 | 15 | 10.5 | 10 | 4.5 | 6 | 8 | 10 | 7.5 | 2 | M4 | 8.5 | 3 |
| H76515.0007 | H18015.BM0501 | 15 | 10.5 | 10 | 4.5 | 6 | 8 | 10 | 7.5 | 2 | M5 | 8.5 | 3 |
| H76521.0003 | H18015.BM0501 | 21 | 15 | 13 | 6.5 | 8.5 | 9.5 | 15 | 10.5 | 2.5 | M5 | 12.5 | 6 |
| H76521.0007 | H18015.BM0501 | 21 | 15 | 13 | 6.5 | 8.5 | 9.5 | 15 | 10.5 | 2.5 | M6 | 12.5 | 6 |
| H76526.0003 | H18015.BM0501 | 26 | 18 | 16 | 8.5 | 9.5 | 12 | 19 | 13 | 3 | M6 | 15 | 11.5 |
| H76526.0005 | H18015.BM0501 | 26 | 18 | 16 | 8.5 | 9.5 | 12 | 19 | 13 | 3 | M8 | 15 | 11.5 |
| H76533.0003 | H18015.BM0501 | 32 | 23 | 20 | 10.5 | 12.5 | 15 | 23 | 16 | 5 | M8 | 18 | 18 |
| H76533.0005 | H18015.BM0501 | 32 | 23 | 20 | 10.5 | 12.5 | 15 | 23 | 16 | 5 | M10 | 18 | 18 |
| H76540.0003 | H18015.BM0501 | 40 | 28 | 25 | 12.5 | 15.5 | 18 | 28 | 21 | 6 | M8 | 22 | 32 |
| H76540.0005 | H18015.BM0501 | 40 | 28 | 25 | 12.5 | 15.5 | 18 | 28 | 21 | 6 | M10 | 22 | 31 |
| H76540.0007 | H18015.BM0501 | 40 | 28 | 25 | 12.5 | 15.5 | 18 | 28 | 21 | 6 | M12 | 22 | 34 |



H766



PA6
+G.F.

UL94
HB



KNURLED HOLLOW HANDWHEEL WITH THREADED STUD

Materials:

Reinforced polyamide.
Resistant to oils and greases.

Surface finish:

Satin.

Colour:

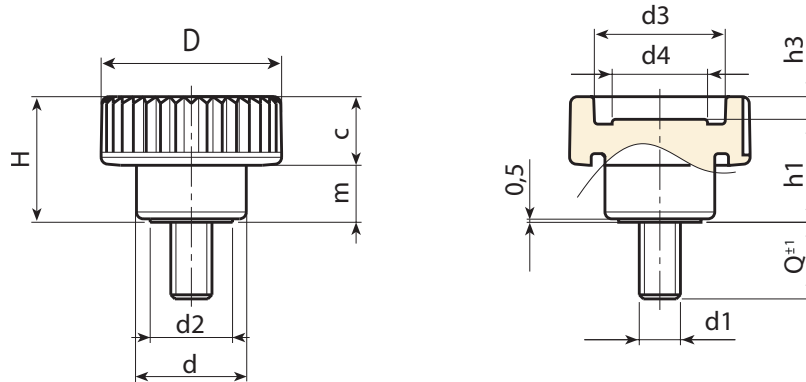
Black (RAL 9011).

Inserts:

Galvanised steel threaded stud (thread tolerance 6g).

Special Requests:

- Upon request and for special quantities inserts can be supplied with customised lengths.
- Upon request and for special quantities inserts can be supplied in different materials.
- Upon request and for special quantities available in the colours indicated in the chart [page 959].



| Code | art. | D | H | d | m | c | d2 | d3 | d4 | h1 | h3 | LM | d1 _{6g} | Q | g |
|-------------|---------------|----|------|----|------|------|-----|----|------|------|-----|-----|------------------|----|------|
| H76615.0001 | H18015.BM0501 | 15 | 10.5 | 10 | 4.5 | 6 | 8 | 10 | 7.5 | 8.5 | 2 | 40 | M4 | 11 | 2,5 |
| H76615.0004 | H18015.BM0501 | 15 | 10.5 | 10 | 4.5 | 6 | 8 | 10 | 7.5 | 8.5 | 2 | 40 | M4 | 15 | 3 |
| H76615.0007 | H18015.BM0501 | 15 | 10.5 | 10 | 4.5 | 6 | 8 | 10 | 7.5 | 8.5 | 2 | 40 | M4 | 19 | 3,5 |
| H76615.0013 | H18015.BM0501 | 15 | 10.5 | 10 | 4.5 | 6 | 8 | 10 | 7.5 | 8.5 | 2 | 40 | M5 | 11 | 4 |
| H76615.0016 | H18015.BM0501 | 15 | 10.5 | 10 | 4.5 | 6 | 8 | 10 | 7.5 | 8.5 | 2 | 40 | M5 | 15 | 4,5 |
| H76615.0018 | H18015.BM0501 | 15 | 10.5 | 10 | 4.5 | 6 | 8 | 10 | 7.5 | 8.5 | 2 | 40 | M5 | 19 | 5 |
| H76621.0003 | H18015.BM0501 | 21 | 15 | 13 | 6.5 | 8.5 | 9.5 | 15 | 10.5 | 12.5 | 2.5 | 40 | M5 | 10 | 6,5 |
| H76621.0005 | H18015.BM0501 | 21 | 15 | 13 | 6.5 | 8.5 | 9.5 | 15 | 10.5 | 12.5 | 2.5 | 40 | M5 | 16 | 6,5 |
| H76621.0007 | H18015.BM0501 | 21 | 15 | 13 | 6.5 | 8.5 | 9.5 | 15 | 10.5 | 12.5 | 2.5 | 40 | M5 | 20 | 7,5 |
| H76621.0011 | H18015.BM0501 | 21 | 15 | 13 | 6.5 | 8.5 | 9.5 | 15 | 10.5 | 12.5 | 2.5 | 40 | M5 | 30 | 9,5 |
| H76621.0015 | H18015.BM0501 | 21 | 15 | 13 | 6.5 | 8.5 | 9.5 | 15 | 10.5 | 12.5 | 2.5 | 40 | M6 | 10 | 7,5 |
| H76621.0022 | H18015.BM0501 | 21 | 15 | 13 | 6.5 | 8.5 | 9.5 | 15 | 10.5 | 12.5 | 2.5 | 40 | M6 | 16 | 8,5 |
| H76621.0024 | H18015.BM0501 | 21 | 15 | 13 | 6.5 | 8.5 | 9.5 | 15 | 10.5 | 12.5 | 2.5 | 40 | M6 | 20 | 9 |
| H76621.0029 | H18015.BM0501 | 21 | 15 | 13 | 6.5 | 8.5 | 9.5 | 15 | 10.5 | 12.5 | 2.5 | 40 | M6 | 25 | 10,5 |
| H76626.0002 | H18015.BM0501 | 26 | 18 | 16 | 8.5 | 9.5 | 12 | 19 | 13 | 15 | 3 | 80 | M6 | 10 | 10 |
| H76626.0006 | H18015.BM0501 | 26 | 18 | 16 | 8.5 | 9.5 | 12 | 19 | 13 | 15 | 3 | 80 | M6 | 16 | 11 |
| H76626.0009 | H18015.BM0501 | 26 | 18 | 16 | 8.5 | 9.5 | 12 | 19 | 13 | 15 | 3 | 80 | M6 | 20 | 11,5 |
| H76626.0012 | H18015.BM0501 | 26 | 18 | 16 | 8.5 | 9.5 | 12 | 19 | 13 | 15 | 3 | 80 | M6 | 25 | 12,5 |
| H76626.0029 | H18015.BM0501 | 26 | 18 | 16 | 8.5 | 9.5 | 12 | 19 | 13 | 15 | 3 | 80 | M8 | 16 | 15,5 |
| H76626.0031 | H18015.BM0501 | 26 | 18 | 16 | 8.5 | 9.5 | 12 | 19 | 13 | 15 | 3 | 80 | M8 | 20 | 16,5 |
| H76626.0034 | H18015.BM0501 | 26 | 18 | 16 | 8.5 | 9.5 | 12 | 19 | 13 | 15 | 3 | 80 | M8 | 25 | 18,5 |
| H76633.0005 | H18015.BM0501 | 32 | 23 | 20 | 10.5 | 12.5 | 15 | 23 | 16 | 18 | 5 | 80 | M8 | 16 | 21 |
| H76633.0008 | H18015.BM0501 | 32 | 23 | 20 | 10.5 | 12.5 | 15 | 23 | 16 | 18 | 5 | 80 | M8 | 20 | 24 |
| H76633.0013 | H18015.BM0501 | 32 | 23 | 20 | 10.5 | 12.5 | 15 | 23 | 16 | 18 | 5 | 80 | M8 | 30 | 30 |
| H76633.0022 | H18015.BM0501 | 32 | 23 | 20 | 10.5 | 12.5 | 15 | 23 | 16 | 18 | 5 | 80 | M10 | 20 | 30 |
| H76633.0025 | H18015.BM0501 | 32 | 23 | 20 | 10.5 | 12.5 | 15 | 23 | 16 | 18 | 5 | 80 | M10 | 30 | 30,5 |
| H76633.0026 | H18015.BM0501 | 32 | 23 | 20 | 10.5 | 12.5 | 15 | 23 | 16 | 18 | 5 | 80 | M10 | 40 | 35,5 |
| H76640.0003 | H18015.BM0501 | 40 | 28 | 25 | 12.5 | 15.5 | 18 | 28 | 21 | 22 | 6 | 100 | M8 | 16 | 29,5 |
| H76640.0005 | H18015.BM0501 | 40 | 28 | 25 | 12.5 | 15.5 | 18 | 28 | 21 | 22 | 6 | 100 | M8 | 30 | 38 |
| H76640.0006 | H18015.BM0501 | 40 | 28 | 25 | 12.5 | 15.5 | 18 | 28 | 21 | 22 | 6 | 100 | M8 | 40 | 44 |
| H76640.0011 | H18015.BM0501 | 40 | 28 | 25 | 12.5 | 15.5 | 18 | 28 | 21 | 22 | 6 | 100 | M10 | 30 | 46 |
| H76640.0019 | H18015.BM0501 | 40 | 28 | 25 | 12.5 | 15.5 | 18 | 28 | 21 | 22 | 6 | 100 | M12 | 50 | 78 |

LM = maximum mouldable length.

Threaded stud length on request, with a minimum quantity of 250 pieces.



H766CIN

+135°
-30°

PA6
+G.F.

UL94
HB

RoHS
COMPLIANT

KNURLED HOLLOW HANDWHEEL WITH STAINLESS STEEL THREADED STUD

INOX

Materials:

Reinforced polyamide.
Resistant to oils and greases.

Surface finish:

Satin.

Colour:

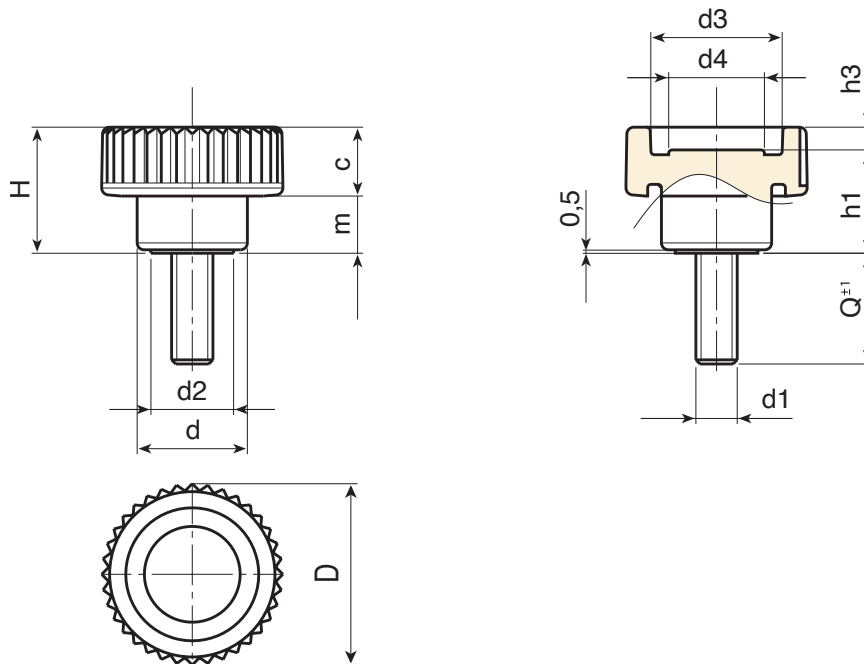
Black (RAL 9011).

Inserts:

Stainless steel threaded stud (Aisi 303) (thread tolerance 6g).

Special Requests:

- Upon request and for special quantities inserts can be supplied with customised lengths.
- Upon request and for special quantities available in the colours indicated in the chart [page 959].



INOX

| Code | art. | D | H | d | m | c | d2 | d3 | d4 | h1 | h3 | LM | d1 _{6g} | Q | |
|-------------|---------------|----|------|----|------|------|-----|----|------|------|-----|-----|------------------|----|------|
| H76615.0017 | H18015.BM0501 | 15 | 10.5 | 10 | 4.5 | 6 | 8 | 10 | 7.5 | 8.5 | 2 | 40 | M5 | 15 | - |
| H76621.0006 | H18015.BM0501 | 21 | 15 | 13 | 6.5 | 8.5 | 9.5 | 15 | 10.5 | 12.5 | 2.5 | 40 | M5 | 16 | 9.5 |
| H76621.0019 | H18015.BM0501 | 21 | 15 | 13 | 6.5 | 8.5 | 9.5 | 15 | 10.5 | 12.5 | 2.5 | 40 | M6 | 15 | - |
| H76626.0010 | H18015.BM0501 | 26 | 18 | 16 | 8.5 | 9.5 | 12 | 19 | 13 | 15 | 3 | 80 | M6 | 20 | - |
| H76626.0032 | H18015.BM0501 | 26 | 18 | 16 | 8.5 | 9.5 | 12 | 19 | 13 | 15 | 3 | 80 | M8 | 20 | 16.5 |
| H76633.0017 | H18015.BM0501 | 32 | 23 | 20 | 10.5 | 12.5 | 15 | 23 | 16 | 18 | 5 | 80 | M8 | 40 | 36 |
| H76640.0009 | H18015.BM0501 | 40 | 28 | 25 | 12.5 | 15.5 | 18 | 28 | 21 | 22 | 6 | 100 | M10 | 20 | - |
| H76640.0018 | H18015.BM0501 | 40 | 28 | 25 | 12.5 | 15.5 | 18 | 28 | 21 | 22 | 6 | 100 | M12 | 30 | - |

LM = maximum mouldable length.

Threaded stud length on request, with a minimum quantity of 250 pieces.



H767



KNURLED HOLLOW HANDWHEEL WITH FEMALE THREADED INSERT

Materials:

Reinforced polyamide.
Resistant to oils and greases.

Surface finish:

Satin.

Colour:

Black (RAL 9011).

Inserts:

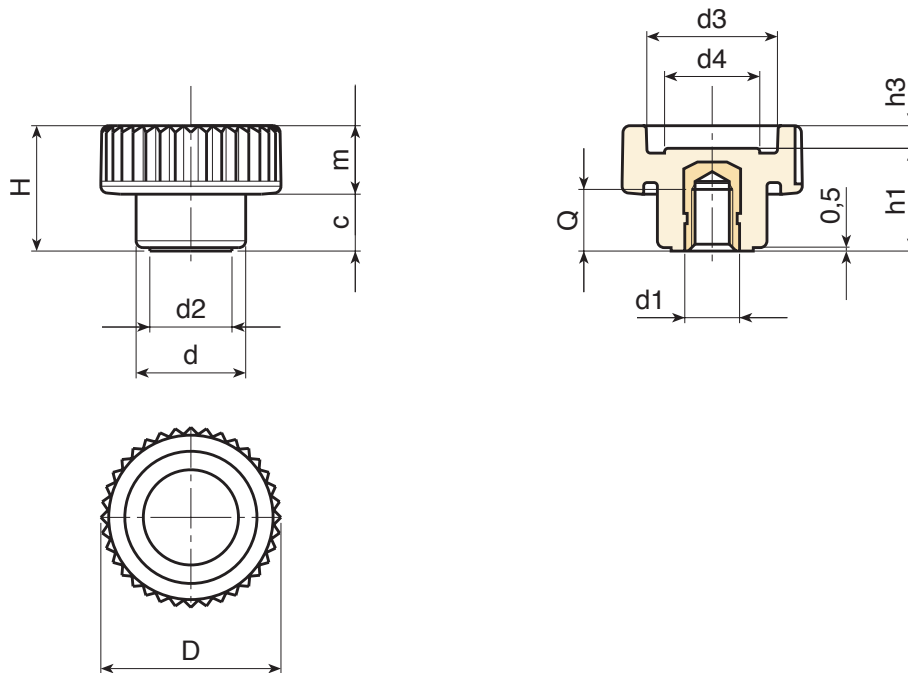
Brass insert with female threaded hole (thread tolerance 6H).

Special Requests:

- Upon request and for special quantities inserts can be supplied in different materials.
- Upon request and for special quantities available in the colours indicated in the chart [page 959].



08



| Code | art. | D | H | d | m | c | d2 | d3 | d4 | h1 | h3 | d1 _{6H} | Q | |
|-------------|---------------|----|----|----|------|------|-----|----|------|------|-----|------------------|----|------|
| H76721.0002 | H18015.BM0501 | 21 | 15 | 13 | 6.5 | 8.5 | 9.5 | 15 | 10.5 | 12.5 | 2.5 | M5 | 7 | 5.5 |
| H76721.0005 | H18015.BM0501 | 21 | 15 | 13 | 6.5 | 8.5 | 9.5 | 15 | 10.5 | 12.5 | 2.5 | M6 | 7 | 6 |
| H76726.0002 | H18015.BM0501 | 26 | 18 | 16 | 8.5 | 9.5 | 12 | 19 | 13 | 15 | 3 | M6 | 9 | 8 |
| H76726.0005 | H18015.BM0501 | 26 | 18 | 16 | 8.5 | 9.5 | 12 | 19 | 13 | 15 | 3 | M8 | 8 | 8.5 |
| H76733.0002 | H18015.BM0501 | 32 | 23 | 20 | 10.5 | 12.5 | 15 | 23 | 16 | 18 | 5 | M8 | 11 | 15.5 |
| H76733.0004 | H18015.BM0501 | 32 | 23 | 20 | 10.5 | 12.5 | 15 | 23 | 16 | 18 | 5 | M10 | 10 | 16 |
| H76740.0001 | H18015.BM0501 | 40 | 28 | 25 | 12.5 | 15.5 | 18 | 28 | 21 | 22 | 6 | M8 | 14 | 27 |
| H76740.0002 | H18015.BM0501 | 40 | 28 | 25 | 12.5 | 15.5 | 18 | 28 | 21 | 22 | 6 | M10 | 14 | 28 |
| H76740.0003 | H18015.BM0501 | 40 | 28 | 25 | 12.5 | 15.5 | 18 | 28 | 21 | 22 | 6 | M12 | 12 | 29 |

H757



KNURLED SOLID HANDWHEEL WITH FEMALE THREADED INSERT

Materials:

Reinforced polyamide.
Resistant to oils and greases.

Surface finish:

Satin.

Colour:

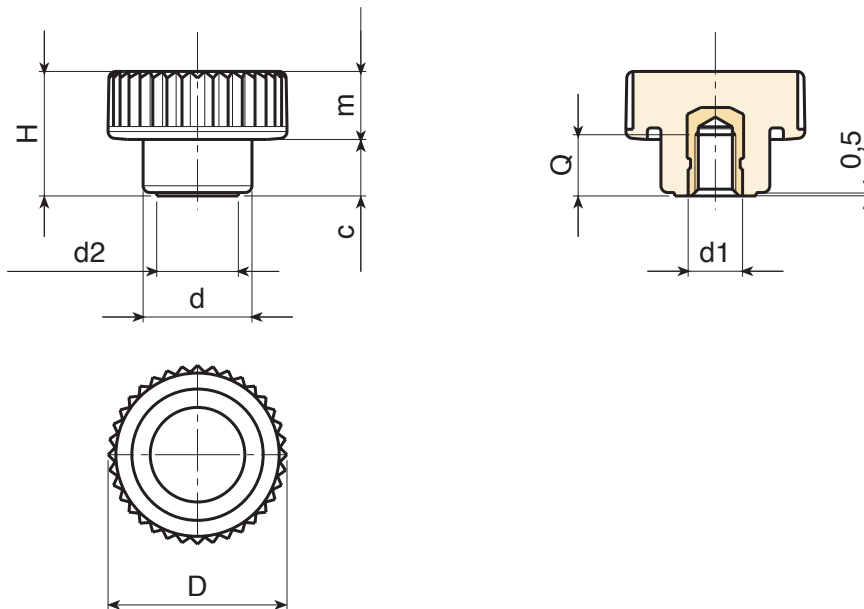
Black (RAL 9011).

Inserts:

Brass insert with female threaded hole (thread tolerance 6H).

Special Requests:

- Upon request and for special quantities inserts can be supplied in different materials.
- Upon request and for special quantities available in the colours indicated in the chart [page 959].



| Code | art. | D | H | d | m | c | d2 | d1 _{6H} | Q | |
|-------------|---------------|----|----|----|-----|-----|----|------------------|---|----|
| H75726.0007 | H18015.BM0501 | 26 | 18 | 16 | 8.5 | 9.5 | 12 | M5 | 6 | 9 |
| H75726.0008 | H18015.BM0501 | 26 | 18 | 16 | 8.5 | 9.5 | 12 | M6 | 9 | 10 |
| H75726.0009 | H18015.BM0501 | 26 | 18 | 16 | 8.5 | 9.5 | 12 | M8 | 8 | 11 |

H753



KNURLED SOLID HANDWHEEL WITH THREADED STUD

Materials:

Reinforced polyamide.
Resistant to oils and greases.

Surface finish:

Satin.

Colour:

Black (RAL 9011).

Inserts:

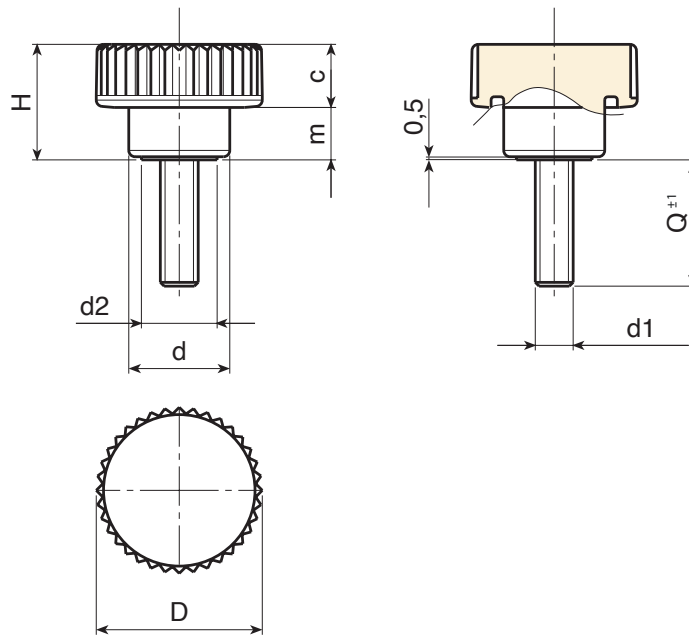
Galvanised steel threaded stud (thread tolerance 6g).

Special Requests:

- Upon request and for special quantities inserts can be supplied with customised lengths.
- Upon request and for special quantities inserts can be supplied in different materials.
- Upon request and for special quantities available in the colours indicated in the chart [page 959].



08



| Code | art. | D | H | d | m | c | d2 | LM | d1 _{6g} | Q | g |
|-------------|---------------|----|----|----|-----|-----|----|----|------------------|----|----|
| H75326.0004 | H18015.BM0501 | 26 | 18 | 16 | 8.5 | 9.5 | 12 | 50 | M5 | 20 | 10 |
| H75326.0008 | H18015.BM0501 | 26 | 18 | 16 | 8.5 | 9.5 | 12 | 50 | M6 | 20 | 13 |
| H75326.0009 | H18015.BM0501 | 26 | 18 | 16 | 8.5 | 9.5 | 12 | 50 | M6 | 25 | 14 |
| H75326.0012 | H18015.BM0501 | 26 | 18 | 16 | 8.5 | 9.5 | 12 | 50 | M8 | 20 | 20 |
| H75326.0014 | H18015.BM0501 | 26 | 18 | 16 | 8.5 | 9.5 | 12 | 50 | M8 | 30 | 22 |

LM = maximum mouldable length.

Threaded stud length on request, with a minimum quantity of 250 pieces.



H758



KNURLED HANDWHEEL WITH HUB AND FEMALE THREADED INSERT

Materials:

Reinforced polyamide.
Resistant to oils and greases.

Surface finish:

Satin.

Colour:

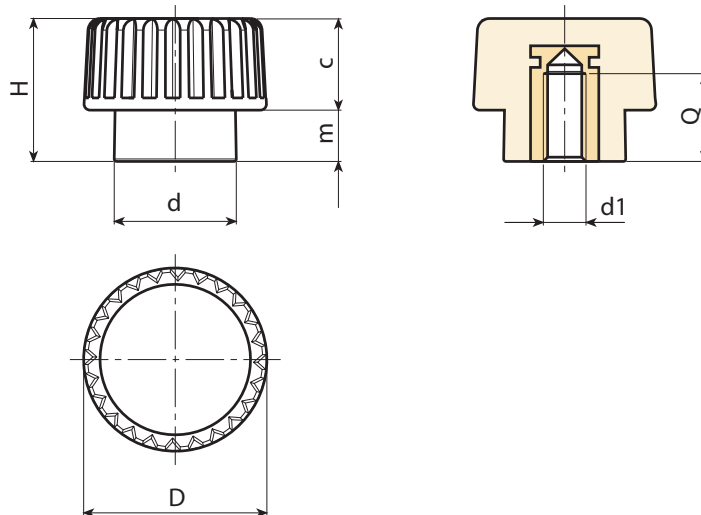
Black (RAL 9011).

Inserts:

Brass insert with female threaded hole (thread tolerance 6H).

Special Requests:

- Upon request and for special quantities inserts can be supplied in different materials.
- Upon request and for special quantities available in the colours indicated in the chart [page 959].



| Code | art. | D | H | d | m | c | d1 ^{6H} | Q | g |
|-------------|---------------|----|----|----|-----|-----|------------------|---|---|
| H75815.0002 | H18015.BM0501 | 15 | 12 | 10 | 4.5 | 7.5 | M4 | 7 | 4 |
| H75815.0005 | H18015.BM0501 | 15 | 12 | 10 | 4.5 | 7.5 | M5 | 7 | 4 |
| H75815.0010 | H18015.BM0501 | 15 | 12 | 10 | 4.5 | 7.5 | M6 | 7 | 4 |

H759



KNURLED HANDWHEEL WITH HUB AND THREADED STUD

Materials:

Reinforced polyamide.
Resistant to oils and greases.

Surface finish:

Satin.

Colour:

Black (RAL 9011).

Inserts:

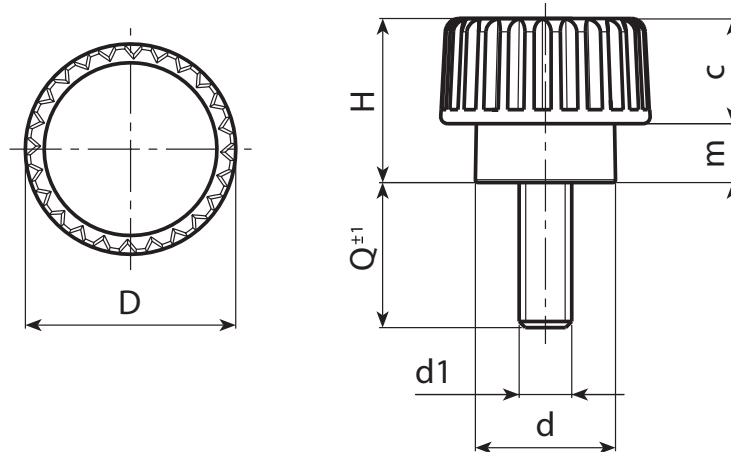
Galvanised steel threaded stud (thread tolerance 6g).

Special Requests:

- Upon request and for special quantities inserts can be supplied with customised lengths.
- Upon request and for special quantities inserts can be supplied in different materials.
- Upon request and for special quantities available in the colours indicated in the chart [page 959].



08



| Code | art. | D | H | d | m | c | LM | d1 _{6g} | Q | |
|-------------|---------------|----|----|----|-----|-----|----|------------------|----|-----|
| H75915.0002 | H18015.BM0501 | 15 | 12 | 10 | 4.5 | 7.5 | 70 | M3 | 11 | 3 |
| H75915.0004 | H18015.BM0501 | 15 | 12 | 10 | 4.5 | 7.5 | 70 | M3 | 24 | 3,5 |
| H75915.0005 | H18015.BM0501 | 15 | 12 | 10 | 4.5 | 7.5 | 70 | M4 | 10 | 3,5 |
| H75915.0009 | H18015.BM0501 | 15 | 12 | 10 | 4.5 | 7.5 | 70 | M4 | 20 | 4 |
| H75915.0014 | H18015.BM0501 | 15 | 12 | 10 | 4.5 | 7.5 | 70 | M4 | 30 | 4,5 |
| H75915.0020 | H18015.BM0501 | 15 | 12 | 10 | 4.5 | 7.5 | 70 | M5 | 10 | 4 |
| H75915.0024 | H18015.BM0501 | 15 | 12 | 10 | 4.5 | 7.5 | 70 | M5 | 16 | 4,5 |
| H75915.0025 | H18015.BM0501 | 15 | 12 | 10 | 4.5 | 7.5 | 70 | M5 | 20 | 5,5 |
| H75915.0026 | H18015.BM0501 | 15 | 12 | 10 | 4.5 | 7.5 | 70 | M5 | 30 | 6,5 |
| H75915.0028 | H18015.BM0501 | 15 | 12 | 10 | 4.5 | 7.5 | 70 | M6 | 10 | 5 |
| H75915.0030 | H18015.BM0501 | 15 | 12 | 10 | 4.5 | 7.5 | 70 | M6 | 16 | 6 |
| H75915.0032 | H18015.BM0501 | 15 | 12 | 10 | 4.5 | 7.5 | 70 | M6 | 20 | 7,5 |

LM = maximum mouldable length.

Threaded stud length on request, with a minimum quantity of 250 pieces.



H760

KNURLED HANDWHEEL WITH THREADED STUD



Materials:

Reinforced polyamide.
Resistant to oils and greases.

Surface finish:

Satin.

Colour:

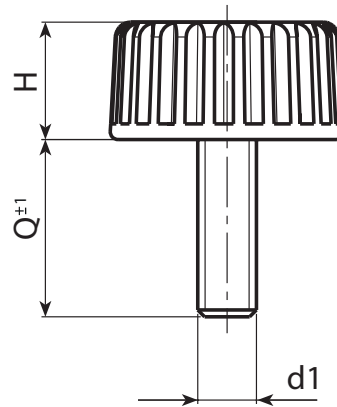
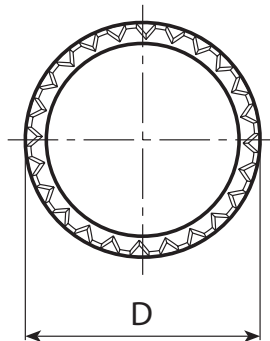
Black (RAL 9011).

Inserts:

Galvanised steel threaded stud (thread tolerance 6g).

Special Requests:

- Upon request and for special quantities inserts can be supplied with customised lengths.
- Upon request and for special quantities inserts can be supplied in different materials.
- Upon request and for special quantities available in the colours indicated in the chart [page 959].



| Code | art. | D | H | LM | d1 _{6g} | Q | g |
|-------------|------------------|----|---|----|------------------|----|-----|
| H76015.0004 | H76015.TM04X1301 | 15 | 8 | 77 | M4 | 13 | 2 |
| H76015.0005 | H76015.TM04X1501 | 15 | 8 | 77 | M4 | 15 | 2 |
| H76015.0009 | H76015.TM04X1901 | 15 | 8 | 77 | M4 | 19 | 2,5 |
| H76015.0012 | H76015.TM04X2401 | 15 | 8 | 77 | M4 | 24 | 3 |
| H76015.0021 | H76015.TM05X1501 | 15 | 8 | 77 | M5 | 15 | 4 |
| H76015.0026 | H76015.TM05X1901 | 15 | 8 | 77 | M5 | 19 | 4,5 |
| H76015.0027 | H76015.TM05X2401 | 15 | 8 | 77 | M5 | 24 | 5 |
| H76015.0029 | H76015.TM05X2901 | 15 | 8 | 77 | M5 | 29 | 5,5 |
| H76015.0035 | H76015.TM06X1501 | 15 | 8 | 77 | M6 | 15 | 5,5 |
| H76015.0039 | H76015.TM06X1901 | 15 | 8 | 77 | M6 | 19 | 6,5 |
| H76015.0042 | H76015.TM06X2401 | 15 | 8 | 77 | M6 | 24 | 7 |
| H76015.0043 | H76015.TM06X2901 | 15 | 8 | 77 | M6 | 29 | 7,5 |

LM = maximum mouldable length.

Threaded stud length on request, with a minimum quantity of 250 pieces.



H770

KNURLED KNOB WITH FEMALE THREADED INSERT



Materials:

Reinforced polyamide.
Resistant to oils and greases.

Surface finish:

Satin.

Colour:

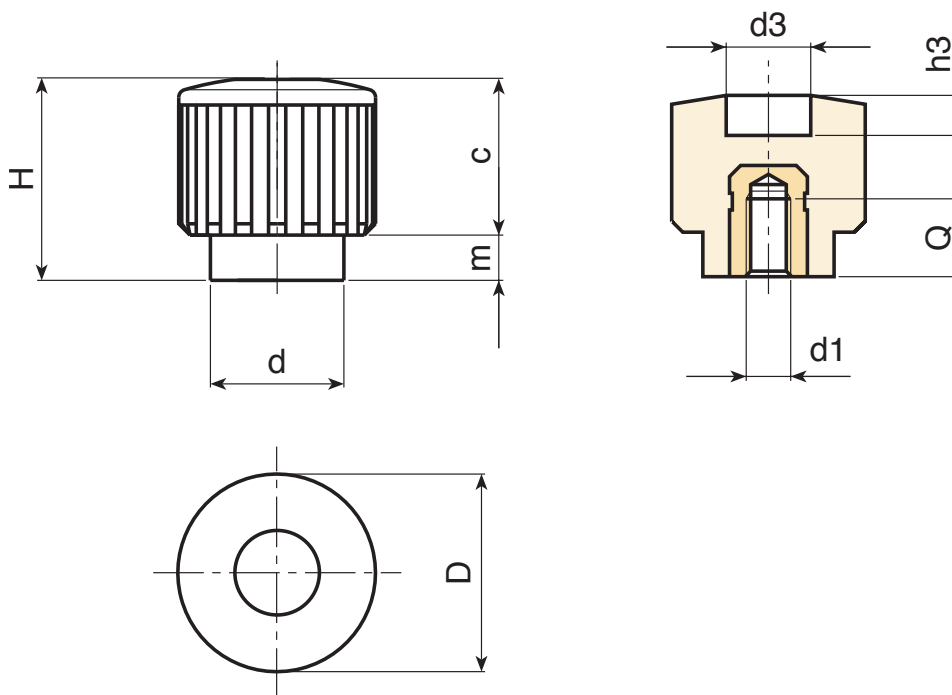
Black (RAL 9011).

Inserts:

Brass insert with female threaded hole (thread tolerance 6H).

Special Requests:

- Upon request and for special quantities inserts can be supplied in different materials.
- Upon request and for special quantities available in the colours indicated in the chart [page 959].



| Code | art. | D | H | d | m | c | d3 | h3 | d1 _{6H} | Q | |
|-------------|---------------|------|------|----|---|------|----|----|------------------|---|---|
| H77018.0001 | H18015.BM0501 | 17.5 | 17.5 | 12 | 4 | 13.5 | 9 | 5 | M4 | 7 | 5 |
| H77018.0002 | H18015.BM0501 | 17.5 | 17.5 | 12 | 4 | 13.5 | 9 | 5 | M5 | 7 | 5 |
| H77018.0003 | H18015.BM0501 | 17.5 | 17.5 | 12 | 4 | 13.5 | 9 | 5 | M6 | 7 | 5 |

H771

KNURLED KNOB WITH THREADED STUD



Materials:

Reinforced polyamide.
Resistant to oils and greases.

Surface finish:

Satin.

Colour:

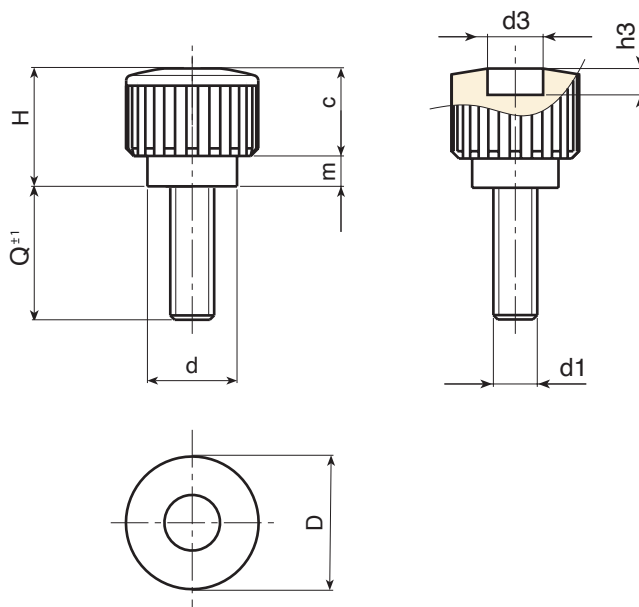
Black (RAL 9011).

Inserts:

Galvanised steel threaded stud (thread tolerance 6g).

Special Requests:

- Upon request and for special quantities inserts can be supplied with customised lengths.
- Upon request and for special quantities inserts can be supplied in different materials.
- Upon request and for special quantities available in the colours indicated in the chart [page 959].



| Code | art. | D | H | d | m | c | d3 | h3 | LM | d1 _{6g} | Q | g |
|-------------|---------------|------|------|----|---|------|----|----|----|------------------|----|-----|
| H77118.0001 | H18015.BM0501 | 17.5 | 17.5 | 12 | 4 | 13.5 | 9 | 5 | 50 | M4 | 10 | 6 |
| H77118.0005 | H18015.BM0501 | 17.5 | 17.5 | 12 | 4 | 13.5 | 9 | 5 | 50 | M4 | 16 | 6,5 |
| H77118.0008 | H18015.BM0501 | 17.5 | 17.5 | 12 | 4 | 13.5 | 9 | 5 | 50 | M4 | 30 | 8 |
| H77118.0010 | H18015.BM0501 | 17.5 | 17.5 | 12 | 4 | 13.5 | 9 | 5 | 60 | M5 | 10 | 6,5 |
| H77118.0012 | H18015.BM0501 | 17.5 | 17.5 | 12 | 4 | 13.5 | 9 | 5 | 60 | M5 | 16 | 7 |
| H77118.0013 | H18015.BM0501 | 17.5 | 17.5 | 12 | 4 | 13.5 | 9 | 5 | 60 | M5 | 20 | 8 |
| H77118.0024 | H18015.BM0501 | 17.5 | 17.5 | 12 | 4 | 13.5 | 9 | 5 | 60 | M6 | 16 | 8,5 |
| H77118.0026 | H18015.BM0501 | 17.5 | 17.5 | 12 | 4 | 13.5 | 9 | 5 | 60 | M6 | 20 | 9 |

LM = maximum mouldable length.

Threaded stud length on request, with a minimum quantity of 250 pieces.



H772



KNURLED KNOB WITH THREADED THROUGH-HOLE INSERT

Materials:

Reinforced polyamide.
Resistant to oils and greases.

Surface finish:

Satin.

Colour:

Black (RAL 9011).

Inserts:

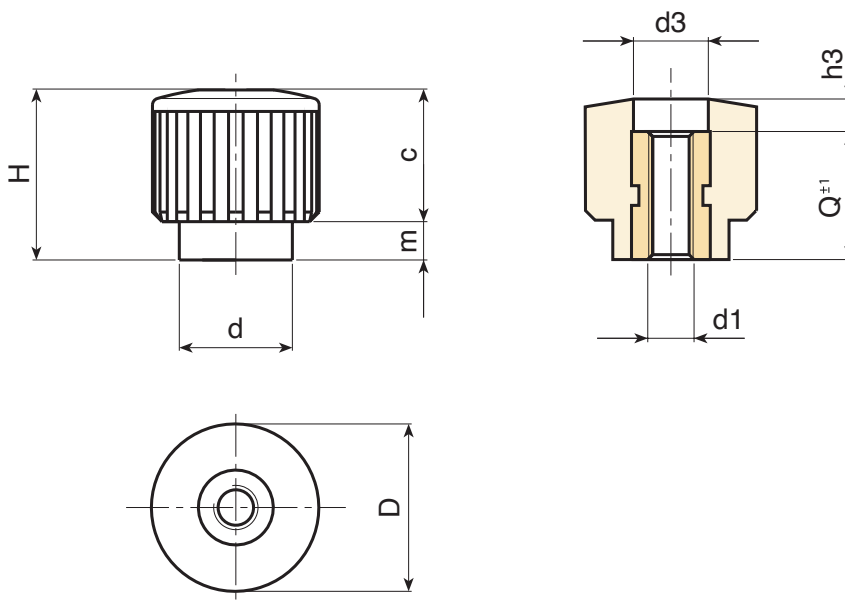
Brass insert with threaded through hole (thread tolerance 6H).

Special Requests:

- Upon request and for special quantities inserts can be supplied in different materials.
- Upon request and for special quantities available in the colours indicated in the chart [page 959].



08



| Code | art. | D | H | d | m | c | d3 | h3 | d1 ^{6H} | Q | |
|-------------|---------------|------|------|----|---|------|----|-----|------------------|----|-----|
| H77218.0001 | H18015.BM0501 | 17.5 | 17.5 | 12 | 4 | 13.5 | 9 | 4.5 | M4 | 13 | 5.5 |
| H77218.0002 | H18015.BM0501 | 17.5 | 17.5 | 12 | 4 | 13.5 | 9 | 4.5 | M5 | 13 | 5.5 |
| H77218.0003 | H18015.BM0501 | 17.5 | 17.5 | 12 | 4 | 13.5 | 9 | 4.5 | M6 | 13 | 5.5 |

H773



KNURLED KNOB WITH SLOT END AND FEMALE THREADED INSERT

Materials:

Reinforced polyamide.
Resistant to oils and greases.

Surface finish:

Satin.

Colour:

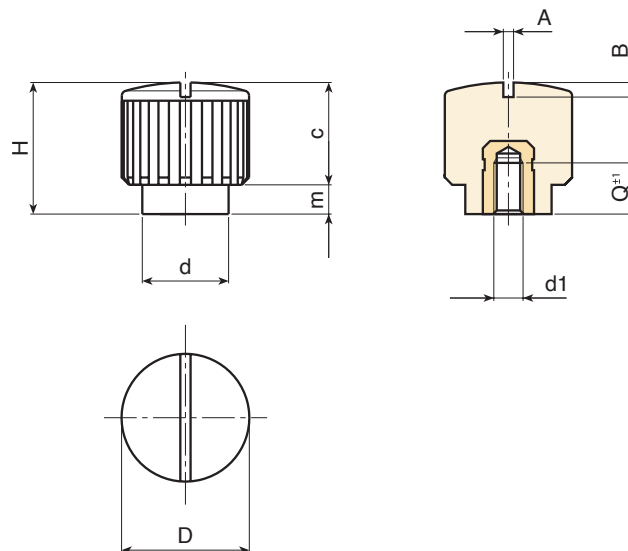
Black (RAL 9011).

Inserts:

Brass insert with female threaded hole (thread tolerance 6H).

Special Requests:

- Upon request and for special quantities inserts can be supplied in different materials.
- Upon request and for special quantities available in the colours indicated in the chart [page 959].



| Code | art. | D | H | d | m | c | A | B | d1 ^{6H} | Q | g |
|-------------|---------------|------|----|----|---|----|-----|-----|------------------|---|-----|
| H77318.0001 | H18015.BM0501 | 17.5 | 18 | 12 | 4 | 14 | 1.2 | 1.5 | M4 | 7 | 6.5 |
| H77318.0002 | H18015.BM0501 | 17.5 | 18 | 12 | 4 | 14 | 1.2 | 1.5 | M5 | 7 | 7 |
| H77318.0003 | H18015.BM0501 | 17.5 | 18 | 12 | 4 | 14 | 1.2 | 1.5 | M6 | 7 | 7 |

H774



KNURLED KNOB WITH SLOT END AND THREADED STUD

Materials:

Reinforced polyamide.
Resistant to oils and greases.

Surface finish:

Satin.

Colour:

Black (RAL 9011).

Inserts:

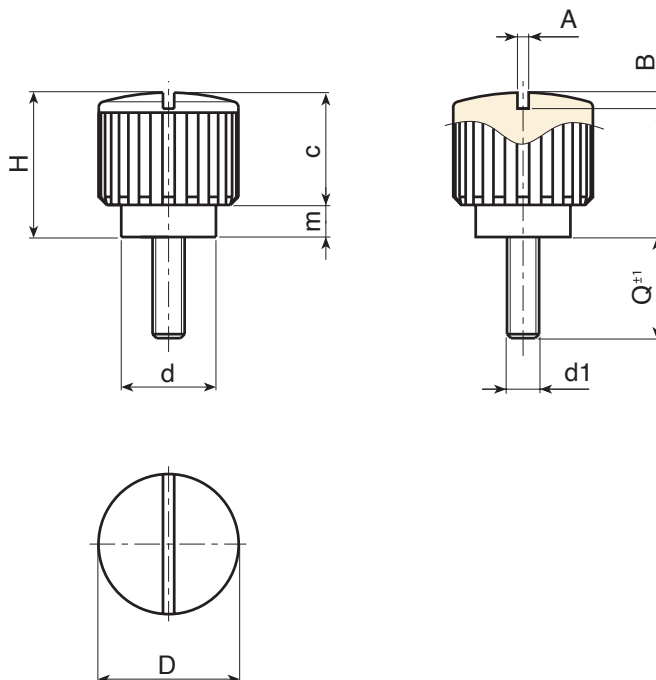
Galvanised steel threaded stud (thread tolerance 6g).

Special Requests:

- Upon request and for special quantities inserts can be supplied with customised lengths.
- Upon request and for special quantities inserts can be supplied in different materials.
- Upon request and for special quantities available in the colours indicated in the chart [page 959].



08



| Code | art. | D | H | d | m | c | A | B | LM | d1 _{6g} | Q | g |
|-------------|---------------|------|----|----|---|----|-----|-----|----|------------------|----|-----|
| H77418.0003 | H18015.BM0501 | 17.5 | 18 | 12 | 4 | 14 | 1.2 | 1.5 | 50 | M4 | 30 | 7.5 |
| H77418.0006 | H18015.BM0501 | 17.5 | 18 | 12 | 4 | 14 | 1.2 | 1.5 | 60 | M5 | 30 | 9 |
| H77418.0009 | H18015.BM0501 | 17.5 | 18 | 12 | 4 | 14 | 1.2 | 1.5 | 60 | M6 | 30 | 11 |

LM = maximum mouldable length.

Threaded stud length on request, with a minimum quantity of 250 pieces.



H172

KNURLED KNOB WITH SLOT END AND THREADED STUD



Materials:

Reinforced polyamide.
Resistant to oils and greases.

Surface finish:

Satin.

Colour:

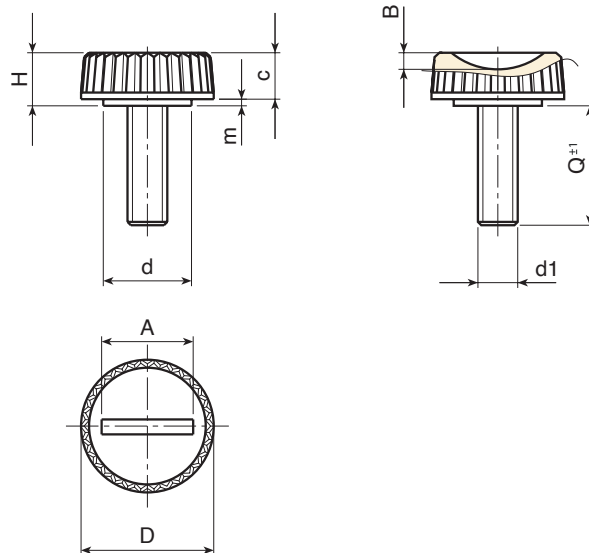
Black (RAL 9011).

Inserts:

Galvanised steel threaded stud (thread tolerance 6g).

Special Requests:

- Upon request and for special quantities inserts can be supplied with customised lengths.
- Upon request and for special quantities inserts can be supplied in different materials.
- Upon request and for special quantities available in the colours indicated in the chart [page 959].



| Code | art. | D | H | d | m | c | A | B | LM | d1 _{6g} | Q | g |
|-------------|------------------|----|---|------|---|---|----|-----|----|------------------|----|---|
| H17220.0003 | H17220.TM06X1501 | 20 | 8 | 13,5 | 1 | 7 | 14 | 2,5 | 39 | M6 | 15 | 7 |

LM = maximum mouldable length.
Threaded stud length on request, with a minimum quantity of 250 pieces.



H171

KNURLED HANDWHEEL WITH SHORT HUB



Materials:

Reinforced polyamide.
Resistant to oils and greases.

Surface finish:

Satin.

Colour:

Black (RAL 9011).

Inserts:

H171:

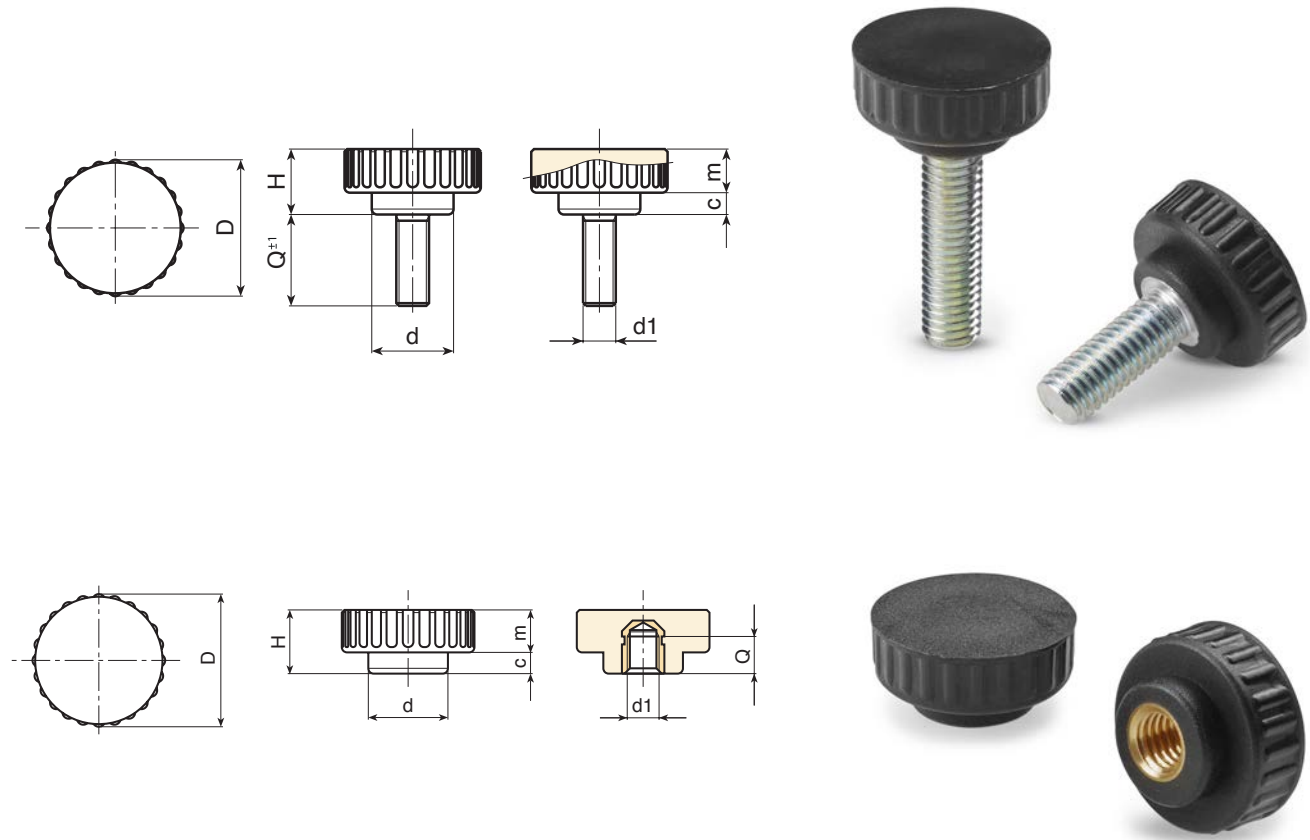
Galvanised steel threaded stud (thread tolerance 6g).

H171CON:

Brass insert with female threaded hole (thread tolerance 6H).

Special requests:

- Upon request and for special quantities inserts with stud can be supplied with customised lengths for a minimum quantity of 100 pieces.



Version H171CON: With brass insert.

| Code | art. | D | H | d | m | c | d1 _{6H} | g |
|-------------|---------------|----|----|------|---|---|------------------|---|
| H17125.0002 | H18015.BM0501 | 25 | 12 | 15.5 | 4 | 8 | M6 | 7 |
| H17125.0015 | H18015.BM0501 | 25 | 12 | 15.5 | 4 | 8 | M6 | 8 |

Version H171: With galvanised steel stud.

| Code | art. | D | H | d | m | c | LM | d1 _{6g} | Q | g |
|-------------|---------------|----|----|------|---|---|----|------------------|----|----|
| H17125.0006 | H18015.BM0501 | 25 | 12 | 15.5 | 4 | 8 | 40 | M6 | 20 | 11 |
| H17125.0019 | H18015.BM0501 | 25 | 12 | 15.5 | 4 | 8 | 40 | M8 | 20 | 15 |

LM = maximum mouldable length.
Customised stud length available for a minimum of 250 pieces.



W459HIN

NEW

+200°
-40°

Aisi
304

RoHS
COMPLIANT

STAINLESS STEEL KNURLED KNOB WITH THREADED HOLE

INOX

Materials:

Precision-cast stainless steel, (Aisi 304).

Surface finish:

Electropolished satin finish.

Colour:

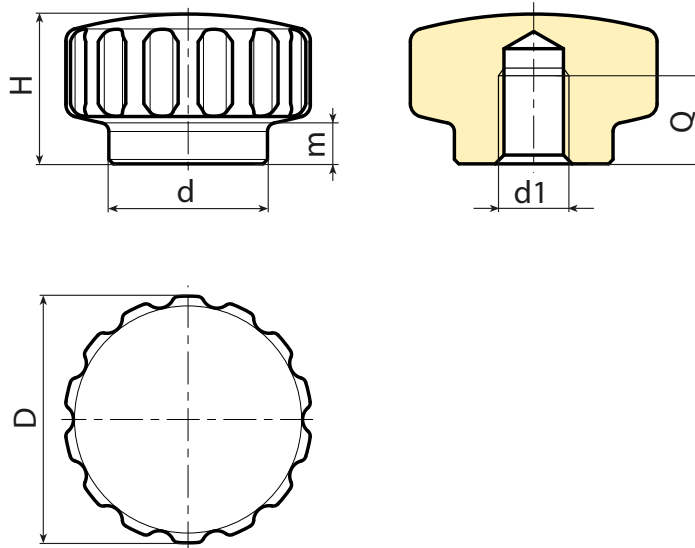
Natural.

Hole:

Female threaded hole (thread tolerance 6H).

Special requests:

- None.



INOX

| Code | Art. | D | H | d | m | d1 _{6H} | Q | g |
|--------------|---------------|----|----|----|-----|------------------|----|---|
| W459020.0001 | H18015.BM0501 | 20 | 13 | 14 | 4,5 | M5 | 8 | 3 |
| W459024.0001 | H18015.BM0501 | 24 | 15 | 16 | 4,5 | M6 | 9 | 3 |
| W459028.0001 | H18015.BM0501 | 28 | 17 | 18 | 4,5 | M8 | 10 | 3 |

W460HIN NEW



STAINLESS STEEL KNURLED KNOB WITH THREADED STUD



Materials:

Knob:

Precision-cast stainless steel, (Aisi 304).

Stud:

Stainless steel (Aisi 303).

Surface finish:

Knob:

Electropolished satin finish.

Stud:

Smooth.

Colour:

Natural.

Inserts:

Turned threaded stud (thread tolerance 6g).

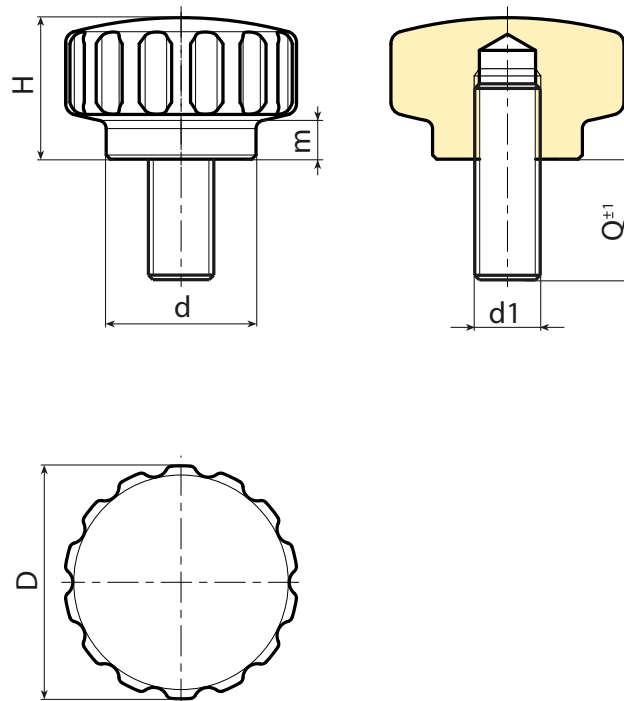
ATTENTION: The stud is fixed with glue.

Special requests:

- Upon request and for a minimum of 50 pieces inserts can be supplied with customised lengths.



08



| Code | Art. | D | H | d | m | d1 _{6H} | Q | g |
|--------------|---------------|----|----|----|-----|------------------|----|---|
| W460020.0001 | H18015.BM0501 | 20 | 13 | 14 | 4,5 | M5 | 20 | 3 |
| W460024.0002 | H18015.BM0501 | 24 | 15 | 16 | 4,5 | M6 | 20 | 3 |
| W460028.0001 | H18015.BM0501 | 28 | 17 | 18 | 4,5 | M8 | 30 | 3 |

Customised stud length available for a minimum of 50 pieces.



W464



C40

Aisi 303



KNURLED METAL HANDWHEEL WITH THREADED STUD

Materials:

W464:

Steel with strength class 5.8.

W464CIN:

Stainless steel (Aisi 303).

Surface finish:

Turned with low roughness.

Colour:

W464:

Nickel plated (galvanic treatment).

W464 CIN:

Natural.

Alternative finishes:

Black-oxide treatment:

(replace the final letter of the code (H) with letter B (W46429.SM08X..B).

Galvanising:

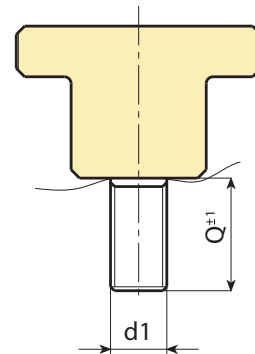
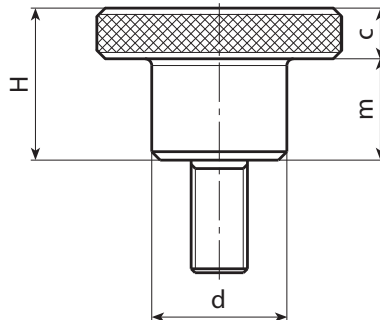
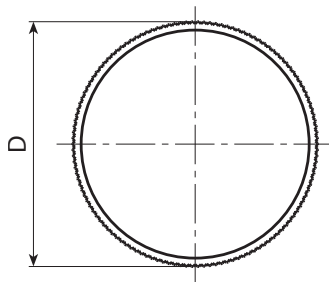
(replace the final letter of the code (H) with letter Z (W46429.SM08X..Z).

Stud:

Threaded stud machined from solid metal (thread tolerance 6g).

Special requests:

- Upon request and for special quantities inserts can be supplied with customised lengths.



Version W464 - nickel-plated steel

| Code | Art. | d | D | H | m | c | Q Max | d1 _{6g} | Q | |
|-------------|---------------|----|----|----|----|---|-------|------------------|----|-------|
| W46411.0006 | H18015.BM0501 | 6 | 11 | 8 | 5 | 3 | 16 | M3 | 16 | 5 |
| W46415.0002 | H18015.BM0501 | 8 | 15 | 10 | 6 | 4 | 20 | M4 | 10 | 7.8 |
| W46419.0005 | H18015.BM0501 | 10 | 19 | 12 | 8 | 4 | 20 | M5 | 16 | 15,6 |
| W46419.0009 | H18015.BM0501 | 10 | 19 | 12 | 8 | 4 | 20 | M5 | 30 | 17 |
| W46423.0005 | H18015.BM0501 | 12 | 23 | 15 | 10 | 5 | 30 | M6 | 16 | 27,5 |
| W46423.0010 | H18015.BM0501 | 12 | 23 | 15 | 10 | 5 | 30 | M6 | 35 | 30,5 |
| W46429.0004 | H18015.BM0501 | 16 | 29 | 18 | 12 | 6 | 40 | M8 | 16 | 55 |
| W46429.0007 | H18015.BM0501 | 16 | 29 | 18 | 12 | 6 | 40 | M8 | 30 | 59 |
| W46435.0004 | H18015.BM0501 | 20 | 35 | 23 | 15 | 8 | 40 | M10 | 25 | 109.5 |

Customised stud length available for a minimum of 100 pieces.
Q_{max} = maximum turning length.

Version W464 CIN - stainless steel (Aisi 303)

| Code | Art. | d | D | H | m | c | Q MAX | d1 _{6g} | Q | |
|-------------|---------------|----|----|----|----|---|-------|------------------|----|------|
| W46423.0002 | H18015.BM0501 | 12 | 23 | 15 | 10 | 5 | 30 | M6 | 35 | 30.5 |

Customised stud length available for a minimum of 100 pieces.
Q_{max} = maximum turning length.



W466



C40

Aisi 303



KNURLED METAL HANDWHEEL WITH THREADED HOLE

Materials:

W466:

Steel with strength class 5.8.

W466 PIN:

Stainless steel (Aisi 303).

Surface finish:

Turned with low roughness.

Colour:

W466:

Nickel plated (galvanic treatment).

W466PIN:

Natural.

Alternative finishes:

Black-oxide treatment:

(replace the final letter of the code (H) with letter B (W46629.SM08B).

Galvanising:

(replace the final letter of the code (H) with letter Z (W46629.SM08Z).

Hole:

Threaded through hole machined from solid metal (thread tolerance 6H).

Special requests:

- Upon request and for special quantities inserts can be supplied to customer's drawing with hole diameter d1.



08



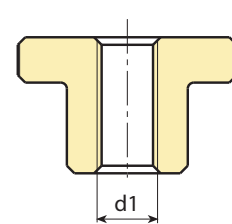
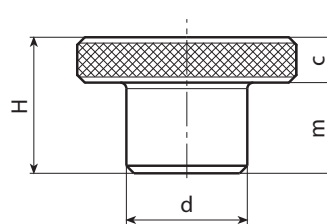
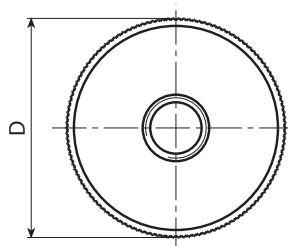
ST. STEEL



Galvanised ver.



Black-oxide treated ver.



Version W466 - nickel-plated steel

| Code | Art. | d | D | H | m | c | d1 _{6H} | g |
|---------------|---------------|----|----|----|----|----|------------------|------|
| H18015.BM0501 | H18015.BM0501 | 6 | 11 | 8 | 5 | 3 | M3 | 3 |
| H18015.BM0501 | H18015.BM0501 | 8 | 15 | 10 | 6 | 4 | M4 | 7 |
| H18015.BM0501 | H18015.BM0501 | 10 | 19 | 12 | 8 | 4 | M5 | 12 |
| H18015.BM0501 | H18015.BM0501 | 12 | 23 | 15 | 10 | 5 | M6 | 22.5 |
| H18015.BM0501 | H18015.BM0501 | 16 | 29 | 18 | 12 | 6 | M8 | 45 |
| H18015.BM0501 | H18015.BM0501 | 20 | 35 | 23 | 15 | 8 | M10 | 87 |
| H18015.BM0501 | H18015.BM0501 | 22 | 39 | 25 | 15 | 10 | M12 | 121 |

Version W466 PIN - stainless steel (Aisi 303)



W467



C40

Aisi 303



KNURLED METAL HANDWHEEL WITH SHORT HUB AND THREADED HOLE

Materials:

W467:

Steel with strength class 5.8.

W467 PIN:

Stainless steel (Aisi 303).

Surface finish:

Turned with low roughness.

Colour:

W467:

Nickel plated (galvanic treatment).

W467 PIN:

Natural.

Alternative finishes:

Black-oxide treatment:

(replace the final letter of the code (H) with letter B (W46729. SM08B).

Galvanising:

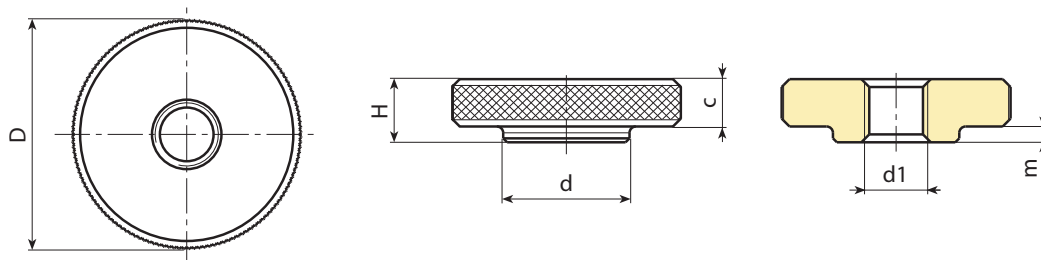
(replace the final letter of the code (H) with letter Z (W46729. SM08Z).

Hole:

Threaded through hole machined from solid metal (thread tolerance 6H).

Special requests:

- Upon request and for special quantities inserts can be supplied to customer's drawing with hole diameter d1.



Version W467 - nickel-plated steel

| Code | Art. | d | D | H | m | c | d1 _{6H} | |
|---------------|---------------|----|----|----|---|----|------------------|----|
| H18015.BM0501 | H18015.BM0501 | 6 | 11 | 3 | - | 3 | M3 | 2 |
| H18015.BM0501 | H18015.BM0501 | 8 | 15 | 4 | - | 4 | M4 | 5 |
| H18015.BM0501 | H18015.BM0501 | 10 | 19 | 5 | 1 | 4 | M5 | 9 |
| H18015.BM0501 | H18015.BM0501 | 12 | 23 | 6 | 1 | 5 | M6 | 16 |
| H18015.BM0501 | H18015.BM0501 | 16 | 29 | 8 | 2 | 6 | M8 | 32 |
| H18015.BM0501 | H18015.BM0501 | 20 | 35 | 10 | 2 | 8 | M10 | 61 |
| H18015.BM0501 | H18015.BM0501 | 22 | 39 | 12 | 2 | 10 | M12 | 92 |

Version W467 PIN - stainless steel (Aisi 303)

INOX

| Code | Art. | d | D | H | m | c | d1 _{6H} | |
|---------------|---------------|---|----|---|---|---|------------------|---|
| H18015.BM0501 | H18015.BM0501 | 6 | 11 | 3 | - | 3 | M3 | 2 |
| H18015.BM0501 | H18015.BM0501 | 8 | 15 | 4 | - | 4 | M4 | 5 |

Y303



DIN 6303 - KNURLED THUMB KNOB WITH THREADED HOLE

Materials:

Y303:

Free-cutting steel.

Y303PIN:

Stainless steel (Aisi 303).

Surface finish:

Smooth, turned.

Colour:

Y303:

Black-oxide treatment.

Y303PIN:

Natural.

Hole:

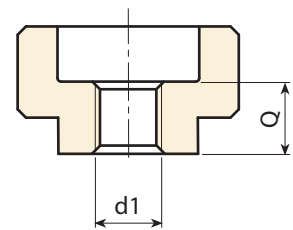
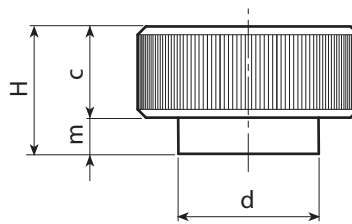
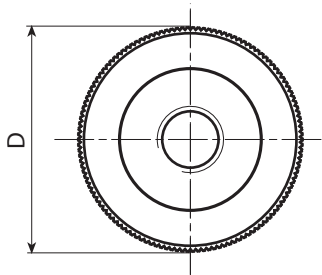
Threaded through hole (thread tolerance 6H).

Special requests:

- None.



08



Version Y303: black-oxide treated steel

| Code | Art. | D | d | H | m | c | d _{16H} | Q | |
|---------------|---------------|----|----|----|---|----|------------------|----|-----|
| H18015.BM0501 | H18015.BM0501 | 20 | 14 | 12 | 4 | 8 | M5 | 7 | 17 |
| H18015.BM0501 | H18015.BM0501 | 24 | 16 | 14 | 4 | 10 | M6 | 8 | 30 |
| H18015.BM0501 | H18015.BM0501 | 30 | 20 | 17 | 5 | 12 | M8 | 10 | 50 |
| H18015.BM0501 | H18015.BM0501 | 36 | 28 | 20 | 6 | 14 | M10 | 12 | 90 |
| H18015.BM0501 | H18015.BM0501 | 40 | 32 | 24 | 8 | 16 | M12 | 16 | 124 |

Version Y303 PIN: stainless steel (Aisi 303)

INOX

| Code | Art. | D | d | H | m | c | d _{16H} | Q | |
|---------------|---------------|----|----|----|---|----|------------------|----|-----|
| H18015.BM0501 | H18015.BM0501 | 20 | 14 | 12 | 4 | 8 | M5 | 7 | 17 |
| H18015.BM0501 | H18015.BM0501 | 24 | 16 | 14 | 4 | 10 | M6 | 8 | 30 |
| H18015.BM0501 | H18015.BM0501 | 30 | 20 | 17 | 5 | 12 | M8 | 10 | 50 |
| H18015.BM0501 | H18015.BM0501 | 36 | 28 | 20 | 6 | 14 | M10 | 12 | 90 |
| H18015.BM0501 | H18015.BM0501 | 40 | 32 | 24 | 8 | 16 | M12 | 16 | 124 |

Y653



AVP

Aisi 303



DIN 653 - FULL STEEL DIAMOND KNURLED THUMB SCREW WITH THREADED DOME-END STUD

Materials:

Y653:
Free-cutting steel.
Y653 CIN:
Stainless steel (Aisi 303).

Surface finish:

Smooth, turned.

Colour:

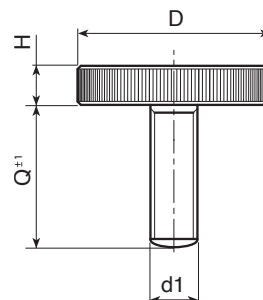
Y653:
Black-oxide treatment.
Y653 CIN:
Natural.

Stud:

Threaded stud with dome end (thread tolerance 6g).

Special requests:

- None.



08

Version Y653CIN - stainless steel (Aisi 303)

INOX

| Code | art. | D | H | d1 _{6g} | Q | g |
|--------------|---------------|----|-----|------------------|----|----|
| Y653012.0001 | H18015.BM0501 | 12 | 2,5 | M3 | 06 | 3 |
| Y653012.0002 | H18015.BM0501 | 12 | 2,5 | M3 | 10 | 3 |
| Y653016.0001 | H18015.BM0501 | 16 | 3,5 | M4 | 10 | 6 |
| Y653016.0002 | H18015.BM0501 | 16 | 3,5 | M4 | 16 | 7 |
| Y653020.0001 | H18015.BM0501 | 20 | 4 | M5 | 10 | 11 |
| Y653020.0002 | H18015.BM0501 | 20 | 4 | M5 | 16 | 12 |
| Y653020.0003 | H18015.BM0501 | 20 | 4 | M5 | 25 | 14 |
| Y653024.0001 | H18015.BM0501 | 24 | 5 | M6 | 12 | 20 |
| Y653024.0002 | H18015.BM0501 | 24 | 5 | M6 | 16 | 21 |
| Y653024.0003 | H18015.BM0501 | 24 | 5 | M6 | 25 | 23 |
| Y653024.0004 | H18015.BM0501 | 24 | 5 | M6 | 30 | 24 |
| Y653024.0005 | H18015.BM0501 | 24 | 5 | M6 | 35 | 25 |
| Y653030.0001 | H18015.BM0501 | 30 | 6 | M8 | 16 | 37 |
| Y653030.0002 | H18015.BM0501 | 30 | 6 | M8 | 20 | 39 |
| Y653030.0003 | H18015.BM0501 | 30 | 6 | M8 | 25 | 40 |
| Y653030.0004 | H18015.BM0501 | 30 | 6 | M8 | 35 | 43 |
| Y653030.0005 | H18015.BM0501 | 30 | 6 | M8 | 40 | 48 |
| Y653036.0001 | H18015.BM0501 | 36 | 8 | M10 | 20 | 72 |
| Y653036.0002 | H18015.BM0501 | 36 | 8 | M10 | 30 | 76 |
| Y653036.0003 | H18015.BM0501 | 36 | 8 | M10 | 40 | 80 |

Version Y653: black-oxide treated steel

| Code | art. | D | H | d1 _{6g} | Q | g |
|--------------|---------------|----|-----|------------------|----|----|
| Y653012.0004 | H18015.BM0501 | 12 | 2,5 | M3 | 06 | 3 |
| Y653012.0005 | H18015.BM0501 | 12 | 2,5 | M3 | 10 | 3 |
| Y653016.0003 | H18015.BM0501 | 16 | 3,5 | M4 | 10 | 6 |
| Y653016.0004 | H18015.BM0501 | 16 | 3,5 | M4 | 16 | 7 |
| Y653020.0004 | H18015.BM0501 | 20 | 4 | M5 | 10 | 11 |
| Y653020.0005 | H18015.BM0501 | 20 | 4 | M5 | 16 | 12 |
| Y653020.0006 | H18015.BM0501 | 20 | 4 | M5 | 25 | 14 |
| Y653024.0007 | H18015.BM0501 | 24 | 5 | M6 | 12 | 20 |
| Y653024.0008 | H18015.BM0501 | 24 | 5 | M6 | 16 | 21 |
| Y653024.0009 | H18015.BM0501 | 24 | 5 | M6 | 25 | 23 |
| Y653024.0010 | H18015.BM0501 | 24 | 5 | M6 | 30 | 24 |
| Y653024.0011 | H18015.BM0501 | 24 | 5 | M6 | 35 | 25 |
| Y653030.0006 | H18015.BM0501 | 30 | 6 | M8 | 16 | 37 |
| Y653030.0007 | H18015.BM0501 | 30 | 6 | M8 | 20 | 39 |
| Y653030.0008 | H18015.BM0501 | 30 | 6 | M8 | 25 | 40 |
| Y653030.0009 | H18015.BM0501 | 30 | 6 | M8 | 35 | 43 |
| Y653030.0010 | H18015.BM0501 | 30 | 6 | M8 | 40 | 48 |
| Y653036.0004 | H18015.BM0501 | 36 | 8 | M10 | 20 | 72 |
| Y653036.0005 | H18015.BM0501 | 36 | 8 | M10 | 30 | 76 |