

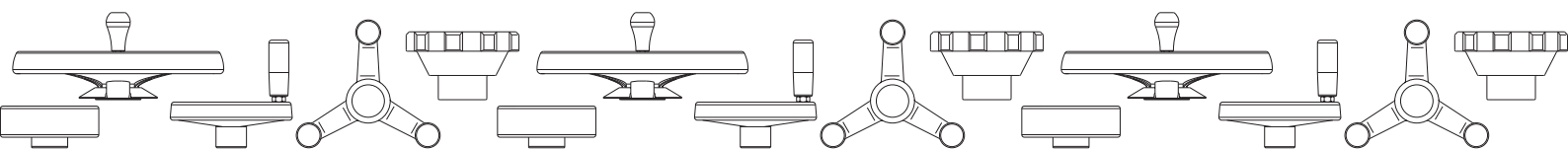


GROUP - 04

CONTROL HANDWHEELS

BOTECO Control Handwheels

From tapered handwheels to control handwheels for compatible cabinets, Boteco offers various solutions for specific applications. Simply download the detailed technical sheets for further information on the control elements that we design and manufacture: plastic and metal spoke handwheels and three-arm handwheels that ensure a high level of reliability. For these products we can offer customized holes and additional re-machining, such as side holes and pinning holes.



D205



TWO-SPOKE CONTROL HANDWHEEL

Materials:

Reinforced and stabilized polyamide.
Resistant to oils and greases.

Surface finish:

Satin.

Colour:

Black (RAL 9011).

Central cap:

Grey polyamide (RAL 7035). 13).

Alternative cap colours:

Orange (RAL 2004 code 02).
Blue (RAL 5015 code 07).
Yellow (RAL 1021 code 10).
Red (RAL 3000 code 16).
Green (RAL 6024 code 17).
Black (RAL 9011 code 01).

Main insert:

Galvanised steel insert with smooth through bore
(tolerance H10).

Hub:

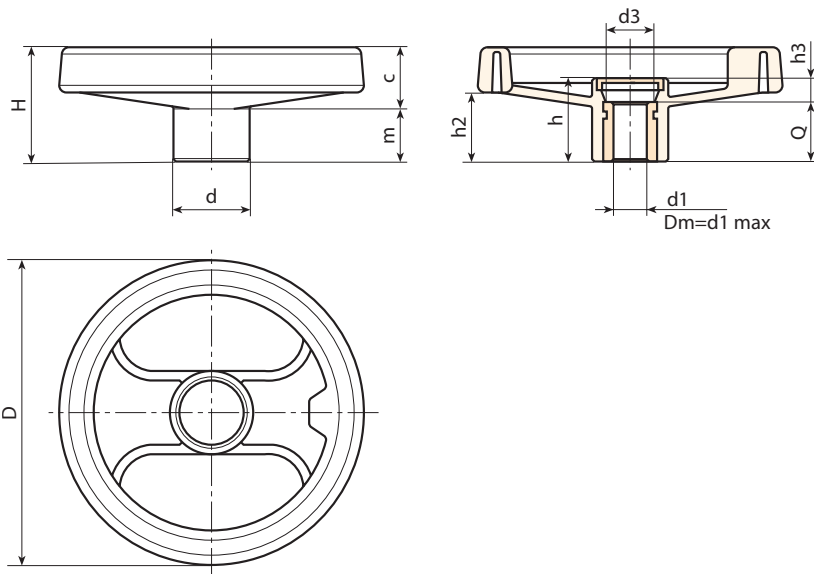
Solid Hub.
(*) Lightweight hub.

Fixing method:

For fixing systems, or execution of keyways or square holes, please refer to the technical notes attached to the catalogue [page 966].

Special requests:

- Upon request and for a minimum of 50 pieces inserts can be supplied with hole d1 with tolerance H7 and black oxide treated finish. Add letters ZB to the standard code. Example: D205130.TD1001PZB.
- Upon request and for special quantities inserts can be supplied with custom hole diameter d1.
- Upon request and for special quantities inserts can be supplied in different materials/with different coatings.
- Upon request and for special quantities the spoke handwheels are available in the colours indicated in the chart (reduced range) [page 959].



Code	Art.	D	H	h	d	m	c	h2	h3	d3	Dm	d1 _{H10}	Q	
D205080.0014	D205080.TP0501P	80	34	26	24,5	15,5	18,5	20	6	16,5	12	5	20	94
D205100.0020	D205100.TP0501P	99	43	33	28	19,5	23,5	27	9	17	16	5	24	152
D205130.0038	D205130.TP0501P	129	50	35,5	32	20	30	30	11,5	25,5	18	5	24	230
D205130.0009	D205130.TD1201P	129	50	35,5	32	20	30	30	11,5	25,5	18	12	24	205
D205160.0003	D205160.TD0801P	160	57,5	41	40	20	37,5	34	9	26	22	8	32	390
D205160.0013	D205160.TD1401P	160	57,5	41	40	20	37,5	34	9	26	22	14	32	370
D205160.0020	D205160.TD1601P	160	57,5	41	40	20	37,5	34	9	26	22	16	32	360
D205200.0002	D205200.TD0801P	198	61	39,5	51	17	44	32	7,5	27	22	8	32	630
D205200.0004	D205200.TD1001P	198	61	39,5	51	17	44	32	7,5	27	22	10	32	620
D205200.0006	D205200.TD1201P	198	61	39,5	51	17	44	32	7,5	27	22	12	32	626
D205200.0021	D205200.TD2001P	198	61	39,5	51	17	44	32	7,5	27	22	20	32	615
D205250.0001	D205250.TD0801P	252	70	48	56	23	47	38,5	12	31,5	28	8	36	990
D205250.0003	D205250.TD1201P	252	70	48	56	23	47	38,5	12	31,5	28	12	36	970
D205350.0001	D205350.TD0801P	349	80	50	67	21,5	58,5	43,5	18	35	30	(*)8	32	1490

Attention: For a minimum of 50 pieces the diameter d1 can be customised (hole tolerance H10 galvanised and H7 black-oxide treated).
Dm = Maximum obtainable diameter for subsequent machining (widening).



D206



TWO-SPOKE CONTROL HANDWHEEL WITH REVOLVING HANDLE

Materials:

Reinforced and stabilized polyamide. Resistant to oils and greases.

Surface finish: Satin.

Colour: Black (RAL 9011).

Central cap:

Grey polyamide (RAL 7035). 13).

Alternative cap colours:

Orange (RAL 2004 code 02).
 Blue (RAL 5015 code 07).
 Yellow (RAL 1021 code 10).
 Red (RAL 3000 code 16).
 Green (RAL 6024 code 17).
 Black (RAL 9011 code 01).

Main insert:

Galvanised steel insert with smooth through bore (tolerance H10).

Lateral insert:

Brass insert with threaded through hole.

Lateral handle:

D206: Revolving handle art. M144 (page 504).
 D209: Revolving handle art. M145 (page 509).
 D210: Revolving handle art. M129 (page 505).
 D211: Revolving handle art. M202 (page 513).

Hub:

Solid Hub.

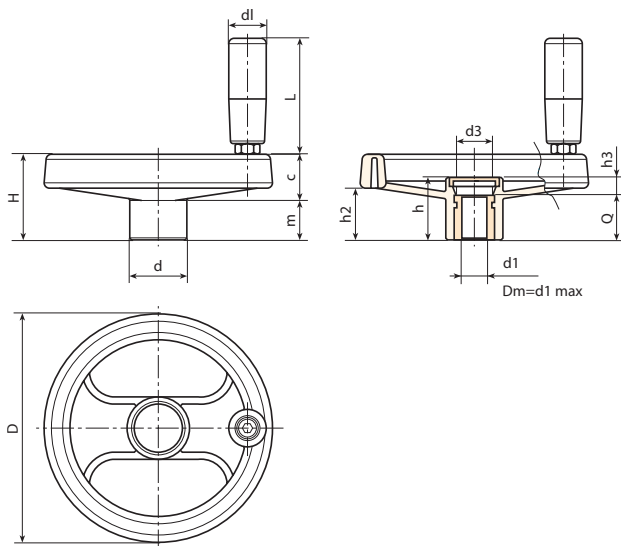
(*) Lightweight hub.

Fixing method:

For fixing systems, or execution of keyways or square holes, please refer to the technical notes attached to the catalogue [page 966].

Special requests:

- Upon request and for a minimum of 50 pieces inserts can be supplied with hole d1 with tolerance H7 and black oxide treated finish. Add letters ZB to the standard code. Example: D206130.TD1001PZB.
- Upon request and for special quantities inserts can be supplied with custom hole diameter d1.
- Upon request and for special quantities inserts can be supplied in different materials/with different coatings.
- Upon request and for special quantities spoke handwheels, handles and caps are available in the colours indicated in the chart (reduced range) [page 959].



Code	Art.	D	H	h	d	m	c	h2	h3	d3	dl	L	Dm	d1 _{H10}	Q	g
D206080.0014	D206080.TP0501P	80	34	26	24,5	15,5	18,5	20	6	16,5	19	54	12	10	20	113
D206080.0002	D206080.TD0801P	80	34	26	24,5	15,5	18,5	20	6	16,5	19	54	12	5	20	115
D206080.0006	D206080.TD1001P	80	34	26	24,5	15,5	18,5	20	6	16,5	19	54	12	10	20	110
D206100.0021	D206100.TP0501P	99	43	33	28	19,5	23,5	27	9	17	19	54	16	5	24	182
D206100.0003	D206100.TD0801P	99	43	33	28	19,5	23,5	27	9	17	19	54	16	8	24	176
D206100.0009	D206100.TD1001P	99	43	33	28	19,5	23,5	27	9	17	19	54	16	10	24	160
D206100.0011	D206100.TD1201P	99	43	33	28	19,5	23,5	27	9	17	19	54	16	12	24	177
D206130.0046	D206130.TP0501P	129	50	35,5	32	20	30	30	11,5	25,5	21	65,5	18	5	24	285
D206130.0004	D206130.TD0801P	129	50	35,5	32	20	30	30	11,5	25,5	21	65,5	18	8	24	293
D206130.0008	D206130.TD1001P	129	50	35,5	32	20	30	30	11,5	25,5	21	65,5	18	10	24	290
D206130.0014	D206130.TD1201P	129	50	35,5	32	20	30	30	11,5	25,5	21	65,5	18	12	24	280
D206160.0007	D206160.TD0801P	160	57,5	41	40	20	37,5	34	9	26	23,5	75	22	8	32	440
D206160.0019	D206160.TD1401P	160	57,5	41	40	20	37,5	34	9	26	23,5	75	22	14	32	430
D206160.0043	D206160.TD2001P	160	57,5	41	40	20	37,5	34	9	26	23,5	75	22	20	32	375
D206200.0002	D206200.TD0801P	198	61,5	39,5	51	17	44	32	7,5	27	23,5	75	22	8	32	685
D206200.0012	D206200.TD1601P	198	61,5	39,5	51	17	44	32	7,5	27	23,5	75	22	16	32	640
D206200.0020	D206200.TD2001P	198	61,5	39,5	51	17	44	32	7,5	27	23,5	75	22	20	32	685
D206250.0007	D206250.TD0801P	252	70	47	56	23	47	38,5	12	31,5	25,5	87	28	8	36	1100
D206250.0022	D206250.TD2001P	252	70	47	56	23	47	38,5	12	31,5	25,5	87	28	20	36	1015
D206350.0002	D206350.TD0801P	349	80	50	67	21,5	58,5	43,5	18	35	26,5	97,5	30	(*)8	32	1650

Attention: For a minimum of 50 pieces the diameter d1 can be customised (hole tolerance H10 galvanised and H7 black-oxide treated).
 Dm = Maximum obtainable diameter for subsequent machining (widening).



D209



TWO-SPOKE CONTROL HANDWHEEL WITH REVOLVING HANDLE M145

Code	Art.	D	H	h	d	m	c	h2	h3	d3	dl	L	Dm	d1 _{H10}	Q	
D209080.0001	D209080.TP0501P	80	34	26	24,5	15,5	18,5	20	6	16,5	20	55,5	12	5	20	126
D209100.0004	D209100.TP0501P	99	43	33	28	19,5	23,5	27	9	17	20	55,5	16	5	24	180
D209130.0001	D209130.TD0501P	129	50	35,5	32	20	30	30	11,5	25,5	23,5	67,5	18	5	24	295
-	D209160.TD0801P	160	57,5	41	40	20	37,5	34	9	26	25	77	22	8	32	460
D209200.0001	D209200.TD0801P	198	61	39,5	51	17	44	32	7,5	27	25	77	22	8	32	700
D209250.0001	D209250.TD0801P	252	70	48	56	23	47	38,5	12	31,5	26	85,5	28	8	36	1100
D209350.0001	D209350.TD0801P	349	80	50	67	21,5	58,5	43	18	35	28	96	30	(*)8	32	1650

Attention: For a minimum of 50 pieces the diameter d1 can be customised (hole tolerance H10 galvanised and H7 black-oxide treated).
Dm = Maximum obtainable diameter for subsequent machining (widening).

04

D210



TWO-SPOKE CONTROL HANDWHEEL WITH REVOLVING HANDLE M129

Code	Art.	D	H	h	d	m	c	h2	h3	d3	dl	L	Dm	d1 _{H10}	Q	
D210080.0002	D210080.TP0501P	80	34	26	24,5	15,5	18,5	20	6	16,5	20	52	12	5	20	130
D210100.0002	D210100.TP0501P	99	43	33	28	19,5	23,5	27	9	17	20	52	16	5	24	185
D210130.0001	D210130.TD0501P	129	50	35,5	32	20	30	30	11,5	25,5	23,5	62,5	18	5	24	280
D210160.0001	D210160.TD0801P	160	57,5	41	40	20	37,5	34	9	26	25	72	22	8	32	455
D210200.0001	D210200.TD0801P	198	61	39,5	51	17	44	32	7,5	27	25	72	22	8	32	700
D210250.0001	D210250.TD0801P	252	70	48	56	23	47	38,5	12	31,5	26	81,5	28	8	36	1050
D210350.0001	D210350.TD0801P	349	80	50	67	21,5	58,5	43	18	35	28	89,5	30	(*)8	32	1600

Attention: For a minimum of 50 pieces the diameter d1 can be customised (hole tolerance H10 galvanised and H7 black-oxide treated).
Dm = Maximum obtainable diameter for subsequent machining (widening).

D211



TWO-SPOKE CONTROL HANDWHEEL WITH REVOLVING HANDLE M202

Code	Art.	D	D2	H	h	d	m	c	h2	h3	d3	dl	L	Dm	d1 _{H10}	Q	
D211250.0001	D211250.TD0801P	252	257	70	48	56	23	47	38,5	12	31,5	40	63,5	28	8	36	1100
D211350.0001	D211350.TD0801P	349	-	80	50	67	21,5	58,5	43	18	35	40	63,5	30	(*)8	32	1630

Attention: For a minimum of 50 pieces the diameter d1 can be customised (hole tolerance H10 galvanised and H7 black-oxide treated).
Dm = Maximum obtainable diameter for subsequent machining (widening).

TWO-SPOKE CONTROL HANDWHEEL BASE WITH PROVISION FOR HANDLE

Materials:

Reinforced and stabilized polyamide. Resistant to oils and greases.

Surface finish:

Satin.

Colour:

Black (RAL 9011).

Central cap:

Grey polyamide (RAL 7035). 13.

Alternative cap colours:

Orange (RAL 2004 code 02).
 Blue (RAL 5015 code 07).
 Yellow (RAL 1021 code 10).
 Red (RAL 3000 code 16).
 Green (RAL 6024 code 17).
 Black (RAL 9011 code 01).

Main insert:

Galvanised steel insert with smooth through bore (tolerance H10).

Lateral insert:

Brass insert with threaded through hole.

Hub:

Solid Hub.

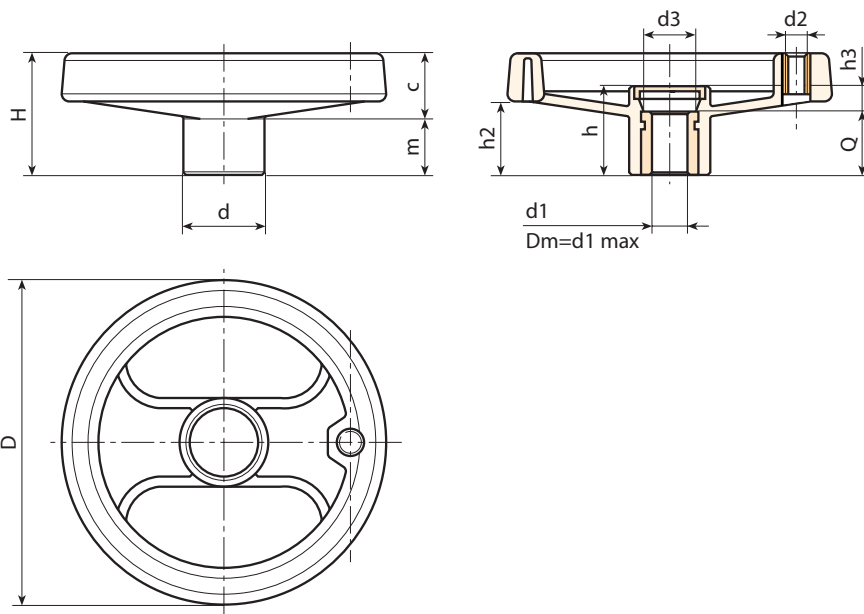
(*) Lightweight hub.

Fixing method:

For fixing systems, or execution of keyways or square holes, please refer to the technical notes attached to the catalogue [page 966].

Special requests:

- Upon request and for a minimum of 50 pieces inserts can be supplied with hole d1 with tolerance H7 and black oxide treated finish. Add letters ZB to the standard code. Example: D130.ZB.TD1001PZB.
- Upon request and for special quantities inserts can be supplied with custom hole diameter d1.
- Upon request and for special quantities inserts can be supplied in different materials/with different coatings.
- Upon request and for special quantities available in the colours indicated in the chart [page 959].



Code	Art.	D	H	h	d	m	c	h2	h3	d3	Dm	d2 _{6H}	d1 _{H10}	Q	
D080.TP0501PZ1	D080.TP0501PZ1	80	34	26	24,5	15,5	18,5	20	6	16,5	12	M6	5	20	90
D100.TP0501PZ1	D100.TP0501PZ1	99	43	33	28	19,5	23,5	27	9	17	16	M6	5	24	150
D130.TP0501PZ1	D130.TP0501PZ1	129	50	35,5	32	20	30	30	11,5	25,5	18	M8	5	24	230
D160.TD0801PZ1	D160.TD0801PZ1	160	57,5	41	40	20	37,5	34	9	26	22	M8	8	32	375
D200.TD0801PZ1	D200.TD0801PZ1	198	61	39,5	51	17	44	32	7,5	27	22	M8	8	32	615
D250.TD0801PZ1	D250.TD0801PZ1	252	70	48	56	23	47	38,5	12	31,5	28	M10	8	36	920
D350.TD0801PZ1	D350.TD0801PZ1	349	80	50	67	21,5	58,5	43,5	18	35	30	M10	(*)8	32	1510

Attention: For a minimum of 50 pieces the diameter d1 can be customised (hole tolerance H10 galvanised and H7 black-oxide treated).

D207



PA6
+G.F.

UL94
HB



TWO-SPOKE CONTROL HANDWHEEL WITH REVOLVING FOLDAWAY HANDLE

Materials:

Reinforced and stabilized polyamide. Resistant to oils and greases.

Surface finish:

Satin.

Colour:

Black (RAL 9011).

Central cap:

Grey polyamide (RAL 7035). 13).

Alternative cap colours:

Orange (RAL 2004 code 02).
Blue (RAL 5015 code 07).
Yellow (RAL 1021 code 10).
Red (RAL 3000 code 16).
Green (RAL 6024 code 17).
Black (RAL 9011 code 01).

Main insert:

Galvanised steel insert with smooth through bore (tolerance H10).

Lateral handle:

Flush, foldaway revolving handle, with hexagonal connection. Reinforced polyamide handle. Black-oxide treated internal mechanism. Fixed with black-oxide treated hexagon socket button head screw ISO 7838.

Hub:

Solid Hub.

Fixing method:

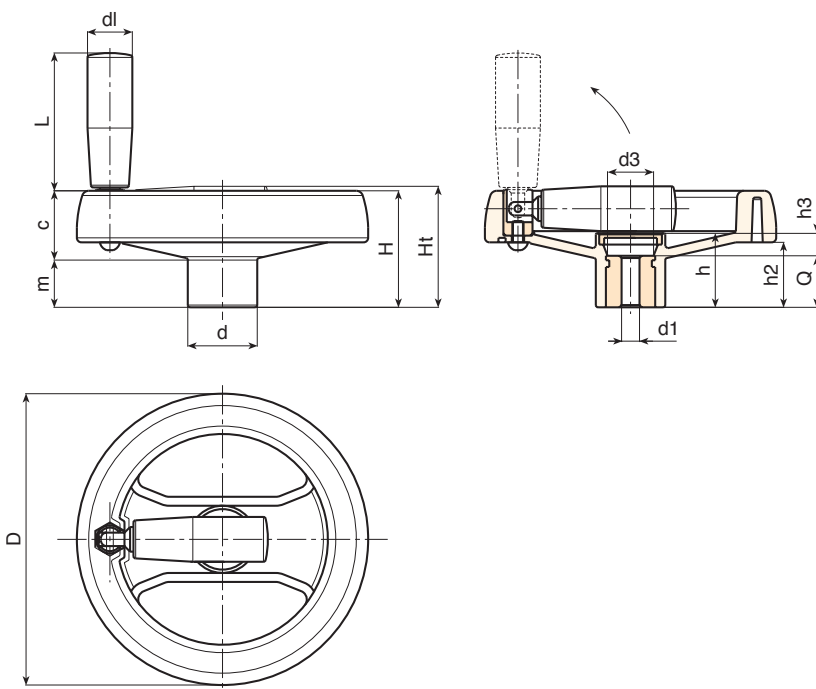
For fixing systems, or execution of keyways or square holes, please refer to the technical notes attached to the catalogue [page 966].

Special requests:

- Upon request and for a minimum of 50 pieces inserts can be supplied with hole d1 with tolerance H7 and black oxide treated finish. Add letters ZB to the standard code. Example: D207130.TD1001PZB.
- Upon request and for special quantities inserts can be supplied with custom hole diameter d1.
- Upon request and for special quantities inserts can be supplied in different materials/with different coatings.
- Upon request and for special quantities spoke handwheels, handles and caps are available in the colours indicated in the chart (reduced range) [page 959].



04



Code	Art.	D	H	Ht	h	d	m	c	h2	h3	d3	d1	L	Dm	d1 _{H10}	Q	g
D207130.0001	D207130.TD0501P	129	53	55	32	32	22	31	30	12	26	20	58	18	5	20	300
D207130.0004	D207130.TD0801P	129	53	55	32	32	22	31	30	12	26	20	58	18	8	20	297
D207130.0016	D207130.TD1201P	129	53	55	32	32	22	31	30	12	26	20	58	18	12	20	294
D207160.0024	D207160.TD0501P	159	55	59	33.5	40	20.5	34.5	31	9.5	26	25	71	22	5	24	450
D207160.0001	D207160.TD0801P	159	55	59	33.5	40	20.5	34.5	31	9.5	26	25	71	22	8	24	447
D207160.0006	D207160.TD1201P	159	55	59	33.5	40	20.5	34.5	31	9.5	26	25	71	22	12	24	443
D207160.0010	D207160.TD1401P	159	55	59	33.5	40	20.5	34.5	31	9.5	26	25	71	22	14	24	440
D207160.0014	D207160.TD1601P	159	55	59	33.5	40	20.5	34.5	31	9.5	26	25	71	22	16	24	436
D207350.0001	D207350.TD0801P	346	80	86	49.5	67.5	24	56	43.5	17.5	35	40	64	30	8	32	1650

Attention: For a minimum of 50 pieces the diameter d1 can be customised (hole tolerance H10 galvanised and H7 black-oxide treated). Dm = Maximum obtainable diameter for subsequent machining (widening).



D207200

"EUROMODEL" TWO-SPOKE CONTROL HANDWHEEL WITH REVOLVING FOLDAWAY HANDLE

+135°
-30°

PA6
+G.F.

UL94
HB

RoHS
COMPLIANT

MODELLO
DEPOSITATO

Materials:

Reinforced and stabilized polyamide.
Resistant to oils and greases.

Surface finish:

Satin.

Colour:

Black (RAL 9011).

Central cap:

Grey polyamide (RAL 7035). 13.

Alternative cap colours:

Orange (RAL 2004 code 02).
Blue (RAL 5015 code 07).
Yellow (RAL 1021 code 10).
Red (RAL 3000 code 16).
Green (RAL 6024 code 17).
Black (RAL 9011 code 01).

Main insert:

Galvanised steel insert with smooth through bore (tolerance H10).

Lateral handle:

Flush, foldaway revolving handle, with hexagonal connection. Reinforced polyamide handle. Black-oxide treated internal mechanism. Fixed with black-oxide treated hexagon socket button head screw ISO 7838.

Hub:

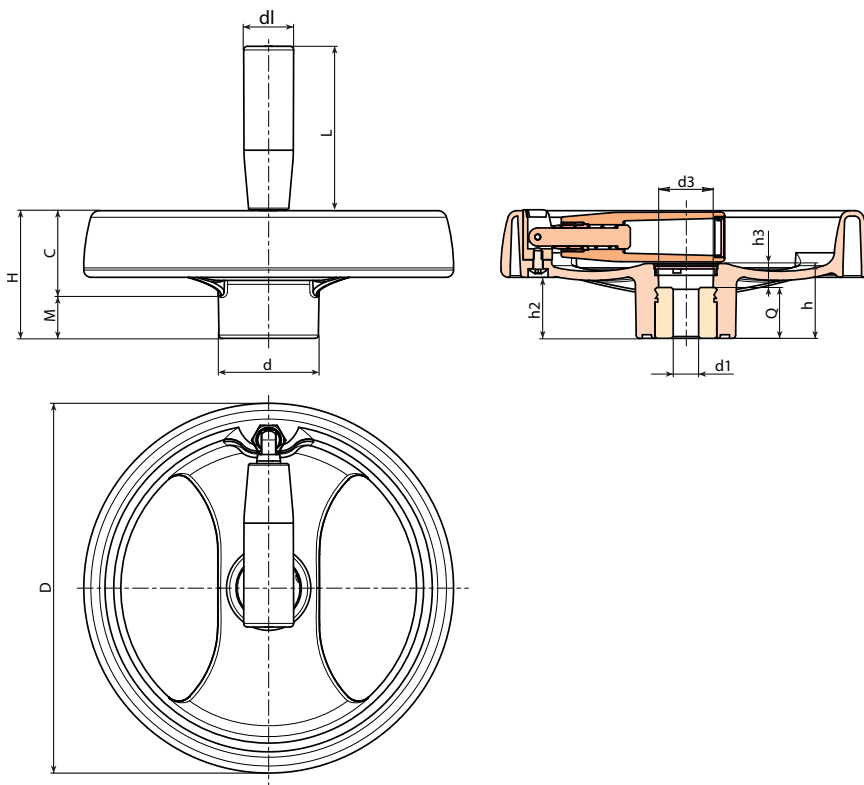
Solid Hub.

Fixing method:

For fixing systems, or execution of keyways or square holes, please refer to the technical notes attached to the catalogue [page 966].

Special requests:

- Upon request and for a minimum of 50 pieces inserts can be supplied with hole d_1 with tolerance H7 and black oxide treated finish. Add letters ZB to the standard code. Example: D207200.TD1801PZB.
- Upon request and for special quantities inserts can be supplied with custom hole diameter d_1 .
- Upon request and for special quantities inserts can be supplied in different materials/with different coatings.
- Upon request and for special quantities spoke handwheels, handles and caps are available in the colours indicated in the chart (reduced range) [page 959].



Code	Art.	D	H	h	d	m	c	h3	d3	dl	L	Dm	d1 _{H10}	Q	g
D207200.0001	D207200.TD0801P	200	69	41	54	23	46	13	30	27	91	24	8	28	660

Attention: For a minimum of 50 pieces the diameter d_1 can be customised (hole tolerance H10 galvanised and H7 black-oxide treated).
Dm = Maximum obtainable diameter for subsequent machining (widening).

D208



PA6
+G.F.

UL94
HB



TWO-SPOKE CONTROL HANDWHEEL WITH REVOLVING FOLDING HANDLE

Materials:

Reinforced and stabilized polyamide. Resistant to oils and greases.

Surface finish: Satin.

Colour: Black (RAL 9011).

Central cap:

Grey polyamide (RAL 7035). 13).

Alternative cap colours:

Orange (RAL 2004 code 02).
Blue (RAL 5015 code 07).
Yellow (RAL 1021 code 10).
Red (RAL 3000 code 16).
Green (RAL 6024 code 17).
Black (RAL 9011 code 01).

Main insert:

Galvanised steel insert with smooth through bore (tolerance H10).

Lateral insert:

Brass insert with threaded through hole.

(+) Hexagonal black-oxide treated steel insert with threaded through hole.
Fixed with black-oxide treated hexagon socket button head screw ISO 7838.

Lateral handle:

Revolving, folding handle art. M136 [page 510].

Hub:

Solid Hub.

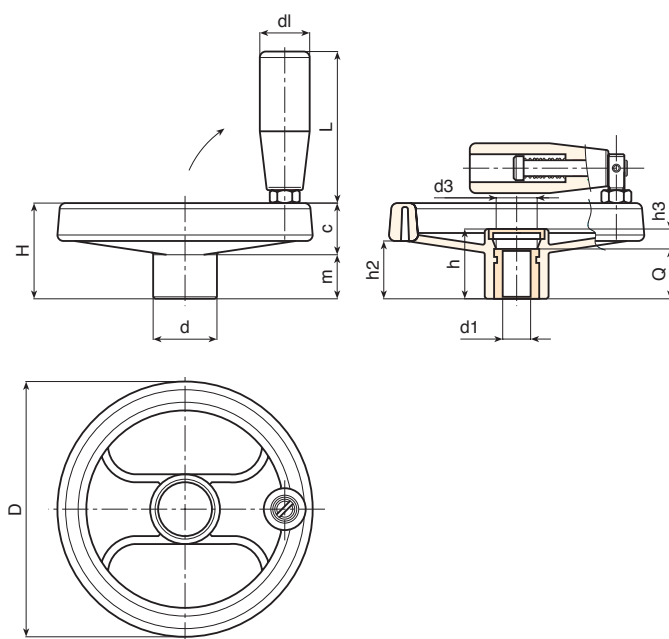
(*) Lightweight hub.

Fixing method:

For fixing systems, or execution of keyways or square holes, please refer to the technical notes attached to the catalogue [page 966].

Special requests:

- Upon request and for a minimum of 50 pieces inserts can be supplied with hole d1 and tolerance H7 and black oxide treated finish. Add letters ZB to the standard code. Example: D208160.TD1501PZB.
- Upon request and for special quantities inserts can be supplied with custom hole diameter d1.
- Upon request and for special quantities inserts can be supplied in different materials/with different coatings.
- Upon request and for special quantities spoke handwheels, handles and caps are available in the colours indicated in the chart (reduced range) [page 959].



Code	Art.	D	H	h	d	m	c	h2	h3	d3	dl	L	Dm	d1H10	Q	g
D208080.0008	D208080.TP0501P	80	34	26	24.5	16	18	20	6	16	20	56	12	5	20	135
D208080.0003	D208080.TD0801P	80	34	26	24.5	16	18	20	6	16	20	56	12	8	20	132
D208080.0005	D208080.TD1001P	80	34	26	24.5	16	18	20	6	16	20	56	12	10	20	129
D208100.0010	D208100.TP0501P	99	43	33	28	20	23	26.5	9	16	20	56	16	5	24	192
D208100.0001	D208100.TD0801P	99	43	33	28	20	23	26.5	9	16	20	56	16	8	24	189
D208100.0003	D208100.TD1001P	99	43	33	28	20	23	26.5	9	16	20	56	16	10	24	186
D208100.0004	D208100.TD1201P	99	43	33	28	20	23	26.5	9	16	20	56	16	12	24	183
-	D208130.TD0501P	129	50	36	32	21	29	32	12	26	25	76	18	5	24	311
D208130.0002	D208130.TD0801P	129	50	36	32	21	29	32	12	26	25	76	18	8	24	308
D208130.0003	D208130.TD1001P	129	50	36	32	21	29	32	12	26	25	76	18	10	24	305
D208130.0004	D208130.TD1201P	129	50	36	32	21	29	32	12	26	25	76	18	12	24	302
D208160.0001	D208160.TD0801P	159	57	40.5	40	22	35	34	8.5	26	25	76	22	8	32	460
D208160.0006	D208160.TD1401P	159	57	40.5	40	22	35	34	8.5	26	25	76	22	14	32	452
D208160.0010	D208160.TD2001P	159	57	40.5	40	22	35	34	8.5	26	25	76	22	20	32	448
D208200.0001	D208200.TD0801P	198	61.5	39.5	51	17.5	44	33	7.5	26	25	76	22	(*)8	32	704
D208200.0003	D208200.TD1601P	198	61.5	39.5	51	17.5	44	33	7.5	26	25	76	22	(*)16	32	694
D208200.0008	D208200.TD2001P	198	61.5	39.5	51	17.5	44	33	7.5	26	25	76	22	(*)20	32	689
D208250.0002	D208250.TD0801P	252	70	47	55.5	24	46	39	11	24	26	97	28	(*)8	36	1080
D208250.0009	D208250.TD2001P	252	70	47	55.5	24	46	39	11	24	26	97	28	(*)20	36	1065
D208350.0001	D208350.TD0801P	346	80	49.5	67.5	24	56	43.5	17.5	35	26	97	30	(*)(+)8	32	1690

Attention: For a minimum of 50 pieces the diameter d1 can be customised (hole tolerance H10 galvanised and H7 black-oxide treated).
Dm = Maximum obtainable diameter for subsequent machining (widening).



D161



TAPERED HANDWHEEL WITH INSERT AND SMOOTH BORE OR THREADED HOLE

Materials:

Reinforced polyamide. Resistant to oils and greases.

Surface finish:

Satin.

Colour:

Black (RAL 9011).

Main insert:

Version TD:

Galvanised steel insert with blind smooth bore (tolerance H10).

Version TM:

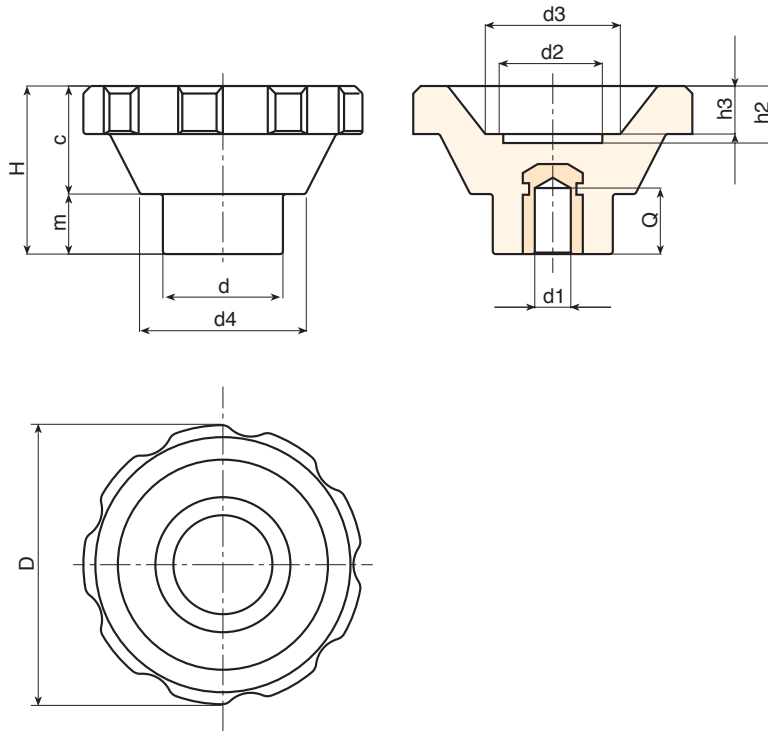
Galvanised steel insert with female threaded hole (tolerance 6H).

Special requests:

- Upon request and for special quantities inserts can be supplied with custom hole diameter d_1 .
- Upon request and for special quantities inserts can be supplied in different materials or finishes.

Fixing method:

For fixing systems, or execution of keyways or square holes, please refer to the technical notes attached to the catalogue [page 966].



Version TD with blind smooth bore.

Code	Art.	D	H	d	c	m	d2	d3	d4	h2	h3	Dm	d1 _{H10}	Q	
D16195.0006	D16195.TD0801	93	56.5	40	36.5	20	32	45	55.5	20	17	22	8	27	340

Attention: For a minimum of 50 pieces the diameter d_1 can be customised (hole tolerance H10 galvanised and H7 black-oxide treated).
Dm = Maximum obtainable diameter for subsequent machining (widening).

Version TM with female threaded hole.

Code	Art.	D	H	d	c	m	d2	d3	d4	h2	h3	d1 _{6H}	Q	
D16195.0019	D16195.TM1201	93	56.5	40	36.5	20	32	45	55.5	20	17	M12	25	338

Attention: for a minimum of 50 pieces the diameter d_1 can be produced with the requested dimensions (tolerance 6H).



DFLAN



LOCKING FLANGE FOR POSITIONING (ACCESSORY FOR ART. D601-D602-D603-D604)

Materials:

Impact resistant polystyrene.

Surface finish:

Smooth.

Colour:

Black (RAL 9011).

Holes:

Holes obtained by moulding the plastic. Holes marked d2 cannot be modified. It is possible to change both the diameter and the positioning of holes marked d1, d3, d4.

Fixing method:

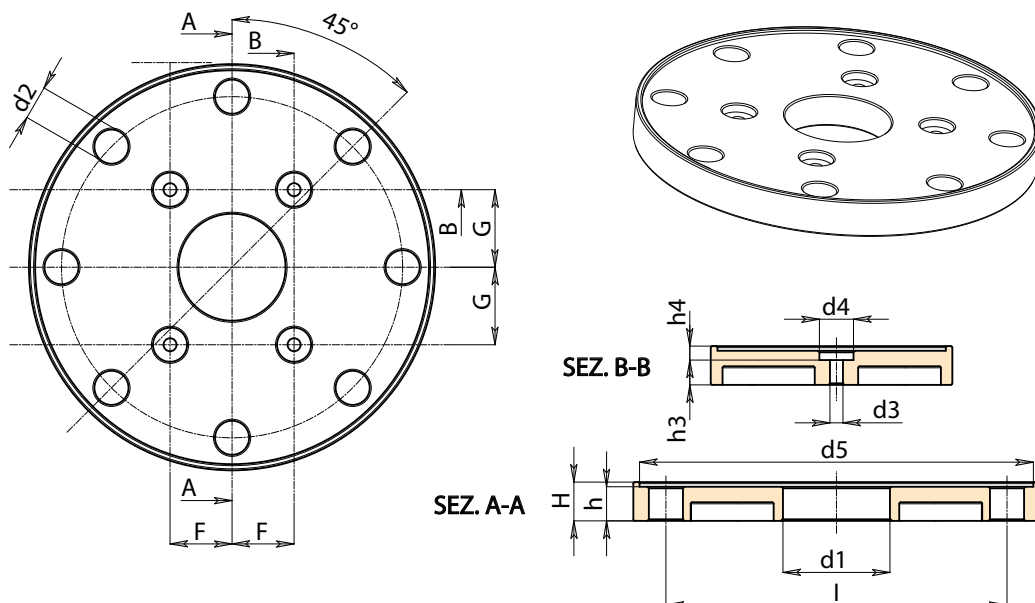
Use the 4 central holes d3. Screws not supplied.

Special requests:

- Upon request and for special quantities, customised position and diameter of holes d1, d3, d4.



04



Code	Art.	D	H	h	h3	h4	I	F	G	d2	d3	d4	d5	d1	
DFLAN.0001	DFLAN.T131X34,5X4,2	131	12.5	11	8	3	110	20	25	11	4.5	11	127	34.5	80
-	DFLAN.T131X.....	131	12.5	11	A.R.	A.R.	110	A.R.	A.R.	11	A.R.	A.R.	127	A.R.	-

A.R. = Upon request.



D610

NEW

+135°
-30°

PA6

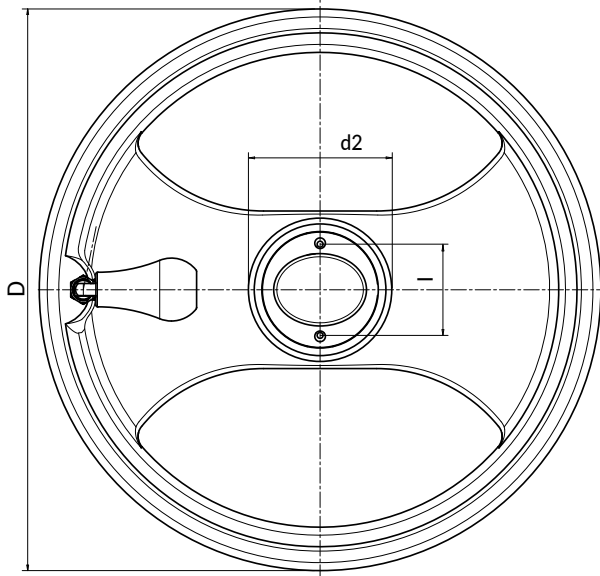
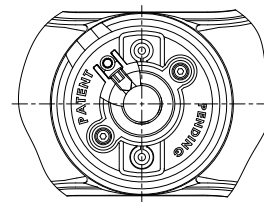
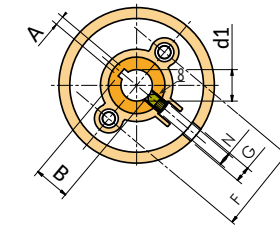
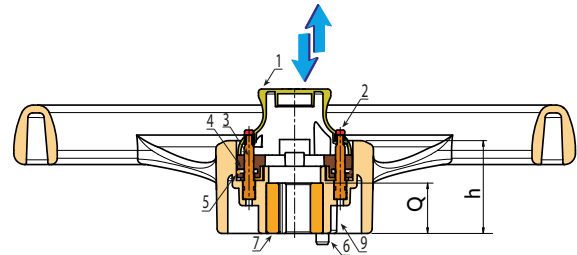
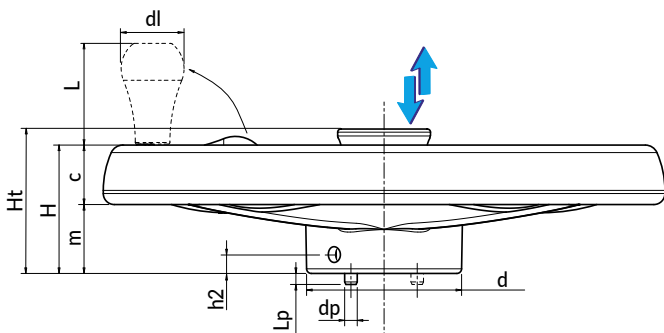
UL94
HB

RoHS
COMPLIANT

EUROMODEL SPOKE HANDWHEEL WITH REVOLVING AND FOLDING HANDLE WITH CENTRAL LOCKING KNOB

BREVETTATO

This product is an evolution of our series D601-D604. It is designed primarily for use in mobile storage cabinets. The handwheel spokes are shaped with a more modern design, typical of our Euromodel line. We have added a central knob controlling a special mechanism that blocks the rotation of the handwheel (and thus of the storage cabinet door on which it is mounted). The locking system blocks any movement in such a way that the handwheel cannot be removed to force the opening of the door. The sliding doors of the storage cabinet may be safely closed, thus preventing any undesired access or accidental movement. The product is covered by two patents (locking mechanism and anti-removal system).



Code	Art.	D	H	Ht	h	m	c	d	dp
D612350.0001	D610350.TD2001H	350	80	92	59	43	37	98	8

D610

NEW



PA6

UL94
HB



BREVETTATO

EUROMODEL SPOKE HANDWHEEL WITH REVOLVING AND FOLDING HANDLE WITH CENTRAL LOCKING KNOB

Materials:

Reinforced and stabilized polyamide. Resistant to oils and greases.

Surface finish:

Satin.

Colour:

Black (RAL 9011).

Inserts:

- (2) Green polyamide button (RAL 6024).
- (3) Grooved sliding guide to position the knob, galvanised steel.
- (4) Connection flange for knob, springs, safety pin, and locking pins. Reinforced and stabilized polyamide.
- (5) Harmonic stainless steel retaining spring (AISI 302).
- (6) Galvanized steel locking pin with hexagonal seat and retractable mechanism to facilitate the insertion of the pin into the hole of the structure.
- (7) Galvanized steel insert with smooth through bore (tolerance H10) and key.
- (8) Fastening thrust pin M8x12, in black-oxide treated steel, with hexagonal seat and fixing cone end (DIN 914 - UNI 5927).
- (9) Galvanized steel pin, connected to the knob through the central flange. Once lowered, the knob moves in front of the handwheel grub screw. This way it is impossible to insert an Allen wrench to loosen the grub screw and remove the handwheel from the cabinet. It is a safety function.

Central knob:

- (1) Central reinforced polyamide knob. Resistant to oils and greases.

Lateral handle:

Flush, foldaway revolving handle in handwheel M202 "Euromodel", with hexagonal connection. PA6+GF handle, black RAL 9011. Black-oxide treated internal mechanism. Fixed with black-oxide treated hexagon socket button head screw ISO 7838. Handle cap in green polyamide (RAL 6023 code 17).

Special requests:

- Upon request and for special quantities inserts can be supplied with custom hole diameter d1.
- Upon request and for special quantities inserts can be supplied in different materials/with different coatings.



04



This product works in a rather simple way: pulling the central knob upwards lifts a connection flange that raises both locking pins. After coming out of the metal plate of the mobile shelf and retracting inside the handwheel, these pins allow the operator to rotate the handwheel and consequently move the entire shelf. When in raised position, the knob hides both side caps covering the top of the guiding pins. When about to reach the desired shelf position, push the knob towards the inside of the handwheel: this action will lower the connection flange, allowing one of the locking pins to protrude thus facilitating the insertion of the pins in the holes of the metal plate. Also, the locking pin features a spring retaining mechanism, so that if the knob is pressed when the pin is not in the correct position yet, the pin will retract smoothly. The spring keeps it pressed, and as soon as the hole aligns with the pin, the spring pushes it in, thus locking the handwheel. In this position, both green buttons come out of the knob, making it easier to identify the correct locking position. The safety pin too follows the connection flange, so it lowers and covers the hole containing the thrust pin that fastens the handwheel to the pin of the shelf. This way it is impossible to insert a tool to loosen the grub screw. This option is only effective if there is a lock that blocks the movement of the knob.

Lp	h2	A	B	I	N	G	F	d2	dl	L	d1H10	Q	g
7	12	6	22,8	58	M8	10	55	78	40	64	20	32	1800

D611

NEW

+135°
-30°

PA6

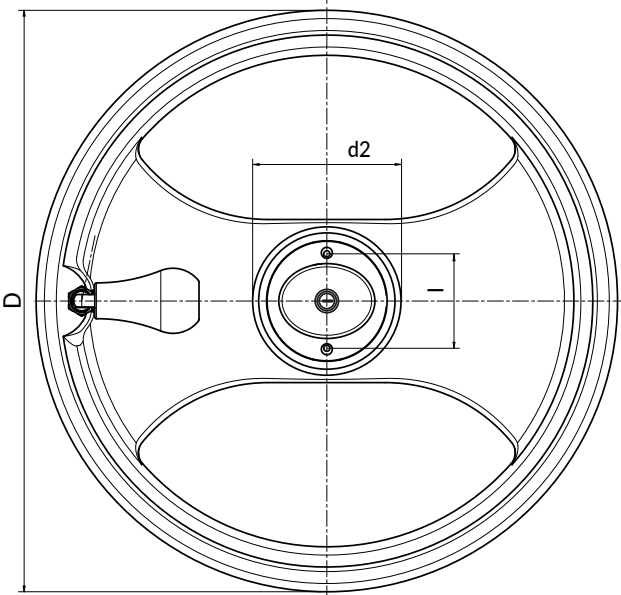
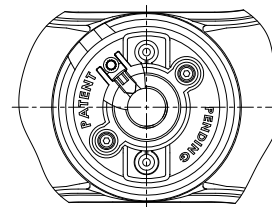
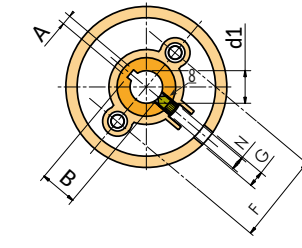
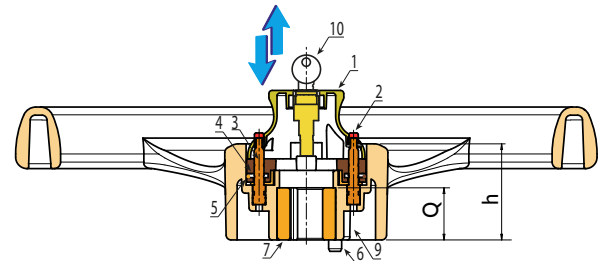
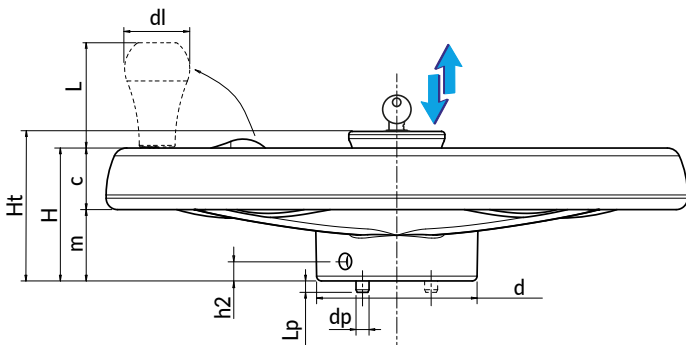
UL94
HB

RoHS
COMPLIANT

EUROMODEL SPOKE HANDWHEEL WITH REVOLVING AND FOLDING HANDLE WITH CENTRAL LOCKING KNOB AND LOCK

BREVETTATO

This product is an evolution of our series D601-D604. It is designed primarily for use in mobile storage cabinets. The handwheel spokes are shaped with a more modern design, typical of our Euromodel line. We have added a central knob controlling a special mechanism that blocks the rotation of the handwheel (and thus of the storage cabinet door on which it is mounted). The locking system blocks any movement in such a way that the handwheel cannot be removed to force the opening of the door. The sliding doors of the storage cabinet may be safely closed, thus preventing any undesired access or accidental movement. The product is covered by two patents (locking mechanism and anti-removal system).



Code	Art.	D	H	Ht	h	m	c	d	dp
-	D611350.TD2001H	350	80	92	59	43	37	98	8

 **BATECO**
EUROMODEL

D611

NEW

+135°
-30°

PA6

UL94
HB

RoHS
COMPLIANT

BREVETTATO

EUROMODEL SPOKE HANDWHEEL WITH REVOLVING AND FOLDING HANDLE WITH CENTRAL LOCKING KNOB AND LOCK

Materials:

Reinforced and stabilized polyamide. Resistant to oils and greases.

Surface finish:

Satin.

Colour:

Black (RAL 9011).

Inserts:

- (2) Green polyamide button (RAL 6024).
- (3) Grooved sliding guide to position the knob, galvanised steel.
- (4) Connection flange for knob, springs, safety pin, and locking pins. Reinforced and stabilized polyamide.
- (5) Harmonic stainless steel retaining spring (AISI 302).
- (6) Galvanized steel locking pin with hexagonal seat and retractable mechanism to facilitate the insertion of the pin into the hole of the structure.
- (7) Galvanized steel insert with smooth through bore (tolerance H10) and key.
- (8) Fastening thrust pin M8x12, in black-oxide treated steel, with hexagonal seat and fixing cone end (DIN 914 - UNI 5927).
- (9) Galvanized steel pin, connected to the knob through the central flange. Once lowered, the knob moves in front of the handwheel grub screw. This way it is impossible to insert an Allen wrench to loosen the grub screw and remove the handwheel from the cabinet. It is a safety function.
- (10) Nickel plated lock. Two numbered keys provided. Key can be removed from either position. To block the handwheel, push down the knob and turn the key by 90°. Lock stroke 10 mm. The keys are supplied attached to the knob.

Central knob:

(1) Central reinforced polyamide knob. Resistant to oils and greases.

Lateral handle:

Flush, foldaway revolving handle in handwheel M202 "Euromodel", with hexagonal connection. PA6+GF handle, black RAL 9011. Black-oxide treated internal mechanism. Fixed with black-oxide treated hexagon socket button head screw ISO 7838. Handle cap in green polyamide (RAL 6023 code 17).

Special requests:

- Upon request and for special quantities inserts can be supplied with custom hole diameter d1.
- Upon request and for special quantities inserts can be supplied in different materials/with different coatings.



04



This product works in a rather simple way: pulling the central knob upwards lifts a connection flange that raises both locking pins. After coming out of the metal plate of the mobile shelf and retracting inside the handwheel, these pins allow the operator to rotate the handwheel and consequently move the entire shelf. When in raised position, the knob hides both side caps covering the top of the guiding pins. When about to reach the desired shelf position, push the knob towards the inside of the handwheel: this action will lower the connection flange, allowing one of the locking pins to protrude thus facilitating the insertion of the pins in the holes of the metal plate. Also, the locking pin features a spring retaining mechanism, so that if the knob is pressed when the pin is not in the correct position yet, the pin will retract smoothly. The spring keeps it pressed, and as soon as the hole aligns with the pin, the spring pushes it in, thus locking the handwheel. In this position, both green buttons come out of the knob, making it easier to identify the correct locking position. The safety pin too follows the connection flange, so it lowers and covers the hole containing the thrust pin that fastens the handwheel to the pin of the shelf. This way it is impossible to insert a tool to loosen the grub screw. If you turn the supplied key by 90° from this position, and then extract it, it will no longer be possible to lift the knob and consequently unlock the movement of the handwheel and of the shelf.

Lp	h2	A	B	I	N	G	F	d2	d1	L	d1H10	Q	g
7	12	6	22,8	58	M8	10	55	78	40	64	20	32	1800

D615

NEW



AI

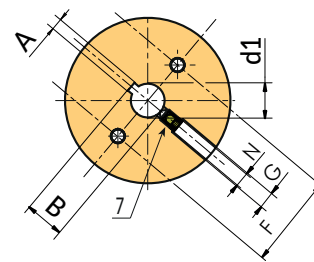
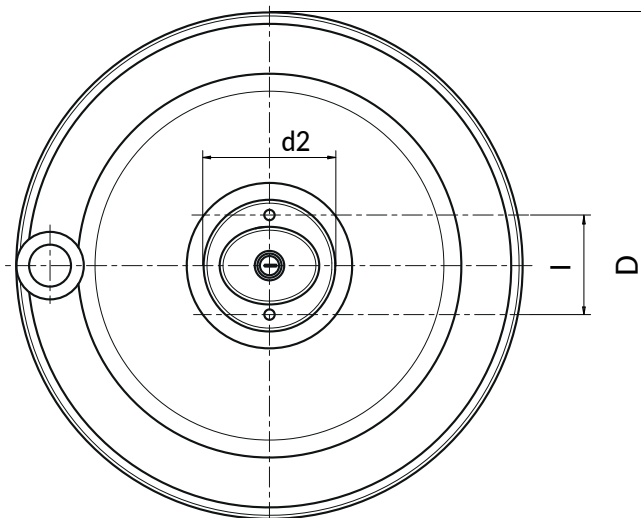
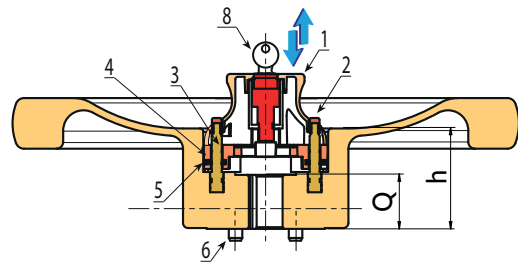
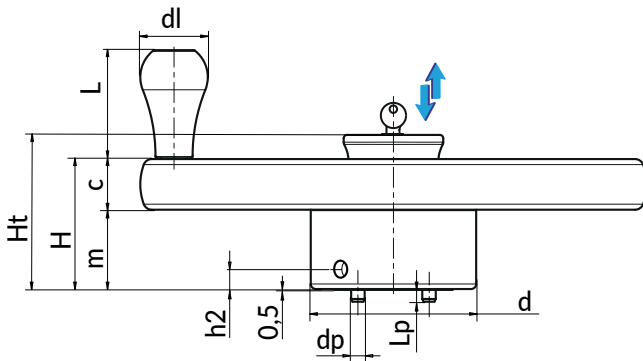
PA6

UL94
HB



ALUMINIUM SOLID HANDWHEEL WITH REVOLVING HANDLE WITH CENTRAL LOCKING KNOB

Metal version of our product D611. It is designed primarily for use in mobile storage cabinets. The handwheel has a simple shape since it is obtained by turning. We have added a central knob that controls a special mechanism that blocks the rotation of the handwheel (and thus of the storage cabinet door on which it is mounted). The locking system blocks any movement in such a way that the handwheel cannot be removed to force the opening of the door. The sliding doors of the storage cabinet may be safely closed, thus preventing any undesired access or accidental movement. The product is covered by two patents (locking mechanism and anti-removal system).



Code	Art.	D	H	Ht	h	m	c	d	dp
-	D615300.TD2001H	300	77,5	92	59	47,5	30	98	8

D615

NEW



Al

PA6

UL94
HB



ALUMINIUM SOLID HANDWHEEL WITH REVOLVING HANDLE WITH CENTRAL LOCKING KNOB

Materials:

Aluminium.

Surface finish:

Fine turned finish in all its parts, except the central part (sandblasted).

Colour:

Natural nickel.

Central knob:

(1) Central reinforced polyamide knob. Resistant to oils and greases.

Inserts:

- (2) Green polyamide button (RAL 6024).
- (3) Grooved sliding guide to position the knob, galvanised steel.
- (4) Connection flange for knob, springs, safety pin, and locking pins. Reinforced and stabilized polyamide.
- (5) Harmonic stainless steel retaining spring (AISI 302).
- (6) Galvanized steel locking pin with hexagonal seat and retractable mechanism to facilitate the insertion of the pin into the hole of the structure.
- (7) Fastening thrust pin M8x12, in black-oxide treated steel, with hexagonal seat and fixing cone end (DIN 914 - UNI 5927).
- (8) Nickel plated lock. Two numbered keys provided. Key can be removed from either position. To block the handwheel, push down the knob and turn the key by 90°. Lock stroke 10 mm. The keys are supplied attached to the knob.

Lateral handle:

Revolving handle M202 "Euromodel", in reinforced black polyamide RAL 9011. Fastening by galvanized DIN screw. Handle cap in green polyamide (RAL 6024 code 17). [page 513].

Special requests:

- Upon request and for special quantities inserts can be supplied with custom hole diameter d1.



04



This product works in a rather simple way: pulling the central knob upwards lifts a connection flange that raises both locking pins. After coming out of the metal plate of the mobile shelf and retracting inside the handwheel, these pins allow the operator to rotate the handwheel and consequently move the entire shelf. When in raised position, the knob hides both side caps covering the top of the guiding pins. When about to reach the desired shelf position, push the knob towards the inside of the handwheel: this action will lower the connection flange, allowing one of the locking pins to protrude thus facilitating the insertion of the pins in the holes of the metal plate. Also, the locking pin features a spring retaining mechanism, so that if the knob is pressed when the pin is not in the correct position yet, the pin will retract smoothly. The spring keeps it pressed, and as soon as the hole aligns with the pin, the spring pushes it in, thus locking the handwheel. In this position, both green buttons come out of the knob, making it easier to identify the correct locking position. The safety pin too follows the connection flange, so it lowers and covers the hole containing the thrust pin that fastens the handwheel to the pin of the shelf. This way it is impossible to insert a tool to loosen the grub screw. If you turn the supplied key by 90° from this position, and then extract it, it will no longer be possible to lift the knob and consequently unlock the movement of the handwheel and of the shelf.

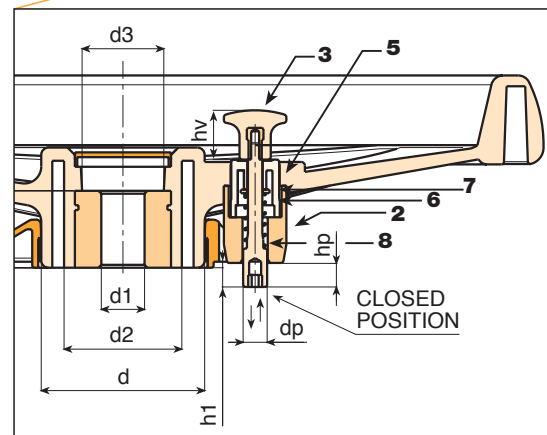
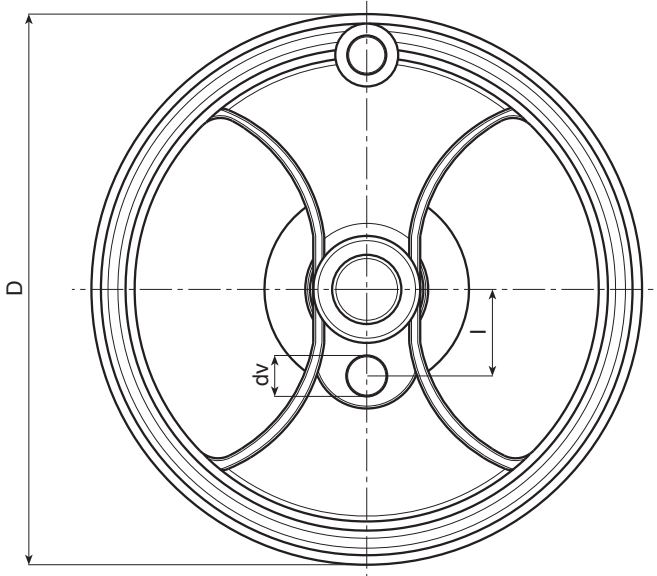
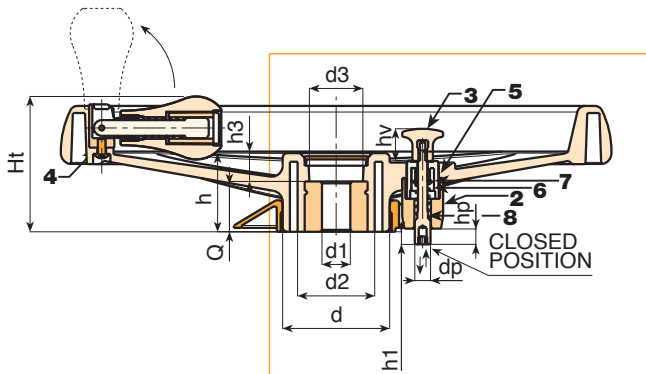
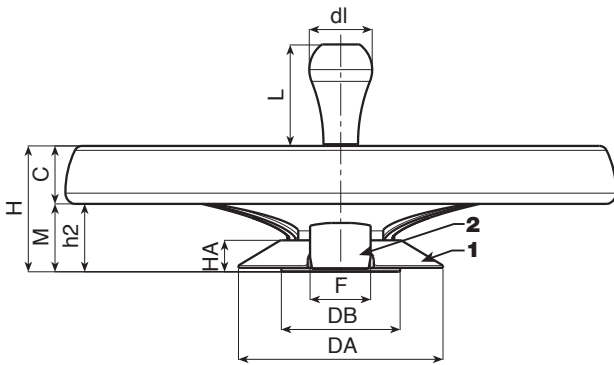
Lp	h2	A	B	I	N	G	F	d2	d1	L	d1H10	Q	g
7	12	6	22,8	58	M8	10	55	78	40	64	20	32	3750

D601



TWO-SPOKE HANDWHEEL WITH FOLDAWAY HANDLE AND LOCKING PISTON

This product type is a variation of our traditional handwheel D207-350. By simply adding a special assembly kit this product adapts to the requirements of a particular market: the mobile shelving market (mobile storage cabinets mounted on a trackway). This handwheel is used to move the shelving along the trackway. A fitted lock or locking piston serves to lock, stop, position the shelving units in certain positions.



Code	Art.	D	H	Ht	h	d	M	C	h2
D601350.0006	D601350. TD2001H	346	80	86	49.5	67.5	24	56	43.5

Dm = Maximum obtainable diameter for subsequent machining. (widening)
A.R. = Upon request, for a minimum of 50 pieces.



D601



TWO-SPOKE HANDWHEEL WITH FOLDAWAY HANDLE AND LOCKING PISTON

Materials:

Reinforced and stabilized polyamide. Resistant to oils and greases.

Surface finish:

Satin.

Colour:

Black (RAL 9011).

Central cap:

Grey polyamide (RAL 7035). 13).

Alternative cap colours:

Orange (RAL 2004 code 02).
 Blue (RAL 5015 code 07).
 Yellow (RAL 1021 code 10).
 Red (RAL 3000 code 16).
 Green (RAL 6024 code 17).
 Black (RAL 9011 code 01).

Locking piston kit:

- (1) PA6+GF hole cover ring. Colour Black (RAL 9011). Push-fit assembly. Removable.
- (2) PA6+GF piston holder. Colour Black (RAL 9011). Assembly with two self-tapping, galvanised steel screws, screwdriver head 3.5x30.
- (3) PA6+GF gear stick d. 26 with positioning brackets. Colour Black (RAL 9011). With M04 brass female threaded insert.
- (5) PA6+GF gear stick support with positioner. Colour Black (RAL 9011).
- (6) Galvanised steel return spring.
- (7) Galvanised steel washer.
- (8) Galvanised steel locking piston. Seat for Allen wrench no. 5 for fastening. Piston stroke 10 mm. Useful projection from handwheel 8 mm.

Inserts:

Galvanised steel insert with smooth through bore (tolerance H10).
 (4) Black-oxide treated hexagon socket button head screw ISO 7838 for fastening handle.

Lateral handle:

Flush, foldaway revolving handle in handwheel M202 "Euromodel", with hexagonal connection. PA6+GF handle, black RAL 9011. Black-oxide treated internal mechanism. Fixed with black-oxide treated hexagon socket button head screw ISO 7838. Handle cap in grey polyamide (RAL 7035 code 13).

Fixing method:

For fixing systems, or execution of keyways or square holes, please refer to the technical notes attached to the catalogue [page 966].

Special requests:

- Upon request and for a minimum of 50 pieces inserts can be supplied with hole d1 with tolerance H7 and black oxide treated finish. Add letters ZB to the standard code. Example: D601350.TD1001PZB.
- Upon request and for special quantities inserts can be supplied with custom hole diameter d1.
- Upon request and for special quantities inserts can be supplied in different materials/with different coatings.
- Upon request and for special quantities available in the colours indicated in the chart [page 959].



04

h3	d2	d3	Dm	d1H10	Q	l	dv	hv	h1	dp	hp	DA	HA	DB	F	
17.5	49	35	28	20	32	55	20	21	8	10	10	131	20	76	38	1800

Dm = Maximum obtainable diameter for subsequent machining. (widening)
 A.R. = Upon request, for a minimum of 50 pieces.

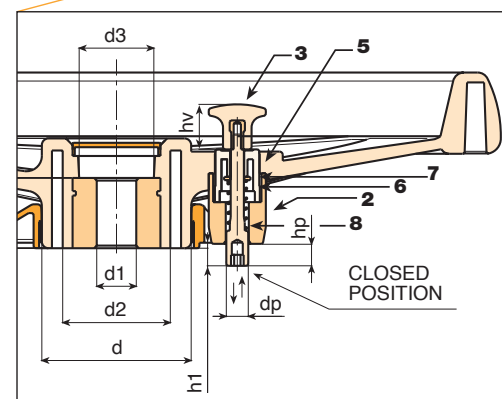
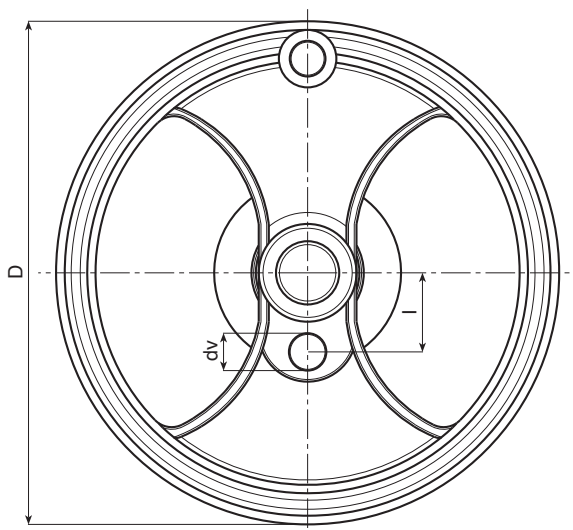
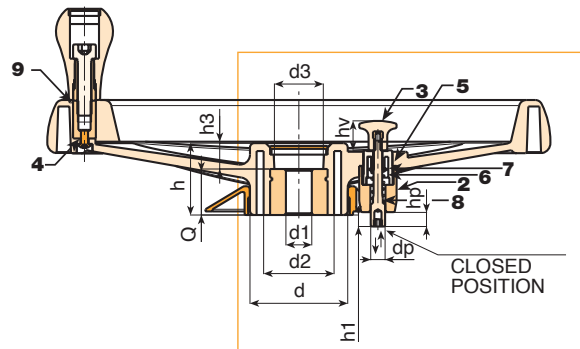
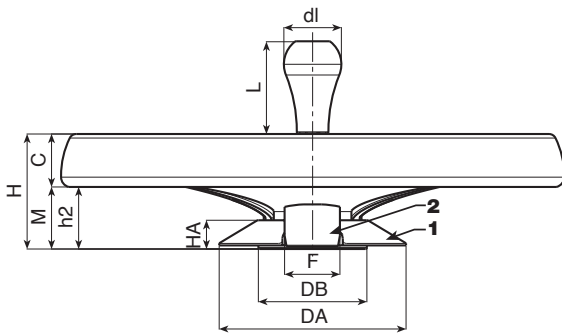


D602



TWO-SPOKE HANDWHEEL WITH REVOLVING HANDLE AND LOCKING PISTON

This product type is a variation of our traditional handwheel D207-350. By simply adding a special assembly kit this product adapts to the requirements of a particular market: the mobile shelving market (mobile storage cabinets mounted on a trackway). This handwheel is used to move the shelving along the trackway. A fitted lock or locking piston serves to lock, stop, position the shelving units in certain positions.



Code	Art.	D	H	Ht	h	d	M	C	h2
D602350.0004	D602350.TD2001H	346	80	86	49.5	67.5	24	56	43.5

Dm = Maximum obtainable diameter for subsequent machining. (widening)
A.R. = Upon request, for a minimum of 50 pieces.



D602



TWO-SPOKE HANDWHEEL WITH REVOLVING HANDLE AND LOCKING PISTON

Materials:

Reinforced and stabilized polyamide. Resistant to oils and greases.

Surface finish:

Satin.

Colour:

Black (RAL 9011).

Central cap:

Grey polyamide (RAL 7035). 13).

Alternative cap colours:

Orange (RAL 2004 code 02).
Blue (RAL 5015 code 07).
Yellow (RAL 1021 code 10).
Red (RAL 3000 code 16).
Green (RAL 6024 code 17).
Black (RAL 9011 code 01).

Locking piston kit:

(1) PA6+GF hole cover ring. Colour Black (RAL 9011). Push-fit assembly. Removable.
(2) PA6+GF piston holder. Colour Black (RAL 9011). Assembly with two self-tapping, galvanised steel screws, screwdriver head 3.5x30.
(3) PA6+GF gear stick d. 26 with positioning brackets. Colour Black (RAL 9011). With M04 brass female threaded insert.
(5) PA6+GF gear stick support with positioner. Colour Black (RAL 9011).
(6) Galvanised steel return spring.
(7) Galvanised steel washer.
(8) Galvanised steel locking piston. Seat for Allen wrench no. 5 for fastening. Piston stroke 10 mm. Useful projection from handwheel 8 mm.

Inserts:

Galvanised steel insert with smooth through bore (tolerance H10).
(4) Black-oxide treated hexagon socket button head screw ISO 7838 for fastening handle.
(9) Hexagonal black-oxide treated steel insert with threaded through hole.

Lateral handle:

Revolving handle M202 "Euromodel", black RAL 9011. Handle cap in grey polyamide (RAL 7035 code 13).

Fixing method:

For fixing systems, or execution of keyways or square holes, please refer to the technical notes attached to the catalogue [page 966].

Special requests:

- Upon request and for a minimum of 50 pieces inserts can be supplied with hole d1 with tolerance H7 and black oxide treated finish. Add letters ZB to the standard code. Example: D602350.TD1001PZB.
- Upon request and for special quantities inserts can be supplied with custom hole diameter d1.
- Upon request and for special quantities inserts can be supplied in different materials/with different coatings.
- Upon request and for special quantities available in the colours indicated in the chart [page 959].



h3	d2	d3	Dm	d1H10	Q	l	dv	hv	h1	dp	hp	DA	HA	DB	F	
17.5	49	35	28	20	32	55	20	21	8	10	10	131	20	76	38	1800

Dm = Maximum obtainable diameter for subsequent machining. (widening)
A.R. = Upon request, for a minimum of 50 pieces.

D603



PA6
+G.F.

UL94
HB

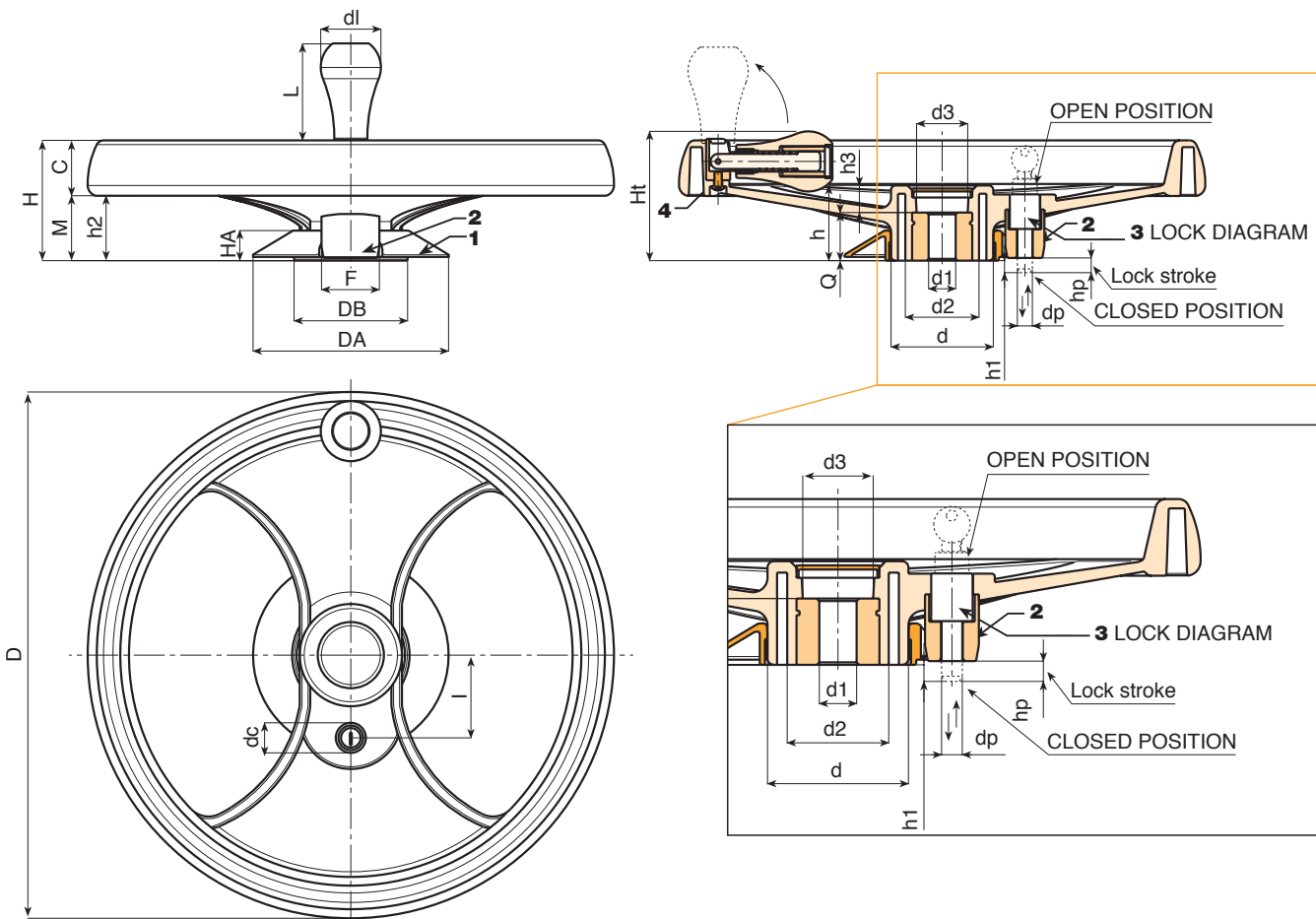


TWO-SPOKE HANDWHEEL WITH FOLDAWAY HANDLE AND KEY LOCK

This product type is a variation of our traditional handwheel D207-350. By simply adding a special assembly kit this product adapts to the requirements of a particular market: the mobile shelving market (mobile storage cabinets mounted on a trackway). This handwheel is used to move the shelving along the trackway. A fitted lock or locking piston serves to lock, stop, position the shelving units in certain positions.



04



Code	Art.	D	H	Ht	h	d	M	C	h2
D603350.0004	D603350.TD2001H	346	80	86	49.5	67.5	24	56	43.5

Dm = Maximum obtainable diameter for subsequent machining. (widening)
A.R. = Upon request, for a minimum of 50 pieces.



D603



TWO-SPOKE HANDWHEEL WITH FOLDAWAY HANDLE AND KEY LOCK

Materials:

Reinforced and stabilized polyamide. Resistant to oils and greases.

Surface finish:

Satin.

Colour:

Black (RAL 9011).

Central cap:

Grey polyamide (RAL 7035). 13).

Alternative cap colours:

Orange (RAL 2004 code 02).
 Blue (RAL 5015 code 07).
 Yellow (RAL 1021 code 10).
 Red (RAL 3000 code 16).
 Green (RAL 6024 code 17).
 Black (RAL 9011 code 01).

Clamping lock kit:

(1) PA6+GF hole cover ring. Colour Black (RAL 9011). Push-fit assembly. Removable.
 (2) PA6+GF piston holder. Colour Black (RAL 9011). Assembly with two self-tapping, galvanised steel screws, screwdriver head 3.5x30.
 (3) Nickel plated lock. Two numbered keys provided. Key can be removed from either position. To close the handwheel push and turn the key by 90°. Lock stroke 10 mm. Useful projection of pin from handwheel 8 mm. Keys supplied secured to the handwheel rim.

Inserts:

Galvanised steel insert with smooth through bore (tolerance H10).
 (4) Black-oxide treated hexagon socket button head screw ISO 7838 for fastening handle.

Lateral handle:

Flush, foldaway revolving handle in handwheel M202 "Euromodel", with hexagonal connection. PA6+GF handle, black RAL 9011. Black-oxide treated internal mechanism. Fixed with black-oxide treated hexagon socket button head screw ISO 7838. Handle cap in grey polyamide (RAL 7035 code 13).

Fixing method:

For fixing systems, or execution of keyways or square holes, please refer to the technical notes attached to the catalogue [page 966].

Special requests:

- Upon request and for a minimum of 50 pieces inserts can be supplied with hole d1 with tolerance H7 and black oxide treated finish. Add letters ZB to the standard code. Example: D603350.TD1001PZB.
- Upon request and for special quantities inserts can be supplied with custom hole diameter d1.
- Upon request and for special quantities inserts can be supplied in different materials/with different coatings.
- Upon request and for special quantities available in the colours indicated in the chart [page 959].



04

h3	d2	d3	Dm	d1H10	Q	l	dc	h1	dp	hp	DA	HA	DB	F	
17.5	49	35	28	20	32	55	20	8	10	10	131	20	76	38	1800

Dm = Maximum obtainable diameter for subsequent machining. (widening)
 A.R. = Upon request, for a minimum of 50 pieces.



D604



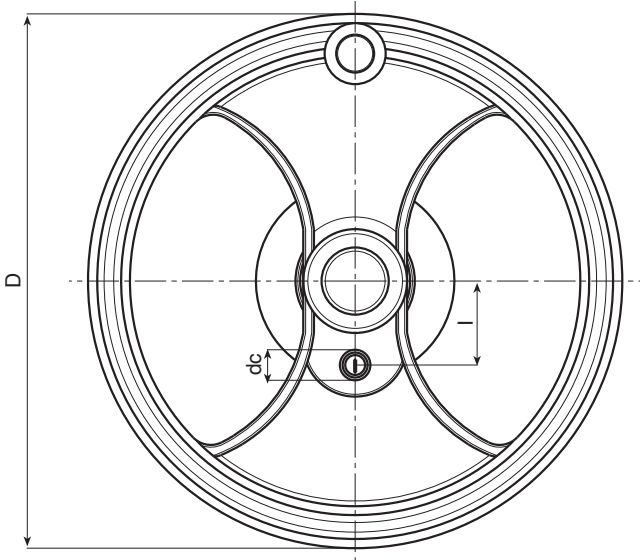
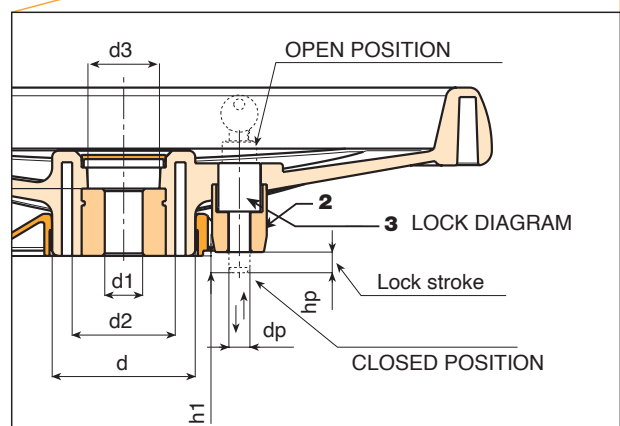
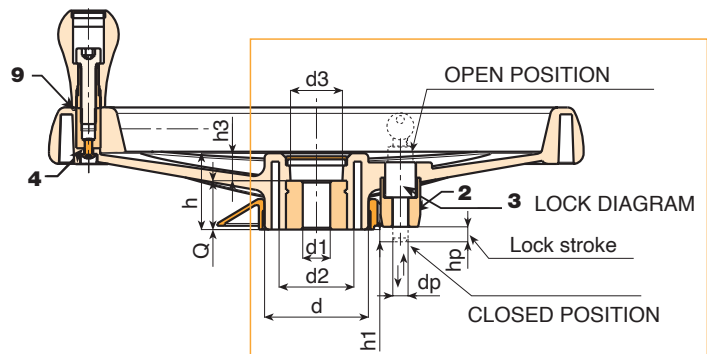
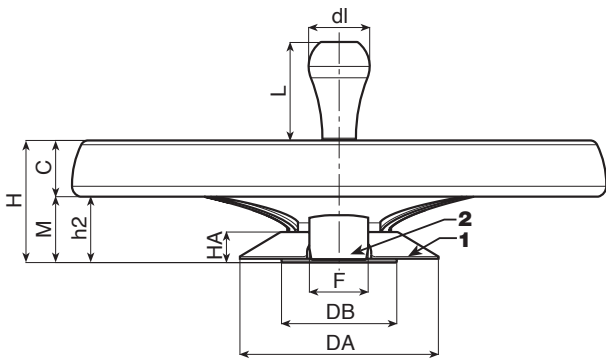
PA6
+G.F.

UL94
HB

RoHS
COMPLIANT

TWO-SPOKE HANDWHEEL WITH REVOLVING HANDLE AND KEY LOCK

This product type is a variation of our traditional handwheel D207-350. By simply adding a special assembly kit this product adapts to the requirements of a particular market: the mobile shelving market (mobile storage cabinets mounted on a trackway). This handwheel is used to move the shelving along the trackway. A fitted lock or locking piston serves to lock, stop, position the shelving units in certain positions.



Code	Art.	D	H	Ht	h	d	M	C	h2
D604350.0003	D604350.TD2001H	346	80	86	49.5	67.5	24	56	43.5

Dm = Maximum obtainable diameter for subsequent machining. (widening)
A.R. = Upon request, for a minimum of 50 pieces.



D604



TWO-SPOKE HANDWHEEL WITH REVOLVING HANDLE AND KEY LOCK

Materials:

Reinforced and stabilized polyamide. Resistant to oils and greases.

Surface finish:

Satin.

Colour:

Black (RAL 9011).

Central cap:

Grey polyamide (RAL 7035). 13).

Alternative cap colours:

Orange (RAL 2004 code 02).
 Blue (RAL 5015 code 07).
 Yellow (RAL 1021 code 10).
 Red (RAL 3000 code 16).
 Green (RAL 6024 code 17).
 Black (RAL 9011 code 01).

Clamping lock kit:

(1) PA6+GF hole cover ring. Colour Black (RAL 9011). Push-fit assembly. Removable.
 (2) PA6+GF piston holder. Colour Black (RAL 9011). Assembly with two self-tapping, galvanised steel screws, screwdriver head 3.5x30.
 (3) Nickel plated lock. Two numbered keys provided. Key can be removed from either position. To close the handwheel push and turn the key by 90°. Lock stroke 10 mm. Useful projection of pin from handwheel rim 8 mm. Keys supplied secured to the handwheel rim.

Inserts:

Galvanised steel insert with smooth through bore (tolerance H10).
 (4) Black-oxide treated hexagon socket button head screw ISO 7838 for fastening handle.
 (9) Hexagonal black-oxide treated steel insert with threaded through hole.

Lateral handle:

Revolving handle M202 "Euromodel", black RAL 9011.
 Handle cap in grey polyamide (RAL 7035 code 13).

Fixing method:

For fixing systems, or execution of keyways or square holes, please refer to the technical notes attached to the catalogue [page 966].

Special requests:

- Upon request and for a minimum of 50 pieces inserts can be supplied with hole d1 with tolerance H7 and black oxide treated finish. Add letters ZB to the standard code. Example: D604350.TD1001PZB.
- Upon request and for special quantities inserts can be supplied with custom hole diameter d1.
- Upon request and for special quantities inserts can be supplied in different materials/with different coatings.
- Upon request and for special quantities available in the colours indicated in the chart [page 959].



04

h3	d2	d3	Dm	d1H10	Q	l	dc	h1	dp	hp	DA	HA	DB	F	
17.5	49	35	28	20	32	55	20	8	10	10	131	20	76	38	1800

Dm = Maximum obtainable diameter for subsequent machining. (widening)
 A.R. = Upon request, for a minimum of 50 pieces.



D454

"EUROMODEL" FOUR-ARMS CONTROL HANDWHEEL



MODELLO DEPOSITATO

Materials:

Special technopolymer reinforced with high-strength glass fiber.
Resistant to oils and greases.

Surface finish:

Satin.

Colour:

Black (RAL 9011).

Central cap:

Grey polyamide (RAL 7035). 13.

Alternative cap colours:

Orange (RAL 2004 code 02).
Blue (RAL 5015 code 07).
Yellow (RAL 1021 code 10).
Red (RAL 3000 code 16).
Green (RAL 6024 code 17).
Black (RAL 9011 code 01).

Main insert:

Galvanised steel insert with smooth through bore (tolerance H10).

Hub:

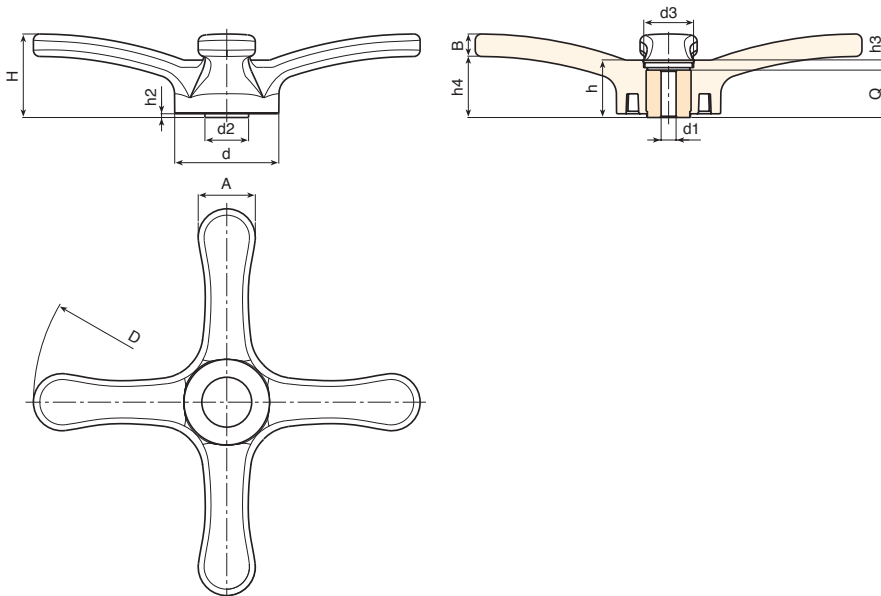
Lightweight hub.

Fixing method:

For fixing systems, or execution of keyways or square holes, please refer to the technical notes attached to the catalogue [page 966].

Special requests:

- Upon request and for a minimum of 50 pieces inserts can be supplied with hole d_1 with tolerance H7 and black oxide treated finish. Add letters ZB to the standard code. Example: D454310.TD1701PZB.
- Upon request and for special quantities inserts can be supplied with custom hole diameter d_1 .
- Upon request and for special quantities inserts can be supplied with custom threaded hole d_1 .
- Upon request and for special quantities inserts can be supplied in different materials/with different coatings.



Code	Art.	D	H	h	d	d2	A	B	h2	h3	h4	d3	Dm	d1 _{H10}	Q	
D454310.0001	D454310.TD0801P	308	66	45.5	83	35.5	45.5	20	3	7.5	46	34	26	08	38	900

Attention: For a minimum of 50 pieces the diameter d_1 can be customised (hole tolerance H10 galvanised and H7 black-oxide treated).
Dm = Maximum obtainable diameter for subsequent machining (widening).

D214



THREE-ARM CONTROL HANDWHEEL WITH SMOOTH OR THREADED HOLE

Materials:

Reinforced and stabilized polyamide.
Resistant to oils and greases.

Surface finish:

Satin.

Colour:

Black (RAL 9011).

Central cap:

Grey polyamide (RAL 7035). 13).

Alternative cap colours:

Orange (RAL 2004 code 02).
Blue (RAL 5015 code 07).
Yellow (RAL 1021 code 10).
Red (RAL 3000 code 16).
Green (RAL 6024 code 17).
Black (RAL 9011 code 01).

Main insert:

Version TD:

Galvanised steel insert with smooth through bore (tolerance H10).

Version TM:

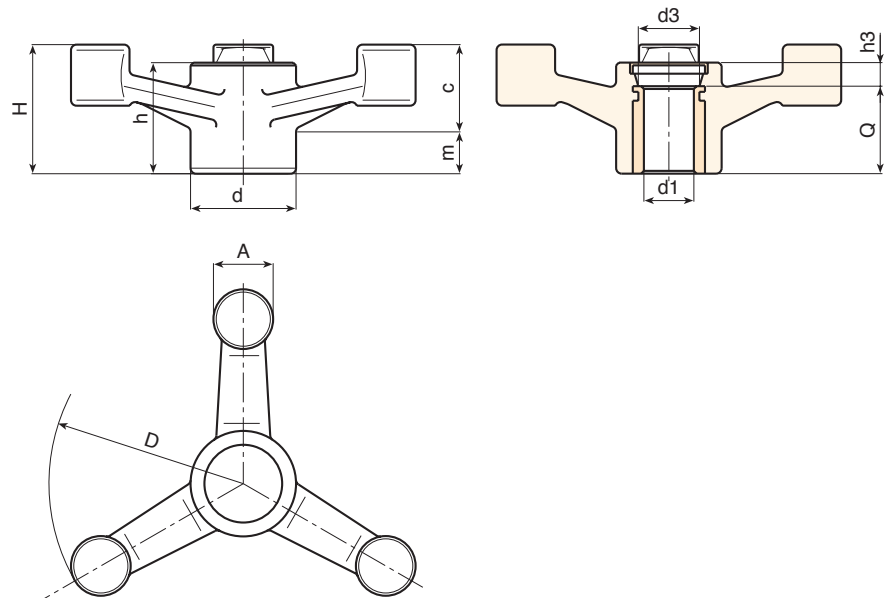
Galvanised steel insert with threaded through hole (thread tolerance 6H).

Fixing method:

For fixing systems, or execution of keyways or square holes, please refer to the technical notes attached to the catalogue [page 966].

Special requests:

- Upon request and for a minimum of 50 pieces inserts can be supplied with hole d1 with tolerance H7 and black oxide treated finish. Add letters ZB to the standard code. Example: D214140.TD1301PZB.
- Upon request and for special quantities inserts can be supplied with custom hole diameter d1.
- Upon request and for special quantities the handwheel can be supplied in Orange (RAL 2004 Code 02).
- Upon request and for special quantities inserts can be supplied in different materials/with different coatings.



Version TD with insert and smooth through bore (tolerance H10).

Code	Art.	D	H	h	d	m	c	A	h3	d3	Dm	d1 _{H10}	Q	
D214140.0005	D214140.TD0801P	137	45	39.5	38	19	26	22	7.5	26	22	8	32	200
D214140.0006	D214140.TD1201P	137	45	39.5	38	19	26	22	7.5	26	22	12	32	196
D214180.0002	D214180.TD0801P	177	56	42.5	38	20	35	23	10.5	26	22	8	32	280
D214220.0003	D214220.TD0801P	221	61	46	38	22	39	25	14	26	22	8	32	340
D214220.0010	D214220.TD1801P	221	61	46	38	22	39	25	14	26	22	18	32	325

Attention: For a minimum of 50 pieces the diameter d1 can be customised (hole tolerance H10 galvanised and H7 black-oxide treated).

Dm = Maximum obtainable diameter for subsequent machining (widening).

Version TM with insert and threaded through hole.

Code	Art.	D	H	h	d	m	c	A	h3	d3	d1 _{6H}	Q	
D214140.0019	D214140.TM1201P	137	45	39.5	38	19	26	22	7.5	26	M12	32	197
D214140.0021	D214140.TM1601P	137	45	39.5	38	19	26	22	7.5	26	M16	32	193
D214180.0015	D214180.TM1601P	177	56	42.5	38	20	35	23	10.5	26	M16	32	275
D214180.0017	D214180.TM1801P	177	56	42.5	38	20	35	23	10.5	26	M18	32	270
D214220.0013	D214220.TM1401P	221	61	46	38	22	39	25	14	26	M14	32	335
D214220.0014	D214220.TM1601P	221	61	46	38	22	39	25	14	26	M16	32	333
D214220.0018	D214220.TM1801P	221	61	46	38	22	39	25	14	26	M18	32	330

Attention: for a minimum of 50 pieces the diameter d1 can be produced with the requested dimensions.



D779



LIGHTWEIGHT CONTROL HANDWHEEL WITH REVOLVING HANDLE

Materials:

Reinforced polyamide.
Resistant to oils and greases.

Surface finish:

Satin.

Colour:

Black (RAL 9011).

Main insert:

Galvanised steel insert with smooth through bore (tolerance H10).

Lateral insert:

Brass insert with threaded through hole.

Lateral handle:

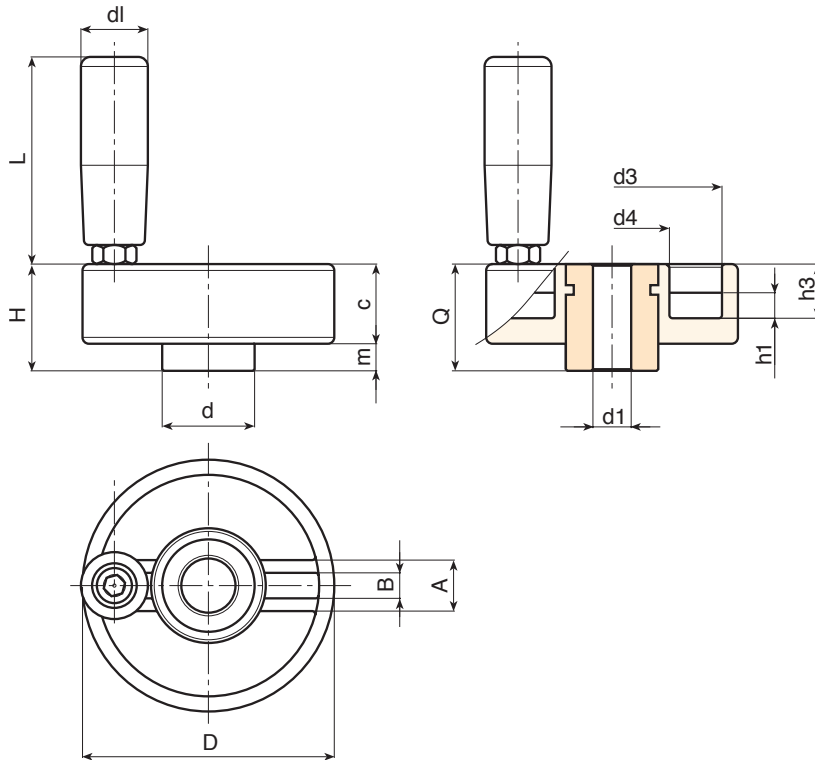
Revolving handle art. M144 [page 504].

Fixing method:

For fixing systems, or execution of keyways or square holes, please refer to the technical notes attached to the catalogue [page 966].

Special requests:

- Upon request and for a minimum of 50 pieces inserts can be supplied with hole d_1 with tolerance H7 and black oxide treated finish. Add letters ZB to the standard code. Example: D77980.TD1101PZB.
- Upon request and for special quantities inserts can be supplied with custom hole diameter d_1 .
- Upon request and for special quantities inserts can be supplied in different materials/with different coatings.
- Upon request and for special quantities available in the colours indicated in the chart [page 959].



Code	Art.	D	H	d	c	m	h1	h3	A	B	d3	d4	d1	L	Dm	d1 _{H10}	Q	g
D77980.0011	D77980.TP0501P	80	34	29	25	9	8	17	16	7.5	69	36	21	65	20	8	34	285
D77980.0003	D77980.TD1201P	80	34	29	25	9	8	17	16	7.5	69	36	21	65	20	12	34	279

Attention: For a minimum of 50 pieces the diameter d_1 can be customised (hole tolerance H10 galvanised and H7 black-oxide treated).
Dm = Maximum obtainable diameter for subsequent machining (widening).



D782

LIGHTWEIGHT CONTROL HANDWHEEL



Materials:

Reinforced polyamide.
Resistant to oils and greases.

Surface finish:

Satin.

Colour:

Black (RAL 9011).

Main insert:

Galvanised steel insert with smooth through bore (tolerance H10).

Fixing method:

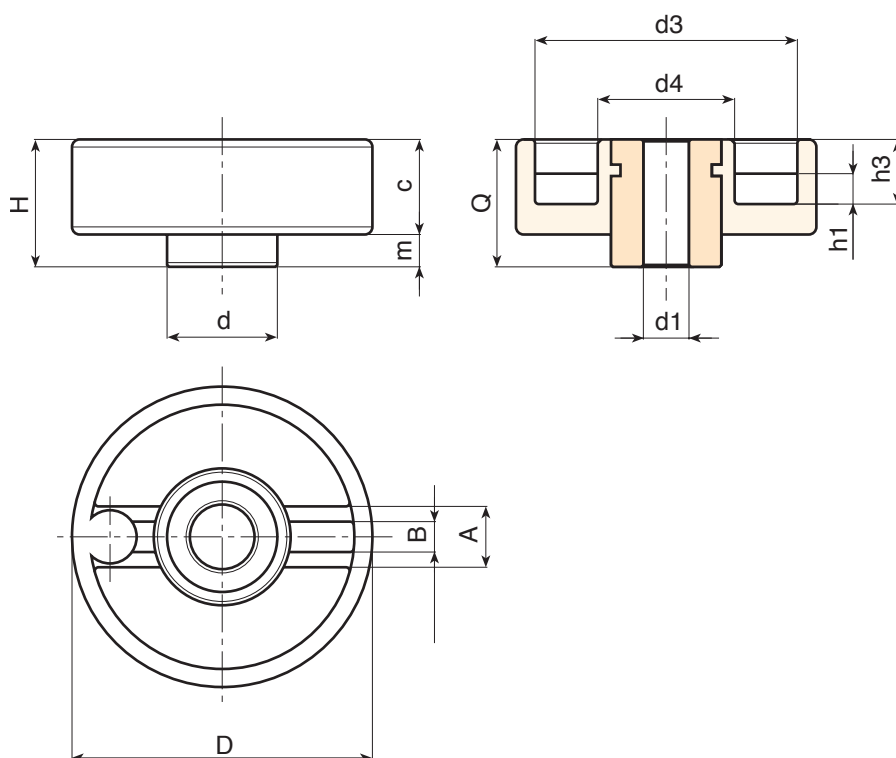
For fixing systems, or execution of keyways or square holes, please refer to the technical notes attached to the catalogue [page 966].

Special requests:

- Upon request and for a minimum of 50 pieces inserts can be supplied with hole d1 with tolerance H7 and black oxide treated finish. Add letters ZB to the standard code. Example: D78280.TD1101PZB.
- Upon request and for special quantities inserts can be supplied with custom hole diameter d1.
- Upon request and for special quantities inserts can be supplied in different materials/with different coatings.
- Upon request and for special quantities available in the colours indicated in the chart [page 959].



04



Code	Art.	D	H	d	c	m	h1	h3	A	B	d3	d4	Dm	d1 _{H10}	Q	
D78280.0001	D78280.TD0801	80	34	29	25	9	8	17	16	7.5	69	36	20	8	34	230
D78280.0002	D78280.TD1201	80	34	29	25	9	8	17	16	7.5	69	36	20	12	34	227

Attention: For a minimum of 50 pieces the diameter d1 can be customised (hole tolerance H10 galvanised and H7 black-oxide treated).
Dm = Maximum obtainable diameter for subsequent machining (widening).





NOT EVERYONE HAS THE KEY TO BUSINESS SUCCESS.

