

## STEEL EYELET END FITTING

Componenti vari DIN

### Materials:

Steel with strength class 5.8.

### Surface finish:

Fine turned finish.

### Colour:

Standard black-oxide treatment.

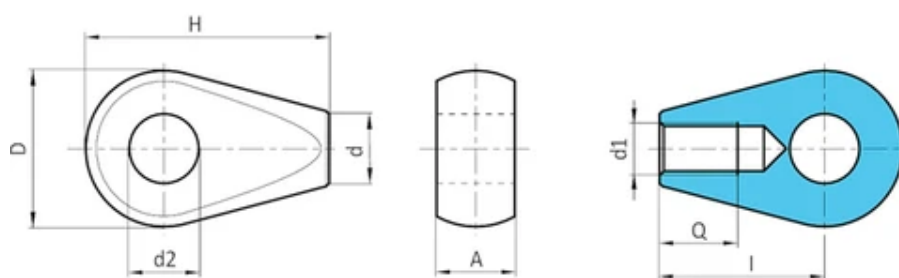
### Hole:

(d1) Female threaded hole machined from solid metal (thread tolerance 6H).

(d2) Smooth through hole machined from solid metal (hole tolerance H7).

### Special Requests:

On request the product can be supplied with galvanised finish, (code no.: Y442018.VZM06 - attention: hole tolerance H9).



Code	art.	D -0.3	H	A -0.15	I	d	d2 H7	d1 6H	Q +1	Weight (g)
Y44218.0001	Y44218.SBM06	18	37	9	19	8,5	7,1	M6	9	1,4