

20

SAW SAFETY GUARD (FOR CIRCULAR SAW)

Accessori per macc. a legno

Materials:

(1-2) Polycarbonate.

Surface finish:

Satin.

Colour:

Orange (RAL 2004 code 02).

Inserts:

(3) Aluminium rivet AL4.010 4.0x10.

(4) Brass threaded through-hole insert.

(5) Galvanised steel washer.

(6) Turned galvanised steel pin with stop d.6x30.

(7) Brass self-tapping screw M3x10 DIN 97.

Clamping lever:

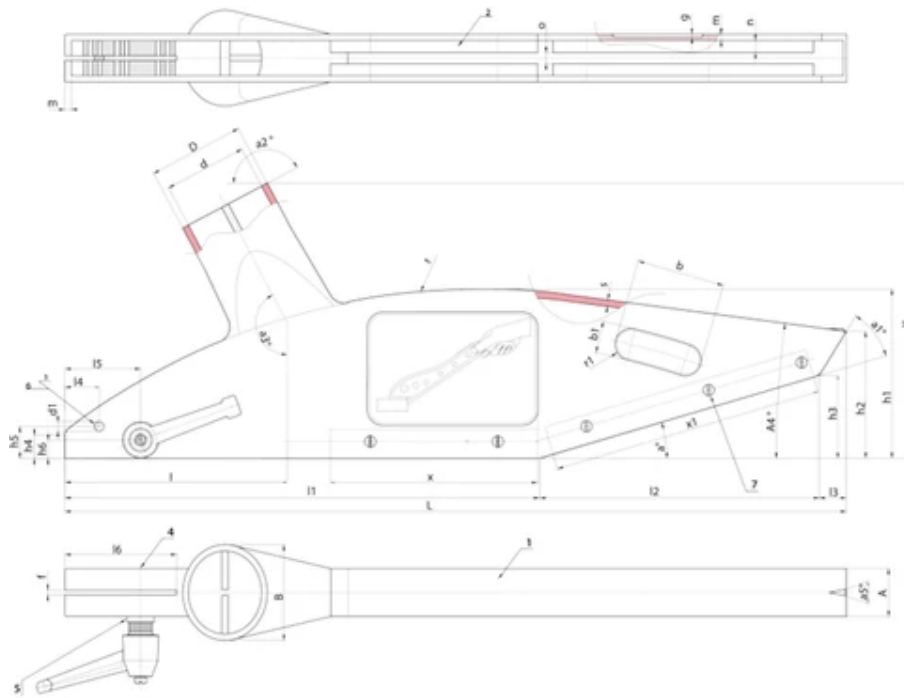
Indexed clamping lever art. A523065.TM08X3001.

Special requests:

Upon request and for special quantities the guard can be supplied in Yellow (RAL 1007) or in transparent version.

Suction tube adapter D. 40 to be ordered separately - Art. T556040.T01.





Code	Art.	L	A	B	H	D	d	d1	l	l1	l2	l3	l4	l5	l6	h1	h2
T556250.0001	T556250.C02	337	30	60	147	60	53	6.5	80	243	77	16.5	10	23.5	42	75	57.5
T556300.0001	T556300.C02	490	30	60	172	60	53	6	145	297	176	17	21.5	47.5	70	105	79.5

Code	Art.	h3	h4	h5	h6	a°	a1°	a2°	a3°	a5°	b	b1	f	g	m	n	o
T556250.0001	T556250.C02	28	23	20	10.5	20	40	152	152	-	44	20.5	4	450	5.5	7	7
T556300.0001	T556300.C02	52	14.5	20	11.5	16.5	41	152	152	22	56	21	3	650	4	7	8

Code	Art.	r	r1	s	x	x1	Weight (g)
T556250.0001	T556250.C02	290	10	4	-	190	450
T556300.0001	T556300.C02	430	10	4	130	170	650