

20

## CROSS CLAMP WITH 90° HOLES AND SCREW FIXING

Accessori per trasporto

### Materials:

Reinforced polyamide.

Resistant to oils and greases.

### Surface finish:

Satin.

### Colour:

Black (RAL 9011).

### Inserts:

(1) Galvanised steel hexagon socket head cap screw TCCE DIN 912.

Galvanised steel nut with threaded through hole DIN 934/UNI 5588.

### Hole:

Smooth through hole obtained by moulding the plastic.

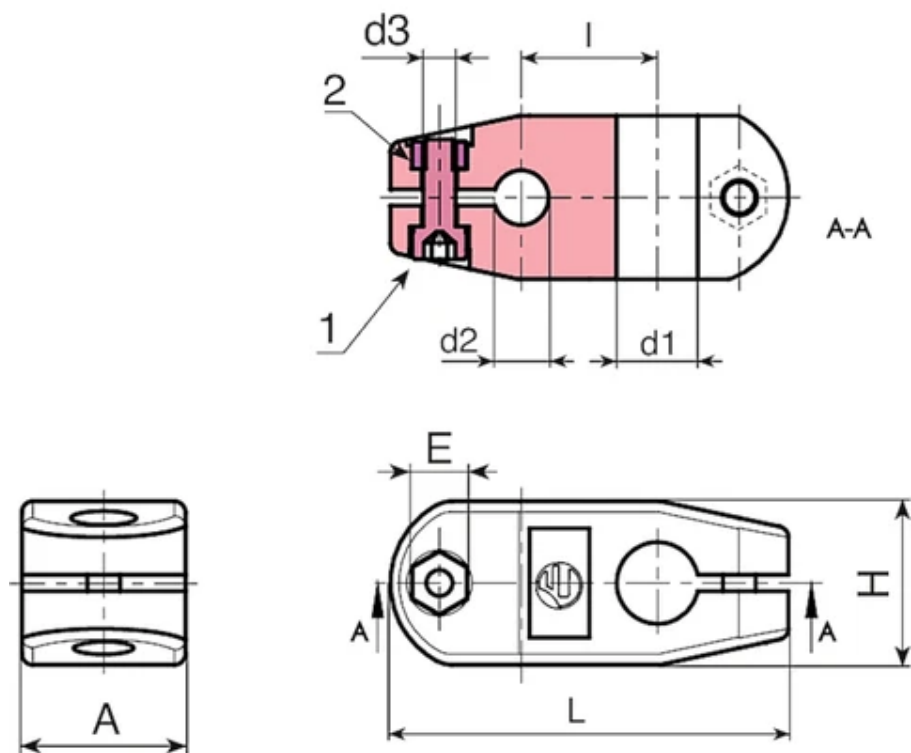
### Special requests:

Upon request and for special quantities the clamp can be supplied with holes d1 and d2 to customer's drawing.

Upon request and for special quantities the clamp can be supplied with holes d1 and d2 square.

Upon request and for special quantities available in the colours indicated in the chart on page TitoloTabellaColori.





Code	art.	L	A	H	E	I	c	d3	d1	d2	Weight (g)
T20073.0003	T20073.TG121001	73	30	30	10	25	2,8	M06	12	10	72
T20073.0004	T20073.TG121201	73	30	30	10	25	2,8	M06	12	12	70
T20073.0005	T20073.TG121401	73	30	30	10	25	2,8	M06	12	14	69
T20073.0006	T20073.TG121601	73	30	30	10	25	2,8	M06	12	16	68