

19 INSULATING WASHER PAIR
Rondelle isolanti

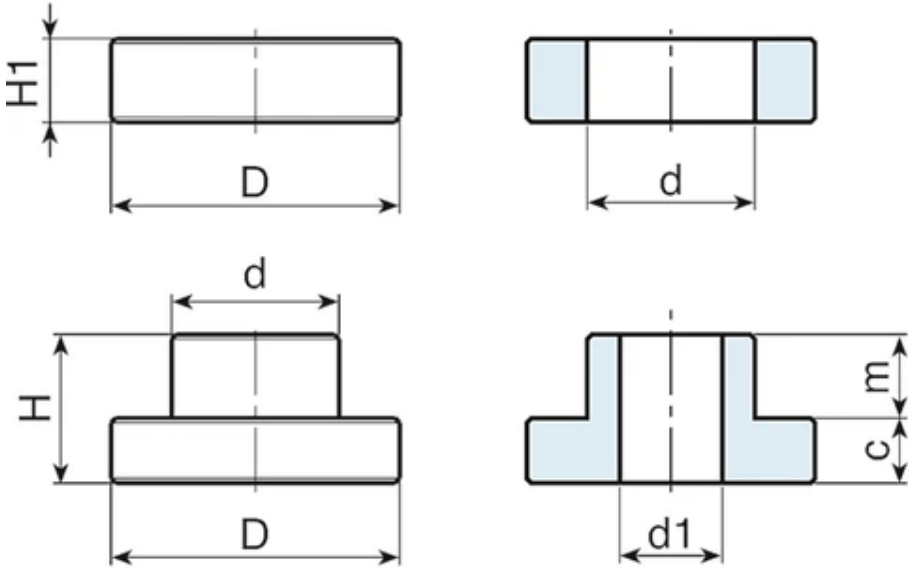
Materials:
Reinforced polyamide.
Resistant to oils and greases.

Surface finish:
Smooth.

Colour:
Black (RAL 9011).

Hole:
Smooth through hole obtained by moulding the plastic.

Special Requests:
None.



Code	art.	D	H	d	H1	m	c	d1	Weight (g)
S22931C.0001	S22931C.TG10	31	16	17.5	8.5	9	7	10.5	13