

19 SHORT-NECK WASHER PAIR  
Rondelle isolanti

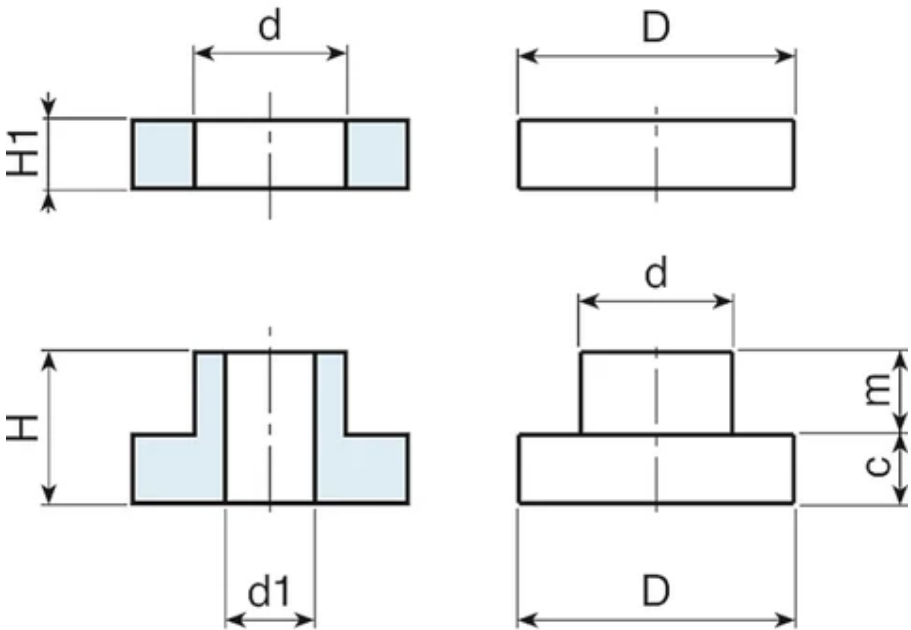
**Materials:**  
Reinforced polyamide.  
Resistant to oils and greases.

**Surface finish:**  
Smooth.

**Colour:**  
Black (RAL 9011).

**Hole:**  
Smooth through hole obtained by moulding the plastic.

**Special Requests:**  
None.



Code	art.	D	H	d	H1	m	c	d1	Weight (g)
S22820C.0001	S22820C.TG06	20	11	11	5	6.5	4.5	6.5	9