

## FEMALE CONNECTOR FOR WELDING MACHINE PANEL

Attacchi rapidi DINS

### Materials:

Phenolic resin.

Resistant to oils and greases.

Resistant to high temperatures.

### Surface finish:

Glossy.

### Colour:

Black (RAL 9011).

### Inserts:

(1) Brass insert with female connector EN 60794:12.

(4) F25-00:

Black-oxyde treated steel toothed washer DIN 6798.

(4) F35-00:

Black-oxyde treated steel corrugated washer DIN 137.

(4) F70-95:

Black-oxyde treated steel corrugated washer DIN 137.

(5) Yellow passivated steel threaded hexagon ring nut.

(6) Black-oxide treated steel split washer UNI 1751.

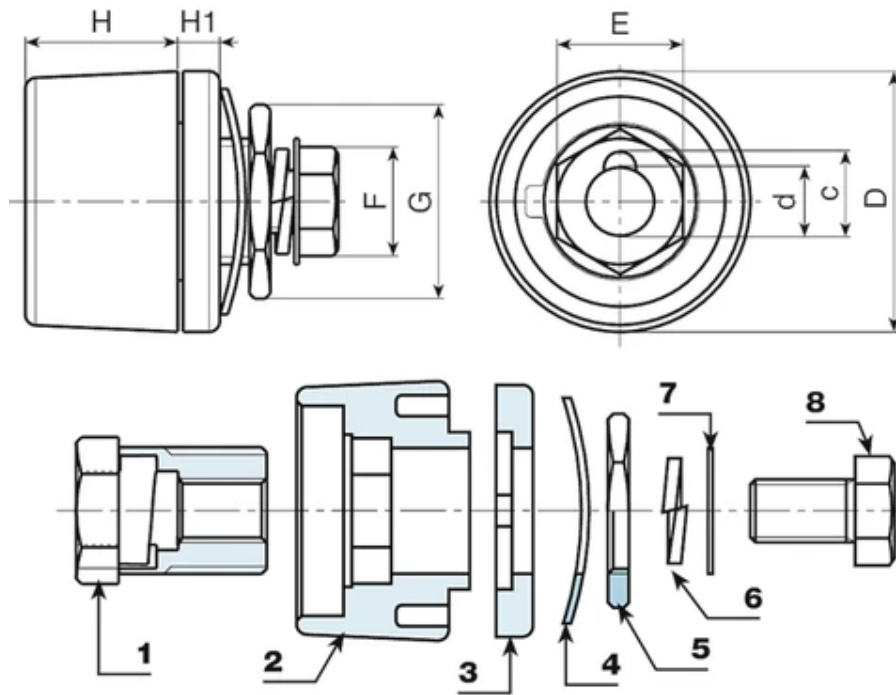
(7) Yellow passivated steel washer.

(8) Yellow passivated hex head screw DIN933/UNI 5739.

### Special Requests:

None.





Code	art.	D	H	H1	d	c	E	F	G	Weight (g)	Amp. Max
S111.0001	S111.F2500	33	14	4	9	11	14	13	22	50	200
S111.0008	S111.F3550	50.5	29	7	13	16	21	17	27	153	400
S111.0010	S111.F7095	50.5	29	7	13	16	24	19	32	202	500