

# Q264

+135°  
-30°

PA6  
+G.F.

RoHS  
COMPLIANT

## 17 6-LOBE WASHER

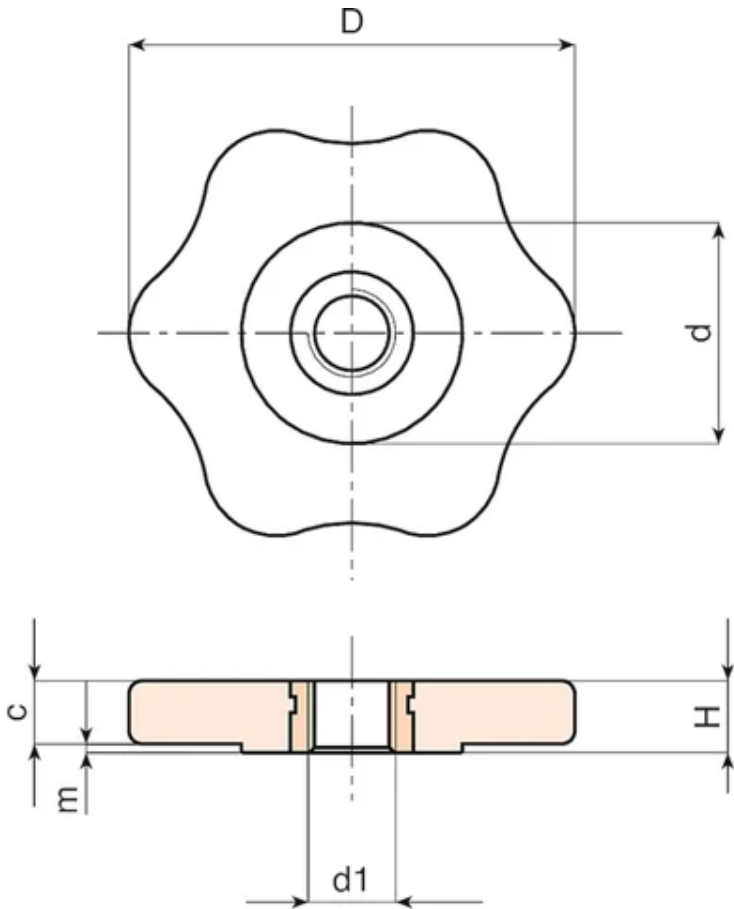
**Materials:**  
Reinforced polyamide.  
Resistant to oils and greases.

**Surface:**  
Satin.

**Colour:**  
Black (RAL 9011).

**Inserts:**  
Brass insert with threaded through hole (thread tolerance 6H).

**Special Requests:**  
Upon request and for special quantities inserts can be supplied in different materials.  
Upon request and for special quantities available in the colours indicated in the chart.



Code	art.	D	H	d	c	m	d1 6H	Weight (g)
Q26450.0002	Q26450.TM0601P	50	8	25	7	1	M6	18
Q26450.0003	Q26450.TM0801P	50	8	25	7	1	M8	18

Code	art.	D	H	d	c	m	d16H	Weight (g)
Q26450.0005	Q26450.TM1001P	50	8	25	7	1	M10	20