

17 KNURLED WASHER

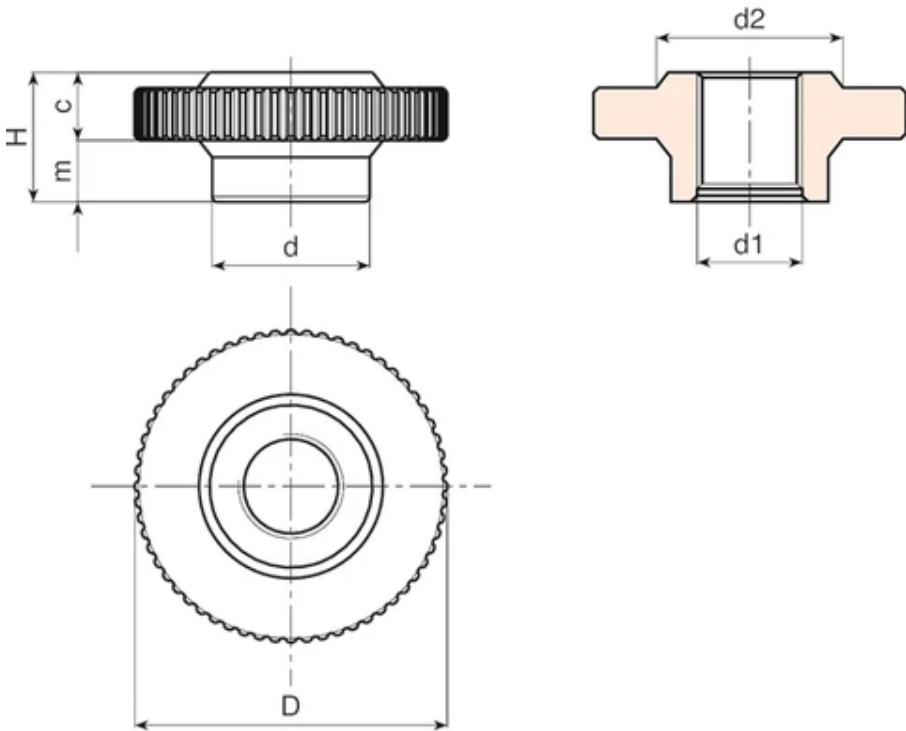
**Materials:**  
Reinforced polyamide.  
Resistant to oils and greases.

**Surface:**  
Satin.

**Colour:**  
Black (RAL 9011).

**Hole:**  
Threaded through hole obtained by moulding the plastic (tolerance not applicable).

**Special Requests:**  
Upon request and for special quantities hole d1 can be supplied to customer's drawing.



Code	art.	D	H	d	c	m	d2	d1	Weight (g)
Q26360.0002	Q26360.TM2001P	60	25	30	12	13	35	M20	38
Q26360.0003	Q26360.TM2401P	60	25	30	12	13	35	M24	35