

16

SMALL MOUNTING FOOT WITH STEEL ARTICULATED STEM TYPE B - BALL 12.4 AND NON-SLIP BASE

Piedi plastica - stelo snodato + antiscivolo

Materials:

Reinforced polyamide. Resistant to oils and greases.

Surface finish:

Satin.

Colour:

Black (RAL 9011).

Inserts:

Galvanised steel threaded and articulated stem (ball 12.4) with milled seat for wrench (type B) (thread tolerance 6g).

Non-slip base:

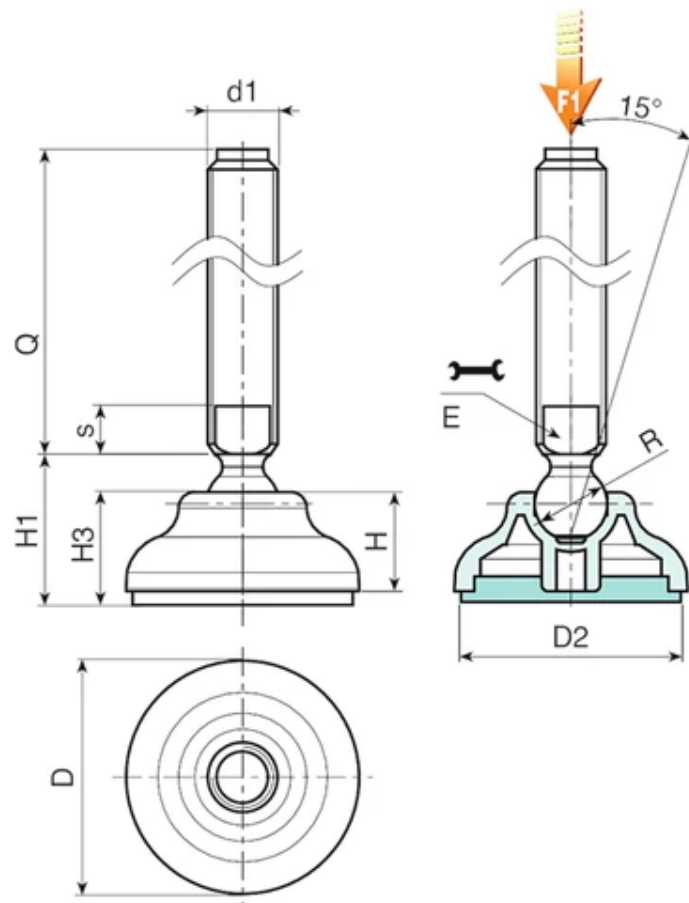
Non-slip base in thermoplastic rubber SBS 75 Shore, black RAL 9011. Resistant to oils and greases.

Special requests:

Upon request and for special quantities inserts can be supplied with customised lengths.

Upon request and for special quantities the foot can be supplied in Orange (RAL 2004).





Version P909: Mounting foot with stem type B (with milled seat for wrench) and ball 12.4 - with SBS non-slip base

Code	Art.	D	D2	H	H1	H3	E	s	R	d1 6g	Q	Weight (g)	F1 k(N)
P90960.0005	P90960.TM16X7001	60	59	20	29	22	13	7	12,5	M16	70	139	13
P90960.0006	P90960.TM16X9001	60	59	20	29	22	13	7	12,5	M16	90	165	13
P90960.0001	P90960.TM16X11001	60	59	20	29	22	13	7	12,5	M16	110	191	13
P90960.0002	P90960.TM16X13001	60	59	20	29	22	13	7	12,5	M16	130	217	13
P90960.0003	P90960.TM16X15001	60	59	20	29	22	13	7	12,5	M16	150	243	13
P90960.0004	P90960.TM16X17001	60	59	20	29	22	13	7	12,5	M16	170	270	13

Attention: The expressed load limit F1 is lower than the break load by 30% and is intended as static.
Customised stud length available for a minimum of 100 pieces.