

16 TEARDROP MOUNTING FOOT WITH GROUND FIXING AND STEEL ARTICULATED STEM TYPE B - BALL 12.4

Piedi plastica con fissaggio laterale-stelo snodato

Materials:

Reinforced polyamide.

Resistant to oils and greases.

Surface finish:

Satin.

Colour:

Black (RAL 9011).

Inserts:

P704:

Galvanised steel threaded and articulated stem (ball 12.5) with milled seat for wrench (type B) (thread tolerance 6g).

P704CIN:

Stainless steel threaded and articulated stem (ball 12.5) with milled seat for wrench (type B) (Aisi 303) (thread tolerance 6g).

Ground fixing:

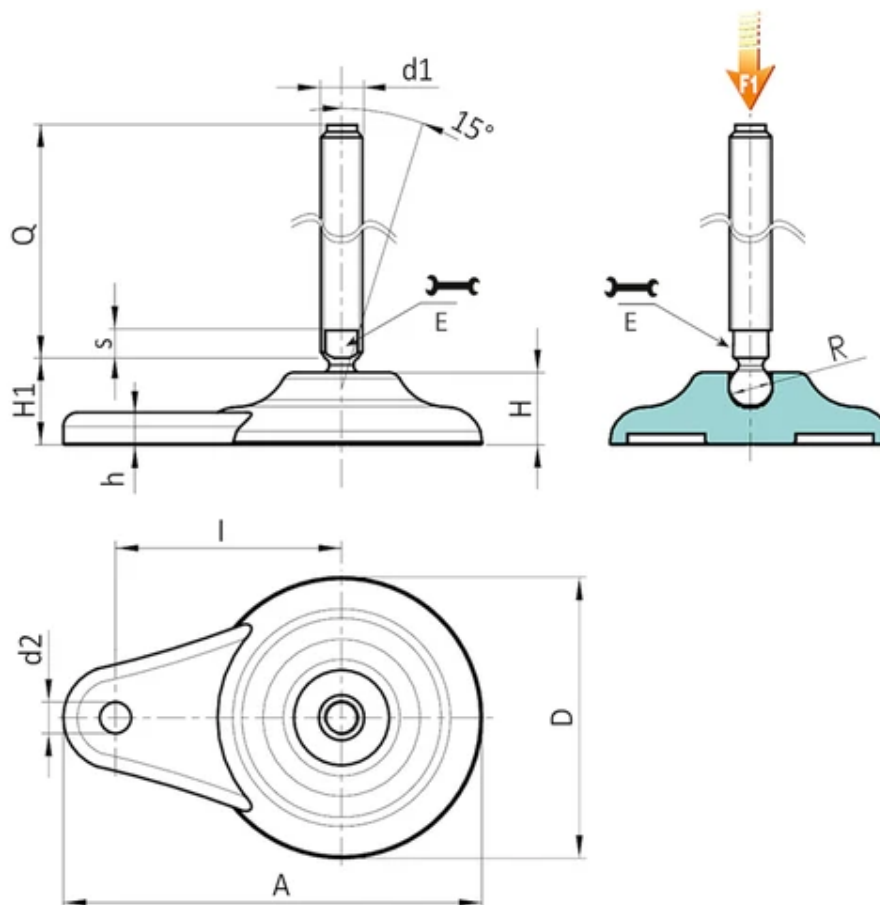
Through hole obtained by moulding the plastic.

Special requests:

Upon request and for special quantities inserts can be supplied with customised lengths.

Upon request and for special quantities the foot can be supplied in Orange (RAL 2004).





Version P704: Teardrop mounting foot with ground fixing - stem type B (with milled seat for wrench) and ball 12.5

Code	Art.	D	H	l	H1	h	A	E	s	d2	R	d1 6g	Q	Weight (g)	F1 (kN)
P704080.0001	P704080.TM16X7001	80	20	65	26	9	120	13	7	9	12,4	M16	70	156	10
P704080.0002	P704080.TM16X9001	80	20	65	26	9	120	13	7	9	12,4	M16	90	182	10
P704080.0003	P704080.TM16X11001	80	20	65	26	9	120	13	7	9	12,4	M16	110	208	10
P704080.0005	P704080.TM16X13001	80	20	65	26	9	120	13	7	9	12,4	M16	130	234	10
P704080.0007	P704080.TM16X15001	80	20	65	26	9	120	13	7	9	12,4	M16	150	260	10
P704080.0009	P704080.TM16X17001	80	20	65	26	9	120	13	7	9	12,4	M16	170	286	10

Attention: The expressed load limit F1 is lower than the break load by 30% and is intended as static.
Customised stud length available for a minimum of 100 pieces.

Version P704CIN: Teardrop mounting foot with ground fixing - stem type B - stainless steel - (with milled seat for wrench) and ball 12.5

Code	Art.	D	H	l	H1	h	A	E	s	d2	R	d1 6g	Q	Weight (g)	F1 (kN)
P704080.0004	P704080.TM16X11001CIN	80	20	65	26	9	120	13	7	9	12,4	M16	110	130	10
P704080.0006	P704080.TM16X13001CIN	80	20	65	26	9	120	13	7	9	12,4	M16	130	156	10
P704080.0008	P704080.TM16X15001CIN	80	20	65	26	9	120	13	7	9	12,4	M16	150	182	10
P704080.0010	P704080.TM16X17001CIN	80	20	65	26	9	120	13	7	9	12,4	M16	170	208	10

Attention: The expressed load limit F1 is lower than the break load by 30% and is intended as static.
Customised stud length available for a minimum of 100 pieces.