

15

VERTICAL ZAMAK HINGE WITH SINGLE THREADED MOUNT

Cerniere in zama

Materials:

(1-2) Die-cast zamak alloy (zinc, aluminium and copper alloy).

Surface finish:

Light sandblasting.

Colour:

(01) Black epoxy powder coated (RAL 9011).

(Z) Standard blue galvanising.

Inserts:

(3) Stainless steel hinge pivot pin (Aisi 304).

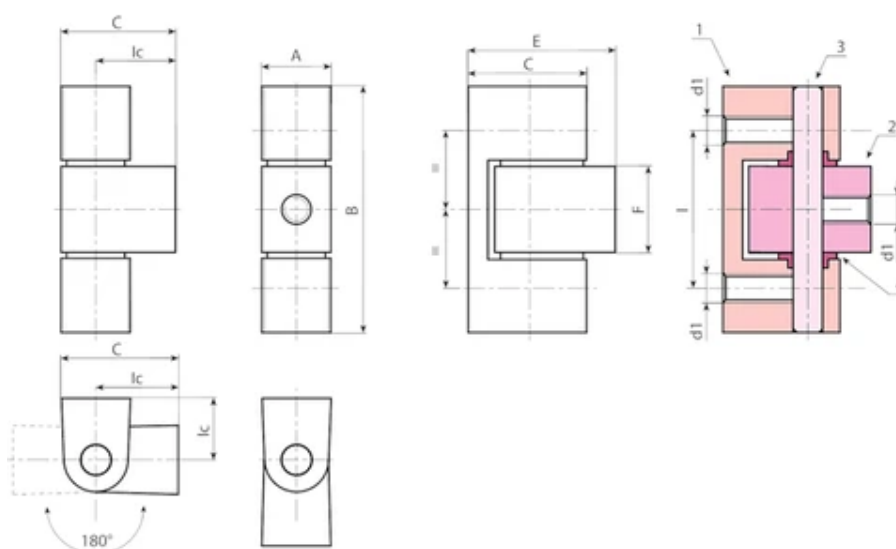
(4) Natural PA6 spacer bush.

Holes:

Female threaded holes M06 obtained by moulding.

Special Requests:

None.



Black coated version code 01 ending

Code	Art.	I	Ic	A	B	C	E	F	d1	Weight (g)
O520032.0001	O520032.ZM0601	32	12	14	50	19	24	17.5	M6	78

Galvanised version code Z ending

Code	Art.	I	Ic	A	B	C	E	F	d1	Weight (g)
O520032.0002	O520032.ZM06Z	32	12	14	50	19	24	17.5	M6	78