

15

FLAT ZAMAK HINGE WITH THROUGH HOLES

Cerniere in zama

Materials:

Die-cast zamak alloy (zinc, aluminium and copper alloy).

Surface finish:

Satin.

Colour:

Natural.

Inserts:

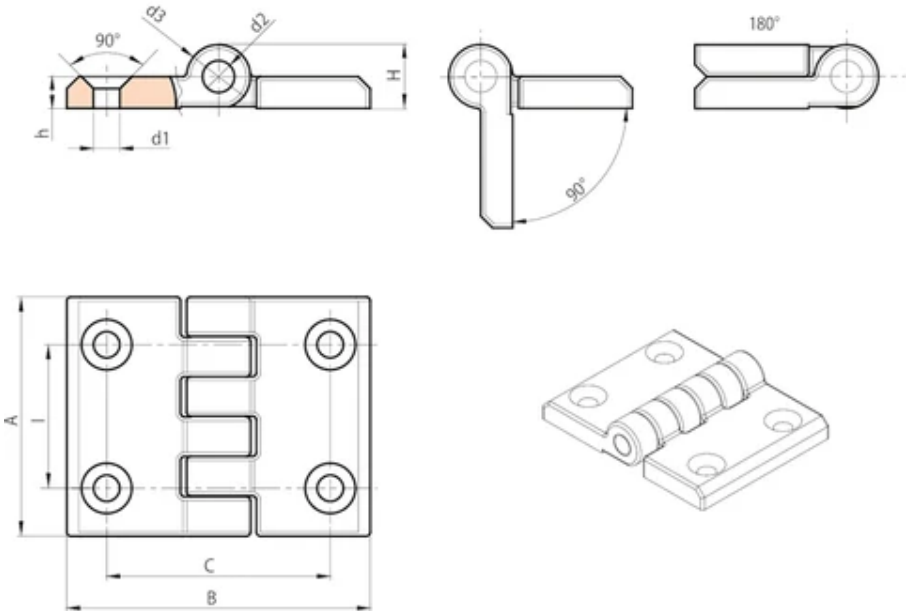
Galvanised steel pivot pin (C45).

Holes:

Through holes obtained by moulding. 90° countersunk hole for UNI 5933 – UNI 6109 screws.

Special Requests:

None.



Code	Art.	I	C	A	B	H	h	d2	d3	d1	Weight (g)
O30536.0001	O30536.ZG06.5PAL	36	56	60	76	16	8	8	16	6,5	250