

## LARGE WING NUT WITH INSERT AND THREADED THROUGH HOLE

Galletti standard

### Materials:

Reinforced polyamide.

Resistant to oils and greases.

### Surface finish:

Satin.

### Colour:

Black (RAL 9011).

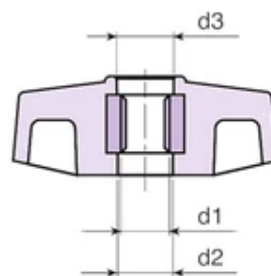
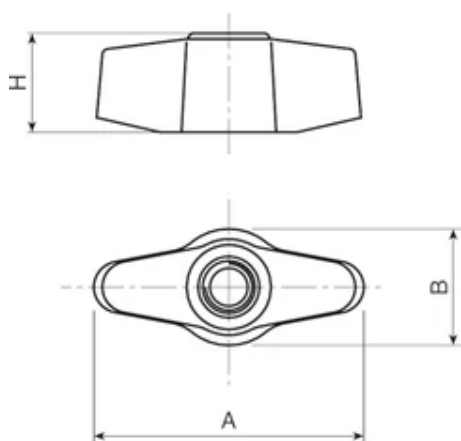
### Inserts:

Galvanised steel insert with threaded through hole (thread tolerance 6H).

### Special Requests:

Upon request and for special quantities inserts can be supplied in different materials.

Upon request and for special quantities available in the colours indicated in the chart (attention: reduced range).



Code	Art.	A	B	H	d2	d3	d1 6H	Weight (g)
L75548.0001	L75548.TM0601	45	20	17	9.5	10	M6	17
L75548.0002	L75548.TM0801	45	20	17	9.5	10	M8	16