

12

28 mm WING NUT WITH THREADED STUD

Galletti standard

Materials:

Reinforced polyamide.

Resistant to oils and greases.

Surface finish:

Satin.

Colour:

Black (RAL 9011).

Inserts:

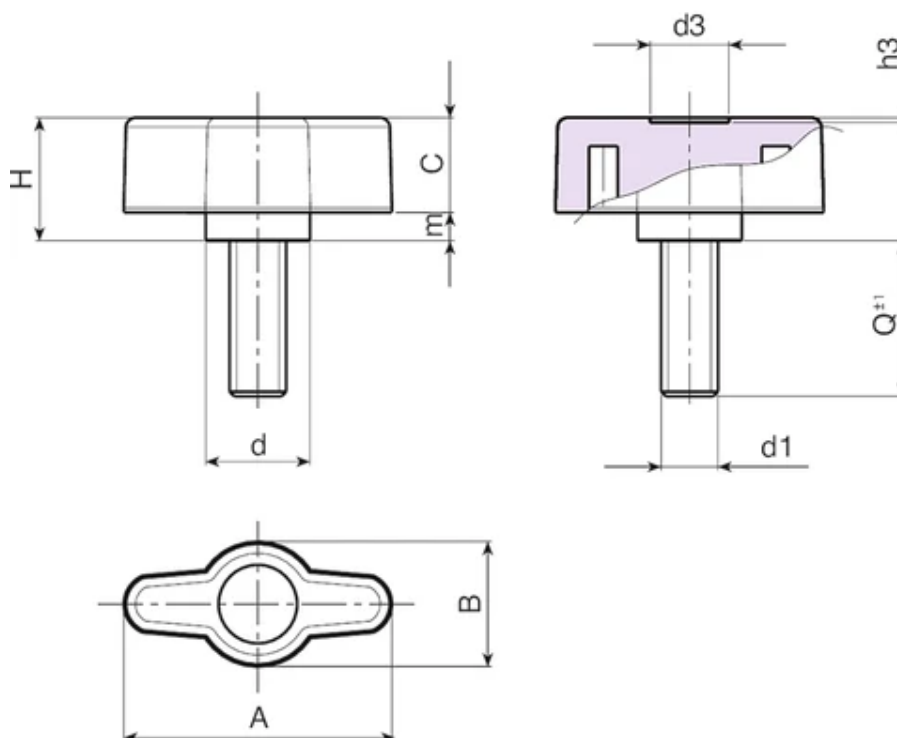
Galvanised steel threaded stud (thread tolerance 6g).

Special Requests:

Upon request and for special quantities inserts can be supplied with customised lengths.

Upon request and for special quantities inserts can be supplied in different materials.

Upon request and for special quantities available in the colours indicated in the chart (attention: reduced range).



Code	Art.	A	B	H	m	c	d	d3	h3	LM	d1 6g	Q	Weight (g)
L74928.0024	L74928.TM06X4001	28	13	13	3	10	11	8	0.5	75	M6	40	11

Customised stud lengths available for a minimum of 150 pieces.
LM = Maximum mouldable length.