

FULL STAINLESS STEEL WING NUT WITH FEMALE THREADED HOLE

Galletti in acciaio

Materials:

Precision-cast stainless steel, (Aisi 304).

Surface finish:

Satin.

Colour:

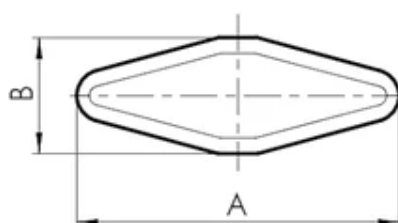
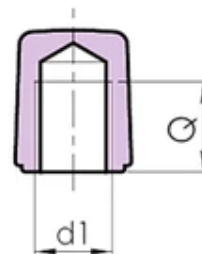
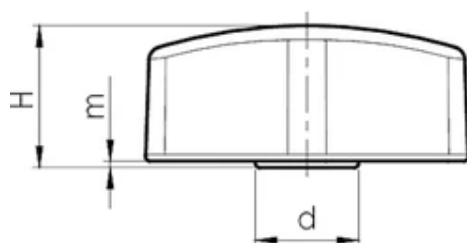
Natural

Hole:

Female threaded hole, obtained by further processing (thread tolerance 6H).

Special Requests:

Upon request and for special quantities the wing nut can be supplied in Aisi 316 stainless steel.



Code	Art.	A	B	H	m	d	d16H	Q	Weight (g)
L25025.0001	L25025.HM06CIN	25	9	11	0,5	8	M6	6	8
L25030.0001	L25030.HM08CIN	30	11	13.5	0,5	10	M8	8	16

Code	Art.	A	B	H	m	d	d16H	Q	Weight (g)
L25036.0001	L25036.HM10CIN	36	13	15.5	0,5	12	M10	9	27