

LOBED HANDWHEEL FOR INDICATOR

Pomelli con sede per indicatore gravitazionale

Materials:

Reinforced polyamide. Resistant to oils and greases.

Surface finish:

Satin.

Colour:

Black (RAL 9011).

Mountable indicator:

Gravity position indicator model K650080. The indicator can be only used in a vertical position (horizontal machine axis). The indicator must be purchased separately. For further information see article K650.

Insert:

Galvanised steel insert with smooth through bore (tolerance H10) with key according to the dimension of the bore.

Indicator fixing method:

Fix the indicator with a threaded grub screw M05 (not supplied) to be inserted in the special bore M05.

Special Requests:

On request and with a minimum of 50 pieces, the inserts can be supplied with the hole d1 with H7 tolerance and black-oxide finish.

Upon request and for special quantities inserts can be supplied with custom hole diameter d1.

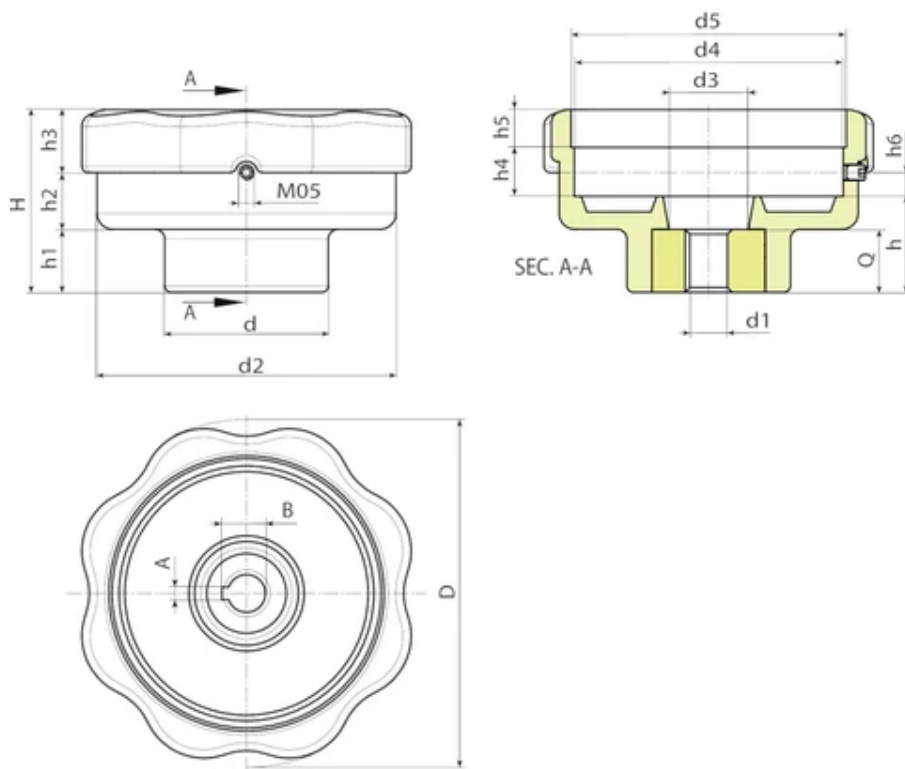
Upon request and for special quantities inserts can be supplied in different materials.

Combinations Diameters/Indicators:

d5=52.4 --> K650050

d5=87.4 --> K650080 or K660080





Code	art.	D	H	h	h1	h2	h3	h4	h5	h6	d	d2	d3	d4	d5	A	B
K170110.0001	K170110.T80D1201H	110	58	30.5	20	18	20	15.5	12	7.5	52	95	25	85.5	87,4	4	13.1

Code	art.	d1 H10	Q	Weight (g)
K170110.0001	K170110.T80D1201H	12	20	230