

10 PLASTIC CAM FOR SIMPLE LATCHING

Chiusure in plastica

This cam can be used in combination with any handwheel with stud. In this way, as illustrated in the sketch to the side, the assembly becomes a simple latch for securing doors. Turning the handwheel also rotates the cam, which, being a spiral shape, varies the grip thickness to latch onto the door.

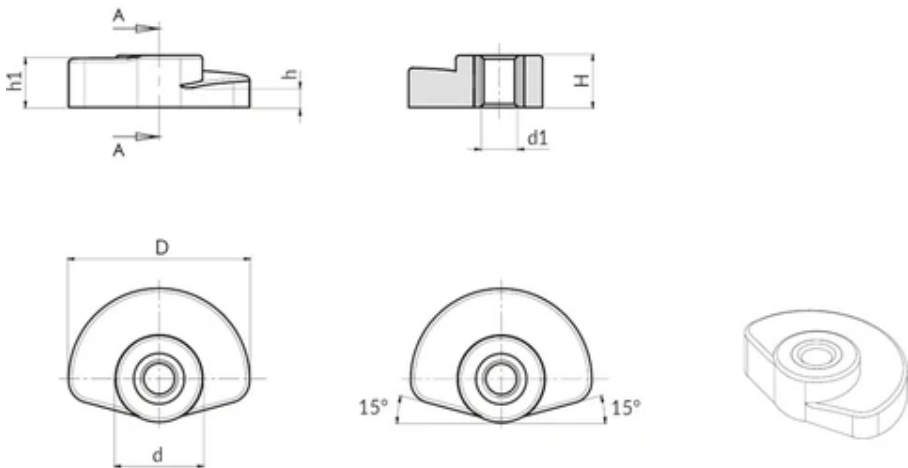
**Materials:**  
Reinforced polyamide.  
Resistant to oils and greases.

**Surface finish:**  
Satin.

**Colour:**  
Black (RAL 9011).

**Inserts:**  
Brass insert with threaded through hole (thread tolerance 6H).

**Special Requests:**  
None.



Code	art.	D	d	H	h	h1	d1 6H	Weight (g)
J30525.0001	J30525.TM0501	25	12	7,2	3	6,8	M5	3