

08

KNURLED SOLID HANDWHEEL WITH FEMALE THREADED INSERT  
Vol. Zigrinati foro cieco

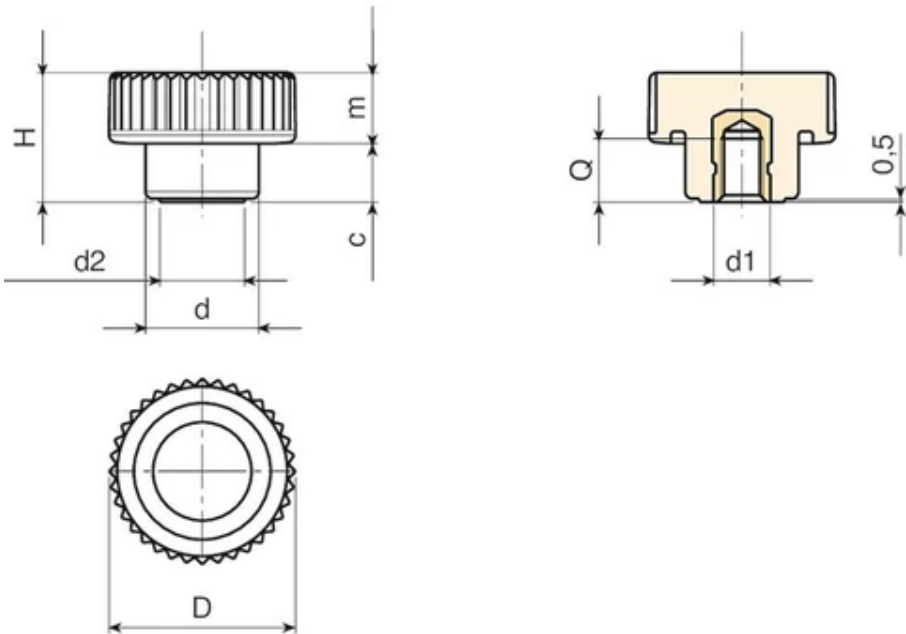
**Materials:**  
Reinforced polyamide.  
Resistant to oils and greases.

**Surface finish:**  
Satin.

**Colour:**  
Black (RAL 9011).

**Inserts:**  
Brass insert with female threaded hole (thread tolerance 6H).

**Special Requests:**  
Upon request and for special quantities inserts can be supplied in different materials.  
Upon request and for special quantities available in the colours indicated in the chart.



Code	art.	D	H	d	m	c	d2	d1 6H	Q	Weight (g)
H75726.0007	H75726.TM0501	26	18	16	8.5	9.5	12	M5	6	9

Code	art.	D	H	d	m	c	d2	d16H	Q	Weight (g)
H75726.0008	H75726.TM0601	26	18	16	8.5	9.5	12	M6	8	10
H75726.0009	H75726.TM0801	26	18	16	8.5	9.5	12	M8	8	11