

07

CYLINDRICAL HANDWHEEL WITH SMOOTH HOLE INSERT

Volantini cilindrici

Materials:

Reinforced polyamide.

Resistant to oils and greases.

Surface finish:

Satin.

Colour:

Black (RAL 9011).

Inserts:

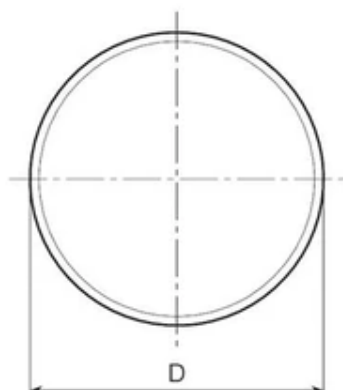
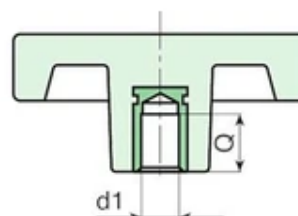
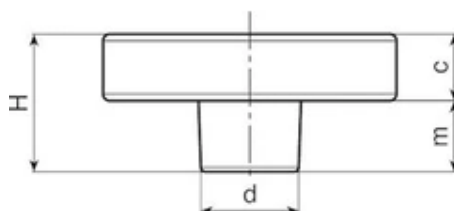
Galvanised steel insert with smooth through bore (tolerance H10).

Special requests:

Upon request and for special quantities inserts can be supplied with custom hole diameter d1.

Upon request and for special quantities inserts can be supplied in different materials/with different coatings.

Upon request and for special quantities available in the colours indicated in the chart.



Code	art.	D	H	d	c	m	Dm	d1 H10	Q	Weight (g)
G79250.0001	G79250.TD0601	50	30	22	15	15	12	06	20	62
G79266.0001	G79266.TD1001	65	30	22	15	15	12	10	20	78

Attention: for a minimum of 200 pieces the diameter d1 can be produced with the requested dimensions with H10 tolerance.

Dm = Maximum obtainable diameter for subsequent machining (widening)