

06

HIGH CLAMPING STAR HANDWHEEL WITH THREADED STUD

Volantini a croce

Materials:

Reinforced polyamide.

Resistant to oils and greases.

Surface finish:

Satin.

Colour:

Black (RAL 9011).

Inserts:

Nickel-plated brass insert with threaded stud (thread tolerance 6g).

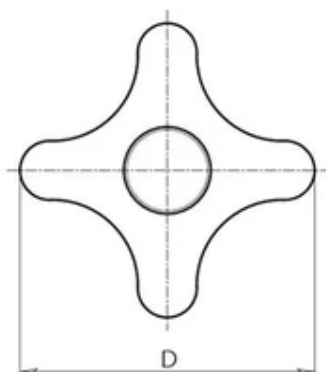
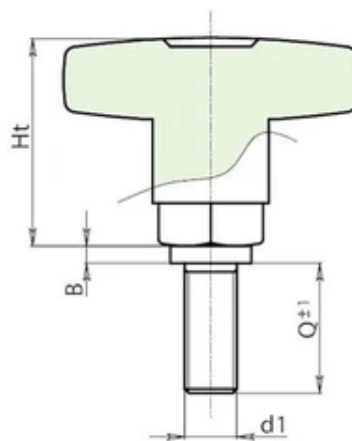
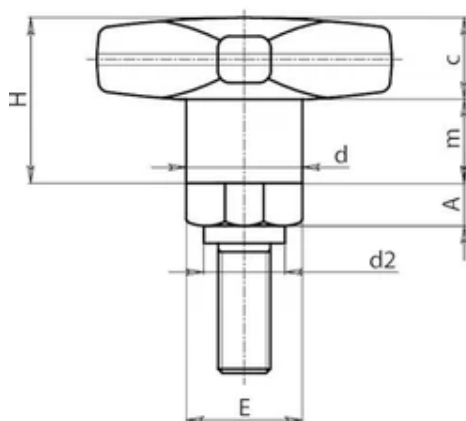
Special Requests:

Upon request and for special quantities inserts can be supplied with customised lengths.

Upon request and for special quantities available in the colours indicated in the chart (attention: reduced range).

ATTENTION:

For a standard lock turn the knob. For a tighter lock, use a hex wrench to tighten the hex nut.



Code	Art.	D	d	d2	H	Ht	A	B	E	m	c	d16g	Q	Weight (g)
F27050.0001	F27050.TM10X2501	50	18	15	24	34	10	4	17	15	14	M10	25	97