

06

## HIGH CLAMPING STAR HANDWHEEL WITH THREADED INSERT

Volantini a croce

### Materials:

Reinforced polyamide.

Resistant to oils and greases.

### Surface finish:

Satin.

### Colour:

Black (RAL 9011).

### Inserts:

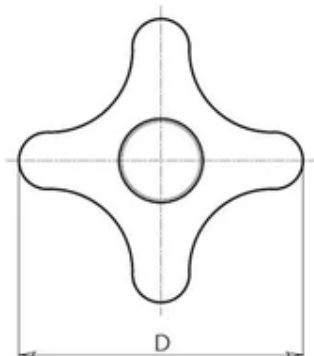
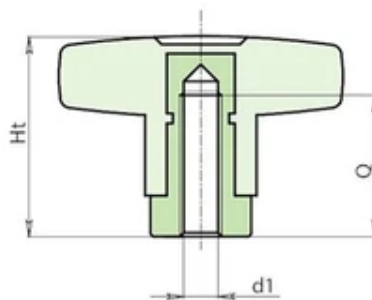
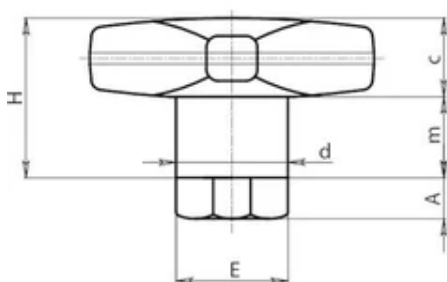
Nickel-plated brass insert with female threaded hole (thread tolerance 6H).

### Special Requests:

Upon request and for special quantities available in the colours indicated in the chart (attention: reduced range).

### ATTENTION:

For a standard lock turn the knob. For a tighter lock, use a hex wrench to tighten the hex nut.



Code	Art.	D	d	H	Ht	A	E	m	c	d16H	Q	Weight (g)
F26950.0001	F26950.TM0601	50	18	29	39	10	17	15	14	M6	25	72
F26950.0002	F26950.TM0801	50	18	29	39	10	17	15	14	M8	25	67
F26950.0003	F26950.TM1001	50	18	29	39	10	17	15	14	M10	25	60