

LIGHTWEIGHT CONTROL HANDWHEEL

Volantini di manovra vari

Materials:

Reinforced polyamide.

Resistant to oils and greases.

Surface finish:

Satin.

Colour:

Black (RAL 9011).

Main insert:

Galvanised steel insert with smooth through bore (tolerance H10).

Fixing method:

For fixing systems, or execution of keyways or square holes, please refer to the technical notes attached to the catalogue.

Special requests:

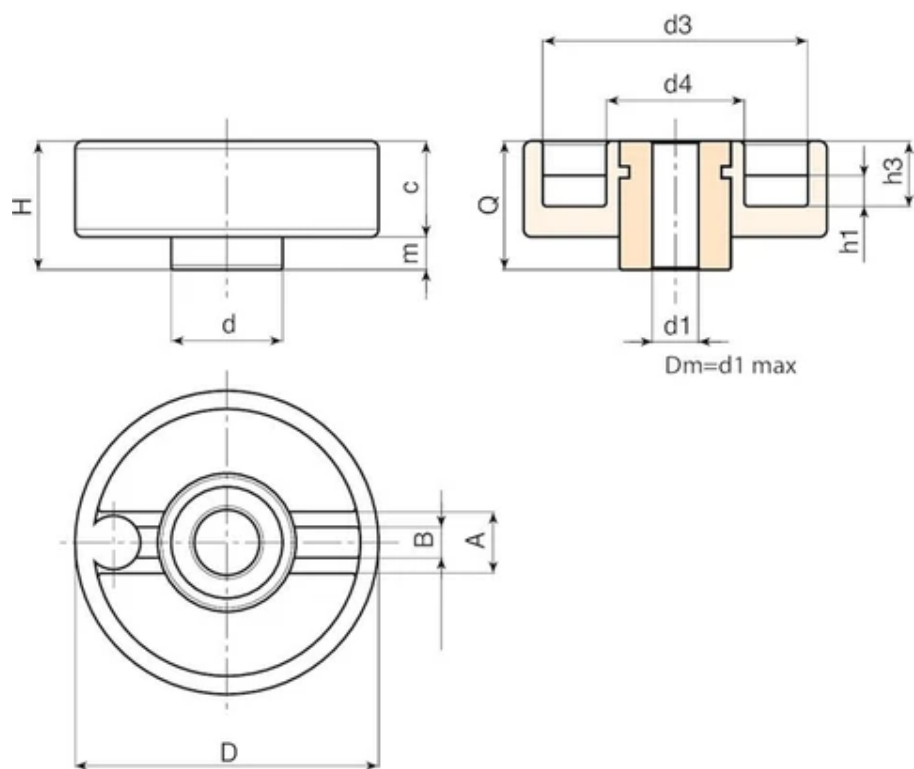
On request and with a minimum of 50 pieces, the inserts can be supplied with the hole d1 with H7 tolerance and black-oxide finish.

Upon request and for special quantities inserts can be supplied with custom hole diameter d1.

Upon request and for special quantities inserts can be supplied in different materials/with different coatings.

Upon request and for special quantities available in the colours indicated in the chart.





Code	Art.	D	H	d	c	m	h1	h3	A	B	d3	d4	Dm	d1 H10	Q	Weight (g)
D78280.0001	D78280.TD0801	80	34	29	25	9	8	17	16	7.5	69	36	20	8	34	230
D78280.0002	D78280.TD1201	80	34	29	25	9	8	17	16	7.5	69	36	20	12	34	227

Attention: For a minimum of 50 pieces the diameter d1 can be customised (hole tolerance H10 galvanised and H7 black-oxide treated).
Dm = Maximum obtainable diameter for subsequent machining (widening).