

SOLID CONTROL HANDWHEEL WITH REVOLVING HANDLE AND LOCKING KNOB

Volantini con manico girevole

Materials:

Reinforced and stabilized polyamide. Resistant to oils and greases.

Surface finish:

Satin.

Handwheel and handle colour:

Black (RAL 9011).

Central cap:

Grey polyamide (RAL 7035). 13).

Main insert:

Galvanised steel insert with smooth through bore (tolerance H10).

Lateral insert:

Brass insert with threaded through hole.

Lateral handle:

Revolving handle art. M144.

Locking knob:

Black cylindrical knob Ral 9011 art. G793-36 (Ø 100 art. G732-25) with threaded stud.

Fixing method:

For fixing systems, or execution of keyways or square holes, please refer to the technical notes attached to the catalogue.

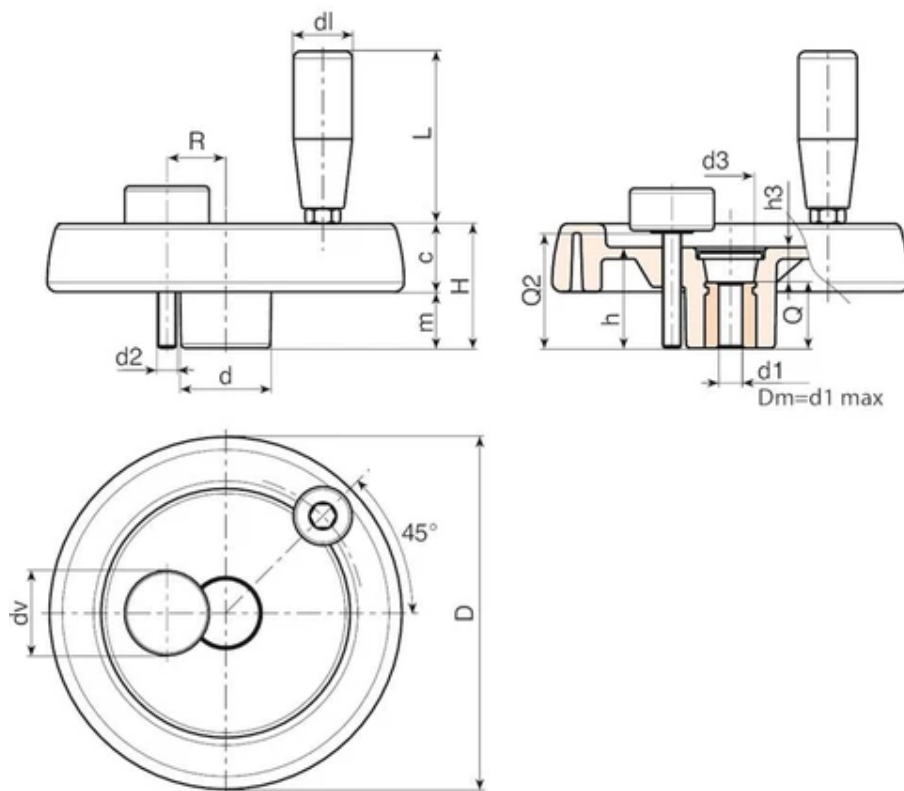
Special requests:

On request and with a minimum of 50 pieces, the inserts can be supplied with the hole d1 with H7 tolerance and black-oxide finish.

Upon request and for special quantities inserts can be supplied with custom hole diameter d1.

Upon request and for special quantities inserts can be supplied in different materials/with different coatings.





Note: the article codes in the table are incomplete. Communicate the R and Q2 values to obtain the full code. (1/2)

Code	Art.	D	H	h	d	m	c	d3	h3	R	d2	Q2	dl	L	Dm	d1 H10	Q
C970100...	C970100.TP0501P...	100.5	39	34	30.5	18	21	16.5	10	20÷23	M6	A.R.	20	56	16	5	24
C970125...	C970125.TP0501P...	125	44	37	36	20	24	26	13	23÷25	M8	A.R.	21	65	18	5	24
C970150...	C970150.TD0801P...	150	54	44	38	25	29	26	12	25÷28	M8	A.R.	21	65	22	8	32
C970175...	C970175.TD0801P...	173	57	47	40	25.5	31.5	26	15	26÷36	M8	A.R.	23	76	22	8	32
C970200...	C970200.TD0801P...	204	69	49.5	45	24	35	26.5	13.5	28÷42	M8	A.R.	25	86	28	8	36
C970250...	C970250.TD0801P...	251	66,5	56,5	60	27,5	39	36	20,5	36÷50	M8	A.R.	25	86	28	8	36

Attention: For a minimum of 50 pieces the diameter d1 can be customised (hole tolerance H10 galvanised and H7 black-oxide treated).
Dm = Maximum obtainable diameter for subsequent machining (widening).
dv = 36 mm (Ø 100 dv = 25 mm). A.R. = On request.

Code	Art.	Weight (g)
C970100...	C970100.TP0501P...	252
C970125...	C970125.TP0501P...	410
C970150...	C970150.TD0801P...	636
C970175...	C970175.TD0801P...	812
C970200...	C970200.TD0801P...	1040
C970250...	C970250.TD0801P...	1590

Attention: For a minimum of 50 pieces the diameter d1 can be customised (hole tolerance H10 galvanised and H7 black-oxide treated).
Dm = Maximum obtainable diameter for subsequent machining (widening).
dv = 36 mm (Ø 100 dv = 25 mm). A.R. = On request.