

W298



Al

PA6
+G.F.



ALUMINIUM CONTROL HANDWHEEL WITH SMOOTH BORE AND REVOLVING FOLDING HANDLE

Materials:

Aluminium.

Surface finish:

Low roughness turned surface.

Colour:

Nickel plated (galvanic treatment).

Alternative colours (min. 50 pieces):

Black epoxy powder coated:
(replace the final letter of the code (H) with letter V (W298100.AD10V).

Cap:

Central cap in black polyamide (RAL 9011 code 01).

Alternative cap colours:

The central cap for the black handwheel will be grey (RAL 7035 code no. 13).

Lateral handle:

Revolving, folding handle art. M136 [page].

Hole:

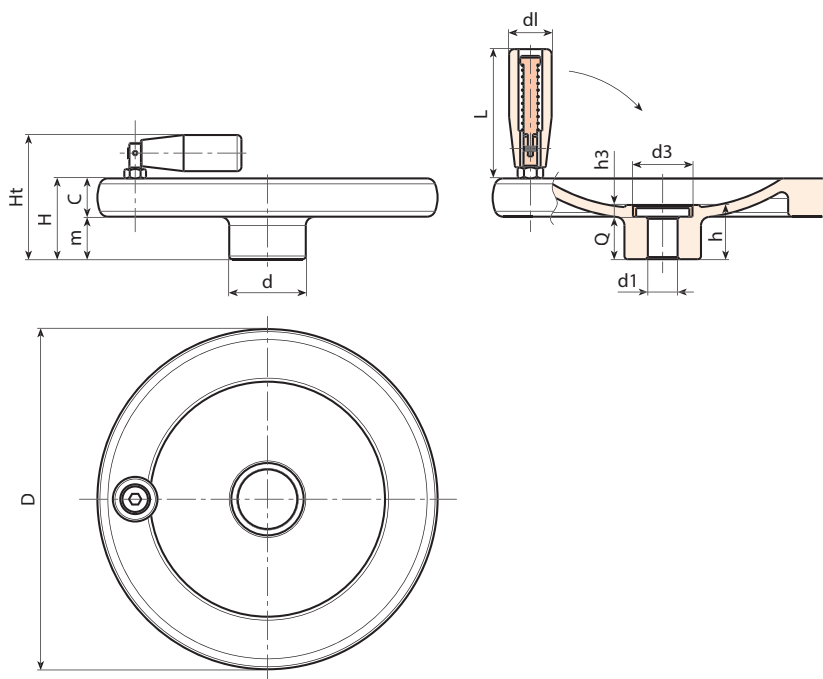
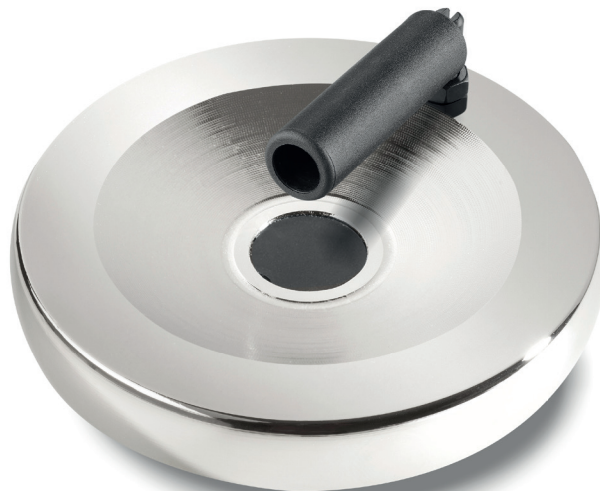
Smooth through hole, remachined with H7 tolerance.

Special Requests:

- Upon request and for special quantities handwheels can be supplied on customer's drawing with hole diameter d1.

Fixing method:

For fixing systems, or execution of keyways or square holes, please refer to the technical notes attached to the catalogue.



Code	Art.	d	D	H	m	c	h	h3	d3	d1 _{H7}	Q	dl	L	g
W298080.0001	W298080.AD08H	25	80	26	14	12	21	5.5	20	8	15.5	20	56	181
W298100.0001	W298100.AD10H	28	100	28	14	14	21.5	5.5	20	10	16	20	56	279
W298130.0002	W298130.AD12H	36	130	35	19	16	25.5	5.5	28	12	20	25	76	506
W298160.0001	W298160.AD14H	36	160	38	20	18	25.5	5.5	28	12	20	25	76	756
W298200.0001	W298200.AD16H	42	200	44	24	20	31.5	6	34	16	25.5	26	89	1337

Attention: For a minimum of 50 pieces the diameter d1 can be customised (hole tolerance H7).