

W296

ALUMINIUM CONTROL HANDWHEEL WITH SMOOTH BORE



Al

PA6
+G.F.



Materials:

Aluminium.

Surface finish:

Low roughness turned surface.

Colour:

Nickel plated (galvanic treatment).

Alternative colours (min. 50 pieces):

Black epoxy powder coated:
(replace the final letter of the code (H) with letter V (W296100.
AD10V).

Cap:

Central cap in black polyamide (RAL 9011 code 01).

Alternative Cap colours:

The central cap for the black handwheel will be grey (RAL 7035 code
no. 13).

Hole:

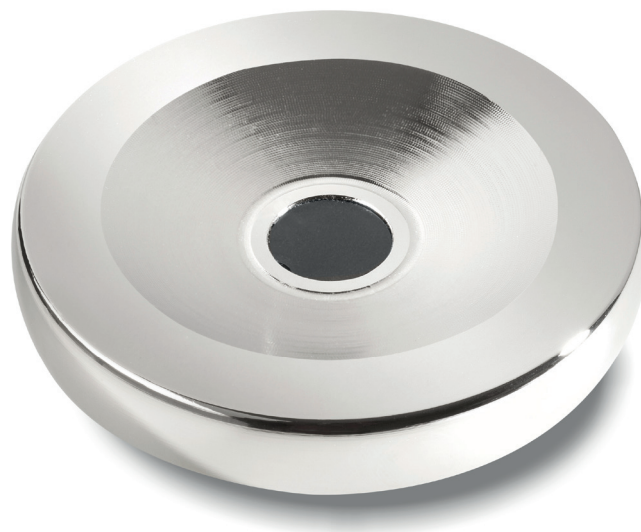
Smooth through hole, remachined with H7 tolerance.

Fixing method:

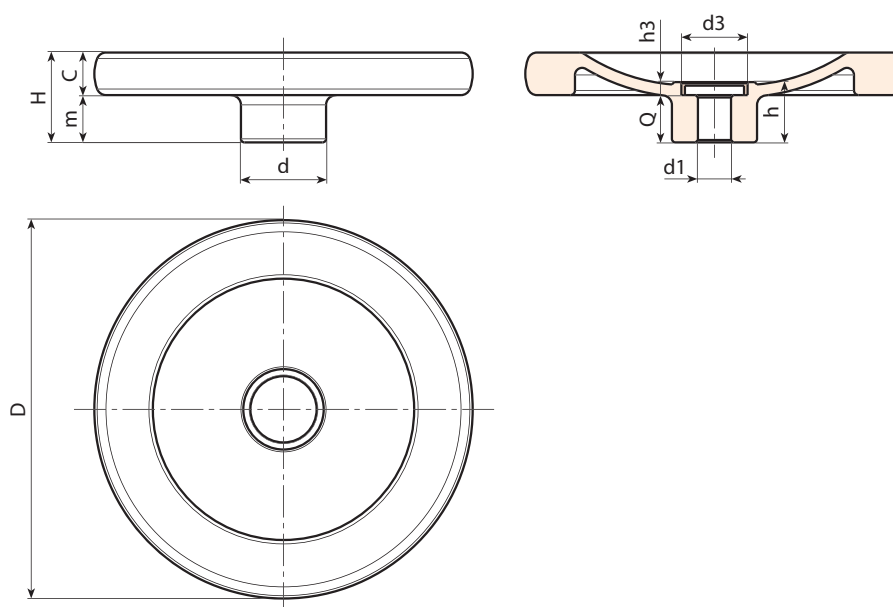
For fixing systems, or execution of keyways or square holes, please
refer to the technical notes attached to the catalogue.

Special Requests:

- Upon request and for special quantities handwheels can be
supplied on customer's drawing with hole diameter d1.



03



Code	Art.	d	D	H	m	c	h	h3	d3	d1 _{H7}	Q	g
W296080.0001	W296080.AD08H	25	80	26	14	12	21	5.5	20	8	15.5	142
W296100.0001	W296100.AD10H	28	100	28	14	14	21.5	5.5	20	10	16	240
W296130.0001	W296130.AD12H	36	130	35	19	16	25.5	5.5	28	12	20	435
W296160.0001	W296160.AD14H	36	160	38	20	18	25.5	5.5	28	14	20	685
W296200.0001	W296200.AD16H	42	200	44	24	20	31.5	6	34	16	25.5	1185

Attention: For a minimum of 50 pieces the diameter d1 can be customised (hole tolerance H7).