

# S117



## FEMALE CONNECTOR FOR PANEL TP (SUITABLE FOR INVERTER ONLY)

### Materials:

(2-3) Reinforced polyamide.  
Resistant to oils and greases.

### Surface finish:

Satin.

### Colour:

Black (RAL 9011).

### Inserts:

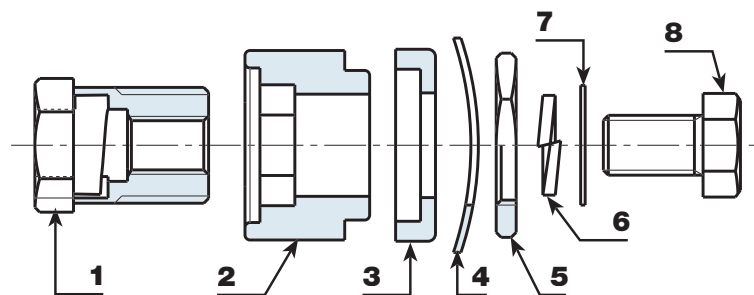
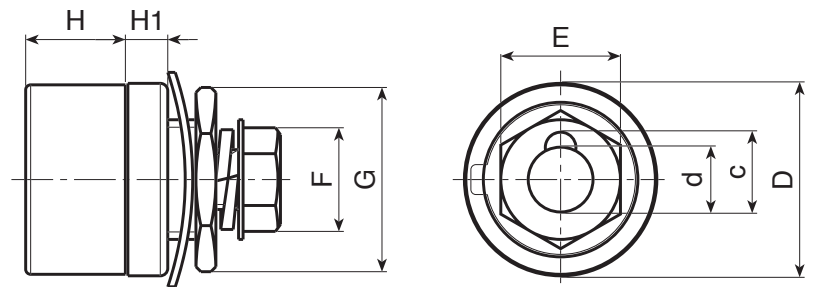
- (1) Brass insert with female connector UNI.
- (4) Black-oxide treated steel corrugated washer DIN 137.
- (5) Yellow passivated steel threaded hexagon ring nut.
- (6) Black-oxide treated steel split washer UNI 1751.
- (7) Yellow passivated steel washer.
- (8) Yellow passivated hex head screw DIN933/UNI 5739.

### Special Requests:

- None.



S117+S112



19

| Code      | art.       | D  | H  | H1 | d  | c  | E  | F  | G  | 9   | Amp. Max |
|-----------|------------|----|----|----|----|----|----|----|----|-----|----------|
| S117.0001 | S117.F3550 | 38 | 20 | 8  | 13 | 16 | 21 | 17 | 27 | 121 | 200      |