

PEPFZE13-R12,4

GALVANISED STEEL THREADED STEM TYPE A - WITH JOINT 12.4 AND HEXAGONAL BASE 13 - OBTAINED BY COLD MOULDING

+200°
-40°

C10

RoHS
COMPLIANT

Materials:
Steel with strength class 4.8.

Surface finish:
Smooth.

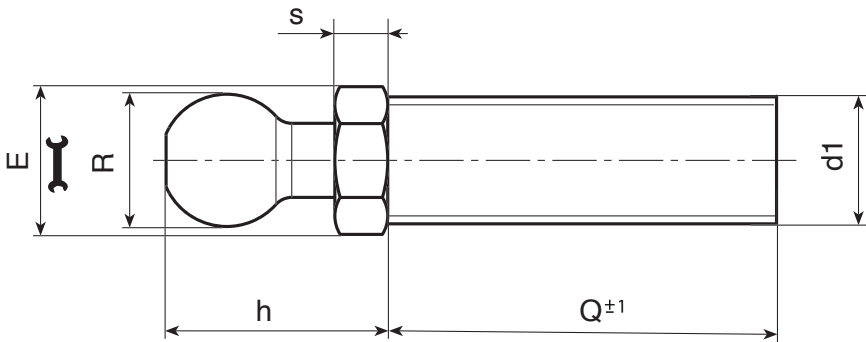
Colour:
Blue galvanising.


Thread:
Moulded stem with hexagonal base (type A) with rolled thread (thread tolerance 6g).

Special requests:

- Upon request and for a minimum quantity of 30,000 pieces, inserts can be supplied with length to customer's drawing.

Compatibility with bases:
These stems are compatible with the following foot bases:
PIE.040S12,4 • PIE.050S12,4 • PIE.060S12,4 • PIE.080S12,4 • PIE.700080S12,4



Code	Art.	E	s	h	R±0,1	d1 _{6g}	Q	
-	PEP.FZE13X5M08X45	13	5	20	12.4	M8	45	29
-	PEP.FZE13X5M08X70	13	5	20	12.4	M8	70	36
-	PEP.FZE13X5M10X45	13	5	20	12.4	M10	45	37
-	PEP.FZE13X5M10X70	13	5	20	12.4	M10	70	49
-	PEP.FZE13X5M10X100	13	5	20	12.4	M10	100	85
-	PEP.FZE13X5M12X45	13	5	20	12.4	M12	45	46
-	PEP.FZE13X5M12X70	13	5	20	12.4	M12	70	65
-	PEP.FZE13X5M12X100	13	5	20	12.4	M12	100	85