

L755



LARGE WING NUT WITH INSERT AND THREADED THROUGH HOLE

Materials:

Reinforced polyamide.
Resistant to oils and greases.

Surface finish:

Satin.

Colour:

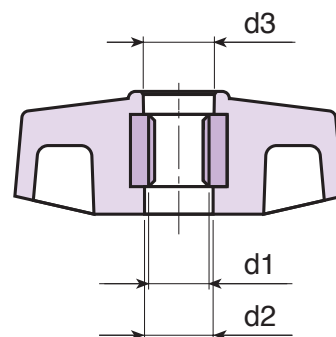
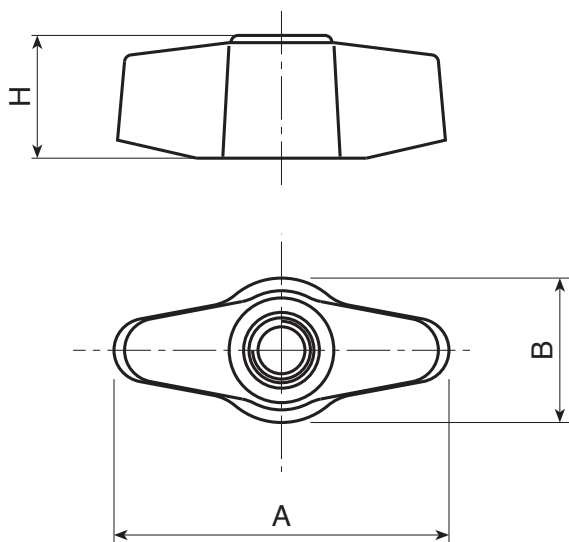
Black (RAL 9011).

Inserts:

Galvanised steel insert with threaded through hole (thread tolerance 6H).

Special Requests:

- Upon request and for special quantities inserts can be supplied in different materials.
- Upon request and for special quantities available in the colours indicated in the chart (attention: reduced range) [page 959].



| Code | Art. | A | B | H | d2 | d3 | d1 _{6H} | g |
|-------------|---------------|----|----|----|-----|----|------------------|----|
| L75548.0001 | L75548.TM0601 | 45 | 20 | 17 | 9.5 | 10 | M6 | 17 |
| L75548.0002 | L75548.TM0801 | 45 | 20 | 17 | 9.5 | 10 | M8 | 16 |