

# K901

## SOLID CONTROL HANDWHEEL WITH INDICATOR SEAT AND LOCKING KNOB



### Materials:

Reinforced and stabilized polyamide.  
Resistant to oils and greases.

### Surface finish:

Satin.

### Colour:

Black (RAL 9011).

### Insert:

Galvanised steel insert with smooth through bore (tolerance H10).

### Mountable indicator:

Use gravity position indicators models K650 or K660. The indicator can be only used in a vertical position (horizontal machine axis). The indicator and the corresponding grub screw d7 must be purchased separately. For further information on the indicators see the pages of articles K650 and K660 [page and page].  
(\*) With adapter KS08050.T01 you can mount the indicator K650050.

### Locking handwheel:

Cylindrical handwheel G793-36 with threaded stud [page]. Black (RAL 9011). ATTENTION: dimension Q2 of the locking handwheel must be chosen by the customer based on the dimensions of the machinery on which the handwheel is applied. For model K901-130 the locking handwheel is replaced by the wing nut L751-32 [page].

### Fixing method:

For fixing systems, or execution of keyways or square holes, please refer to the technical notes attached to the catalogue [page].

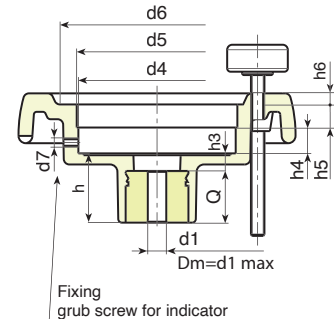
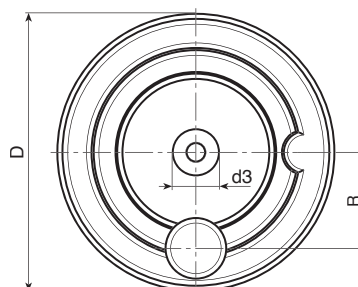
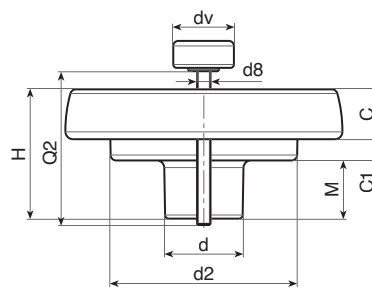
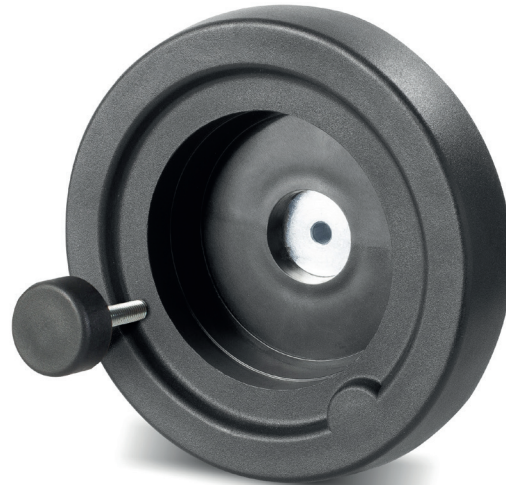
### Special Requests:

- On request and with a minimum of 50 pieces, the inserts can be supplied with the hole d1 with H7 tolerance and black-oxide finish.
- Upon request and for special quantities inserts can be supplied with custom hole diameter d1.
- Upon request and for special quantities inserts can be supplied in different materials/with different coatings.
- The indicator must be ordered separately.**
- Upon request and for special quantities it is possible to change the indicator seat.

### Combinations Diameters/Indicators:

d5=50 --> K650050

d5=80 --> K650080 or K660080



Code	art.	D	H	d	d2	M	C	C1	d3	d4	d5	d6	d7	h	h3	h4	h5	h6	R	d8	Dm	d1	Q	g
K901130.0001	K901130.T080P6.801P	130	65.5	42	98	28.5	23.5	13.5	29	85.2	80*	90	M6	34	10	13.5	12.5	5	54	M8	20	6.8	24	370
K901150.0001	K901150.T080P6.801P	149	69	42	101	31	25.5	12.5	29	85.2	80*	106	M6	37	9	13.5	12.5	6.5	57	M8	20	6.8	28	470
K901175.0001	K901175.T080P6.801P	174	73	41	114	30	31.5	11.5	26	85.2	80*	126	M6	39	11	13.5	12.5	8	60	M8	20	6.8	28	690
K901200.0001	K901200.T080P6.801P	201	71	46	136	24.5	32	14.5	30	85.2	80*	145	M6	35	12	13.5	12.5	10	74	M8	22	6.8	23	850

Attention: For a minimum of 50 pieces the diameter d1 can be customised (hole tolerance H10 galvanised and H7 black-oxide treated).

Dm = Maximum obtainable diameter for subsequent machining (widening).

Q2 = Upon request.

dv = 36 mm. (K901130 dv=32 mm)