

H757

KNURLED SOLID HANDWHEEL WITH FEMALE THREADED INSERT

+135°
-30°

PA6
+G.F.

UL94
HB

RoHS
COMPLIANT

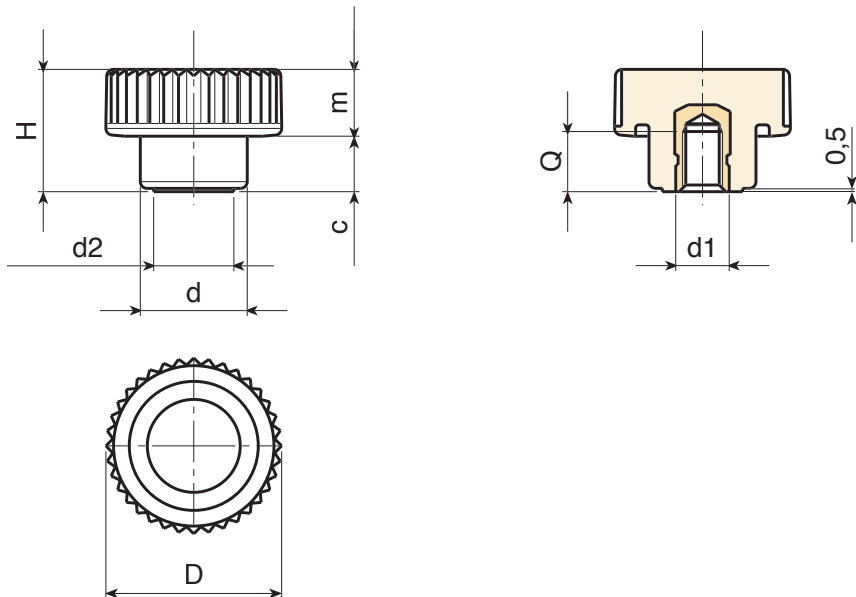
Materials:
Reinforced polyamide.
Resistant to oils and greases.

Surface finish:
Satin.

Colour:
Black (RAL 9011).

Inserts:
Brass insert with female threaded hole (thread tolerance 6H).

- Special Requests:**
- Upon request and for special quantities inserts can be supplied in different materials.
 - Upon request and for special quantities available in the colours indicated in the chart [page].



| Code | art. | D | H | d | m | c | d2 | d1 _{6H} | Q | |
|-------------|---------------|----|----|----|-----|-----|----|------------------|---|----|
| H75726.0007 | H75726.TM0501 | 26 | 18 | 16 | 8.5 | 9.5 | 12 | M5 | 6 | 9 |
| H75726.0008 | H75726.TM0601 | 26 | 18 | 16 | 8.5 | 9.5 | 12 | M6 | 9 | 10 |
| H75726.0009 | H75726.TM0801 | 26 | 18 | 16 | 8.5 | 9.5 | 12 | M8 | 8 | 11 |