

B224ID

NEW



+135°
-30°

PA6
+G.F.

RoHS
COMPLIANT

FIXED HANDLE WITH THROUGH HOLE MADE FROM BLUE FOOD-GRADE MATERIAL

Materials:

Food-grade reinforced polyamide.
Resistant to oils and greases.

Surface finish:

Satin.

Colour:

Blue: (RAL 5005 cod. 95).

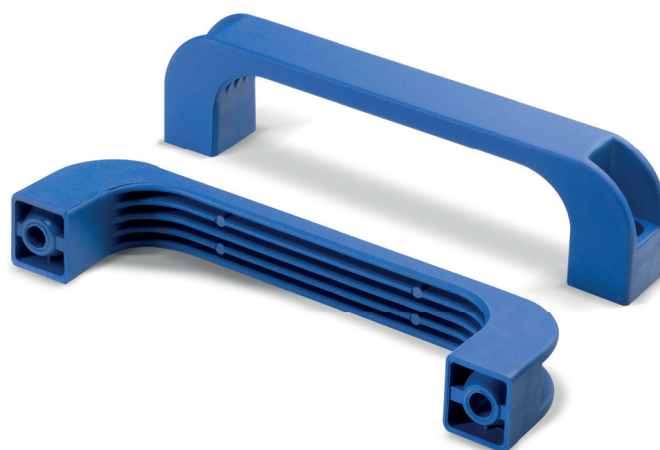
Hole:

Smooth through hole obtained by moulding the plastic.

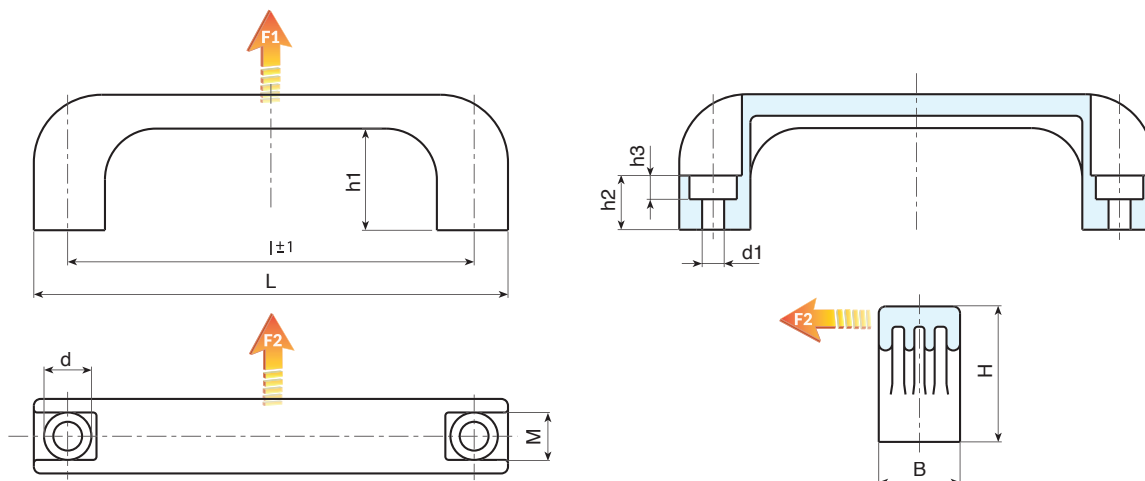
Special requests:

- None.

Notes: Articles produced with materials suitable for contact with foodstuffs; they are used in machinery and equipment for the food industry. The Blue RAL 5005 colour makes it easy to identify an article, or part of an article, that has accidentally ended up in a food processing procedure and can be immediately removed.



02



Code	art.	$l \pm 1$	B	M	H	h1	h2	h3	d	d1	g	F1 (N)	F2 (N)
B224094.0007	B224094.TG6.595ID	94	21	13	37	29	13	7	11	6.5	22	2500	1251
B224117.0023	B224117.TG6.595ID	117	24	13	40	29	15	7	14	6.5	43	4400	3000
B224117.0024	B224117.TG8.595ID	117	24	13	40	29	15	9	14	8.5	39	4400	3000
B224120.0015	B224120.TG6.595ID	120	24	14	40	29	15	7	14	6.5	42	4800	3200
B224120.0016	B224120.TG8.595ID	120	24	14	40	29	15	9	14	8.5	39	4800	3200
B224132.0008	B224132.TG8.595ID	132	26	14	43	31	16	9	14	8.5	63	3400	3200
B224180.0006	B224180.TG8.595ID	180	28	17	51	39	21	9	14	8.5	74	4000	3000
B224235.0006	B224235.TG10.595ID	235	32	20	53	40	21	11	17	10.5	123	3800	3000