

Q264

6-LOBE WASHER

+135°
-30°

PA6
+G.F.

UL94
HB

RoHS
COMPLIANT

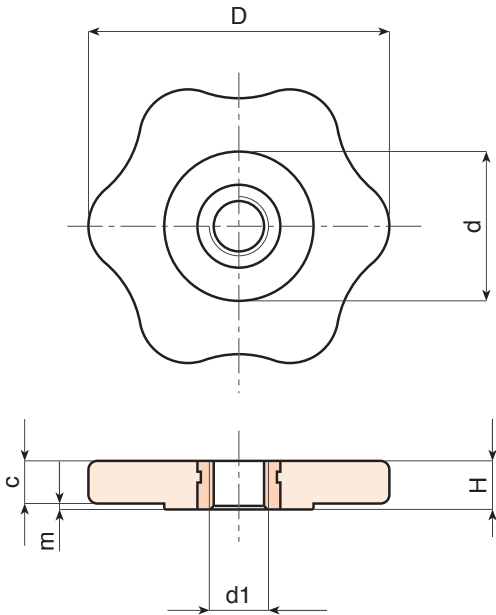
Materials:
Reinforced polyamide.
Resistant to oils and greases.

Surface:
Satin.

Colour:
Black (RAL 9011).

Inserts:
Brass insert with threaded through hole (thread tolerance 6H).

- Special Requests:**
- Upon request and for special quantities inserts can be supplied in different materials.
 - Upon request and for special quantities available in the colours indicated in the chart [page 959].



Code	art.	D	H	d	c	m	d1 _{6H}	
Q26450.0002	Q26450.TM0601P	50	8	25	7	1	M6	18
Q26450.0003	Q26450.TM0801P	50	8	25	7	1	M8	18
Q26450.0005	Q26450.TM1001P	50	8	25	7	1	M10	20