

Y379

NEW**+200°
-20°****39
NiCr****AISI
304****RoHS
COMPLIANT**

DIN ISO 7379 - VÁLLAS CSAVAR

Anyagok:

Y379:

12.9 szilárdsági osztályba tartozó kezeletlen acél.

Y379 CIN:

Kezeletlen rozsdamentes acél (AISI 304).

Felületkikészítés:

Sima.

Szín:

Y379:

Fekete oxiddal kezelt.

Y379 CIN:

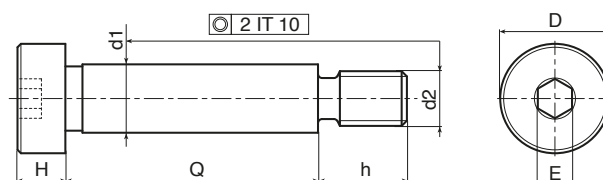
Természetes.

Feldolgozás:

Földelt csap (f9 tolerancia), részben menetes (6 g tolerancia), hatlapos belsejűkulcsnyílással.

Speciális kérések:

- Nincs.



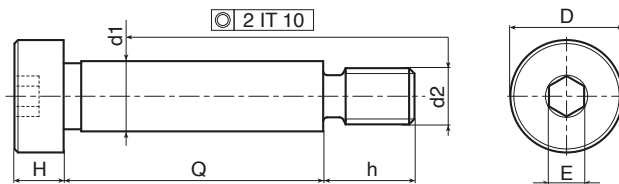
Y379 változat - fekete oxiddal kezelt acél

| Kód | art. | D | d2 6g | H | h | E | d1 f9 | Q | g |
|-----|-----------------|----|-------|-----|-----|-----|-------|----|------|
| - | Y37904.SBM03X06 | 7 | M3 | 3 | 7 | 2 | 4 | 06 | 1,6 |
| - | Y37904.SBM03X08 | 7 | M3 | 3 | 7 | 2 | 4 | 08 | 1,8 |
| - | Y37904.SBM03X10 | 7 | M3 | 3 | 7 | 2 | 4 | 10 | 2 |
| - | Y37904.SBM03X12 | 7 | M3 | 3 | 7 | 2 | 4 | 12 | 2,2 |
| - | Y37904.SBM03X16 | 7 | M3 | 3 | 7 | 2 | 4 | 16 | 2,5 |
| - | Y37904.SBM03X20 | 7 | M3 | 3 | 7 | 2 | 4 | 20 | 3 |
| - | Y37905.SBM04X08 | 9 | M4 | 4 | 8 | 2,5 | 5 | 08 | 3,6 |
| - | Y37905.SBM04X10 | 9 | M4 | 4 | 8 | 2,5 | 5 | 10 | 3,8 |
| - | Y37905.SBM04X16 | 9 | M4 | 4 | 8 | 2,5 | 5 | 16 | 4,8 |
| - | Y37905.SBM04X20 | 9 | M4 | 4 | 8 | 2,5 | 5 | 20 | 5,3 |
| - | Y37905.SBM04X30 | 9 | M4 | 4 | 8 | 2,5 | 5 | 30 | 6,7 |
| - | Y37905.SBM04X40 | 9 | M4 | 4 | 8 | 2,5 | 5 | 40 | 8,8 |
| - | Y37906.SBM05X16 | 10 | M5 | 4,5 | 9,5 | 3 | 6 | 16 | 6,9 |
| - | Y37906.SBM05X20 | 10 | M5 | 4,5 | 9,5 | 3 | 6 | 20 | 7,7 |
| - | Y37906.SBM05X25 | 10 | M5 | 4,5 | 9,5 | 3 | 6 | 25 | 8,9 |
| - | Y37906.SBM05X30 | 10 | M5 | 4,5 | 9,5 | 3 | 6 | 30 | 10 |
| - | Y37906.SBM05X40 | 10 | M5 | 4,5 | 9,5 | 3 | 6 | 40 | 10,4 |
| - | Y37906.SBM05X50 | 10 | M5 | 4,5 | 9,5 | 3 | 6 | 50 | 14 |
| - | Y37906.SBM05X60 | 10 | M5 | 4,5 | 9,5 | 3 | 6 | 60 | 16,5 |
| - | Y37908.SBM06X16 | 13 | M6 | 5,5 | 11 | 4 | 8 | 16 | 12,8 |
| - | Y37908.SBM06X20 | 13 | M6 | 5,5 | 11 | 4 | 8 | 20 | 14,3 |
| - | Y37908.SBM06X25 | 13 | M6 | 5,5 | 11 | 4 | 8 | 25 | 16,3 |
| - | Y37908.SBM06X30 | 13 | M6 | 5,5 | 11 | 4 | 8 | 30 | 18 |
| - | Y37908.SBM06X40 | 13 | M6 | 5,5 | 11 | 4 | 8 | 40 | 22 |

Y379

NEW+200°
-20°**39
NiCr****AISI
304****RoHS
COMPLIANT**

DIN ISO 7379 - VÁLLAS CSAVAR



| Kód | art. | D | d2 6g | H | h | E | d1 f9 | Q | g |
|-----|------------------|----|-------|-----|----|----|-------|-----|-----|
| - | Y37908.SBM06X50 | 13 | M6 | 5,5 | 11 | 4 | 8 | 50 | 26 |
| - | Y37908.SBM06X60 | 13 | M6 | 5,5 | 11 | 4 | 8 | 60 | 30 |
| - | Y37910.SBM08X16 | 16 | M8 | 7 | 13 | 5 | 10 | 16 | 23 |
| - | Y37910.SBM08X20 | 16 | M8 | 7 | 13 | 5 | 10 | 20 | 25 |
| - | Y37910.SBM08X25 | 16 | M8 | 7 | 13 | 5 | 10 | 25 | 28 |
| - | Y37910.SBM08X30 | 16 | M8 | 7 | 13 | 5 | 10 | 30 | 31 |
| - | Y37910.SBM08X40 | 16 | M8 | 7 | 13 | 5 | 10 | 40 | 38 |
| - | Y37910.SBM08X50 | 16 | M8 | 7 | 13 | 5 | 10 | 50 | 44 |
| - | Y37910.SBM08X60 | 16 | M8 | 7 | 13 | 5 | 10 | 60 | 50 |
| - | Y37910.SBM08X70 | 16 | M8 | 7 | 13 | 5 | 10 | 70 | 56 |
| - | Y37910.SBM08X80 | 16 | M8 | 7 | 13 | 5 | 10 | 80 | 62 |
| - | Y37912.SBM10X16 | 18 | M10 | 9 | 16 | 6 | 12 | 16 | 36 |
| - | Y37912.SBM10X20 | 18 | M10 | 9 | 16 | 6 | 12 | 20 | 40 |
| - | Y37912.SBM10X25 | 18 | M10 | 9 | 16 | 6 | 12 | 25 | 45 |
| - | Y37912.SBM10X30 | 18 | M10 | 9 | 16 | 6 | 12 | 30 | 50 |
| - | Y37912.SBM10X40 | 18 | M10 | 9 | 16 | 6 | 12 | 40 | 55 |
| - | Y37912.SBM10X50 | 18 | M10 | 9 | 16 | 6 | 12 | 50 | 65 |
| - | Y37912.SBM10X60 | 18 | M10 | 9 | 16 | 6 | 12 | 60 | 75 |
| - | Y37912.SBM10X70 | 18 | M10 | 9 | 16 | 6 | 12 | 70 | 85 |
| - | Y37912.SBM10X80 | 18 | M10 | 9 | 16 | 6 | 12 | 80 | 93 |
| - | Y37912.SBM10X90 | 18 | M10 | 9 | 16 | 6 | 12 | 90 | 102 |
| - | Y37912.SBM10X100 | 18 | M10 | 9 | 16 | 6 | 12 | 100 | 112 |
| - | Y37916.SBM12X30 | 24 | M12 | 11 | 18 | 8 | 16 | 30 | 92 |
| - | Y37916.SBM12X40 | 24 | M12 | 11 | 18 | 8 | 16 | 40 | 108 |
| - | Y37916.SBM12X50 | 24 | M12 | 11 | 18 | 8 | 16 | 50 | 124 |
| - | Y37916.SBM12X60 | 24 | M12 | 11 | 18 | 8 | 16 | 60 | 140 |
| - | Y37916.SBM12X70 | 24 | M12 | 11 | 18 | 8 | 16 | 70 | 156 |
| - | Y37916.SBM12X80 | 24 | M12 | 11 | 18 | 8 | 16 | 80 | 171 |
| - | Y37916.SBM12X90 | 24 | M12 | 11 | 18 | 8 | 16 | 90 | 186 |
| - | Y37916.SBM12X100 | 24 | M12 | 11 | 18 | 8 | 16 | 100 | 203 |
| - | Y37916.SBM12X120 | 24 | M12 | 11 | 18 | 8 | 16 | 120 | 233 |
| - | Y37920.SBM16X30 | 30 | M16 | 14 | 22 | 10 | 20 | 30 | 167 |
| - | Y37920.SBM16X40 | 30 | M16 | 14 | 22 | 10 | 20 | 40 | 193 |
| - | Y37920.SBM16X50 | 30 | M16 | 14 | 22 | 10 | 20 | 50 | 218 |
| - | Y37920.SBM16X60 | 30 | M16 | 14 | 22 | 10 | 20 | 60 | 242 |
| - | Y37920.SBM16X70 | 30 | M16 | 14 | 22 | 10 | 20 | 70 | 266 |
| - | Y37920.SBM16X80 | 30 | M16 | 14 | 22 | 10 | 20 | 80 | 290 |
| - | Y37920.SBM16X90 | 30 | M16 | 14 | 22 | 10 | 20 | 90 | 315 |
| - | Y37920.SBM16X100 | 30 | M16 | 14 | 22 | 10 | 20 | 100 | 340 |
| - | Y37920.SBM16X120 | 30 | M16 | 14 | 22 | 10 | 20 | 120 | 389 |

Y379 CIN változat - rozsdamentes acél (AISI 304)

INOX

| Kód | art. | D | d2 6g | H | h | E | d1 f9 | Q | g |
|-----|--------------------|----|-------|-----|-----|-----|-------|----|------|
| - | Y37904.INM03X06CIN | 7 | M3 | 3 | 7 | 2 | 4 | 06 | 1,6 |
| - | Y37904.INM03X08CIN | 7 | M3 | 3 | 7 | 2 | 4 | 08 | 1,8 |
| - | Y37904.INM03X10CIN | 7 | M3 | 3 | 7 | 2 | 4 | 10 | 2 |
| - | Y37904.INM03X16CIN | 7 | M3 | 3 | 7 | 2 | 4 | 16 | 2,2 |
| - | Y37904.INM03X20CIN | 7 | M3 | 3 | 7 | 2 | 4 | 20 | 2,5 |
| - | Y37905.INM04X08CIN | 9 | M4 | 4 | 8 | 2,5 | 5 | 08 | 3,6 |
| - | Y37905.INM04X10CIN | 9 | M4 | 4 | 8 | 2,5 | 5 | 10 | 3,8 |
| - | Y37905.INM04X16CIN | 9 | M4 | 4 | 8 | 2,5 | 5 | 16 | 4,8 |
| - | Y37905.INM04X20CIN | 9 | M4 | 4 | 8 | 2,5 | 5 | 20 | 5,3 |
| - | Y37905.INM04X30CIN | 9 | M4 | 4 | 8 | 2,5 | 5 | 30 | 6,7 |
| - | Y37905.INM04X40CIN | 9 | M4 | 4 | 8 | 2,5 | 5 | 40 | 8,8 |
| - | Y37906.INM05X16CIN | 10 | M5 | 4,5 | 9,5 | 3 | 6 | 16 | 6,9 |
| - | Y37906.INM05X20CIN | 10 | M5 | 4,5 | 9,5 | 3 | 6 | 20 | 7,7 |
| - | Y37906.INM05X25CIN | 10 | M5 | 4,5 | 9,5 | 3 | 6 | 25 | 8,9 |
| - | Y37906.INM05X30CIN | 10 | M5 | 4,5 | 9,5 | 3 | 6 | 30 | 10 |
| - | Y37906.INM05X40CIN | 10 | M5 | 4,5 | 9,5 | 3 | 6 | 40 | 10,4 |
| - | Y37906.INM05X50CIN | 10 | M5 | 4,5 | 9,5 | 3 | 6 | 50 | 14 |
| - | Y37906.INM05X60CIN | 10 | M5 | 4,5 | 9,5 | 3 | 6 | 60 | 16,5 |
| - | Y37908.INM06X16CIN | 13 | M6 | 5,5 | 11 | 4 | 8 | 16 | 12,8 |
| - | Y37908.INM06X20CIN | 13 | M6 | 5,5 | 11 | 4 | 8 | 20 | 14,3 |

Y379

NEW

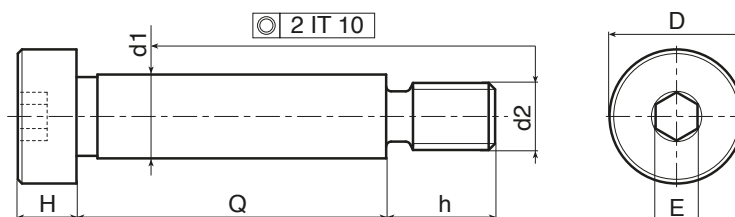
+200°
-20°

**39
NiCr**

**AISI
304**

**RoHS
COMPLIANT**

DIN ISO 7379 - VÁLLAS CSAVAR



| Kód | art. | D | d2 6g | H | h | E | d1 f9 | Q | g |
|-----|---------------------|----|-------|-----|----|----|-------|-----|-----|
| - | Y37908.INM06X60CIN | 13 | M6 | 5,5 | 11 | 4 | 8 | 60 | 30 |
| - | Y37910.INM08X16CIN | 16 | M6 | 7 | 13 | 5 | 10 | 16 | 23 |
| - | Y37910.INM08X20CIN | 16 | M6 | 7 | 13 | 5 | 10 | 20 | 25 |
| - | Y37910.INM08X25CIN | 16 | M6 | 7 | 13 | 5 | 10 | 25 | 28 |
| - | Y37910.INM08X30CIN | 16 | M6 | 7 | 13 | 5 | 10 | 30 | 31 |
| - | Y37910.INM08X40CIN | 16 | M6 | 7 | 13 | 5 | 10 | 40 | 38 |
| - | Y37910.INM08X50CIN | 16 | M6 | 7 | 13 | 5 | 10 | 50 | 44 |
| - | Y37910.INM08X60CIN | 16 | M6 | 7 | 13 | 5 | 10 | 60 | 50 |
| - | Y37910.INM08X70CIN | 16 | M6 | 7 | 13 | 5 | 10 | 70 | 56 |
| - | Y37910.INM08X80CIN | 16 | M6 | 7 | 13 | 5 | 10 | 80 | 62 |
| - | Y37912.INM10X16CIN | 18 | M10 | 9 | 16 | 6 | 12 | 16 | 36 |
| - | Y37912.INM10X20CIN | 18 | M10 | 9 | 16 | 6 | 12 | 20 | 40 |
| - | Y37912.INM10X25CIN | 18 | M10 | 9 | 16 | 6 | 12 | 25 | 45 |
| - | Y37912.INM10X30CIN | 18 | M10 | 9 | 16 | 6 | 12 | 30 | 50 |
| - | Y37912.INM10X40CIN | 18 | M10 | 9 | 16 | 6 | 12 | 40 | 55 |
| - | Y37912.INM10X50CIN | 18 | M10 | 9 | 16 | 6 | 12 | 50 | 65 |
| - | Y37912.INM10X60CIN | 18 | M10 | 9 | 16 | 6 | 12 | 60 | 75 |
| - | Y37912.INM10X70CIN | 18 | M10 | 9 | 16 | 6 | 12 | 70 | 85 |
| - | Y37912.INM10X80CIN | 18 | M10 | 9 | 16 | 6 | 12 | 80 | 93 |
| - | Y37912.INM10X90CIN | 18 | M10 | 9 | 16 | 6 | 12 | 90 | 102 |
| - | Y37912.INM10X100CIN | 18 | M10 | 9 | 16 | 6 | 12 | 100 | 112 |
| - | Y37916.INM12X30CIN | 24 | M12 | 11 | 18 | 8 | 16 | 30 | 92 |
| - | Y37916.INM12X40CIN | 24 | M12 | 11 | 18 | 8 | 16 | 40 | 108 |
| - | Y37916.INM12X50CIN | 24 | M12 | 11 | 18 | 8 | 16 | 50 | 124 |
| - | Y37916.INM12X60CIN | 24 | M12 | 11 | 18 | 8 | 16 | 60 | 140 |
| - | Y37916.INM12X70CIN | 24 | M12 | 11 | 18 | 8 | 16 | 70 | 156 |
| - | Y37916.INM12X80CIN | 24 | M12 | 11 | 18 | 8 | 16 | 80 | 171 |
| - | Y37916.INM12X90CIN | 24 | M12 | 11 | 18 | 8 | 16 | 90 | 186 |
| - | Y37916.INM12X100CIN | 24 | M12 | 11 | 18 | 8 | 16 | 100 | 203 |
| - | Y37916.INM12X120CIN | 24 | M12 | 11 | 18 | 8 | 16 | 120 | 233 |
| - | Y37920.INM16X30CIN | 30 | M16 | 14 | 22 | 10 | 20 | 30 | 167 |
| - | Y37920.INM16X40CIN | 30 | M16 | 14 | 22 | 10 | 20 | 40 | 193 |
| - | Y37920.INM16X50CIN | 30 | M16 | 14 | 22 | 10 | 20 | 50 | 218 |
| - | Y37920.INM16X60CIN | 30 | M16 | 14 | 22 | 10 | 20 | 60 | 242 |
| - | Y37920.INM16X70CIN | 30 | M16 | 14 | 22 | 10 | 20 | 70 | 266 |
| - | Y37920.INM16X80CIN | 30 | M16 | 14 | 22 | 10 | 20 | 80 | 290 |
| - | Y37920.INM16X90CIN | 30 | M16 | 14 | 22 | 10 | 20 | 90 | 315 |
| - | Y37920.INM16X100CIN | 30 | M16 | 14 | 22 | 10 | 20 | 100 | 340 |
| - | Y37920.INM16X120CIN | 30 | M16 | 14 | 22 | 10 | 20 | 120 | 389 |