

W466



C40

AISI 303



KNURLED METAL HANDWHEEL WITH THREADED HOLE

Materials:

W466:

Steel with strength class 5.8.

W466 PIN:

Stainless steel (Aisi 303).

Surface finish:

Turned with low roughness.

Colour:

W466:

Nickel plated (galvanic treatment).

W466PIN:

Natural.

Alternative finishes:

Black-oxide treatment:

(replace the final letter of the code (H) with letter B (W46629.SM08B).

Galvanising:

(replace the final letter of the code (H) with letter Z (W46629.SM08Z).

Hole:

Threaded through hole machined from solid metal (thread tolerance 6H).

Special requests:

- Upon request and for special quantities inserts can be supplied to customer's drawing with hole diameter d1.



H



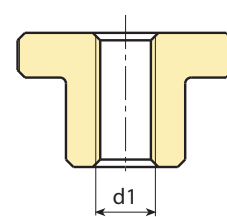
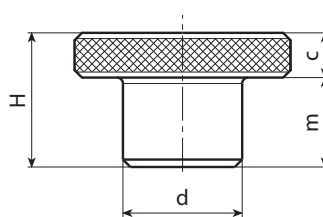
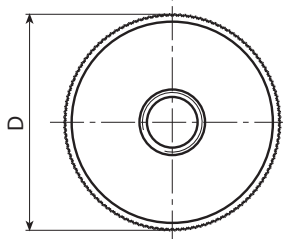
ST. STEEL



Galvanised ver.



Black-oxide treated ver.



Version W466 - nickel-plated steel

Code	Art.	d	D	H	m	c	d1 _{6H}	g
H18015.BM0501	H18015.BM0501	6	11	8	5	3	M3	3
H18015.BM0501	H18015.BM0501	8	15	10	6	4	M4	7
H18015.BM0501	H18015.BM0501	10	19	12	8	4	M5	12
H18015.BM0501	H18015.BM0501	12	23	15	10	5	M6	22.5
H18015.BM0501	H18015.BM0501	16	29	18	12	6	M8	45
H18015.BM0501	H18015.BM0501	20	35	23	15	8	M10	87
H18015.BM0501	H18015.BM0501	22	39	25	15	10	M12	121

Version W466 PIN - stainless steel (Aisi 303)

INOX