

# W271



## T-HANDLES WITH STEEL INDEXING PLUNGER AND LOCK NUT

### Materials:

- (3) Stainless steel spring (Aisi 301).
- (4) Reinforced polyamide T-handle. Cannot be disassembled. Resistant to oils and greases.

### W271:

- (2) Threaded high-resistance steel hexagon ring nut.
- (1) Hardened high resistance steel plunger pin.
- (5) Threaded steel lock nut (UNI 5589).

### W271CIN:

- (2) Threaded stainless steel hexagon ring nut (Aisi 303).
- (1) Stainless steel plunger pin (Aisi 303).
- (5) Threaded stainless steel lock nut (Aisi 304) (UNI 5589).

### Surface finish:

- (4) Satin.
- (1-2-3-5) Smooth.

### Colour:

- (4) Black (RAL 9011).

W271: (1-2-5) Black-oxide treated.

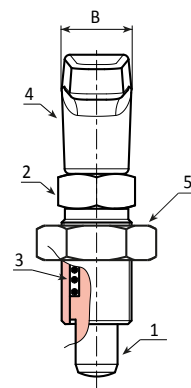
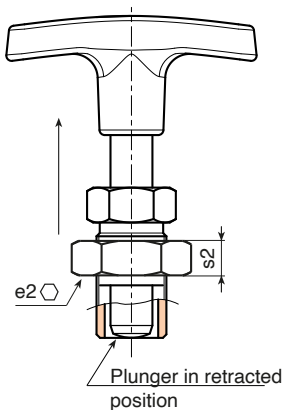
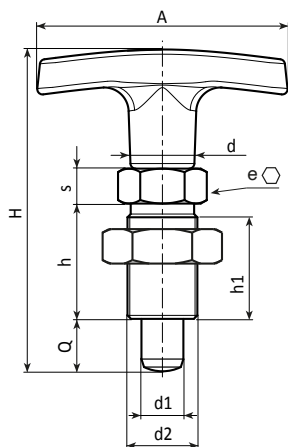
W271CIN: (1-2-5) Natural.

### ATTENTION:

- > We recommend an H7 tolerance for the plunger stem bore.
- > The nut is supplied assembled.

### Special Requests:

- On request and for special quantities the T-handle can be supplied in the colours indicated in the table [page].
- On request the nut can be supplied disassembled.



### Version W271 - black-oxide treated steel

Code	Art.	A	B	H	h	h1	d2	d	e	s	e2	s2	d1 -0,02 -0,04	Q	g
-	W271.Q0501	50	15	51	17	15	M10x1	14	12	5	17	5	5	5	34
-	W271.Q0601	50	15	56	20	18	M12x1,5	14	14	6	19	6	6	6	45
-	W271.Q0801	60	18	75	26	24	M16x1,5	16,5	19	8	24	8	8	8	90
-	W271.Q1001	72	20	87	33	31	M20x1,5	18,5	22	10	30	9	10	10	161

### Version W271 CIN - stainless steel (Aisi 303)

Code	Art.	A	B	H	h	h1	d2	d	e	s	e2	s2	d1 -0,02 -0,04	Q	g
-	W271.I0501CIN	50	15	51	17	15	M10x1	14	12	5	17	5	5	5	34
-	W271.I0601CIN	50	15	56	20	18	M12x1,5	14	14	6	19	6	6	6	45
-	W271.I0801CIN	60	18	75	26	24	M16x1,5	16,5	19	8	24	8	8	8	90
-	W271.I1001CIN	72	20	87	33	31	M20x1,5	18,5	22	10	30	9	10	10	161

INOX