

# T480

## KERÉK CSŐ DUGASZ



### Anyagok:

Kerek dugasz kerek lemezes betéttel polietilénből (LDPE).

### Felületkikészítés:

Szatén.

### Szín:

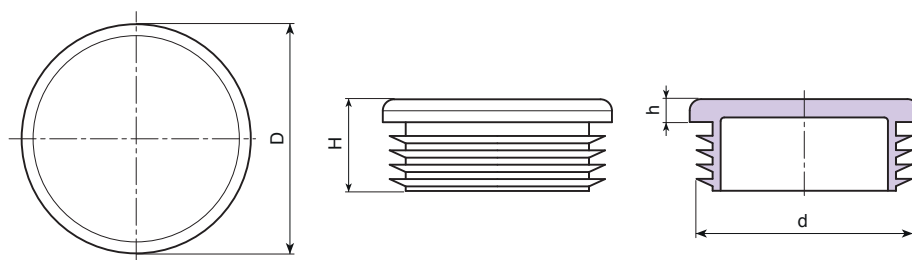
Fekete (RAL 9011).

### Rögzítési módszer:

Gyorscsatlakozás.

### Speciális kérések:

- Nincs.



| Kód | art.        | D   | H  | h   | d a cső vastagsága (min. - max.) | g    |
|-----|-------------|-----|----|-----|----------------------------------|------|
| -   | T480010.D01 | 10  | 15 | 3.5 | 1-2                              | 0.5  |
| -   | T480012.D01 | 12  | 15 | 3.5 | 1-2                              | 0.5  |
| -   | T480013.D01 | 13  | 15 | 4.5 | 1-2                              | 0.5  |
| -   | T480014.D01 | 14  | 17 | 5   | 1-2                              | 1    |
| -   | T480015.D01 | 15  | 16 | 5   | 1-2                              | 1    |
| -   | T480016.D01 | 16  | 17 | 5   | 1-2                              | 1.5  |
| -   | T480018.D01 | 18  | 17 | 5   | 1-2,5                            | 1.5  |
| -   | T480019.D01 | 19  | 17 | 5   | 1-2,5                            | 1.8  |
| -   | T480020.D01 | 20  | 17 | 5   | 1-2,5                            | 2    |
| -   | T480022.D01 | 22  | 17 | 5   | 1-3                              | 2    |
| -   | T480023.D01 | 23  | 17 | 5   | 1-2,5                            | 2.5  |
| -   | T480024.D01 | 24  | 17 | 5   | 1-2,5                            | 2.5  |
| -   | T480025.D01 | 25  | 17 | 5   | 1-3                              | 2.5  |
| -   | T480026.D01 | 26  | 17 | 5   | 1-3                              | 3    |
| -   | T480027.D01 | 27  | 17 | 5   | 1-3                              | 3    |
| -   | T480028.D01 | 28  | 17 | 5   | 1-2,5                            | 3    |
| -   | T480030.D01 | 30  | 17 | 5   | 1-2,5                            | 4    |
| -   | T480032.D01 | 32  | 17 | 5   | 1-2,5                            | 3.5  |
| -   | T480034.D01 | 34  | 17 | 5   | 1-3                              | 5    |
| -   | T480035.D01 | 35  | 17 | 5   | 1-3                              | 4.5  |
| -   | T480036.D01 | 36  | 17 | 5   | 1-3                              | 4.5  |
| -   | T480037.D01 | 37  | 17 | 5   | 1-3                              | 5    |
| -   | T480038.D01 | 38  | 17 | 5   | 1-3,5                            | 5.5  |
| -   | T480040.D01 | 40  | 17 | 5   | 1-3                              | 5.5  |
| -   | T480042.D01 | 42  | 17 | 5   | 1-2,5                            | 7    |
| -   | T480043.D01 | 43  | 17 | 5   | 2-2,5                            | 7    |
| -   | T480045.D01 | 45  | 17 | 5   | 1-3,5                            | 7    |
| -   | T480046.D01 | 46  | 17 | 5   | 1-3,5                            | 7.5  |
| -   | T480048.D01 | 48  | 17 | 5   | 1-3,5                            | 7.8  |
| -   | T480050.D01 | 50  | 17 | 5   | 1-2,5                            | 8    |
| -   | T480052.D01 | 52  | 19 | 5   | 1,5-3,5                          | 9.5  |
| -   | T480055.D01 | 55  | 17 | 5   | 1-3                              | 9.5  |
| -   | T480060.D01 | 60  | 24 | 5   | 1,5-3                            | 16.5 |
| -   | T480065.D01 | 65  | 25 | 5   | 1,5-3,5                          | 18.5 |
| -   | T480070.D01 | 70  | 25 | 5   | 1,5-4,5                          | 25   |
| -   | T480075.D01 | 75  | 27 | 6   | 1-3,5                            | 24   |
| -   | T480080.D01 | 80  | 25 | 4   | 1,5-3                            | 32.5 |
| -   | T480085.D01 | 85  | 27 | 6   | 1,5-4                            | 28   |
| -   | T480090.D01 | 90  | 26 | 6   | 2,5-5                            | 34   |
| -   | T480095.D01 | 95  | 27 | 6   | 1-4                              | 34.5 |
| -   | T480100.D01 | 100 | 35 | 6   | 2-4,5                            | 43   |