

# T480

## ROUND TUBE PLUG



### Materials:

Round plug with round lamellar insert in Polyethylene (LDPE).

### Surface finish:

Satin.

### Colour:

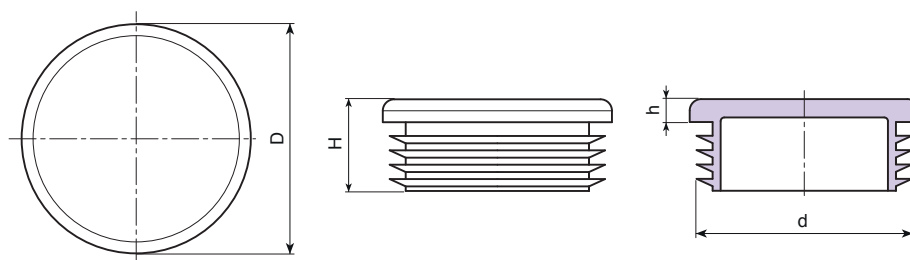
Black (RAL 9011).

### Fixing method:

Push-fit.

### Special requests:

- None.



Code	art.	D	H	h	d thickness of the tube (min - max)	g
-	T480010.D01	10	15	3.5	1-2	0.5
-	T480012.D01	12	15	3.5	1-2	0.5
-	T480013.D01	13	15	4.5	1-2	0.5
-	T480014.D01	14	17	5	1-2	1
-	T480015.D01	15	16	5	1-2	1
-	T480016.D01	16	17	5	1-2	1.5
-	T480018.D01	18	17	5	1-2,5	1.5
-	T480019.D01	19	17	5	1-2,5	1.8
-	T480020.D01	20	17	5	1-2,5	2
-	T480022.D01	22	17	5	1-3	2
-	T480023.D01	23	17	5	1-2,5	2.5
-	T480024.D01	24	17	5	1-2,5	2.5
-	T480025.D01	25	17	5	1-3	2.5
-	T480026.D01	26	17	5	1-3	3
-	T480027.D01	27	17	5	1-3	3
-	T480028.D01	28	17	5	1-2,5	3
-	T480030.D01	30	17	5	1-2,5	4
-	T480032.D01	32	17	5	1-2,5	3.5
-	T480034.D01	34	17	5	1-3	5
-	T480035.D01	35	17	5	1-3	4.5
-	T480036.D01	36	17	5	1-3	4.5
-	T480037.D01	37	17	5	1-3	5
-	T480038.D01	38	17	5	1-3,5	5.5
-	T480040.D01	40	17	5	1-3	5.5
-	T480042.D01	42	17	5	1-2,5	7
-	T480043.D01	43	17	5	2-2,5	7
-	T480045.D01	45	17	5	1-3,5	7
-	T480046.D01	46	17	5	1-3,5	7.5
-	T480048.D01	48	17	5	1-3,5	7.8
-	T480050.D01	50	17	5	1-2,5	8
-	T480052.D01	52	19	5	1,5-3,5	9.5
-	T480055.D01	55	17	5	1-3	9.5
-	T480060.D01	60	24	5	1,5-3	16.5
-	T480065.D01	65	25	5	1,5-3,5	18.5
-	T480070.D01	70	25	5	1,5-4,5	25
-	T480075.D01	75	27	6	1-3,5	24
-	T480080.D01	80	25	4	1,5-3	32.5
-	T480085.D01	85	27	6	1,5-4	28
-	T480090.D01	90	26	6	2,5-5	34
-	T480095.D01	95	27	6	1-4	34.5
-	T480100.D01	100	35	6	2-4,5	43