

S600

FIXADOR DE CABO COM PORCA HEXAGONAL



Materiais:

Poliamida reforçada.

Resistente a óleos e massas lubrificantes.

Superfície:

Acetinada.

Cor:

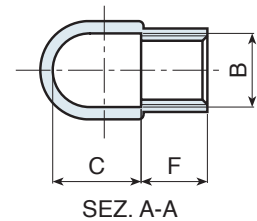
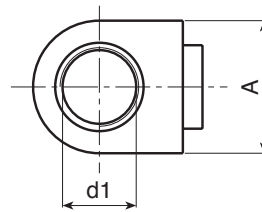
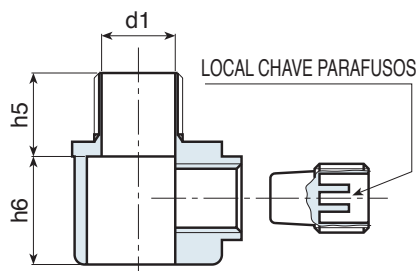
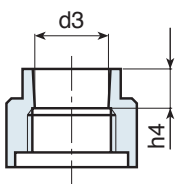
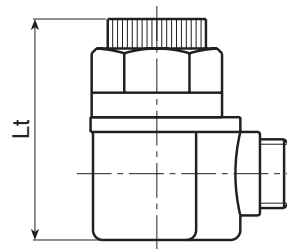
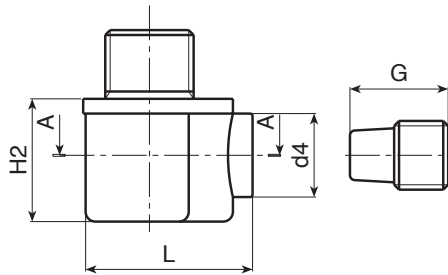
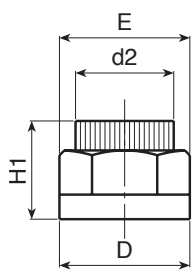
Preto (RAL 9011).

Furo:

Furo liso passante obtido por moldagem no plástico.

Pedidos especiais:

- Nenhum.



| Código | art. | B | C | D | E | F | G | L | H1 | H2 | h4 | h5 | h6 | d1 | d2 | d3 | d4 | Lt | |
|--------|---------------|-----|------|----|----|------|----|------|----|----|----|------|----|------|----|----|----|----|----|
| - | S60038.TG1001 | M14 | 17.5 | 26 | 23 | 14.5 | 19 | 34.5 | 20 | 22 | 7 | 16.5 | 19 | 10.5 | 19 | 14 | 17 | 43 | 13 |
| - | S60038.TG1101 | M14 | 17.5 | 26 | 23 | 14.5 | 19 | 34.5 | 20 | 22 | 7 | 16.5 | 19 | 11.5 | 19 | 14 | 17 | 43 | 13 |
| - | S60038.TG1401 | M14 | 17.5 | 26 | 23 | 14.5 | 19 | 34.5 | 20 | 22 | 7 | 16.5 | 19 | 14.5 | 19 | 14 | 17 | 43 | 13 |