

# S230

## ISOLERSCHEIBEN



**Material:**  
Phenolharz.  
Öl- und fettbeständig.  
Gegen hohe Temperaturen beständig.

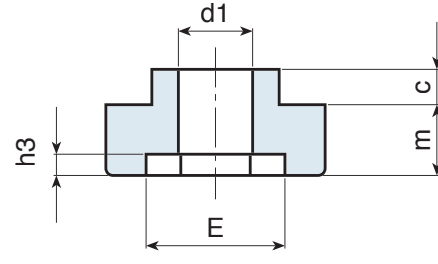
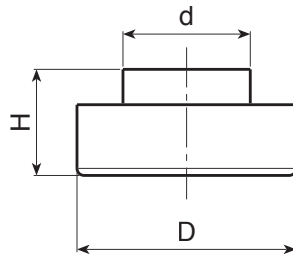
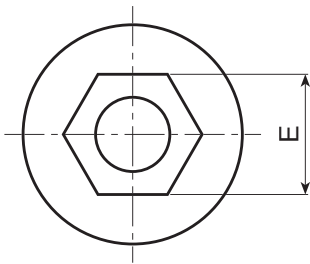
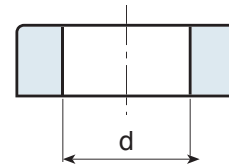
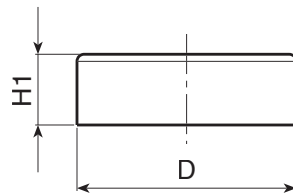
**Oberfläche:**  
Hochglanz.

**Farbe:**  
Schwarz (RAL 9011).

**Loch:**  
Durchgangsbohrung, die durch Formung im Kunststoff hergestellt wird.

**Weitere Möglichkeiten:**

- Keine.



19

| Code         | Art.         | D  | d  | H  | H1   | c   | m    | E  | h3 | d1   |    |
|--------------|--------------|----|----|----|------|-----|------|----|----|------|----|
| S23020C.0001 | S23020C.BG06 | 20 | 11 | 12 | 5    | 4   | 8    | 10 | 3  | 6,5  | 8  |
| S23031C.0001 | S23031C.BG08 | 31 | 18 | 15 | 10,5 | 4,5 | 10,5 | 13 | 3  | 9    | 22 |
| S23031C.0003 | S23031C.BG10 | 31 | 18 | 15 | 10   | 5   | 10   | 17 | 3  | 10,5 | 18 |
| S23031C.0003 | S23031C.BG12 | 31 | 18 | 15 | 10,5 | 4,5 | 10,5 | 19 | 3  | 13,5 | 15 |
| S23038C.0001 | S23038C.BG14 | 35 | 22 | 18 | 10   | 5   | 12   | 22 | 5  | 14,5 | 24 |

