

# S113

## FEMALE CABLE CONNECTOR



### Materials:

(4) Polypropylene and SBS rubber alloy, 75 Shore.  
Resistant to oils and greases.

### Surface finish:

Smooth.

### Colour:

Black (RAL 9011).

### Inserts:

(1) Brass insert with female connector EN 60794:12.  
(2) Soft copper cable collector tube.  
(3) Hexagon socket grub screw DIN 913-45H (for version F95-00 no. 2 grub screws).

### Special Requests:

- None.



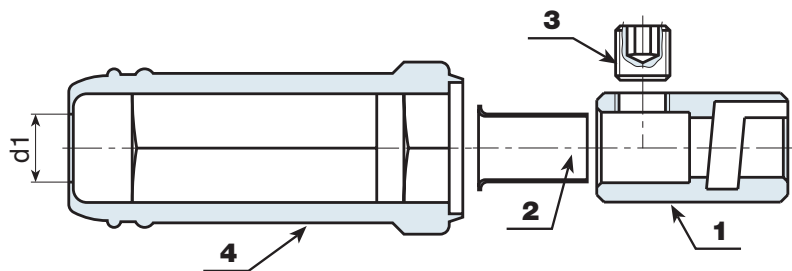
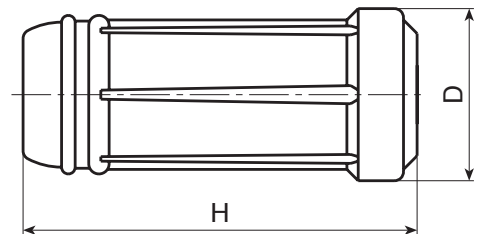
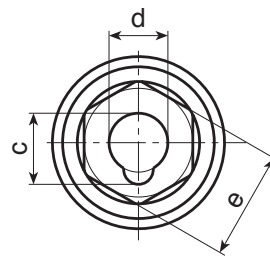
S113+S112



S113+S114



S113+S118



Code	art.	D	H	d	c	e	d1	⚖	Amp. Max
-	S113.F2500	24.5	59	9	10.5	14	8.5	38	200
-	S113.F3550	35	87	13	16	21	11	104	250
-	S113.F7000	38	87	13	16.5	24	15.5	151	400
-	S113.F9500	38	87	13	16	24	15.5	188	500