

R107CIN

INOX

max
4 Km/h

+80°
-25°

PA6

UL94
HB

RoHS
COMPLIANT

POLYAMIDE MONOLITHIC WHEEL WITH RECTANGULAR STAINLESS STEEL SWIVEL PLATE

Materials:

Wheel body (1):

Polyamide. Resistant to oils and greases.

Tread (2):

Polyamide. Resistant to oils and greases.

Surface finish:

Smooth.

Colour:

(1-2) Natural white.

(3-4-5-6) Galvanised blue.

Wheel rotation (4):

The hole for the pivot pin is formed by plastic moulding. A galvanised steel tube is positioned between the stud and the hole for protection.

Bracket (3):

Stainless steel (Aisi 304) fork.

Rotating assembly (5):

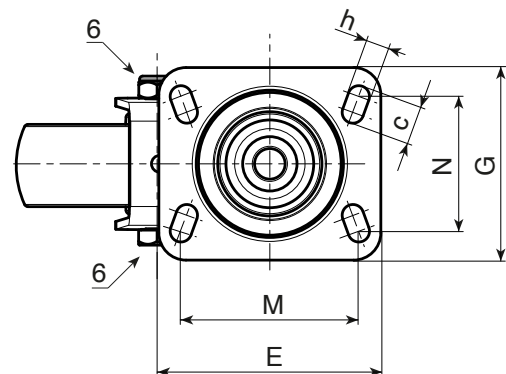
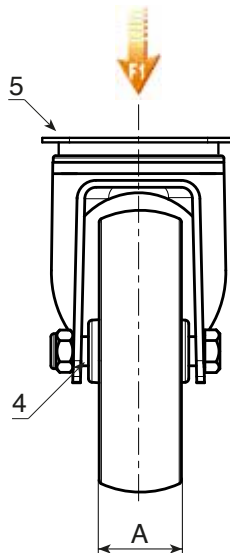
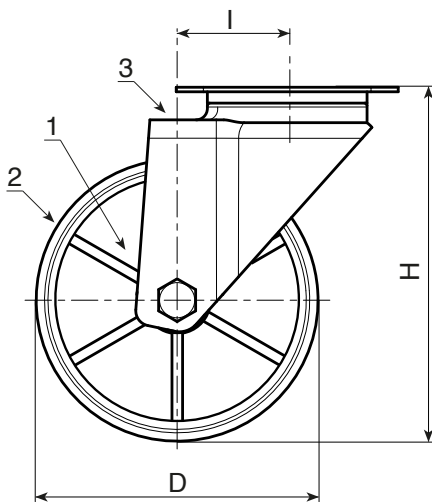
Stainless steel rotating assembly (Aisi 304) with double stainless steel (Aisi 420) ball race, and rectangular swivel plate with four slotted mounting holes.

Wheel fastening (6):

Stainless steel (Aisi 304) hex head bolt, coupled with a stainless steel (Aisi 304) nut.

Special requests:

- Upon request and for a minimum of 20 pieces, the wheel can be supplied with a needle roller cage, (replace code no. R107CIN with code no. R137CIN).



INOX

| Code | art. | D | A | H | I | E | G | M | N | c | h | g | F1 (Kg) |
|------|------------------------|-----|----|-----|----|-----|-----|-----|----|----|----|------|---------|
| - | R107080.T30P080X060CIN | 80 | 30 | 108 | 32 | 95 | 80 | 80 | 60 | 12 | 9 | 410 | 100 |
| - | R107100.T30P080X060CIN | 100 | 30 | 127 | 32 | 95 | 80 | 80 | 60 | 12 | 9 | 450 | 130 |
| - | R107125.T39P080X060CIN | 125 | 39 | 155 | 32 | 95 | 80 | 80 | 60 | 12 | 9 | 888 | 130 |
| - | R107150.T40P080X060CIN | 150 | 40 | 184 | 35 | 95 | 100 | 80 | 60 | 12 | 9 | - | 140 |
| - | R107175.T45P105X080CIN | 175 | 45 | 228 | 48 | 129 | 106 | 105 | 80 | 23 | 11 | 1854 | 300 |
| - | R107200.T50P105X080CIN | 200 | 50 | 240 | 48 | 129 | 106 | 105 | 80 | 23 | 11 | 2046 | 300 |