

# O402



## FLAT HINGE WITH LOWERED PIVOT PIN AND THROUGH HOLES

### Materials:

Reinforced polyamide.  
Resistant to oils and greases.

### Surface finish:

Satin.

### Colour:

Black (RAL 9011).

### Inserts:

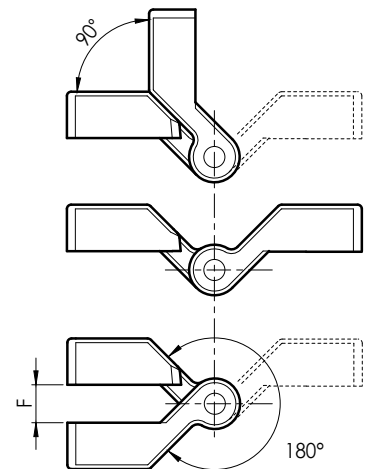
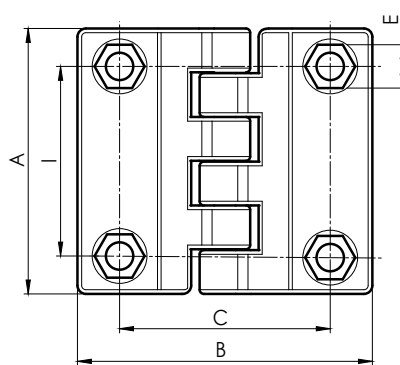
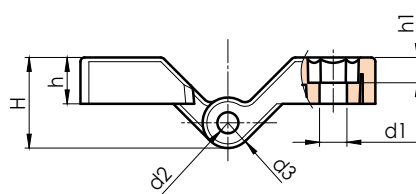
Galvanised steel pin.

### Hole:

Through hole obtained by moulding the plastic. Hole for hex head screw UNI 5727.

### Special Requests:

- Upon request and for special quantities available in the colours indicated in the chart [page].



Code	art.	I	C	A	B	E	F	h	h1	H	d2	d3	d1	
-	O402045.TG06.501	45	50	63	70	10	9	11	6	21.5	5	12	6.5	45