

L806



“EUROMODEL” WING NUT WITH THREADED THROUGH-HOLE INSERT WITHOUT CAP

MODELLO DEPOSITATO

Materials:

Reinforced polyamide.
Resistant to oils and greases.

Surface finish:

Satin.

Colour:

Black (RAL 9011).

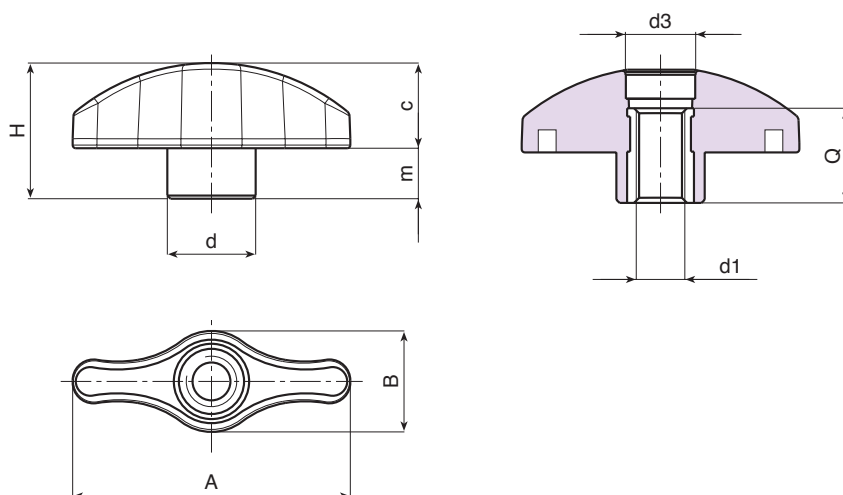
Inserts:

L806: Brass insert with threaded through hole (thread tolerance 6H).

L806PIN: Stainless steel insert with threaded through hole (Aisi 303) (thread tolerance 6H).

Special requests:

- Upon request and for special quantities inserts can be supplied in different materials.
- Upon request and for special quantities available in the colours indicated in the chart (attention: reduced range) [page].



Version L806: standard brass insert.

| Code | art. | A | B | H | m | c | d | d3 | d1 ^{6H} | Q | g |
|------|---------------|----|----|------|-----|------|----|----|------------------|----|----|
| - | L80644.TM0501 | 44 | 16 | 21.5 | 8 | 14 | 14 | 10 | M5 | 15 | 9 |
| - | L80644.TM0601 | 44 | 16 | 21.5 | 8 | 14 | 14 | 10 | M6 | 15 | 9 |
| - | L80644.TM0801 | 44 | 16 | 21.5 | 8 | 14 | 14 | 10 | M8 | 15 | 10 |
| - | L80652.TM0501 | 52 | 19 | 25.5 | 9.5 | 16.5 | 17 | 13 | M5 | 18 | 14 |
| - | L80652.TM0601 | 52 | 19 | 25.5 | 9.5 | 16.5 | 17 | 13 | M6 | 18 | 15 |
| - | L80652.TM0801 | 52 | 19 | 25.5 | 9.5 | 16.5 | 17 | 13 | M8 | 18 | 16 |
| - | L80652.TM1001 | 52 | 19 | 25.5 | 9.5 | 16.5 | 17 | 13 | M10 | 18 | 16 |
| - | L80667.TM0601 | 67 | 24 | 32 | 11 | 21.5 | 21 | 16 | M6 | 18 | 25 |
| - | L80667.TM0801 | 67 | 24 | 32 | 11 | 21.5 | 21 | 16 | M8 | 18 | 25 |
| - | L80667.TM1001 | 67 | 24 | 32 | 11 | 21.5 | 21 | 16 | M10 | 18 | 26 |
| - | L80667.TM1201 | 67 | 24 | 32 | 11 | 21.5 | 21 | 16 | M12 | 18 | 26 |

Version L806PIN: stainless steel insert (Aisi 303).

| Code | art. | A | B | H | m | c | d | d3 | d1 ^{6H} | Q | g |
|------|------------------|----|----|------|-----|------|----|----|------------------|----|----|
| - | L80644.TM0601PIN | 44 | 16 | 21.5 | 8 | 14 | 14 | 10 | M6 | 15 | 9 |
| - | L80652.TM0801PIN | 52 | 19 | 25.5 | 9.5 | 16.5 | 17 | 13 | M8 | 18 | 16 |
| - | L80667.TM1001PIN | 67 | 24 | 32 | 11 | 21.5 | 21 | 16 | M10 | 18 | 26 |

INOX