

# L751



## WING NUT WITH THREADED STUD

### Materials:

Reinforced polyamide.  
Resistant to oils and greases.

### Surface finish:

Satin.

### Colour:

Black (RAL 9011).

### Inserts:

#### L751:

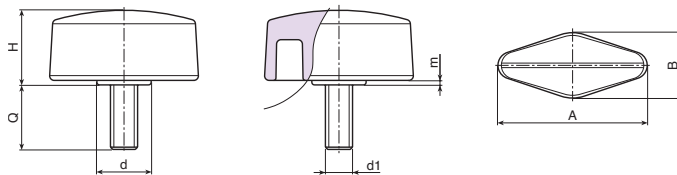
Galvanised steel threaded stud (thread tolerance 6g).

#### L751CIN:

Stainless steel threaded stud (Aisi 303) (thread tolerance 6g).

### Special Requests:

- Upon request and for special quantities inserts can be supplied with customised lengths.
- Upon request and for special quantities inserts can be supplied in different materials.
- Upon request and for special quantities available in the colours indicated in the chart (attention: reduced range) [page ].



### Version L751: with threaded stud in galvanised steel.

Code	Art.	A	B	H	m	d	LM	d1 <sub>6g</sub>	Q	
-	L75132.TM05X1601	33	15	16.5	1	12	60	M5	16	8
-	L75132.TM05X2501	33	15	16.5	1	12	60	M5	25	9
-	L75132.TM05X3001	33	15	16.5	1	12	60	M5	30	11
-	L75132.TM05X4001	33	15	16.5	1	12	60	M5	40	15
-	L75132.TM06X1001	33	15	16.5	1	12	60	M6	10	9
-	L75132.TM06X1601	33	15	16.5	1	12	60	M6	16	11
-	L75132.TM06X2001	33	15	16.5	1	12	60	M6	20	12
-	L75132.TM06X2501	33	15	16.5	1	12	60	M6	25	12
-	L75132.TM06X3001	33	15	16.5	1	12	60	M6	30	12,5
-	L75132.TM06X4001	33	15	16.5	1	12	60	M6	40	15,5
-	L75132.TM08X1001	33	15	16.5	1	12	60	M8	10	13,5
-	L75132.TM08X1601	33	15	16.5	1	12	60	M8	16	14,5
-	L75132.TM08X2001	33	15	16.5	1	12	60	M8	20	16
-	L75132.TM08X2501	33	15	16.5	1	12	60	M8	25	17,5
-	L75132.TM08X3001	33	15	16.5	1	12	60	M8	30	19
-	L75132.TM08X4001	33	15	16.5	1	12	60	M8	40	22
-	L75148.TM06X1001	48	15	16	1	12,5	70	M6	10	13
-	L75148.TM06X1601	48	15	16	1	12,5	70	M6	16	15
-	L75148.TM06X2001	48	15	16	1	12,5	70	M6	20	16
-	L75148.TM08X1601	48	15	16	1	12,5	70	M8	16	18
-	L75148.TM08X2001	48	15	16	1	12,5	70	M8	20	20
-	L75148.TM08X2501	48	15	16	1	12,5	70	M8	25	21,5
-	L75148.TM08X3001	48	15	16	1	12,5	70	M8	30	23
-	L75148.TM08X4001	48	15	16	1	12,5	70	M8	40	27

Customised stud length available for a minimum of 150 pieces.  
LM = Maximum mouldable length.

### Version L751 CIN - stainless steel insert (Aisi 303).

Code	Art.	A	B	H	m	d	LM	d1 <sub>6g</sub>	Q	
-	L75132.TM06X1101CIN	33	15	16.5	1	12	60	M6	11	11
-	L75132.TM06X1601CIN	33	15	16.5	1	12	60	M6	16	13
-	L75132.TM06X3001CIN	33	15	16.5	1	12	60	M6	30	17
-	L75132.TM08X1601CIN	33	15	16.5	1	12	60	M8	16	15

Threaded stud length on request, with a minimum quantity of 250 pieces.