

L270CIN

T-HANDLE WITH STAINLESS STEEL THREADED INSERT

+135°
-30°

PA6
+G.F.

UL94
HB

RoHS
COMPLIANT

INOX

Materials:

Reinforced polyamide.
Resistant to oils and greases.

Surface finish:

Satin.

Colour:

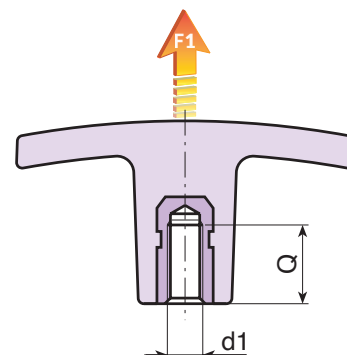
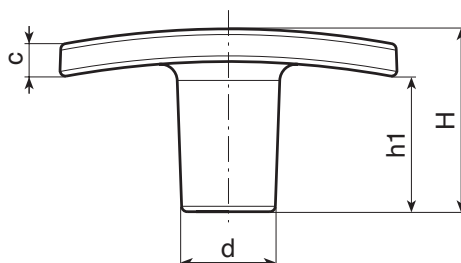
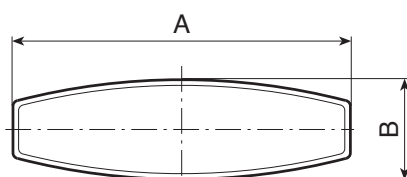
Black (RAL 9011).

Inserts:


Stainless steel insert with female threaded hole (Aisi 303)
(thread tolerance 6H).

Special Requests:

- Upon request and for special quantities available in the colours indicated in the chart [page].



INOX

Code	Art.	A	B	H	h1	c	d	d1 ^{6H}	Q		F1 (N)
-	L27050.TM0501CIN	50	15	24	17	5	14	M5	9	14	4100
-	L27050.TM0601CIN	50	15	24	17	5	14	M6	9	14	4100
-	L27050.TM0801CIN	50	15	24	17	5	14	M8	12	16	4100
-	L27060.TM0601CIN	60	18	33	24	6	16.5	M6	9	20	5800
-	L27060.TM0801CIN	60	18	33	24	6	16.5	M8	12	21	5800
-	L27060.TM1001CIN	60	18	33	24	6	16.5	M10	18	24	5800
-	L27072.TM0801CIN	72	19	34	20	10	18	M8	19	32	6500
-	L27072.TM1001CIN	72	19	34	20	10	18	M10	18	33	6500
-	L27072.TM1201CIN	72	19	34	20	10	18	M12	15	34	6500