

J184



STEEL CATCH PLATE FOR ADJUSTABLE TOGGLE LATCH

Materials:

Drilled and sheared catch plate made of steel.

Surface finish:

Glossy.

Colour:

Standard blue galvanising.

ATTENTION:

The toggle latch must be ordered separately from the catch plate.

Special Requests:

- None.

COMBINABLE CATCH PLATES:

Catch plate J184048 combinable with toggle latches:

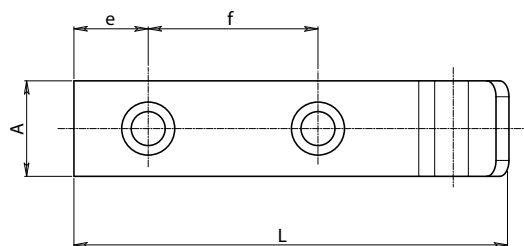
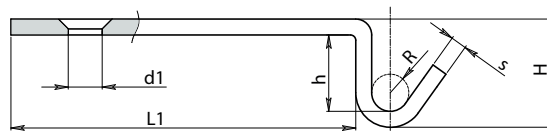
J180048-J182048.

Catch plate J184065 combinable with toggle latches: J180065-

J182065-J180112-J182112.



J



Code	Art.	H	L	L1	h	A	e	f	R	d1	s	
-	J184048.FZ09	9	40	29	5	16	7	14	2.5	5.1	2	7
-	J184065.FZ21	21	82	65	16	18	14	32	3.5	6.5	3	31